



TIPS & CONSIDERATIONS



EMBEDDED QUIZZES IN VIDEO LECTURES (FIGURES 2 AND 3)

- Should be aligned to the lecture’s intended learning outcomes.
- If there are multiple questions (highly advisable), intersperse questions at various points where appropriate throughout the video (using timestamps). This helps to sustain student engagement with the lecture.
- Use software that allow adding of quizzes in videos, such as [Panopto](#) and [Camtasia](#).
- Panopto has several useful [quiz-related features](#), e.g. preventing viewers from advancing in the lecture if they have not attempted the quiz questions, option of retaking quizzes. Feedback can be provided promptly as follows:
 - In the quiz feature itself, under “Correct answer explanation (optional)” (Figure 2), or
 - As part of the video lecture right after the quiz timing.
- Should not be used for graded assessments.

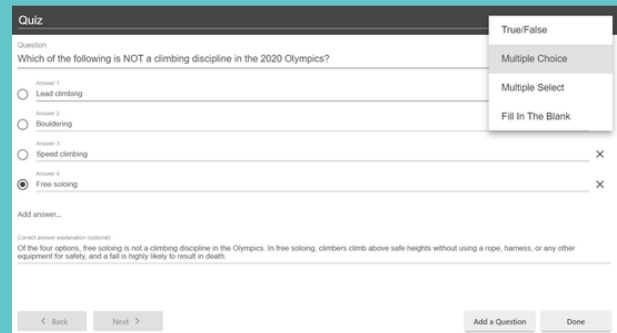


Figure 2. Creating a quiz in Panopto (note the four possible quiz formats at the top right corner).

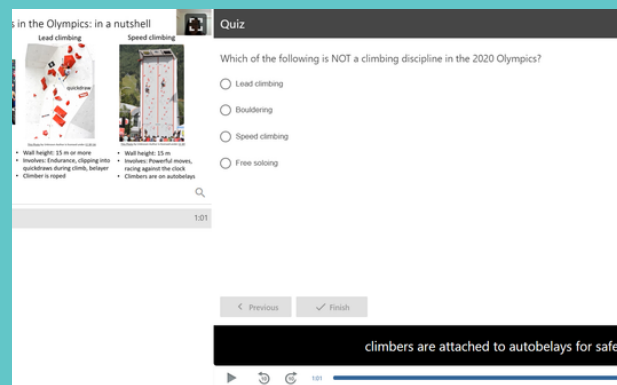


Figure 3. Student view of a sample embedded quiz in a video lecture (Panopto).



CAPTIONING IN VIDEO LECTURES (FIGURE 4)

- Useful feature, especially if audio quality is not optimal
- Two ways to add captions retrospectively (i.e. not real-time captioning of live lectures):
 - Using third-party captioning services in [Panopto](#) or [Zoom](#)
 - Note that the automatic speech recognition captioning function is often and largely inaccurate and will require editing. (e.g. It did not recognise my Singaporean accent at all.)
 - Only supports English language
 - [Manual captioning](#) (Panopto)
 - Can be (very) time-consuming. Progressive enhancements are strongly advised.
 - Prepare a script (a more efficient way to create captions manually). Care should also be taken to avoid sounding overly scripted and unnatural during recording.



Climbing is a sport that debuted in the Tokyo 2020 Olympics this August.

Figure 4. An enriched PVL with captions using Panopto.