



ENGAGEDALLAS

End of Year Report 2021-2022 Academic Year

A Word from our Initiative Manager

Wow! What a year. It brings me sheer excitement to see what Engage Dallas has blossomed into in such a short time period. My heart is overwhelmed when I think about the diverse group of people who partnered with us to breathe life into this initiative -- united by a common passion to serve and engage with the local community. What was once an idea for monthly service experiences via the Residential Commons has expanded into a program supported by five offices across campus, offering four unique ways for students to participate in service, three resource libraries to contextualize social problems and why our work is important, two large-scale signature events, and one collective impact initiative reaching beyond the Hilltop.

It has been a joy to work with a collaborative team of students from various majors, faculty from different disciplines, staff members across the university, and community partners throughout South and West Dallas. Words on a page cannot truly convey the gratitude that I have for the Engage Dallas team. Your energy and effort did not go unnoticed. We have run hard this year and I hope this report provides a glimpse into the dynamic work the Engage Dallas team has done.


Audryanna Reed

Wins from This Year

- Established two signature events: #1Day4Dallas & One Night for Dallas
- Partnered with 33 community organizations
- Launched individual service: solo, individual pathways, & internships
- Released three resource libraries

Goals for Next Year

- Increase staff & faculty engagement in Engage Dallas
- Establish the Engage Dallas Advisory Board
- Routinize marketing and communication efforts
- Solidify the Student Director role as a premiere leadership experience

In this report...

1	<i>A Word from Our Initiative Manager</i>	6	<i>#1Day4Dallas, One Night for Dallas</i>
2	<i>What is Engage Dallas?</i>	7	<i>On the Blog</i>
3	<i>Commons Partnerships</i>	8	<i>Social Outreach</i>
4	<i>The Student Experience</i>	9	<i>Engage Dallas Staff & Student Directors</i>
5	<i>Engage Dallas by the Numbers</i>	12	<i>Contact Us</i>

What is Engage Dallas?



OVERVIEW

Engage Dallas is a campus-wide initiative bringing community engagement opportunities to each student as a part of their interaction with the Commons and the Core Curriculum. This initiative allows SMU's Residential Commons (RC) to address community needs in South and West Dallas through a long-term partnership between campus, Dallas residents, and community organizations.

BRIEF HISTORY

The Engage Dallas initiative began in Spring 2019 when Boaz Commons was given a donation earmarked for community service. They quickly partnered with Social Change and Intercultural Engagement (SCIE) to develop a program to follow the following year. The pilot program aligned with the Residence Life and Student Housing (RLSH) goal of RC-based sustained service relationships as a high impact educational practice. Boaz Commons partnered with RLSH and SCIE to put together an Innovation Grant proposal through the Division of Student Affairs, and was later approved for this grant. The Engage Dallas team quickly added partners in the offices of Engaged Learning and General education as the campus curriculum began to change. In October 2020, Engage Dallas was launched campus-wide to all students and was approved as a primary pathway to fulfill the Community Engagement Proficiency and Experience of SMU's Common Curriculum.

Commons Partnerships

Each Residential Commons partners with non-profit organizations dedicated to a specific community need.

Armstrong Commons

Homelessness | *The Stewpot*

Boaz Commons

Food Insecurity | *City Square, Mission Oak Cliff*

Cockrell-McIntosh Commons

College Access and Preparation | *City Square, Mission Oak Cliff*

Crum Commons

Arts as Social Impact | *Remembering Black Dallas, Bishop Arts Theater Center*

Kathy Crow Commons

Environmental Justice | *Trinity River Audubon Center*

Loyd Commons

STEM Education | *Crowned Scholars, Jubilee Park*

McElvaney Commons

Community Wellbeing | *Brother Bill's Helping Hands*

Morrison-McGinnis Commons

Childhood Poverty | *Vogel Alcove, Behind Every Door*

Virginia-Snider Commons

Childhood Literacy | *Readers 2 Leaders*

Ware Commons

Community Rebuilding | *Empowering the Masses, Frazier Revitalization*

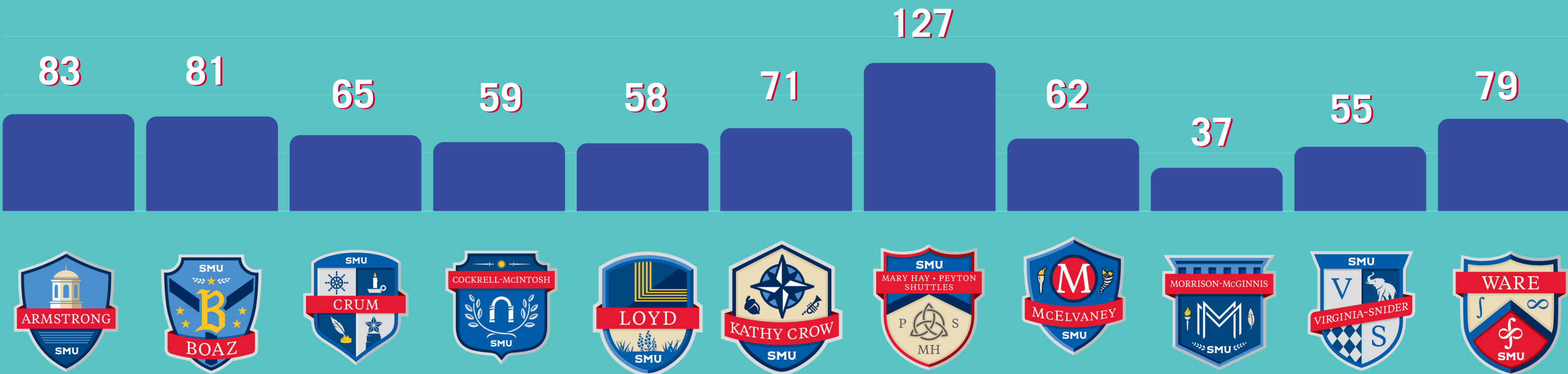


Caption: captioncaptioncaptioncaption



Caption: captioncaptioncaptioncaption

Participation by Commons



The Student Experience

Students follow the arrows to navigate through the Engage Dallas experience. *Follow their progress here.*

614
students

The Basics

This is the first step all students take when first joining Engage Dallas. Students learn more about Engage Dallas' model and identify their Residential Commons' social issue.

244
students

Groundworks

The Groundworks prepares students for direct service with our Community Partners. Students learn the three frameworks that guide Engage Dallas' work and helps students to understand community needs so they can have constructive and meaningful interactions with residents.

182
students

Intent

After completing both the Basics and Groundworks, students can declare their intent to utilize Engage Dallas to complete their Community Experience Proficiency & Experience (CEPE) requirement.

107
students

Online Trainings

Engage Dallas currently offers 21 hours of supplemental trainings for students to continue learning about South and West Dallas and their Residential Commons' social issue. These trainings count towards a student's General Engagement hours.

114
students

Proficiency Course

Once students declare their intent to use Engage Dallas to complete their CEPE proficiency, they are added to a second Canvas course for students who have declared intent.

7
students

Completed Proficiency

Once a student completes their 20 hours of service (a minimum of 10 hours of direct service), student complete their final 8-page reflection and are able to receive their Community Experience Proficiency & Experience credit.

What's next?

After a student completes their proficiency they are welcomed and encouraged to continue serving with Engage Dallas. They also have the opportunity to become leaders in their Commons by serving as an Engage Dallas Student Director or Coordinator.

Engage Dallas by the Numbers

Get connected!

59

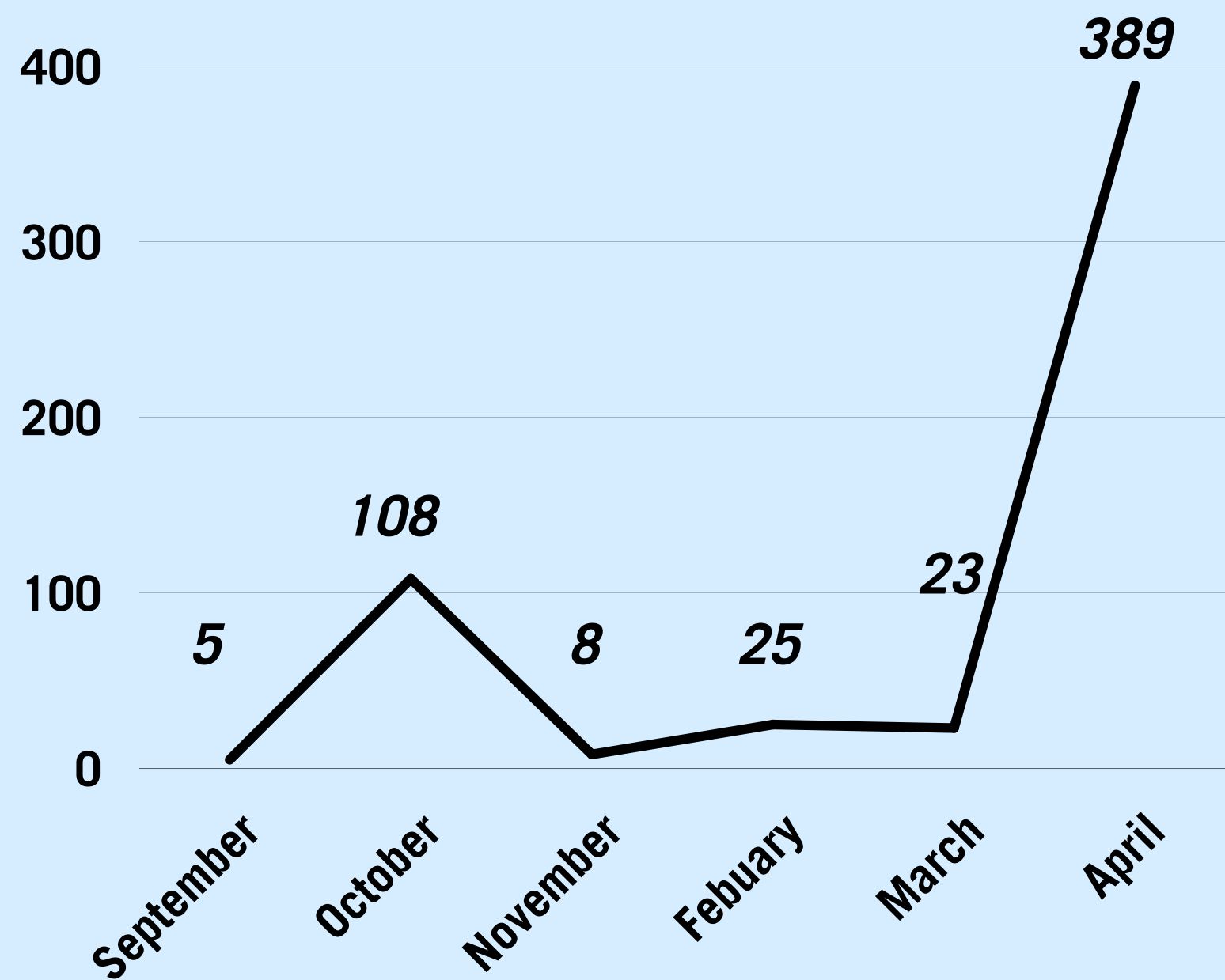
blog subscribers

374

Instagram followers

Direct-service engagement

Participation in direct-service by month



Individual Pathways

Skill-based individual service that students can seek through a community partner on a short team basis; students will leverage their personal skills, knowledge, and talents to support the community partner

to launch
Fall 2022

Solo Service

Solo Service provides semi-structured opportunities for students to volunteer and provide direct service on an individual basis

20
students

Internship

This semi-structured program develops student career readiness gained via experiences offered through community partners affiliated with Engage Dallas

9
students

One Night for Dallas

In April, Engage Dallas hosted our first community partner reception. In attendance were students affiliated with Engage Dallas, The Big Event, and Mustang Heroes, SMU faculty and staff members, and community organizations. Together, we enjoyed a meal, speeches from staff and student leaders, and an awards ceremony celebrating the year!

Looking Back.... #1DAY4DALLAS

Engage Dallas is a campus-wide initiative bringing community engagement opportunities to each student as a part of their interaction with the Commons and the Core Curriculum. This initiative allows SMU's Residential Commons to address community needs in South and West Dallas through a long-term partnership.



WHAT'S NEWS?

Check out blog.smu.edu/engagedallas to stay up to date on our news and events.

Solo service: an individual service opportunity

February 14, 2022

Solo service provides semi-structured opportunities for students to volunteer and provide direct service on an individual basis. Engage Dallas curates these individual service opportunities for students, based on their Residential Commons affiliation, to volunteer as their schedule and the community need align.

A timeline of some of the rich history of South and West Dallas now available

December 20, 2021

Engage Dallas proudly present Phase II of the Engage Dallas Resource Libraries. Our Engage Dallas Research Assistants, Shelby Peck and Cristal Mendez have done it again! Back in September we announced Phase I, which encompasses all common-specific social problems and offers a self-paced, deeper learning experience through four different categories.

Engage Dallas publishes Fall 2021 Executive Summary.

January 31, 2022

In January 2022, Engage Dallas published a 4-page summary of Fall 2021 accomplishments and Spring 2022 goals. Highlights included: 735 students attended Engage Dallas events in the fall semester, #1Day4Dallas Service day included 7 service sites with 105 participants, and 16 new community partners were announced.



Audyranna Reed, Associate Director for High-Impact Practices, speaking at #1Day4Dallas opening ceremonies



Engage Dallas announces 16 new community partners

January 18, 2022

In Fall 2021, the Engage Dallas Offsite and Risk Management Committee noticed that as Engage Dallas grew, the needs of our students and community partners started to vary. As a result, SMU added 16 new community partners along with a variety of flexible service options for students including: monthly group volunteer opportunities, individual opportunities such as solo service and individual pathways, and internships.



#1Day4Dallas: Student volunteers packing gift bags at autumn festival



#1Day4Dallas: Student volunteers serving food to Dallas residents

Who's Engaging with ENGAGE DALLAS?

25

Direct Service
Events

33

Community
Partners

196

Pell Grant
Students

128

First Generation
Students

Fast Facts

900

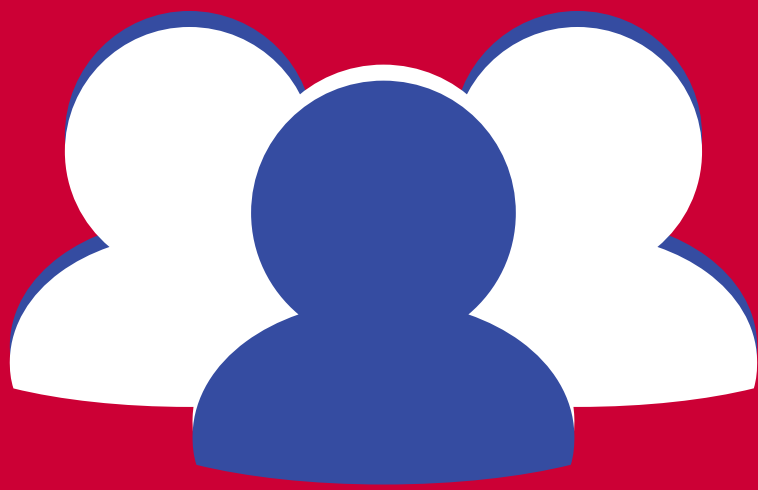
Attendance
at General
Engagement

Attendance at
Direct Service

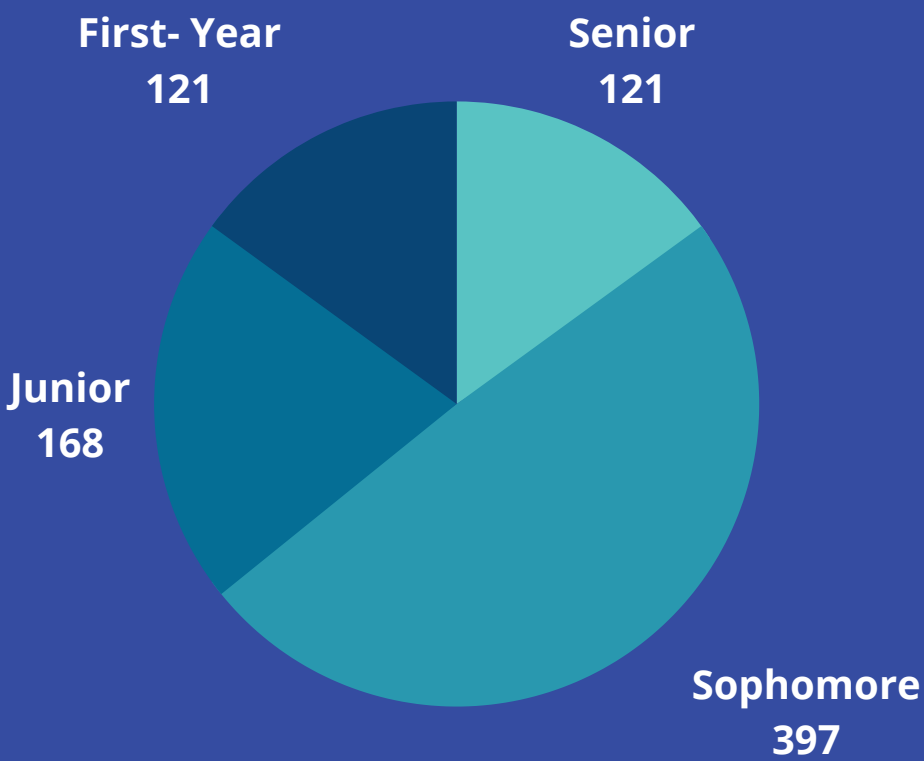
556

3815

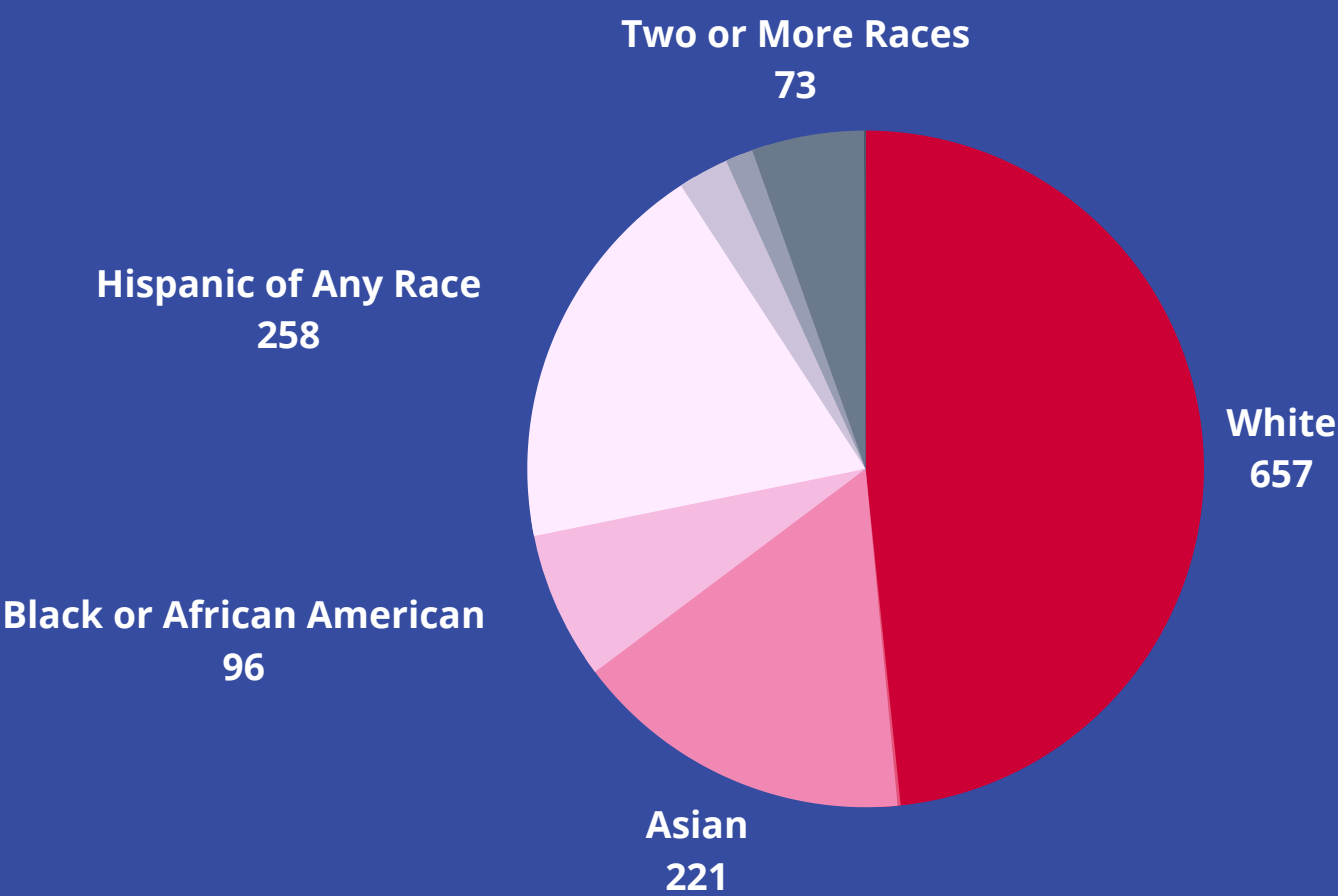
Total Hours



Classification



Ethnicity



Caring for plants at Restorative Farms on #1Day4Dallas

MEET THE TEAM

Engage Dallas Faculty, Staff, and Student Leaders

Diverse, dedicated, dynamic, and community-centered...

These are just a few words to describe the Engage Dallas team.

Learn more about the team of faculty and staff empowering this initiative.
Afterwards, learn more about our student leaders behind Engage Dallas.



Student Leader



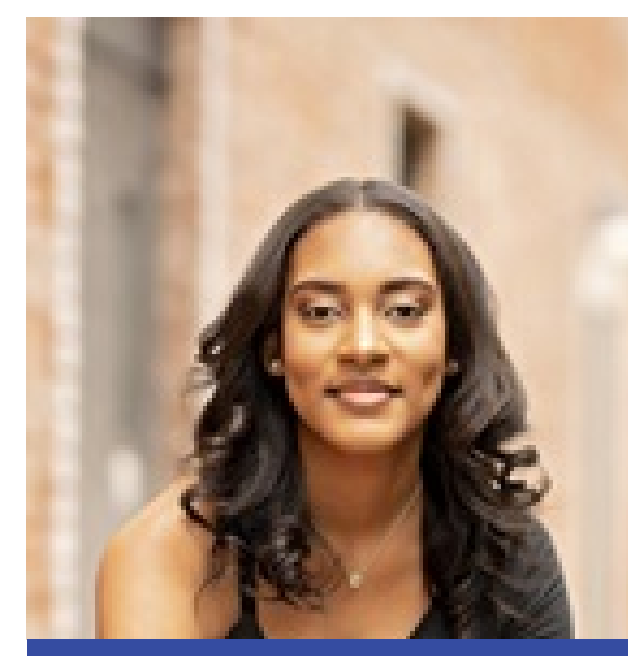
Faculty & Staff

I am excited about the work of Engage Dallas because I get to meet other students who are just as enthusiastic about providing service and giving back to the community.

Tricia Tsang



Jonathan Liu
Student Director for
Boaz Commons



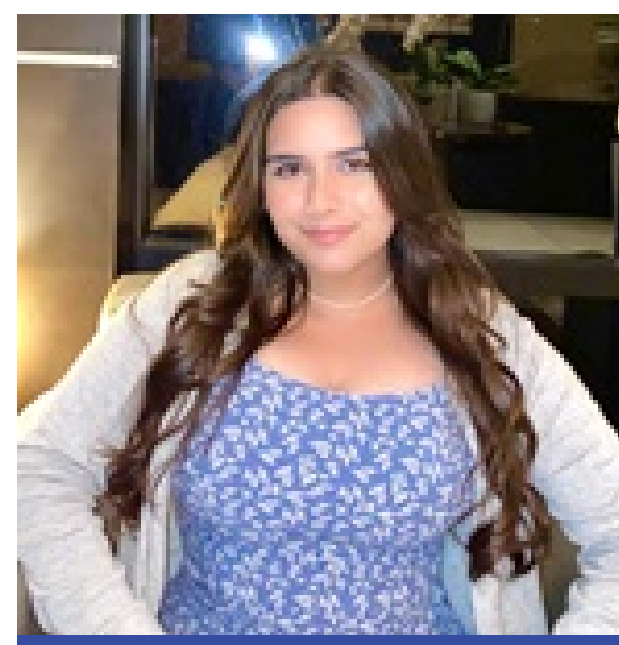
Mackenzie Thierry
Student Director
for Cockrell-McIntosh
Commons



Tricia Tsang
Student Director for
Crum Commons



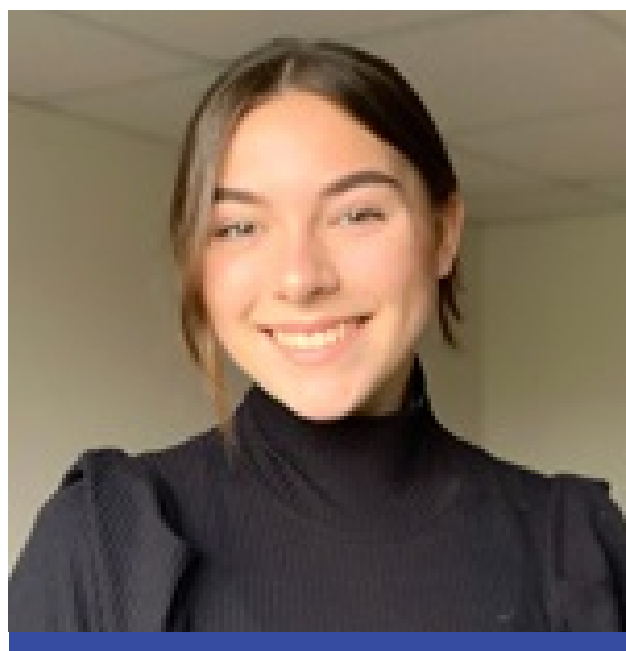
Lilly Chapman
Student Director for
Kathy Crow Commons



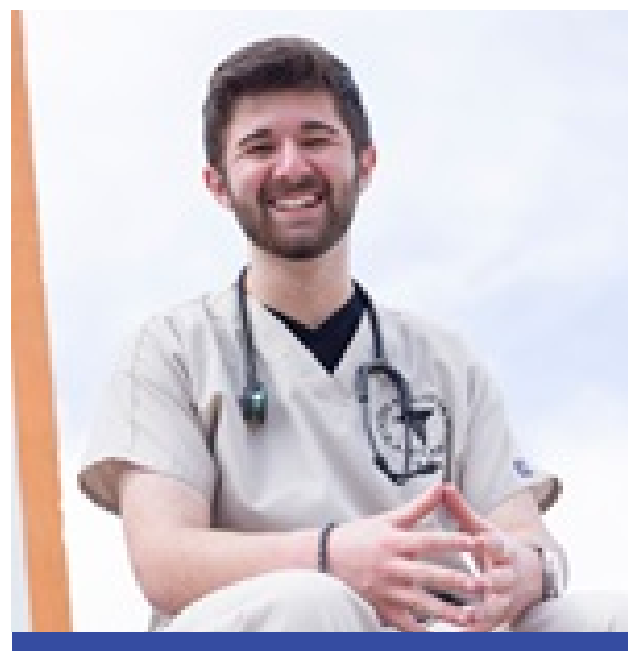
Sabeen Baledina
Student Director for
McElvaney Commons



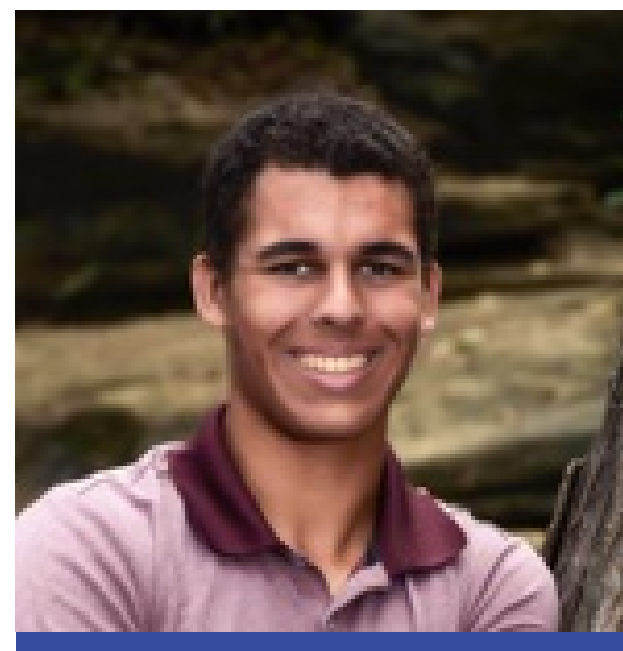
Cydney Curtis
Student Director
for MHPS



Madeline Blazevic
Student Director for
Morrison-McGinnis



Jonathan Cox
Student Director for
Virginia-Snyder Commons



Kirk Thomas
Student Director
for Ware Commons



Albert Mitugo
Assistant Director for
Campus Recreation



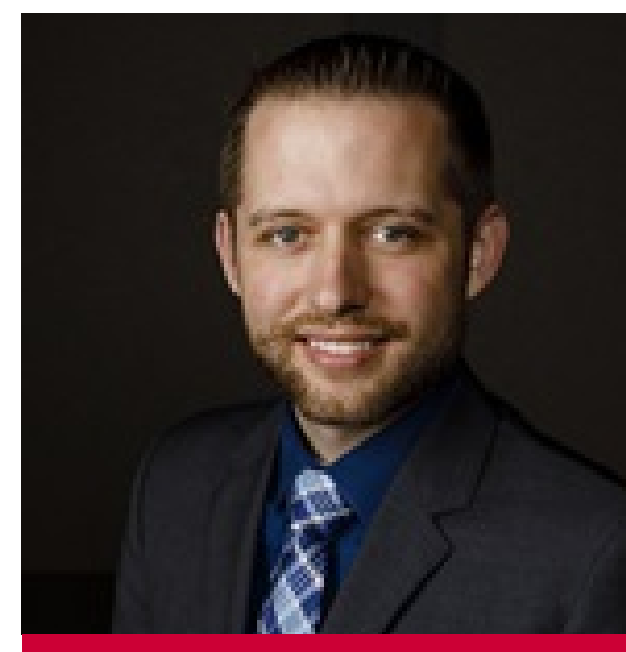
Audryanna Reed
Associate Director for
High-Impact Practices



Brandon Kitchin
Social Change Coordinator



Caitlin Anderson
Assistant Director for
the Hilltop Scholars Program



Dustin Grabsch
Director for
Academic Initiatives



Danielle Palomo
Coordinator for
Community Engagement



Dayna Oscherwitz
Assistant Provost
for General Education

I personally believe that you should serve others if you have the ability and have been blessed to do so. I am excited to get other people hyped about serving their community.

Mackenzie Thierry



Ella Gratzner
Administrative
Student Worker



Jennifer Ebinger
Director for the
Office of Engaged Learning



Jennifer "JJ" Jones
Director of Social Change
and Intercultural
Engagement



Kelyn Rola
Research Professor



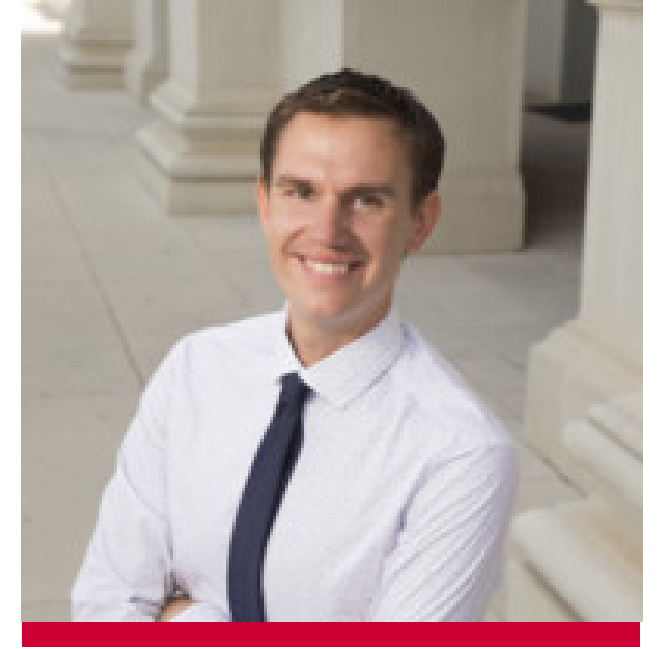
Lauren Bell
Graduate Assistant
for Engage Dallas



Laura Shwartz
Coordinator for the Office of
Student Advocacy & Support



Lauren Eisenschenk
Coordinator for Engage Dallas
RCD for SMU Service House



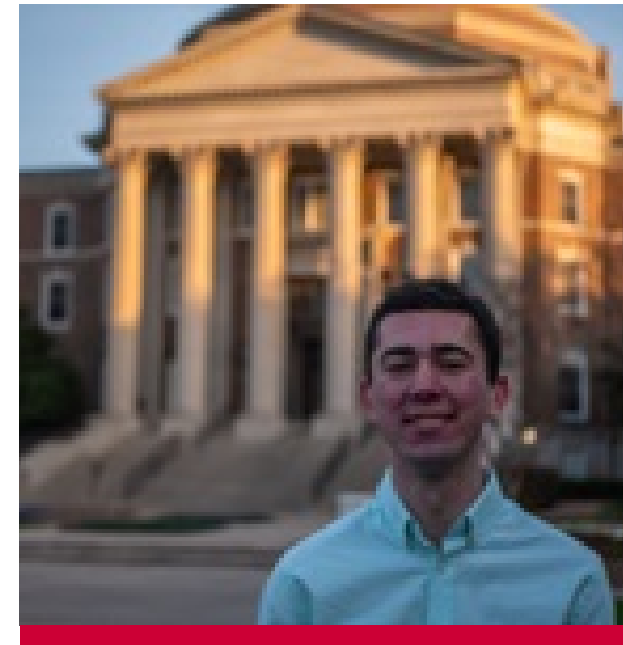
Matt Nadler
Assistant Director of
Employer Relations



Matthew Esparza
Community Engagement
Graduate Assistant



Robert Braswell
Director for Student Conduct
and Community Standards



Ryan Leibowitz
Undergraduate Research
Assistant



Shelby Martin
Undergraduate Research
Assistant



Eduardo Yanez Pastene
Administrative
Student Worker



Staphany Lopez-Coronado
Assistant Director for Social
Change and Intercultural
Engagement



Stephanie Howeth
Assistant Director for
Marketing and
Communications



Wendelin Donahue
Director of Community
Engagement

The reason why I serve my community is because I want to help heal and fix ongoing issues in our community. Us as individuals have to come together as a team in order to make a difference.

Gigi Kinani



Gigi Kinani
Student Director for
Armstrong Commons



Sayumi Mahawanniarachchi
Student Director for
Armstrong Commons



Camille McCallum
Program Specialist
for Entrepreneurship



Contact Us

Physical Address

Hughes-Trigg Student Center
Suite 218
3140 Dyer Street
Dallas, TX 75205

Mailing Address

Engage Dallas
C/O Social Change and
Intercultural Engagement
P.O. Box 750436
Dallas, TX 75275

Email

engagedallas@smu.edu

Phone

214.768.5050