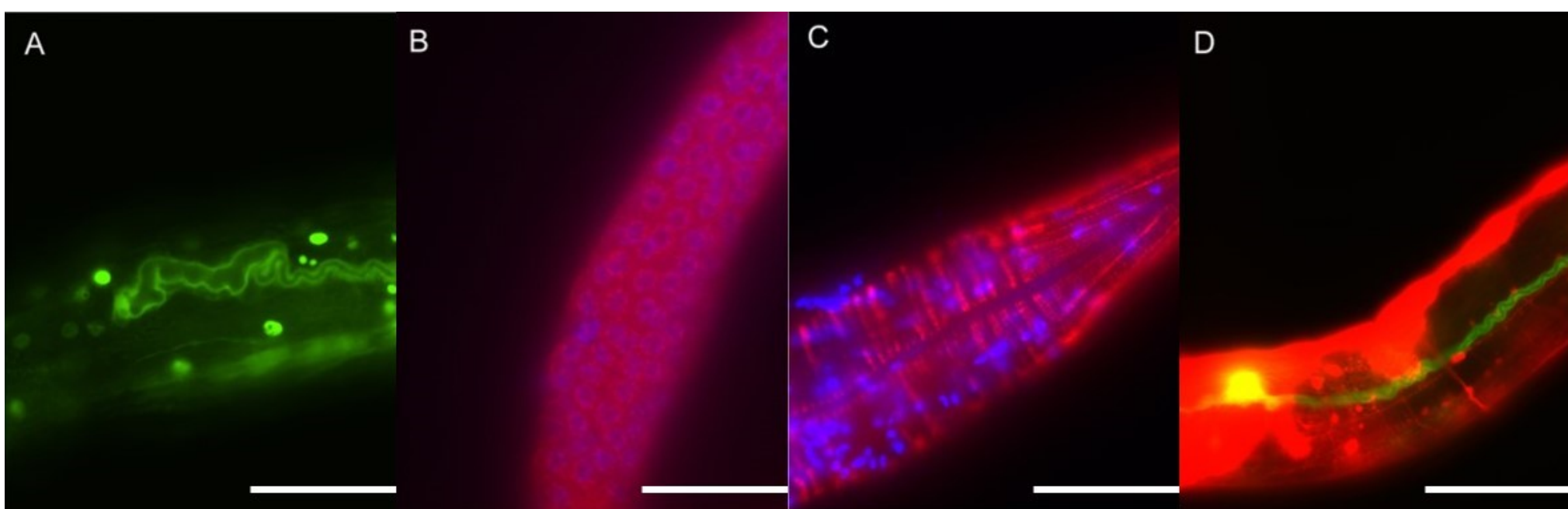


All links in this newsletter are provided below



Who knew worms were so cool?

The Lee Lab sure does! Peter Sheesley worked his magic with the Nikon TE2000-U epifluorescence microscope for a recent conference. He investigates the role of integrin and extracellular membrane proteins in gonad, excretory canal, and muscle development using several β -integrin, cytoplasmic tail, NPXY motif mutants. GFP: excretory canal, MH25 red: β -integrin, DAPI blue: nuclei, RFP: neuronal cells.

It's a girl!

We are excited to congratulate Andrew and Emily Cox on the arrival of their beautiful baby girl, Molly, on August 22nd, at 7lbs 11.5 oz, 20 inches. She is sister to an older brother, Jacob. She loves ceiling fans, cracking smiles, clouds in the sky, and being held. Fun fact: thanks to her brother, Molly may hold the world record of number of times per day of life listening to the Moana soundtrack. It averages to somewhere between 4-7 times/day.



Looking for those good vibes?

Join CEGSS as we work with Keep Waco Beautiful on **11/8 and 11/9 from 3-6 pm** to help elderly residents in District 1, areas north of Baylor and across the Brazos, move bulky trash to the curb. Volunteers will be provided with shirts and water. Sign-up [here](#). Contact Brittany Perrotta (Brittany_perrotta@baylor.edu), our Volunteer and Service Coordinator, with any additional questions.

Also stay tuned for info about a CEGSS-hosted full workshop (about a half-day in length) focusing on ways to handle stress in graduate school.

Dr. Rutherford has arrived

We welcome the arrival of Dr. Julianne Rutherford to meet with graduate students across departments and give a seminar on **Tuesday November 6th, 2-3pm in the BSB E.227**. She will be in Waco 11/5-6 and has opportunities to meet with students one-on-one. You can read her SAFE [paper](#) and the policy [paper](#). Get in touch with a CEGSS representative to learn more or set up a time to meet with her!

THE QUICK NEWS



CEGSS MEETINGS

E401 10-11AM

> GENERAL **11/09**

> PEER REVIEW **11/30**



WRITING GROUPS

Monday 1-3 PM

Tuesday 9-11 AM

Wednesday 9-11 AM

Thursday 9-11 AM



NETWORKING

We were so thrilled to have Dr. Leigh Greathouse talk to us about networking at our last meeting. If you have other ideas or things you'd like to learn about, send us an email!



WE'VE GOT (E)MAIL

We are excited to announce that we have an official email address. Get in touch with us at **ceggs@baylor.edu**

UPCOMING EVENTS



FACULTY/GRADUATE STUDENT DINNER

11/10 @ 6pm

Dr. Doyle's House ([address](#))

Please help with car-pooling ([sign up](#))



EFFECTIVE STEM COMMUNICATION WORKSHOP (PYPHD)

11/8 @ 3:30pm

BSB C.124

[RSVP](#)



WEBSITE BUILDING WORKSHOP

12/3 @ 1:30-3:30

BSB E.234

[RSVP](#)



RELIEVING STRESS IN

GRAD SCHOOL WORKSHOP Early-Mid February
Time and Room TBD



Dr. Julianne Rutherford
Biological Anthropologist from University of Illinois at Chicago

Tuesday, November 6th at 2 pm
BSB E227

All are welcome to attend

Dr. Rutherford will be speaking on the SAFE (Survey of Academic Field Experiences) paper she and her colleagues authored on survey data gathered regarding harassment experienced during field work, as well as how aware victims were about reporting mechanisms and options. Their second paper "Signaling Safety: Characterizing Fieldwork Experiences and Their Implications for Career Trajectories" extends the findings from the SAFE paper and also addresses policies and procedures which could be implemented to improve the experiences in field work settings.