



“Present Your PhD”

Collaborator Packet

Baylor University
presentyourphd@baylor.edu
blogs.baylor.edu/presentyourphd | [@baylorpyphd](https://twitter.com/baylorpyphd)

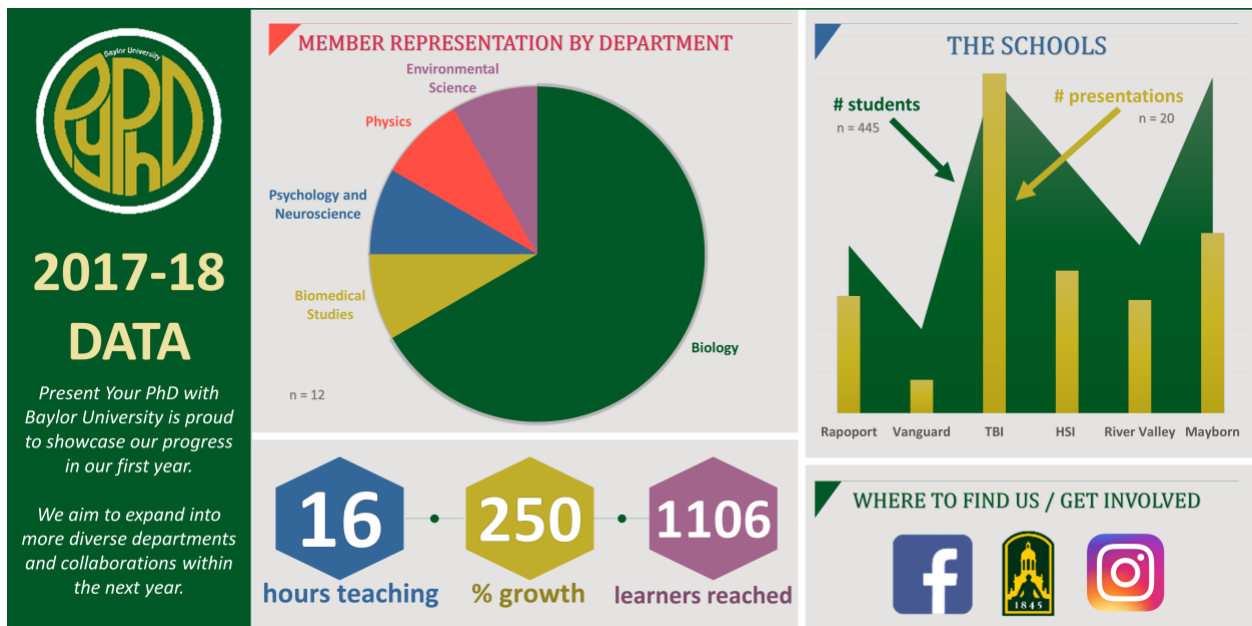
About the Organization

The Baylor “Present Your PhD” outreach student group is founded by doctoral students in the Biology Department at Baylor University, located in Waco, Texas. We aim to develop new ways to make a difference in science education at the local level. Inspired by the parent program at University Texas Austin, “Present Your PhD” will are modeled similarly to bring professional-level science into classrooms and the community.

Currently, participating doctoral students at Baylor University participate in this outreach program by first introducing the idea of graduate work and a thesis, then presenting an audience-appropriate version of their Ph.D. thesis in classrooms of kindergarten through 12th grade.

The outcome is emerging scientists increasing their science communication skills by relating their discoveries with K-12 students and providing real-world examples that will complement science topics covered in a classroom.

Statistics



Structure

Organizers

A volunteer organization of graduate students, run by graduate students.

Organizers:

- Initiate and facilitate Ph.D. thesis lecture series
- Organizers are responsible for maintaining contact with collaborating groups and organizing presentation times and presenters
- May choose to be actively presenting or act administratively

Presenters:

- This may include students acting as organizer
- The main responsibility of a “presenter” is to introduce their Ph.D. thesis to a broad audience at the appropriate learning level and be available to give a talk at least once per semester.

Presentations

“Present Your PhD” commits to two shorter visits or one long visit with collaborating groups per semester. The first half of the presentation introduces the idea of graduate school/students, research, and what a PhD means; the second focuses on the PhD student(s)’s thesis research at a level appropriate for the classroom/audience.

Each portion of the presentation aims to last approximately 20 minutes long, including 5 minutes for questions. This will fluctuate based on the setting. Presenters are encouraged to include learning activities as part of their presentation, as well. Presenters are encouraged to view past presentations and work with their organizer, other members of their lecture series, and the Graduate School to help develop an effective and age appropriate talk.

We are proud to include presenters from several departments at Baylor: Biology, Biomedical Studies, Psychology and Neuroscience, Environmental Science, and Physics.

Increasing Collaborating Partners

Increasing the number of cooperating partners will be achieved through support of the Baylor Graduate School, local connections, and novel traffic to the “Present Your PhD” webpage hosted on the Baylor Graduate School homepage, our blog, and our social media accounts. A key component of this outreach program is to provide graduate student members with experience in initiating and developing ongoing relationships in their community. Each member is encouraged to develop a partnership with new schools, libraries, community centers, etc. Our aim is to increase awareness and interest in academic research for learners of all ages in the Waco community.

Target Audience

Our primary target audience is K-12 students with a desire to learn more about scientific research and how it applies to the “real world”. We hope to partner with schools that have a desire to establish lasting partnerships. Our secondary target is community outreach centers that will help us reach greater audience diversity and will assist in spreading awareness of the program. We strive to present to and represent diverse groups (women in science, people of color in science, international students, etc.).

Collaborating Groups

Schools

Rapoport Academy Elementary Campus – Grades PK-1

PyPhD has been collaborating with over 72 first grade students at Rapoport since Fall of 2017. We have an ongoing and thriving relationship with the incredible teachers who help us promote positive and diverse representations of scientists.

Midway ISD Elementary – Grades 1-8

One of our newest (and biggest) collaborators, Midway ISD Elementary offers our members the opportunity to work with over 600 of our youngest students, at 6 campuses. Midway ISD challenges PyPhD to excel in our presentation consistency while providing us with amazing support.

Harmony Science Academy – Grades K-6

HSA is a public charter school dedicated to providing rigorous and high-quality STEM education for their K-6 students. The collaboration with PyPhD allows for younger students to be exposed early to the diversity present in STEM, and help see themselves in STEM positions. We look forward to a continued collaboration with HSA.

River Valley Intermediate – Grades 5-6

Since the Fall of 2017, PyPhD has been collaborating with the 6th grade classes at River Valley Intermediate, part of the Midway Independent School District. PyPhD is excited to continue sharing our research and enthusiasm about STEM fields to this inspiring group of students at River Valley.

Harmony School of Innovation – Grades 6-12

Representing one of the tightest curriculum-to-research matched collaborations, HSI offers presenters a unique opportunity to witness direct applications of their research to the material being taught in the classroom. We are excited to continue our collaboration with these advanced-track, science-minded upperclassmen.

Vanguard College Preparatory Academy – Grades 7-12

With a robust emphasis on rigor and personalized learning, Vanguard's mission strongly aligns with that of PyPhD. We are fortunate to have been collaborating with students from all grades across the school who challenge our members with insightful questions.

Texas Bioscience Institute – Grades 9-Junior College

Since Fall of 2017, TBI has been the most rigorous school PyPhD collaborates with. TBI fosters incredible opportunities for our presenters to be challenged by some of the brightest up-and-coming scientific minds Texas has to offer.

Community Involvement

Mayborn Museum / Portal to the Public

PyPhD is so thankful for the continuous support from Mayborn Museum and their outreach mechanism, Portal to the Public. Their collaborating team has been instrumental in encouraging our members to participate in their rotating exhibits and special events. Portal to the Public has also provided invaluable science communication training to our members.

Presenter Information

Research bios for all our active presenters are available on our blog

blogs.baylor.edu/presentyourphd/presenter-bios