

Key Signatures- Major/Minor Scales

(Review)

1. Put in the clef sign, write the proper key signature and place the starting note of the scale in the following exercises.

Treble Clef



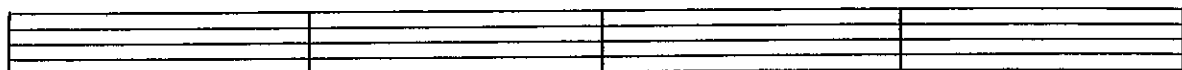
A

G \flat

B

E \flat

Bass Clef



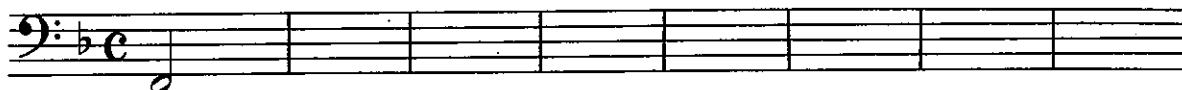
D

B \flat

A

G \flat

2. Using half notes write the MAJOR SCALES ascending and descending for the following key signatures.



3. Determine the relative minor keys of the following Major Keys. (use small letters and proper accidentals.)

| Major Scale | Relative minor Scale | Major Scale | Relative minor Scale |
|-------------|----------------------|-------------|----------------------|
| C | _____ a _____ | G | _____ |
| F | _____ | D | _____ |
| B \flat | _____ | A | _____ |
| E \flat | _____ | E | _____ |
| A \flat | _____ | B | _____ |
| D \flat | _____ | F# | _____ |

4. Name the following Major Scales; then name and write the relative minor scale of each, as indicated, both ascending and descending.

Key of _____ major

Key of _____ minor (harmonic)



Key of _____ major

Key of _____ minor (melodic)



Key of _____ major

Key of _____ minor (natural)



5. On the staff below, write the enharmonic note in the second measure.



6. How many notes are there in a chromatic scale including the octave? _____

7. What is the interval between the tones of the chromatic scale? _____



(For additional information On Key Signatures and Scales, See Theory and Harmony for Everyone published by Mel Bay Publications, Inc.)