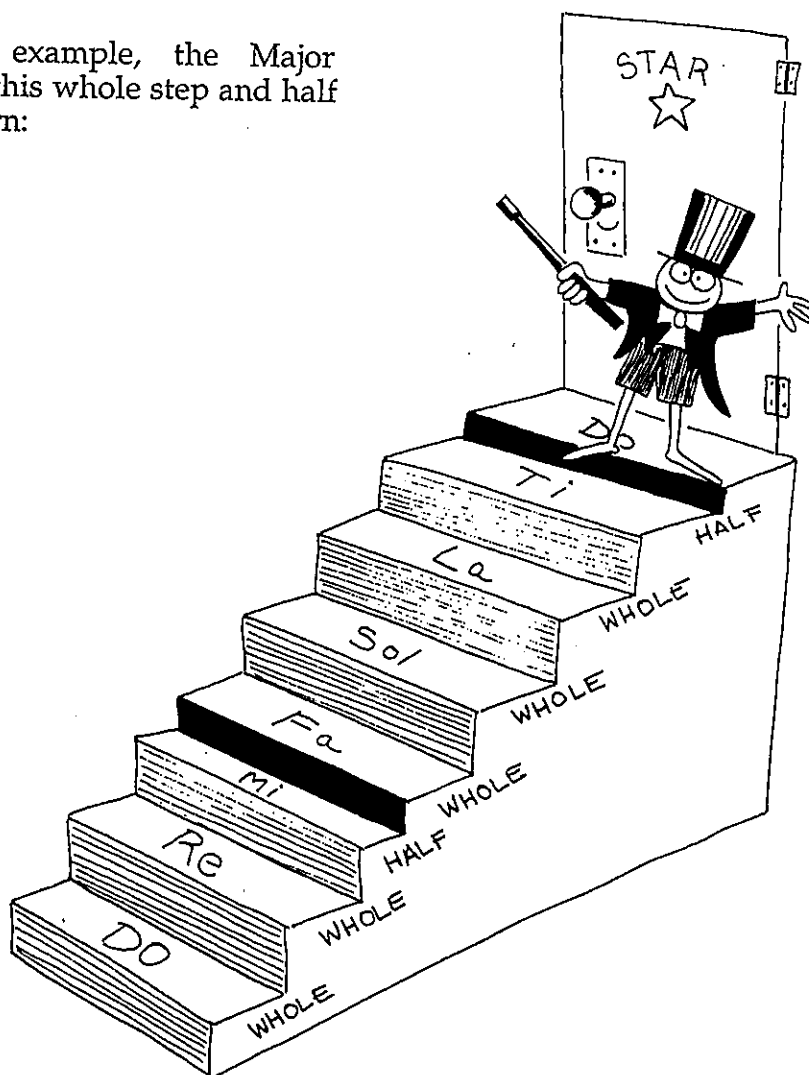


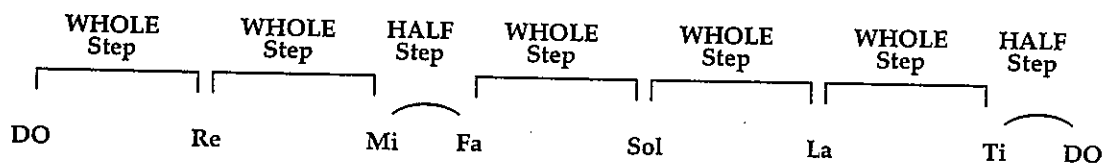
## THE MAJOR SCALE PATTERN

As you know, the *pattern* DO Re Mi Fa Sol La Ti DO is called the Major Scale. The Major Scale, as well as many other scales, is made up of a combination of half steps and whole steps. The *order* in which the half steps and whole steps appear gives the scale its unique sound.

For example, the Major Scale has this whole step and half step pattern:



The pattern of the Major Scale is:



Sing up the Major Scale and as you do, *listen* to the *pattern* of the half steps and whole steps.

Key of D Major

DO Re Mi Fa Sol La Ti DO

W W H W W W H

A piano keyboard provides an easy way in which to *see* the patterns of half steps and whole steps in the Major Scale. When DO is C, all of the white keys are used. Notice that there is a *key (black)* in *between* each of the *whole step* keys, but *no black key* between the *half step* keys.

C ↓ D ↓ E F ↓ G ↓ A ↓ B C

DO Re Mi Fa Sol La Ti DO

W W H W W W H

When singing seconds, remember that *whole steps* are larger sounding *intervals*. They have a note (key or tone) in between. *Half steps* are very *tiny*. They do not have a note in between. Here, the black keys show the notes which are in between the whole step notes. They represent the notes which are *not* sung in the C Major Scale.