

THE  
CONNECTICUT MAGAZINE.

---

AN ILLUSTRATED BI-MONTHLY.

---

Devoted to Connecticut in its Various Phases of History, Literature, Picturesque Features, Science, Art and Industry.

---

VOL. VI.

---

JANUARY TO DECEMBER, 1900.

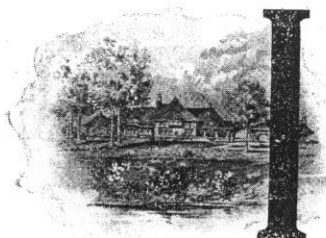
---

HARTFORD, CONN.

Vardon is of the opinion that it would be hard to find a course which offers more possibilities for the development of golf and it is true that indications point to a future for the organization which would be hard to duplicate.

The present officers of the New Haven Golf Club, all of whom with one exception are Yale men, make up a board which manages the organization and are as follows: Joseph T. Whittelsy, 67s; Dr. Frederick L. Chase, 91s of the Yale Observatory; Arthur L. Wheeler, 93, James E. English, and the undergraduate representatives, F. C. Havemeyer, 1900, and T. M. Robertson, 1901, captain of the Yale golf team.

#### NEW HAVEN COUNTRY CLUB.

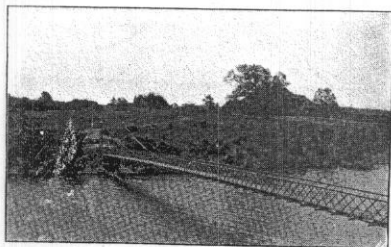


**I**

N 1898 the New Haven Country Club was organized and is today the leading social or-

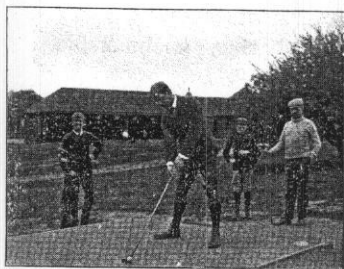
ganization of the city. On an island in Lake Whitney, two miles distant from the center of the city, (a ten minute ride by trolley) is situated the picturesque grounds of the organization. In the acquiring of the property and the laying out of the eighteen hole course a large sum of

money was expended. To complete the charming pleasure resort a handsome stone clubhouse, costing \$20,000, was erected last fall. The architecture of the



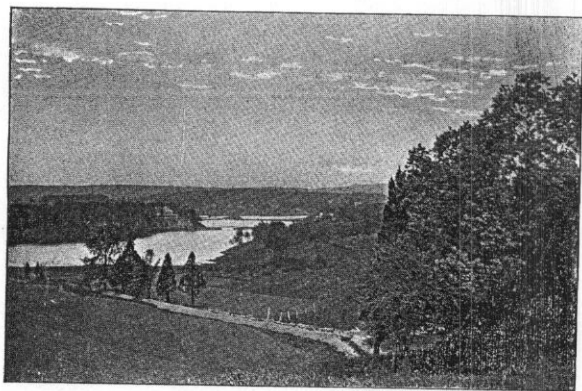
SUSPENSION BRIDGE AND VIEW OF NEW HAVEN COUNTRY CLUB-HOUSE AND GROUNDS.

structure is of the Old English pattern similar to the clubhouses on the courses in England and Scotland. The building

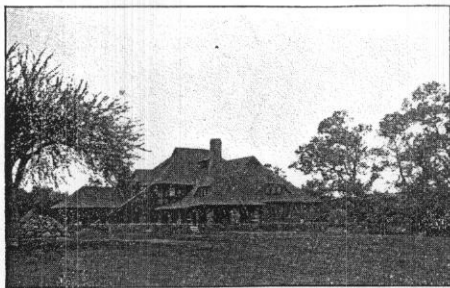


ROBERT SHIELDS, COACH.

is entirely of stone and is low and rambling. A restaurant famous for its excellence is maintained the year round for the convenience of the members. In the clubhouse, far from the noise and bustle of the city, many of the largest social entertainments of the smart set are held. A spacious dancing hall, retiring rooms for the ladies and gentlemen and sleeping apartments complete the modern ideas in the construction of the house.



NEW HAVEN COUNTRY CLUB, VIEW FROM 3RD TEE.



CLUB HOUSE, NEW HAVEN COUNTRY CLUB.

The course stretched out over a large and beautiful countryside area is one that is much sought after and admired by golfers throughout the state. The most painstaking care was observed in its arrangement and neither money nor time were spared to make it meet the almost ideal requirements of the club members.

At present the membership touches 450, with a large waiting list on the club books. One of the features of the architecture of the grounds is the foot suspension bridge, constructed entirely of iron, extending from the Lake Whitney shores

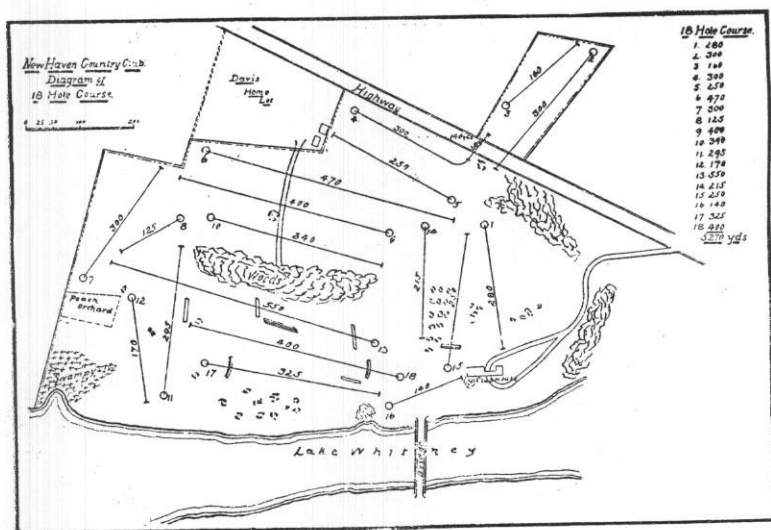
over the surface to the club grounds. A golf course amid more perfect environments could not be imagined. Ever since the day it opened money has been spent in constantly improving the grounds and course and the expenditures have been duly rewarded.

Every day is a gala one at the links and tournaments between members and also between the club and visiting teams are in progress throughout the season. Mr. Henderson, the steward, has charge of the grounds and clubhouse.

The officers of the New Haven Country Club are: President, Henry L. Hotchkiss; Vice-President, General E. E. Bradley; Secretary and Treasurer, George S. Barnum. Mr. Barnum is at present engaged in getting up a book of the Country Club.

#### YALE GOLF CLUB.

THE Yale Golf Club is composed of 200 undergraduates who use the New Haven Golf and also the Country



Club grounds. There has been some talk of securing a private course but it is not probable that such a move will be made before next year.

Vardon's visit together with the natural and expected growth of the game have had the causes of the fine innings golf is now enjoying at Yale.

T. M. Robertson, 1901, of New York City is president of the Yale Golf Club.

#### STAFFORD COUNTRY CLUB.

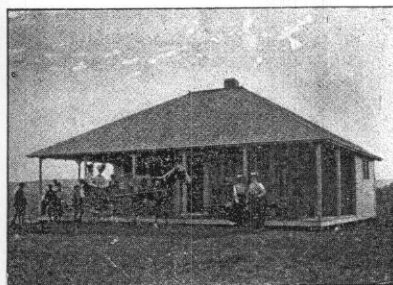
WITH undulating land and natural hazards of brooks, marshes and sand pits the Stafford Springs Country Club is very fortunate in having a good course. The club was organized in the



E. H. PINNEY, CAPTAIN GOLF TEAM  
1898-1899.

spring of 1898 and the links were prepared under the direction of John Shippen, the professional player from the Shinnecock Hills Golf Club. The clubhouse commands a view of the course and there are piazzas on three sides. It has a living-room, refreshment room, lockers for men and women and an old fireplace in one of the rooms gives it a very comfortable appearance.

The links are about one mile from the village and the surrounding country is



CLUB-HOUSE, STAFFORD SPRINGS COUNTRY CLUB.

very picturesque. A pretty brook runs through the club property and there are



MISS MARY CONVERSE, WINNER WOMEN'S TOURNAMENT, SEASON OF 1899.

tennis courts and other forms of sport and recreation. The club was opened July 4,



MISS CLARA KINGSLEY BAKER, PLAYER IN THE FINALS (WOMEN'S TOURNAMENT SEASON 1899)