



Talented

WAITER

Tina

Written by Jen Posner &

Grace Koehler

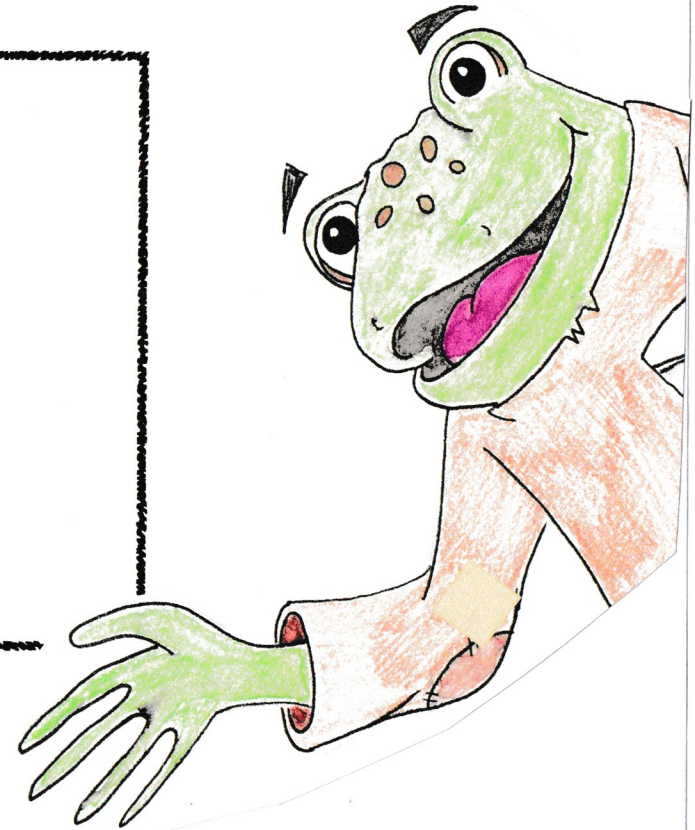
Directed by Catherine Crowley

Illustrations by Madisen Bill

Practice with us!



T and **D**



**Stories and rhymes to improve
speech after surgery to
repair a cleft palate.**



**In a tiny town on Tater Tot
Mountain,**

down a

w

i

n

d

ing

road

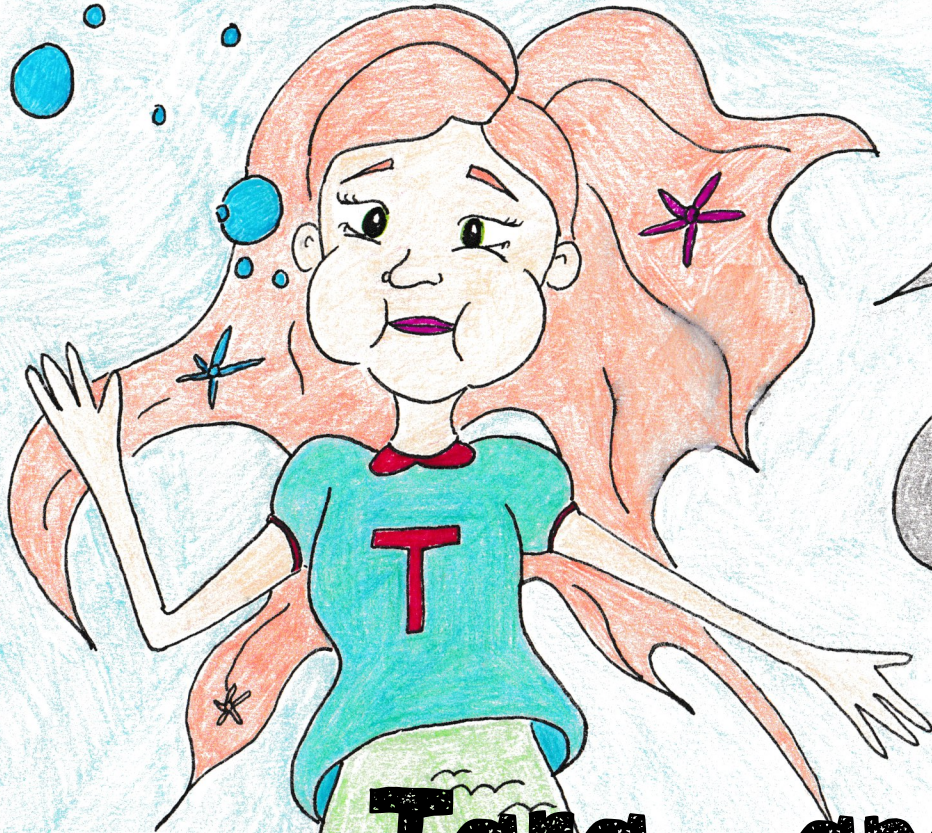
A colorful illustration of a diner on a hill. The diner is a small blue building with a green roof, a red and white striped awning, and a yellow door. A sign above the door says "DINER" and a sign in the window says "OPEN". A yellow path leads up to the diner. In the foreground, a woman with long brown curly hair, wearing a blue headband, orange glasses, a purple top, and a green apron, stands with her hands on her hips. The background features a bright yellow sun, blue sky with white clouds, and green hills.

**Talented waiter Tina
told many a tale at
Dollar Diner.**

**Talented
waiter Tina
told
many
a tale...**



A twin mermaid tale:



Tara

and



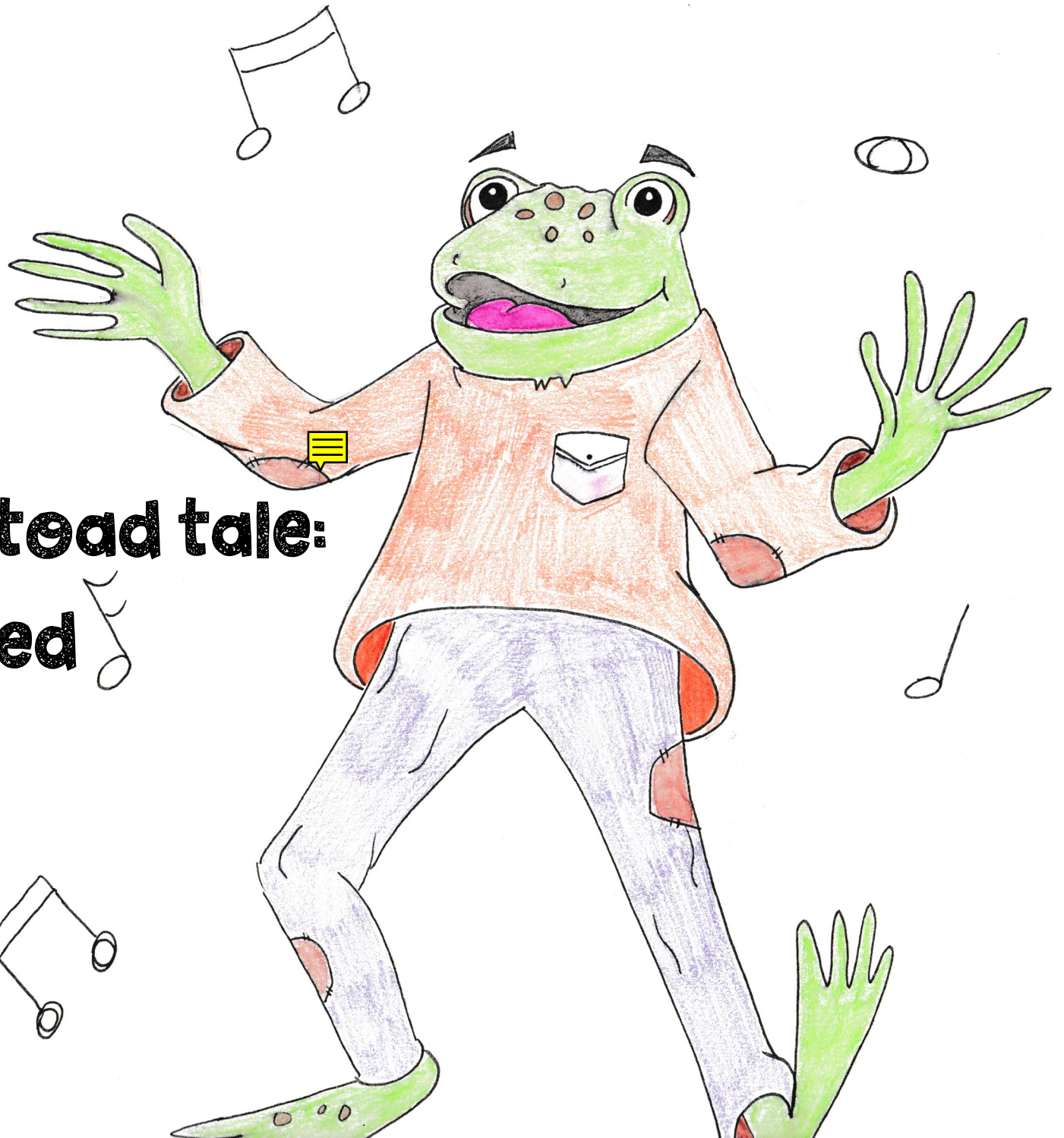
Dara

**who wear
teal**

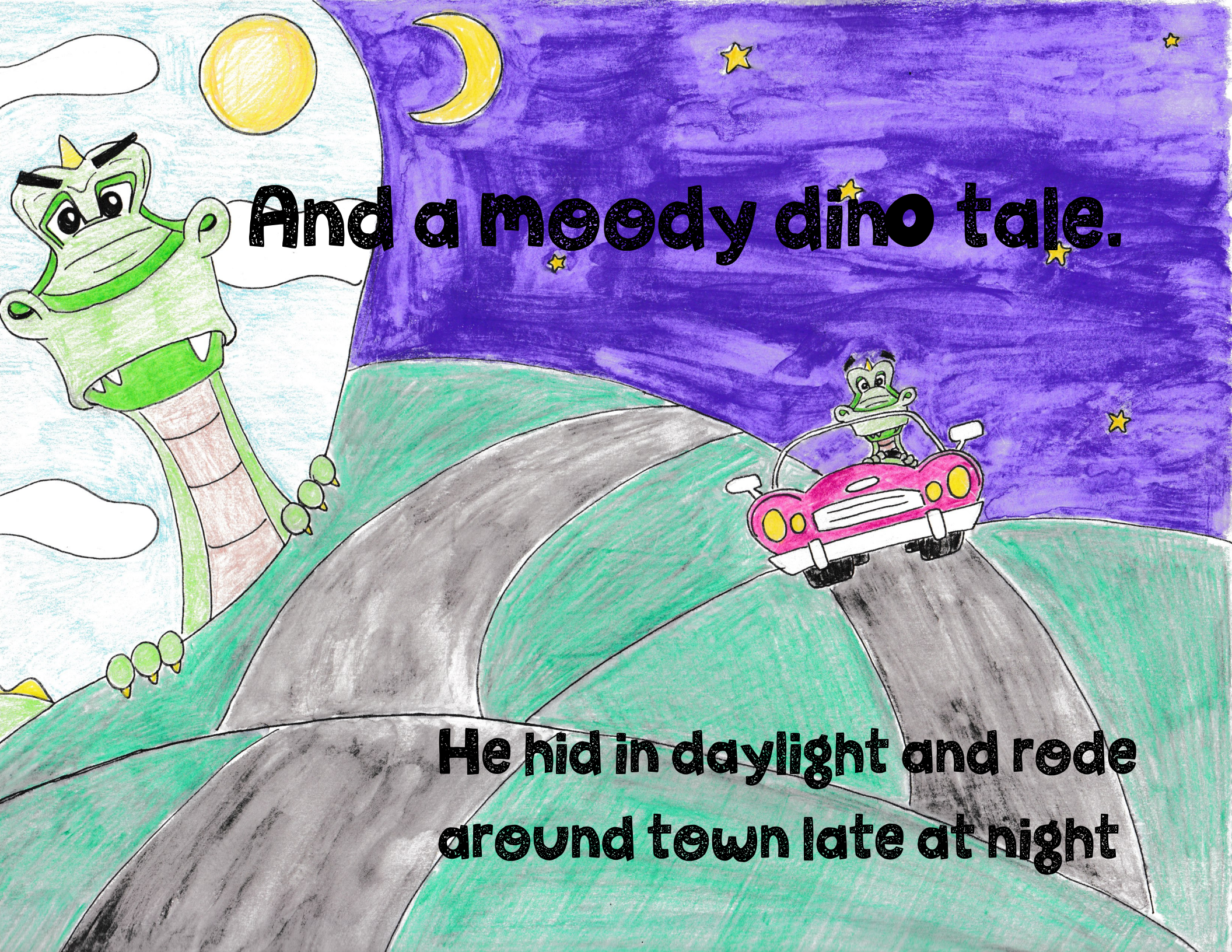




**A tutued turtle tale:
He had two hundred
and ten toes**



**A muddy toad tale:
Who waddled
to a tune**



And a meedy dino tale.

**He hid in daylight and rode
around town late at night**

"Tell a tale at dinner tonight!"



"Do it!"

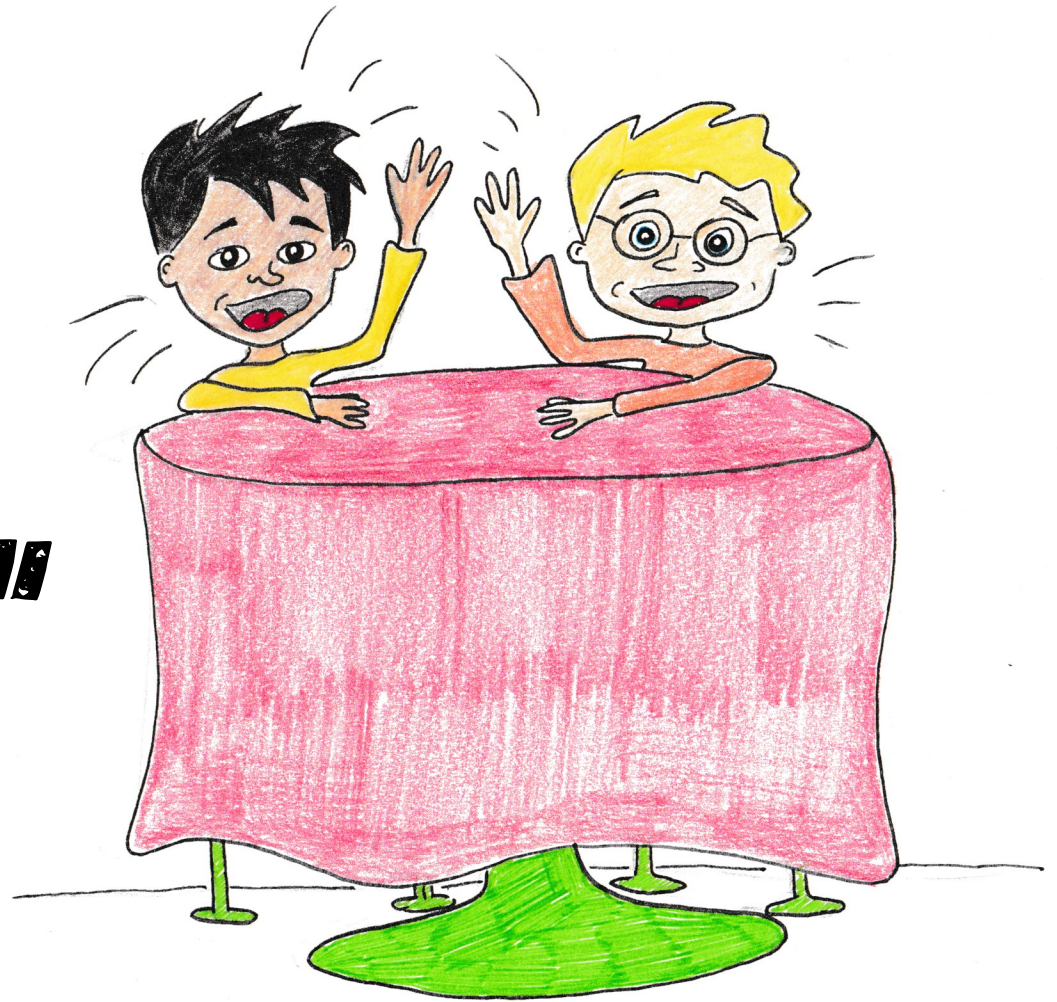
"Do it, Tina!"

"Do it!"

"Tell a tale waiter Tina!"

"Do it!"

"Do it!"



"To me!"

"NO, to me!"



**Tina: "Hold on
one minute!"**

"We won't wait!"

"Alright, deal. Let me do it."

**"Time to
tell a
tale."**



Tina turned her head.

"Oh no! I tired you out."



"Tomorrow I'll tell a tale."



Cleft Palate Speech Tutorial Project

Director: Catherine Crowley CCC-SLP, J.D., Ph.D.

Director: Miriam Baigorri CCC-SLP, Ph.D

Copyright Teachers College, Columbia University 2016

LEADERSproject.org

For information: crowley@tc.columbia.edu

Creative Commons Attribution-Non-Commercial-NoDerivs 3.0

Creative Commons Attribution-Non-Commercial-NoDerivs 3.0

