

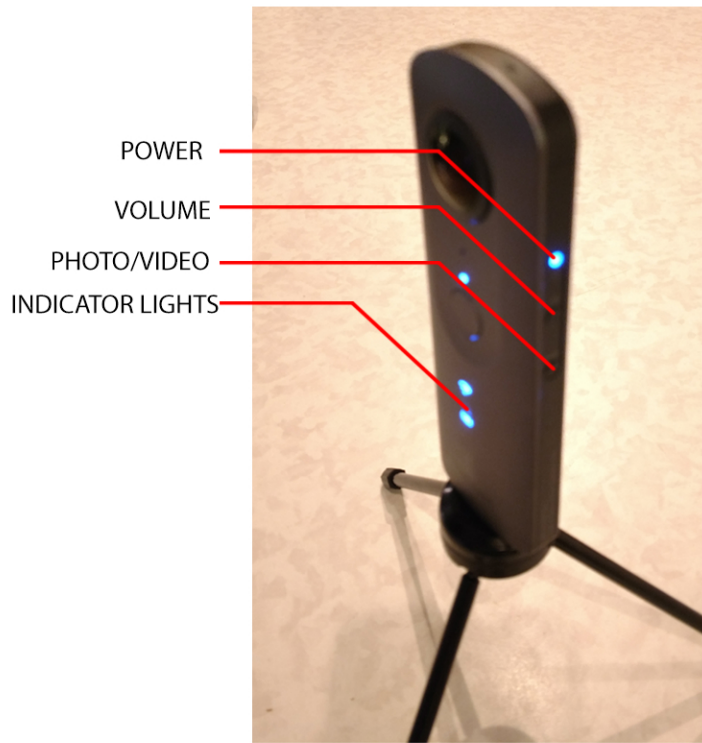
**360 PHOTO AND VIDEO**  
GETTING STARTED WITH THETA 360 CAMERA



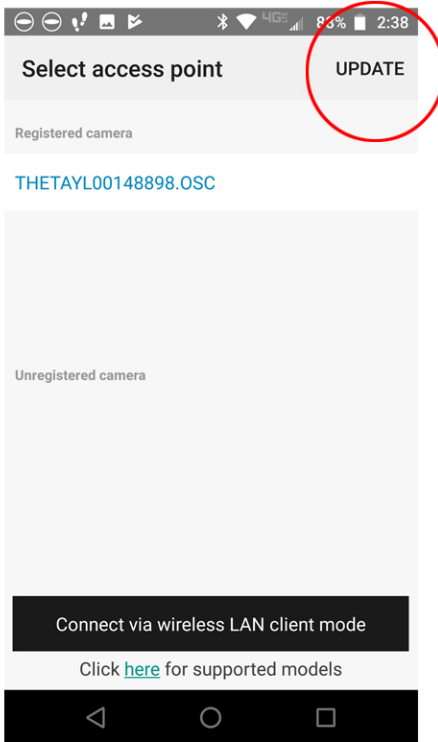
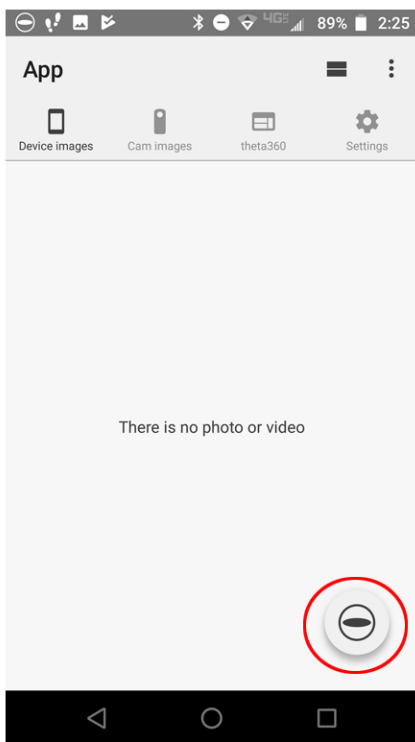
ADK  
MINI TERM

# 360 PHOTO AND VIDEO BASICS

## GETTING STARTED WITH THETA



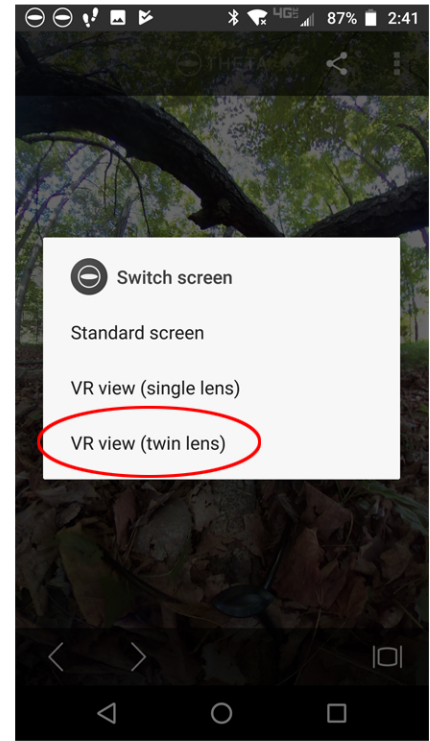
The Theta camera takes 360 photos and videos that can be viewed on computers and with VR goggles. There is a Theta application for mobile devices that allows one to connect to the camera wirelessly. It is possible to view photos on your mobile device and use it as a remote for the camera. Above is the camera with the buttons on the side. Turn on the power, select the photo or video button and wait for the blue indicator lights on the front.



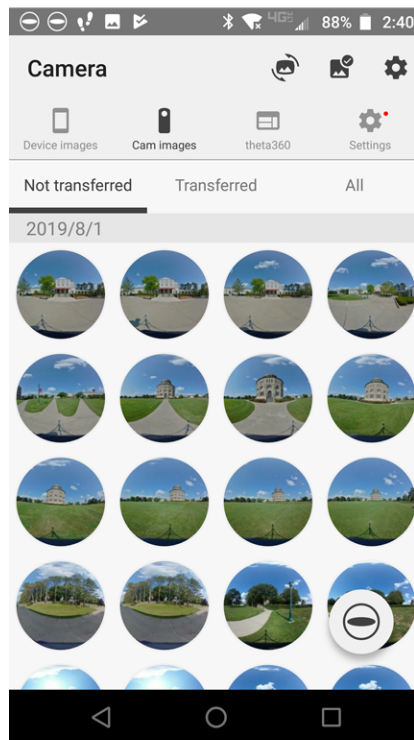
Click on the icon logo in the bottom right to bring up the wireless connection window. If you don't see your device hit the update button in the upper right. Once you see your device just click on it to connect. Once you are connected you will see the images stored on your device if there are any and you can toggle to the images stored on the phone. To take an image simply hit the icon button again.

## 360 PHOTO AND VIDEO BASICS

### GETTING STARTED WITH THETA



That will bring up the camera screen and give you some basic options to explore. Use the button at the bottom to take a photo or video. Once you have captured your content you can view it. By clicking the viewing options you can bring up a dialog box that will allow you to view it in a double lens mode for VR goggles.



To copy images to your mobile device just go back to the home screen and select cam images. You can then see the files that have been transferred and the ones that have not. Select them and copy them to your device. You can now copy them to your computer. Alternatively you can use the USB to connect the Theta to your computer.