

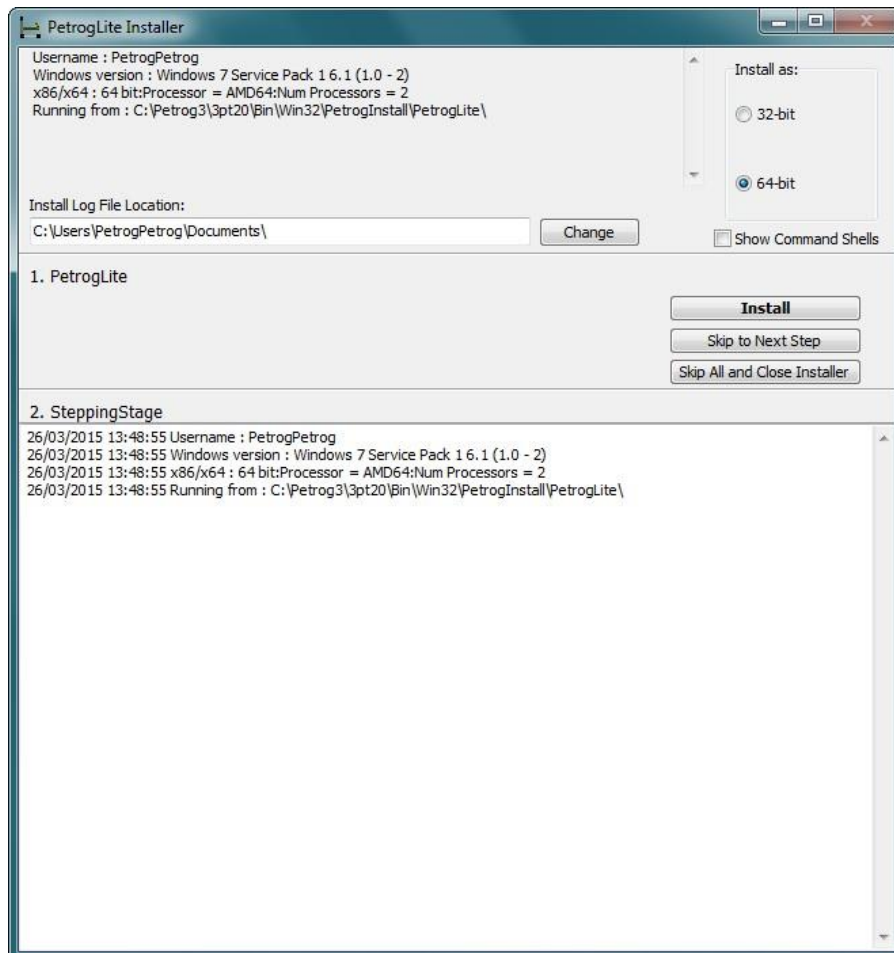
## PetrogLite Installation Guide

This guide details the steps involved in installing PetrogLite. If you are installing from a CD, then simply navigate to PetrogLiteInstall.exe to begin. If you are installing from a download link that has been sent to you by Conwy Valley Systems Ltd. (or an associate thereof), then please download the zip file and extract the contents of the zip file to your hard-drive, and then navigate to PetrogLiteInstall.exe to begin.

Some operating systems and/or anti-virus software may show messages during the installation, indicating that the contents of the CD or zip file are unsafe; or, you may be prevented from running PetrogLiteInstall.exe.

Conwy Valley Systems Ltd. asserts that this software has been tested and all files have been certified as virus-free by a representative set of commercial and third-party anti-virus software tools and that we believe it is perfectly safe to copy or run any and all of the programs and files on this CD or in this zip file. If a warning is, nevertheless, displayed during your installation, that a file has been identified as potentially unsafe, then, depending on which anti-virus software you are using, you should have the option to override such warnings, and we believe that this is safe so to do. In the event that you have any problems or concerns, please contact us at [support@petrog.com](mailto:support@petrog.com).

**STEP 1:** Run PetrogLiteInstall.exe. Once this executable starts, you should see the following screen.



On 64-bit machines, you will see that in the top right-hand corner of the PetrogLite Installer window, there is an option to install as 32-bit or 64-bit. The default selection is 64-bit, as PetrogLite can be installed as a native 64-bit application.

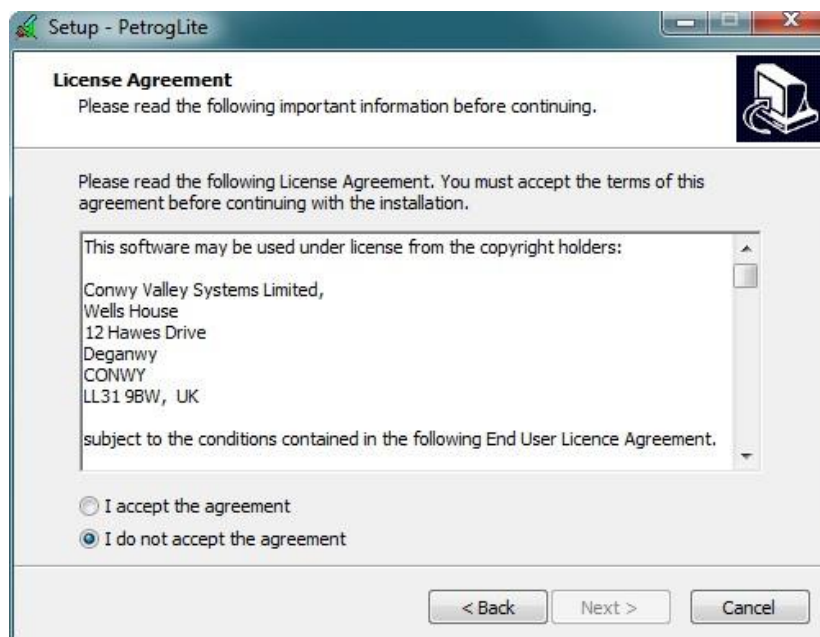
The first step of the install procedure is to install the PetrogLite software. To do this, click the **Install** button in the “1. PetrogLite” panel.

**STEP 2:**



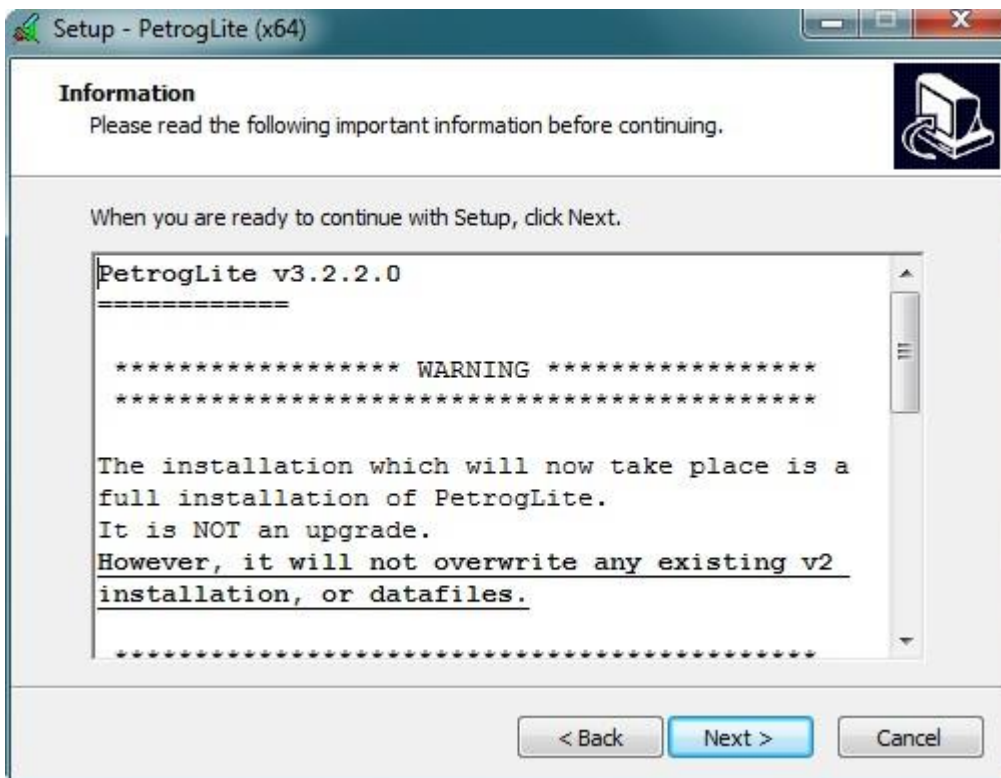
Click Next to continue.

**STEP 3:**



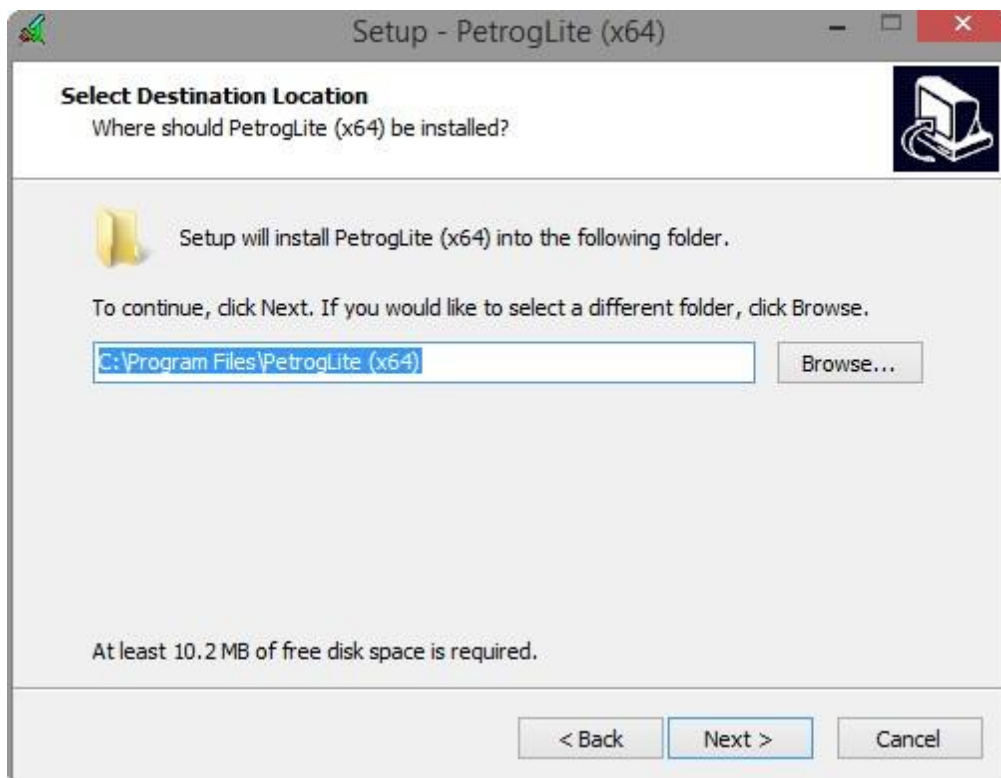
Read the License Agreement, and then click “I accept the agreement” followed by the Next button.

**STEP 4:**



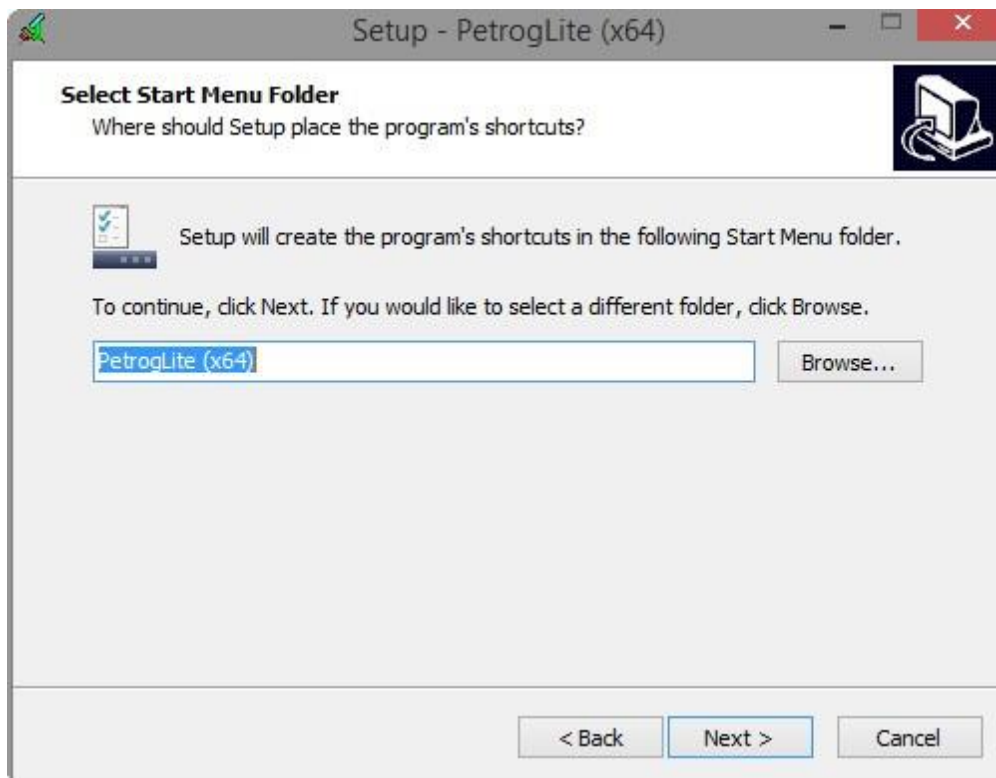
Read the Setup information, and then click Next.

**STEP 5:**



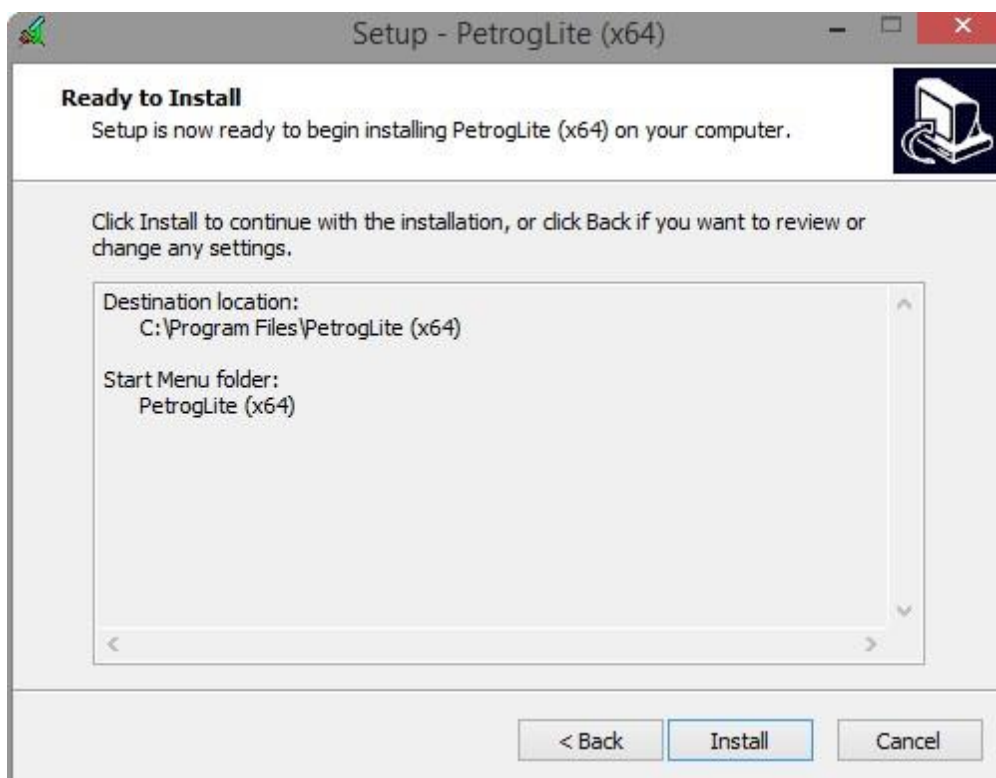
Select the Destination Location, and then click Next.

**STEP 6:**



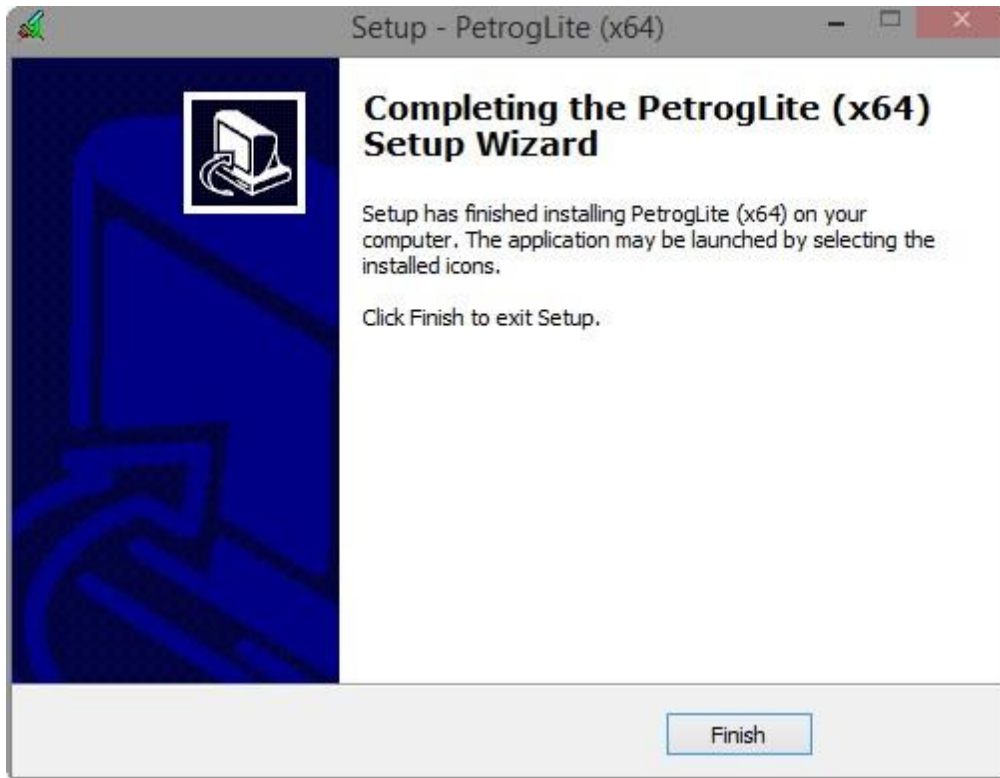
Select the Start Menu folder, and then click Next.

**STEP 7:**



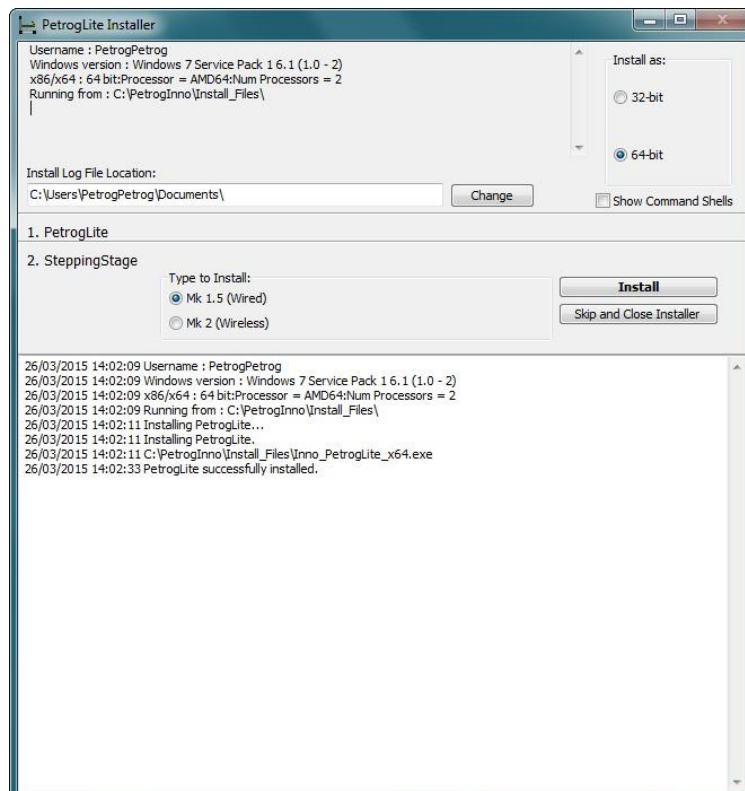
Check and confirm the Installation settings, and then click Install.

**STEP 8:**



Once the software installs, click Finish to complete this step of the install procedure.

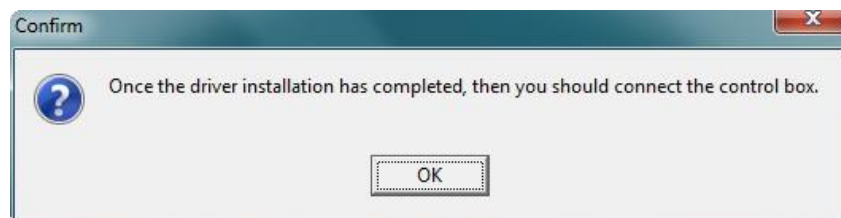
**STEP 9:** Back in the PetrogLite Installer window, you should now see that the “2. SteppingStage” panel has become the active panel.



Choose the correct type of SteppingStage to install, dependent on whether you have purchased the Wired (Mk 1.5) or Wireless (Mk 2) model. Then click **Install**. You will see a series of command prompt windows appear and then disappear as the SteppingStage drivers are installed. Once this is complete, you will see a message



or



dependent on which model you have installed the drivers for.

Having setup and attached the SteppingStage to your microscope (see SteppingStageSetup.pdf for details), you should now plug in (and if appropriate, switch on) the control box to the computer. Then click OK, and then click OK again to close the installer.

NOTE: If you did not see command prompt windows appear during this stage, displaying a message such as

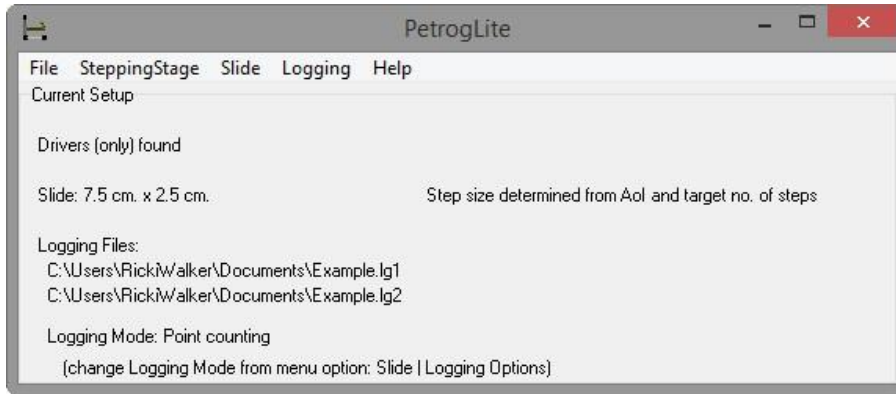
```
64-bit OS detected
"C:\Users\RICKIW\1\AppData\Local\Temp\DPInstx64.exe"
Installing driver..
FTDI GDM Driver Installation process completed.
```

then it will be necessary to run this stage of the installation procedure again: start PetrogLiteInstall.exe in the same way as before, then click Skip to Next Step, then **Install**. If a message similar to that above does still not appear, then please contact us (see the Troubleshooting section at the end of this installation guide for contact details).

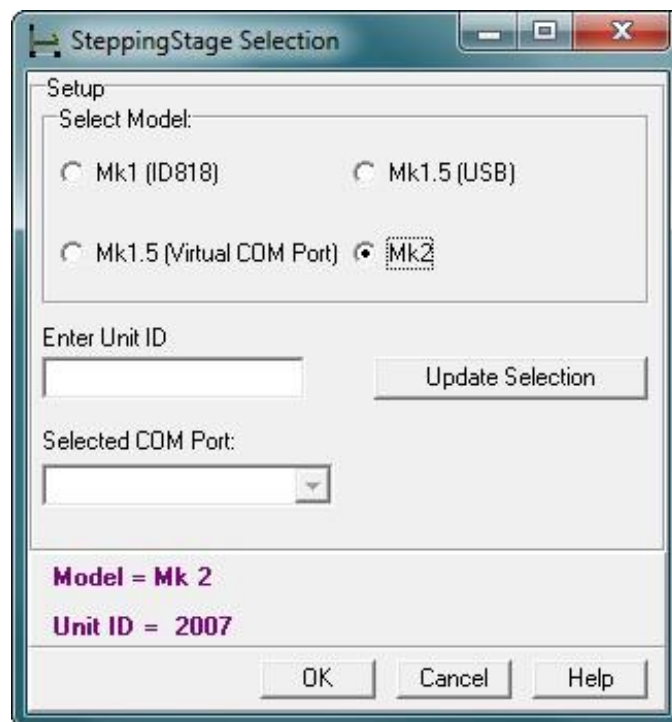
PetrogLite is now successfully installed on your machine, and can be started by clicking the icon on the desktop, or by double-clicking on C:\Program Files\PetrogLite\PetrogLite.exe (or similar, dependent on your OS and the choice of installation location you made during the installation procedure).

**STEP 12:** If you see a message indicating that your SteppingStage is not active e.g.

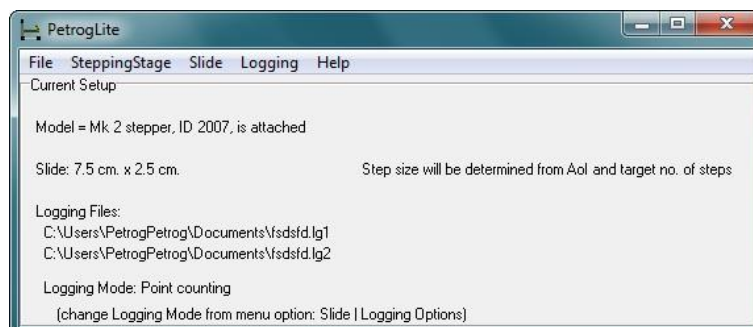




then please select menu item SteppingStage | Configure. In the SteppingStage Selection window, select the correct model (if you have a wired Mk1.5, then select Mk1.5 (USB) rather than Mk1.5 (Virtual COM Port), and if you have a wireless unit, then select Mk2). Then click OK.



You will be warned that the SteppingStage is about to move and touch its microswitches. Then you should see a message indicating that the SteppingStage is active, e.g.



You are now ready to begin using PetrogLite. Please read the manual - accessible via Help | PetrogLite Help.

### **Troubleshooting**

If there are any problems during the installation, please

- (a) make a note of the stage of the installation procedure where the error occurs, and also take some screenshots if at all possible; and
- (b) locate the install log file (the location of which is indicated in the top left-hand corner of the PetrogLite Install window).

Then send the collected notes, images and log file to [support@petrog.com](mailto:support@petrog.com).