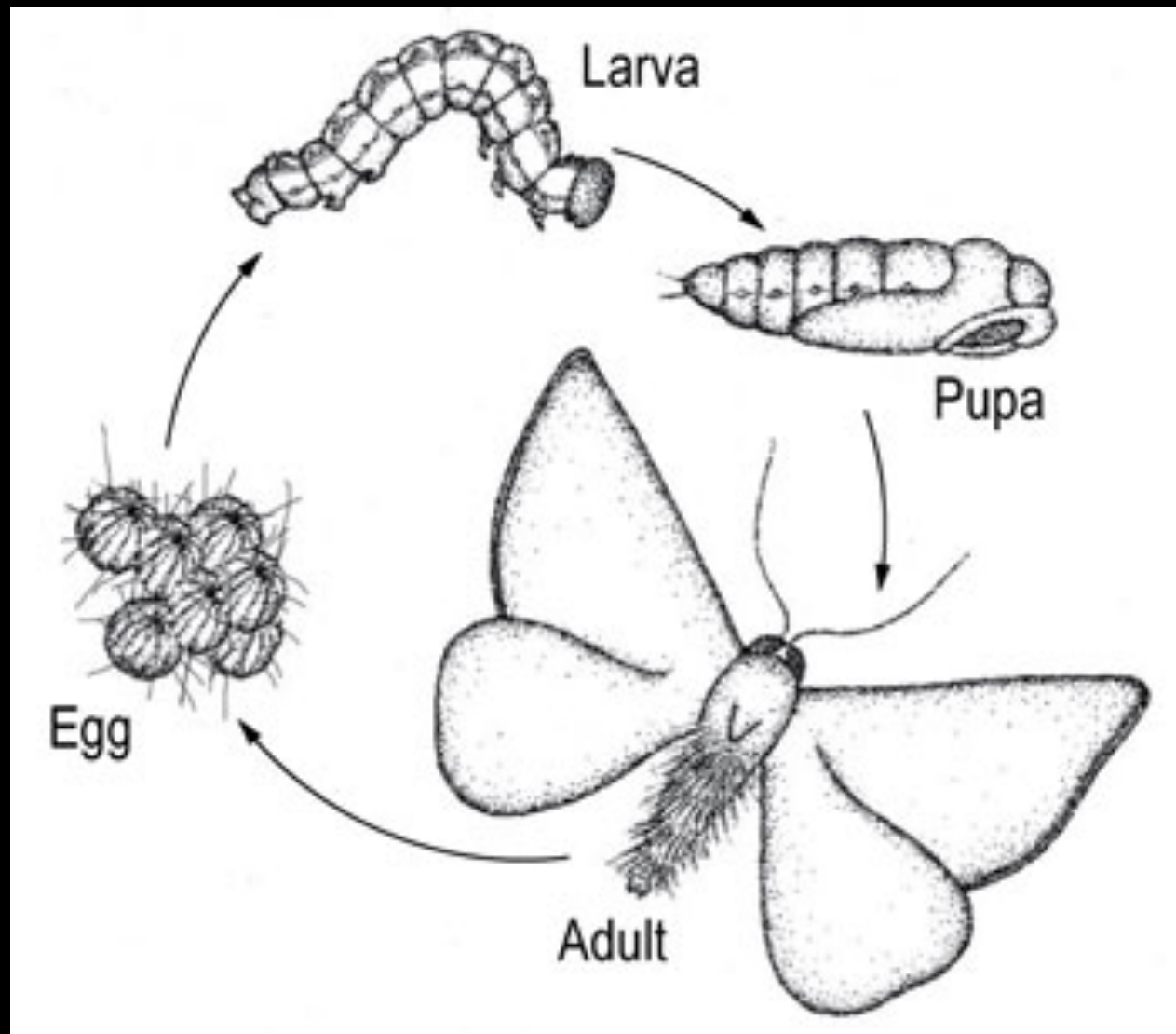




# COMPLETE METAMORPHISM

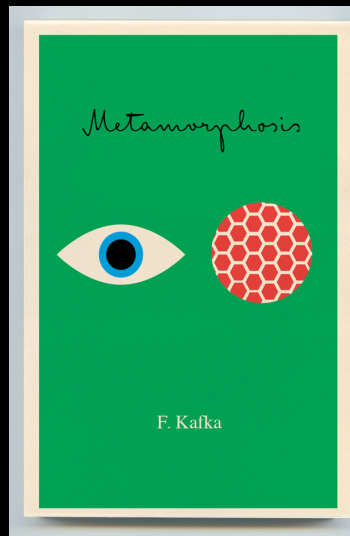
YUMENG WANG

# REFERENCE

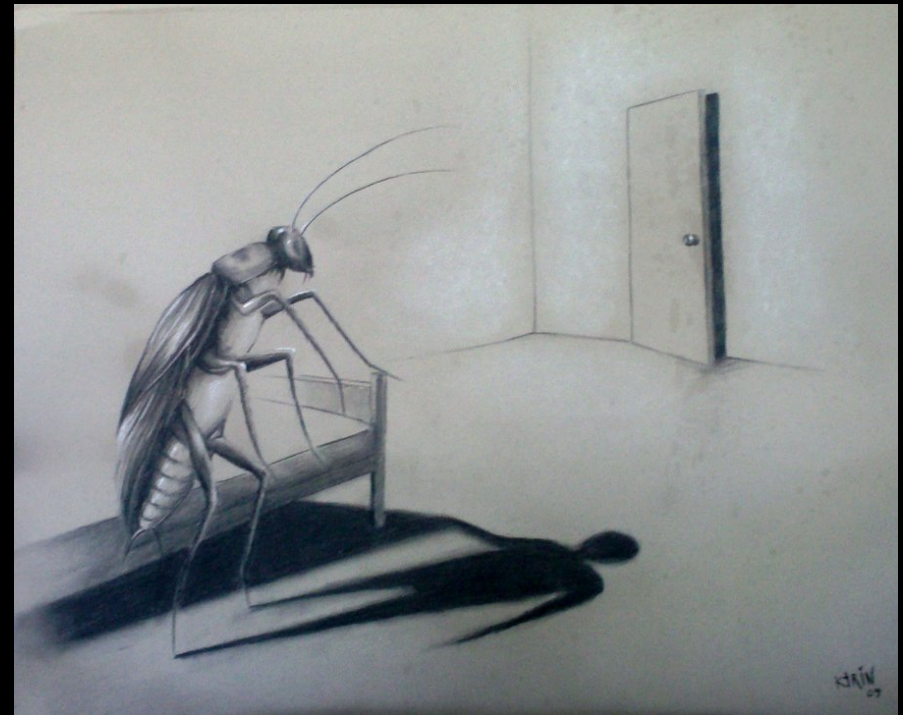
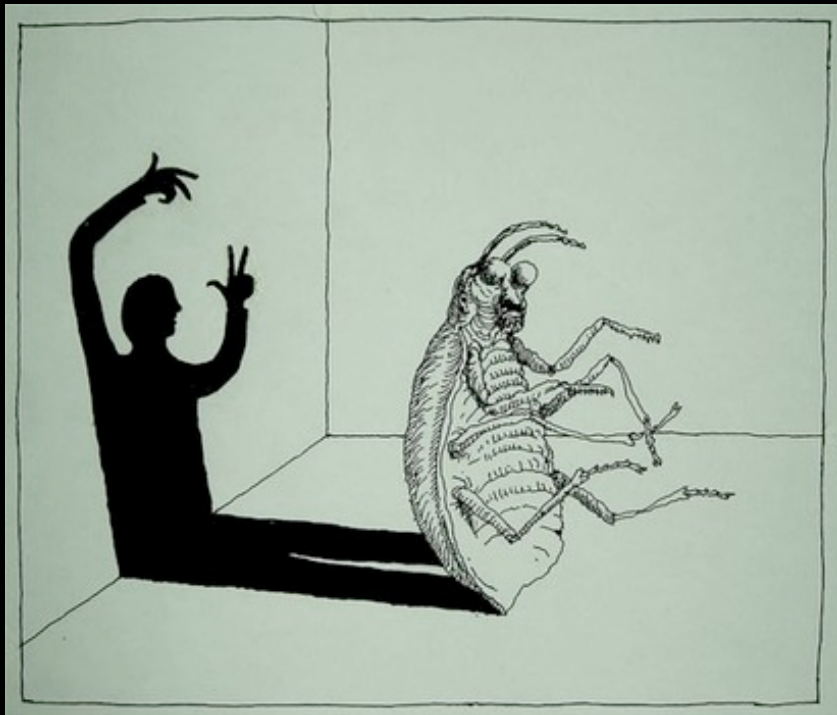


**COMPLETE METAMORPHISM**

化茧成蝶



## METAMORPHOSIS, FANZ KAFKA



**CONCEPT**

SHADOWS ARE POETIC REFLECTION OF OUR EXISTENCE IN THE SPACE. IN THIS PROJECT, SHADOWS ARE TURNED INTO SUBJECTIVE REPRESENTATIONS OF THE AUDIENCE'S MIND STATES. INSTEAD OF BEING DISTORTED BY THE SOURCE OF LIGHT, THE AUDIENCE WILL BE ABLE TO CONTROL THEIR OWN SHADOWS BY WEARING THE HEADSET THAT COLLECTS EEG DATA FROM THEIR FOREHEADS AND ACCORDINGLY FORM FAKE ANIMAL SHADOWS PROJECTED ONTO THE GROUND NEXT TO THEM.

# METHOD



**MINDWAVE  
MANAGER**



**THINKGEAR  
CONNECTOR**



**EXECUTION**



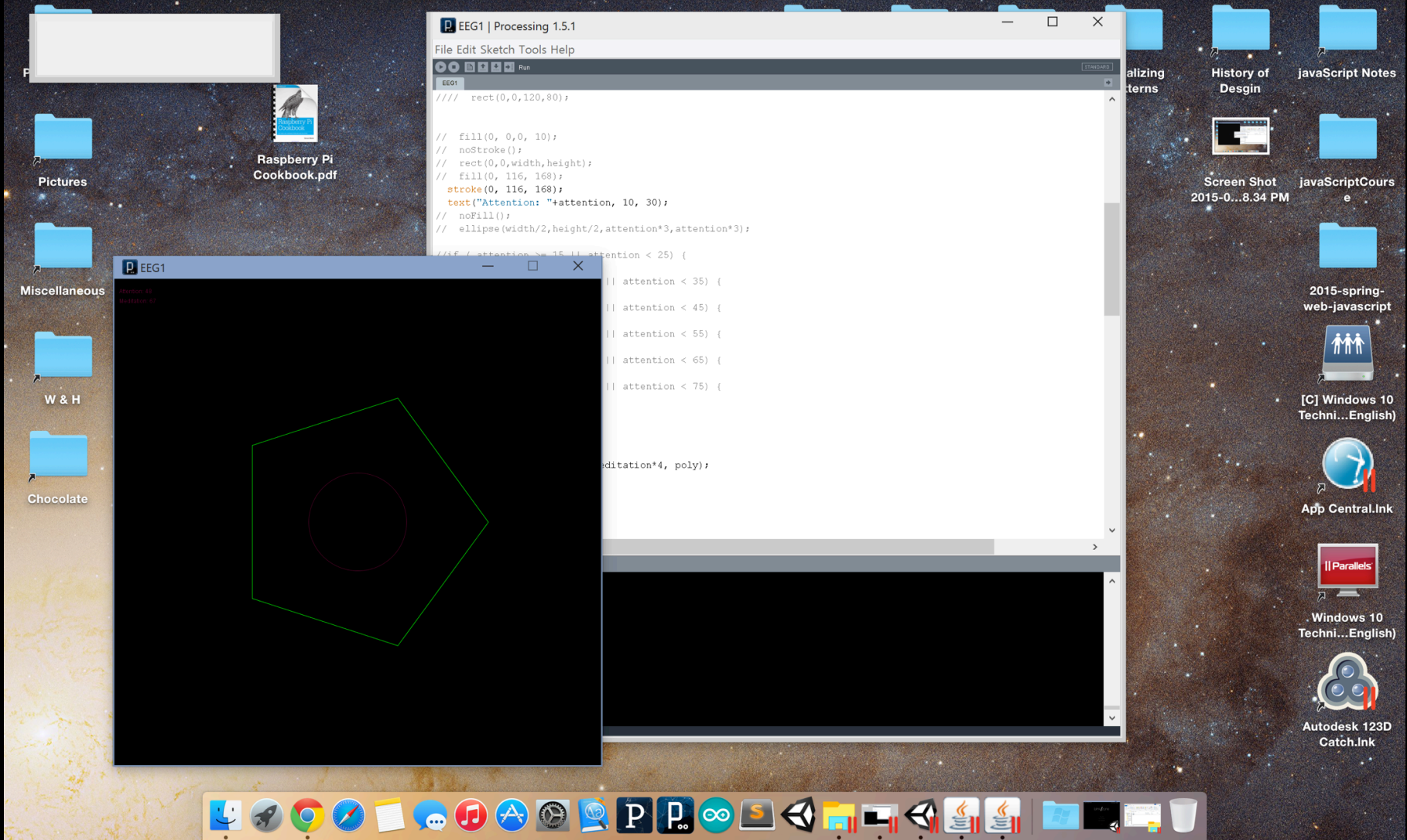
ThinkGear Connector



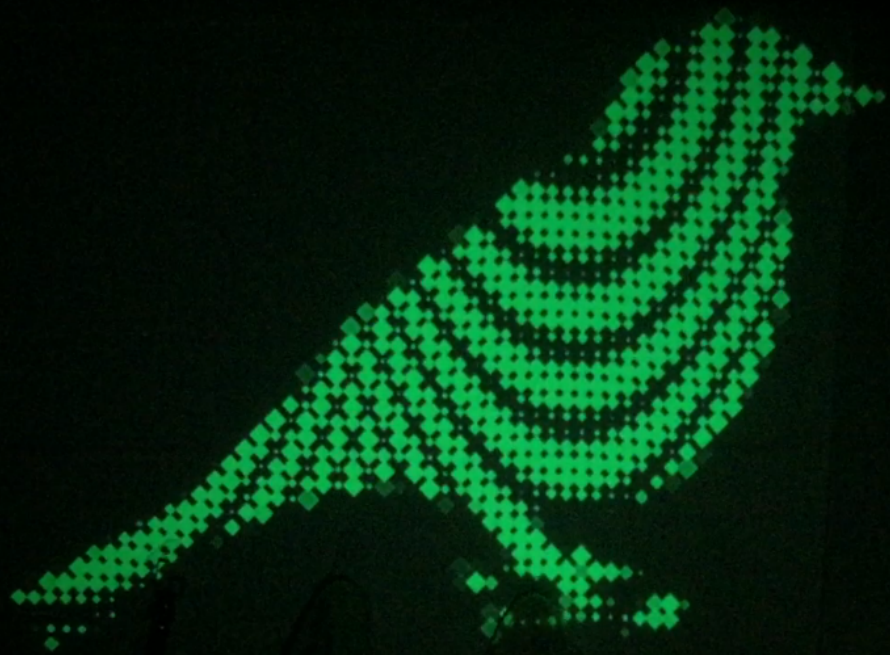
## ThinkGear Connector has stopped working

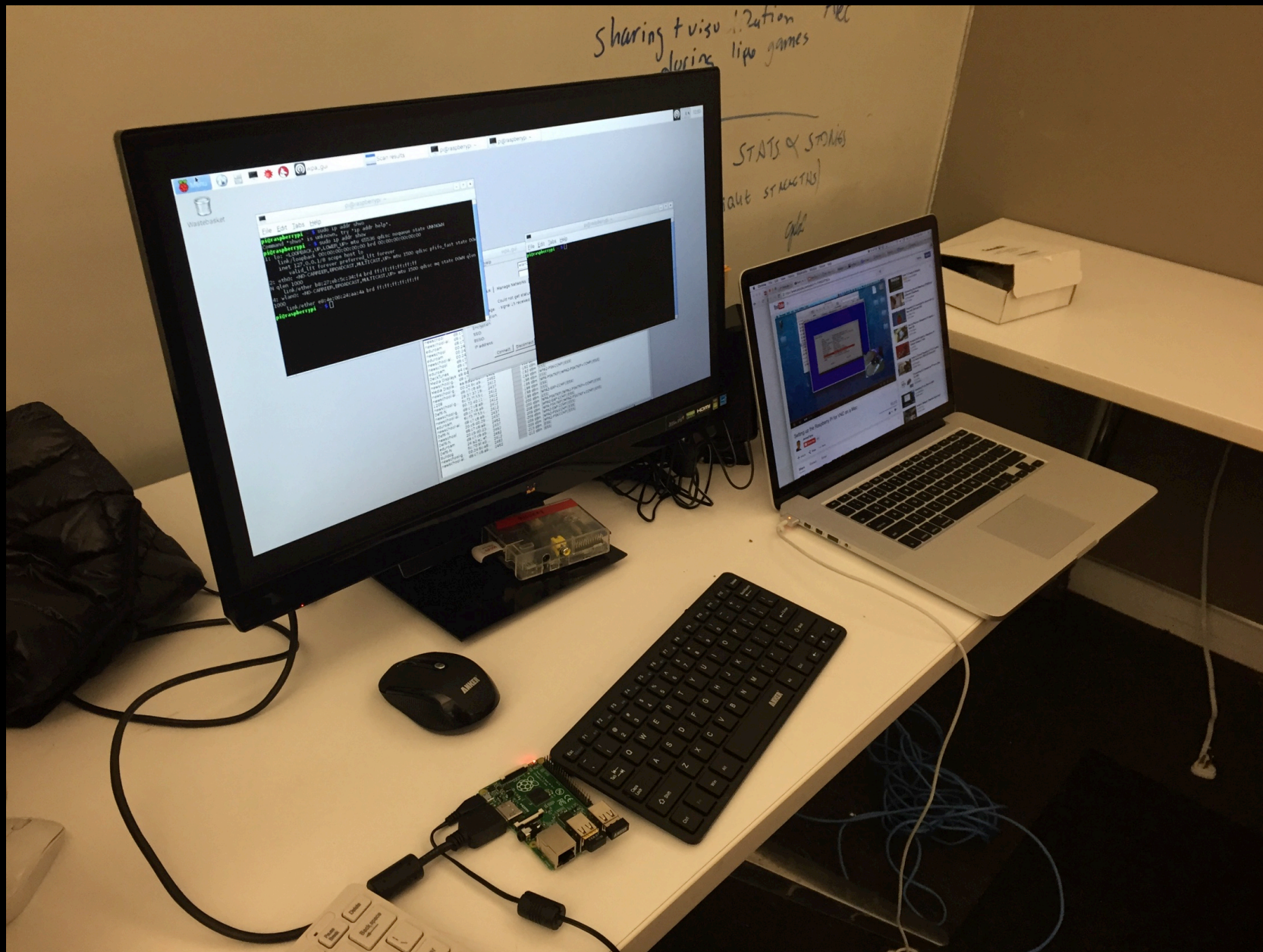
A problem caused the program to stop working correctly.  
Windows will close the program and notify you if a solution is available.

Close program









**TESTING**



**King of Testers**





**Don't destroy  
my gorgeous  
hair!**





