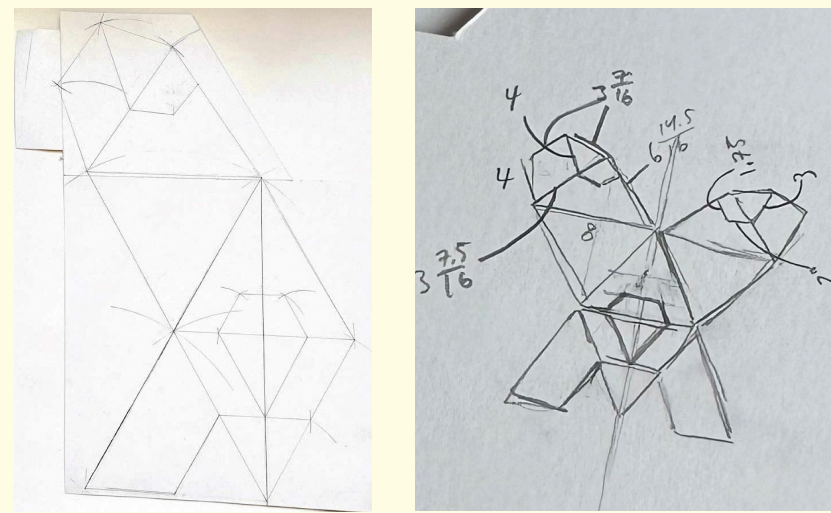
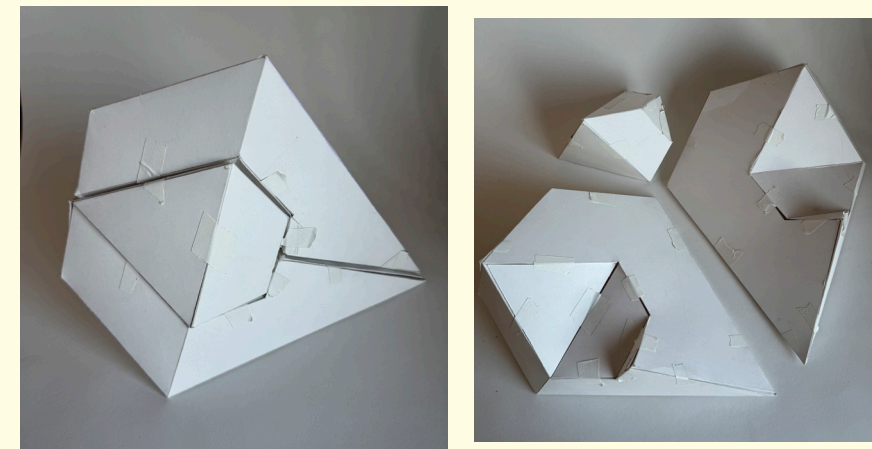


This project started with me choosing to replicate a mango through geometric forms. The forms I chose were a triangular pyramid and a triangular truncated pyramid, put together at their bases to form a mango.

### TEMPLATES



Finalized template of combined forms (LEFT), initial template sketch and measurements (RIGHT)



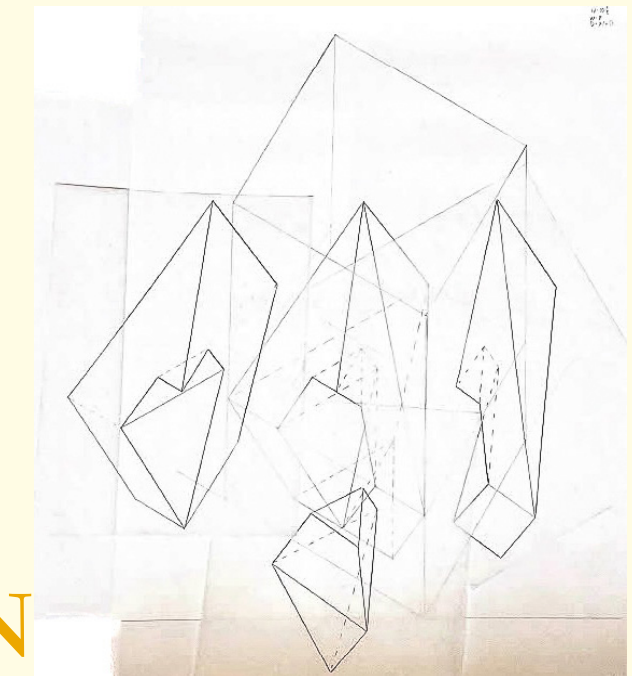
3 bristol paper forms put together (LEFT), 3 bristol paper forms separated (RIGHT)

### FINAL WORK

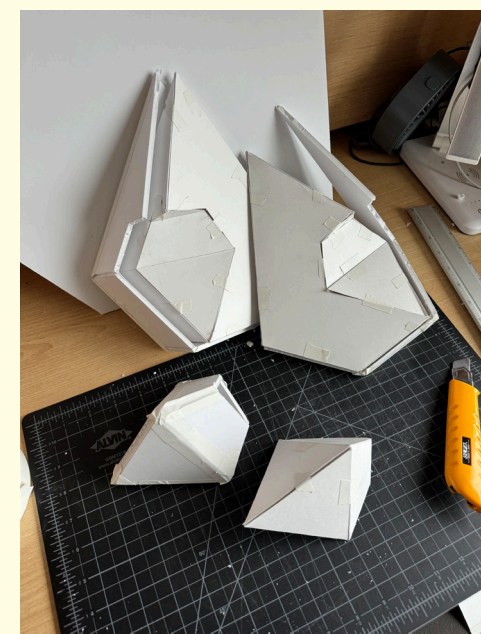


At first, this project seemed very daunting. However, over the course of the past few weeks, I found it a lot simpler than it let on. We learned about geometric qualities of the forms we were recreating, from combining and flattening them into 2D templates to scaling them down.

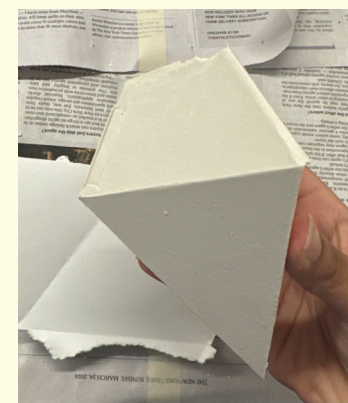
I especially found the bristol model and mold making to be the most immersive; it was a fun puzzle to figure out, especially for the complex design I chose for my forms. It was fun to keep building off of a previous deliverable and see where you ended up. Overall, though there are improvements I would make, I consider this project to be a success.



### MOLDS & CASTING



Foam core molds holding the bristol forms to show accurate measurements (LEFT), Small form casted with plaster (BELOW)



### PROBLEMS & SOLUTIONS

#### SKIN

Hand sewn yellow felt for the mango skin (RIGHT). Opening flap shown on right.

My small form cast perfectly with plaster. However, my main forms encountered problems during the casting process. First, my mold leaked multiple times. I waited for the plaster to harden a bit more before continuing to pour the plaster, nevertheless, there were still many leaks. Because of the many times I had to pause, air bubbles and pockets formed at the bottom of the mold. So, when I peeled the molds off of the plaster forms, there were holes where the plaster couldn't get to, and a lot of cracking and breaking (LEFT).

I used air dry clay to fill the holes up, which ended up being beneficial as it also provided more structure to where the small form sat between the two larger forms (RIGHT).

As for color, I dyed the plaster of the larger form yellow to replicate the mango color. Unfortunately, there wasn't enough dye to enhance the color or use it for the smaller form.

by MIRA DAS

### AXONOMETRIC PLAN

