



FALL 2024 NEWSLETTER

Established in 1984, the REC seeks to contribute to the practical solutions of pressing environmental challenges through research and engagement with the private, public, and non-profit sectors.

Meet the REC Teams

GREEN CONSULTING

The Green Consulting Team provides quality analysis and creative solutions for clients in the green/sustainable space. This year, the team is working with The Nature Conservancy to evaluate the environmental education program at The Nature Conservancy's Jack and Laura Dangermond preserve. The team is also designing an economic impact report for the Pacific Crest Trail Association to evaluate the benefit of the trail on local communities.

MANAGER



Pierce Sanderson (CMC '25)

ANALYSTS



Maya Forqus (SC '25)



Anna Carrell (CMC '28)



Jay D'Ercole (CMC '27)



Asha Luszuk (SC '28)

RENEWABLE ENERGIES

The Renewable Energies team works with clients who develop or finance renewable energy and low-carbon solutions. This semester, the team is working with Tradewater, a carbon offset developer reducing methane emissions from abandoned oil wells and refrigerants. The project focuses on multi-year carbon offset offtakes which allow for stability in cash flows for buyers and sellers, a relatively new structure in carbon markets. The team is conducting a two-part project producing a dataset with trend analysis and client-specific pitching materials.

MANAGER



Hannah Vestring (CMC '25)

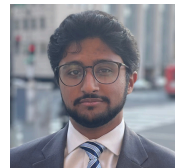
ANALYSTS



Calli O'Neal (PZ '25)



Diana Alimzhan (CMC '26)



Abhinav Ganesh (CMC '26)



Zubin Kherra (CMC '27)

POLICY AND OUTREACH

MANAGER



Talia de Beer (CMC '25)

ANALYSTS



Jiyeon Kim (CMC '26)



Aidan O'Connell (CMC '27)



Hailey Stuben (CMC '27)



Caleb Rasor (CMC '28)

The Policy and Outreach team is dedicated to addressing environmental and social policies through data-driven research. This academic year, the team is partnering with Southern California Edison to develop an actionable plan for expanding tree canopy coverage as an urban heat solution, aimed at maximizing both infrastructure resilience and community benefits in Southern California. The team is also working with Virtú Investments to explore scalable solutions for implementing solar installations in multifamily housing, addressing challenges such as limited roof space, energy demand, and tenant-owner incentive alignment.

SUSTAINABLE BUSINESS PRACTICES

MANAGERS



Annika Johnson (CMC '26)



Evelyn Mineo (PO '25)

ANALYSTS



Mia Balonick (CMC '27)



Maile Stoutemyer (CMC '27)



Caren Ensing (CMC '27)

The Sustainable Business Practices Team focuses on corporate sustainability, green innovation, and impact investment. They partner with clients driving environmental innovation in the private sector to provide research-based analyses and recommendations on sustainability issues central to clients' business models. This year, they are partnering with the startup Symbrosia to draft a white paper on investment in female-founded startups among climate and agriculture-focused venture capital funds. They are also advising the startup Kanop in their go-to-market strategy for corporate sustainability reporting data services.

MARINE SCIENCE & CONSERVATION

MANAGER



Alexa Potter (PZ '25)

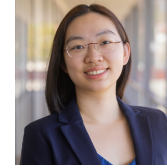
ANALYSTS



Lilly Chertock (CMC '25)



Cahal Connolly (CMC '26)



Mulan Pan (PO '27)

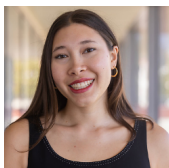


Alejandro Bedoya Norena (CMC '28)

The Marine Science and Conservation team focuses on research to advance the management and conservation of coastal and marine ecosystems. This year, they are working with The Channel Islands National Marine Sanctuary, part of NOAA Fisheries, to support current decision-making regarding their Marine Protected Areas (MPAs). The research evaluates the effectiveness of the sanctuary's MPAs in protecting highly migratory species by reviewing prior studies on the benefits of MPAs for these species, analyzing whether their critical habitats are adequately protected, and examining how MPA protection impacts these species during vulnerable life stages.

Meet the REC Interns

ECO REPS



Carol Hutchison
(CMC '26)



Ulwiana Mehta-
Malhotra (CMC '28)



Eisha Muddassir
(CMC '27)



Riley Hester
(CMC '27)



Viviana Alvarez
de la Cadena Garza
(CMC '27)



Francesca Rossi
(CMC '27)



Emily Turcios
(CMC '28)

EcoReps Interns are CMC's peer educators who increase campus environmentalism and provide sustainability education. This year the EcoReps are reviving the Beckett Garden, working on food waste awareness campaigns, conducting waste audits of campus bins to develop effective signage to streamline use, and conducting other projects to promote climate action and inform future initiatives.

ENVIRONMENTAL EDUCATION



Rachel Svoyskiy
(CMC '26)



Brooke Kasl-Godley
(SC '26)

The Environmental Education interns are updating and implementing environmental science curriculum to serve two local communities. The interns are working with three teachers at Chaparral Elementary School to provide supplemental science instruction for the sixth-grade classes. Additionally, they are collaborating with CMC's Prison Education Project to lead an environmental justice class for incarcerated adults.

Meet the REC Interns

Sustainable Food Initiative

SUSTAINABILITY REPORTING



Nitya Gupta (CMC '27)



Zoe Piccirillo (PO '25)

The Sustainability Reporting Interns focus on CMC's annual STARS submission. They work closely with various departments across campus to gather and analyze environmental data, ensuring accurate and comprehensive reporting. This collaborative effort supports the college's transparency and progress in sustainability initiatives.

SUSTAINABLE FOOD AND OUTREACH



Daisy Alvarez (SC '25)



Ivanna Morales
Mercado (CMC '25)

The Sustainable Food and Outreach Interns work to introduce new sustainability practices and systems to eating at CMC. The team is working on creating a permanent composting system on campus and designing a new system to use reusable cups at the Hub Cafe. The team is excited to support expanding the composting system and education around food waste.



FIELDWORK PROTOCOL



Natalie Owen (SC '25)

The Field Safety Protocol intern is developing guidelines to ensure that field research at CMC is accessible and safe, upholds principles of environmental stewardship, and fosters a supportive and inclusive community for all participants. Fieldwork and field research should be an enjoyable learning opportunity for all, and the goal of this Field Safety Protocol is to construct a framework of safety and inclusivity that equips all team members with the tools they need to learn to the fullest of their ability in the field.

COMMUNICATIONS



Eridaly Basave
(CMC '28)



Niamh Regan
(PZ '28)

The Communications Interns at the REC are responsible for supporting the organization's marketing and communication efforts. This involves assisting with the creation of content for various REC channels, including social media, newsletters, and other materials. Other intern responsibilities include coordinating with team members to ensure consistent messaging and maintaining communication calendars. REC Communication Interns develop skills in branding and strategic communication in a professional setting.

The food we eat has an environmental impact on land, greenhouse gases, and freshwater. To address this, the REC is hosting our inaugural Sustainable Food Initiative in 2024-2025 to create conversations among the CMC community about what we eat and how to reduce the impact of our food. This initiative is comprised of three components, all coordinated by the REC:

1. A speaker series at the Athenaeum will address advances in sustainability in the food industry.
2. Collaboration with CMC's Collins Dining Hall and Bon Appetit to run interactive events throughout the semester to engage our community with what we eat, where it is sourced, and how it is disposed.
3. Implementation of organic waste recycling at Collins Dining Hall to reduce food waste.

OVERSIGHT MANAGERS

Leadership at the REC

Co-Oversight Managers manage the internal affairs and culture of the REC. They do this through community building and open communication to ensure that everyone understands their roles and responsibilities and feels supported in the REC. This year, they are focused on integrating the new roles across the institute and strengthening alumni outreach.

"The REC has been a wonderful part of my college experience and a critical part of my leadership development. I am consistently impressed by the caliber of people and projects in the REC, and it is an honor to get to work alongside students who share a passion for the environment and climate innovation. I am grateful to contribute to fostering a culture where students are encouraged to take risks, engage in real-world learning, and feel supported within our campus community." - Camille Doherty

"Being in this position is so important to me because since my freshman year I have always looked up to the leaders within the REC as role models pre-professionally, academically, and personally. I've spent the past few months trying to be that figure for all of the fantastic managers, analysts, and interns at the REC. For me, leadership is a two-way street, it is not only how I can best support my peers, but what I can learn from them to be the strongest Co-Oversight Manager possible." - Carolina Auerbach



Carolina Auerbach
CMC '25



Camille Doherty
CMC '25

REC 40th Anniversary

On November 1, 2024, the Roberts Environmental Center celebrated its 40th anniversary, marking four decades of dedication to fostering environmental leadership across the Claremont Colleges. Over the years, the REC has grown significantly, continuing to provide students with invaluable resources and connections.

The celebration was held in Claremont McKenna's Athenaeum, where alumni, current students, faculty, and friends of the REC gathered to learn more about REC student projects. Students who participated in the Summer Fellows program presented their research and reflected on the insights gained from their experiences. In addition to honoring student accomplishments, the event offered a glimpse into the REC's future. Last year, the REC introduced six new intern positions, further expanding opportunities for Claremont students to work on real-world environmental issues.

These developments reflect the REC's mission to empower students to address environmental challenges through research, collaboration, and partnerships with organizations. Branwen Williams, now in her second year as the Director of the REC, has seen first-hand how the institute has contributed to environmental leadership at the Claremont Colleges.

"The REC bridges environmental stewardship, economic feasibility, and social equity"



"Established in 1984 by President Jack Stark and alumnus George R. Roberts, the Roberts Environmental Center has been a cornerstone of environmental research and education at CMC for 40 years. Its founding demonstrated CMC's visionary foresight in creating an institute dedicated to exploring and addressing environmental challenges. Today, the REC is a hub for environmental research and programming. Open to students from all 5C campuses, the REC fosters collaboration among individuals from diverse backgrounds and academic stages, empowering them to tackle critical issues with innovative solutions. Committed to shaping a cleaner, safer, and more sustainable future, the REC bridges environmental stewardship, economic feasibility, and social equity" - Dr. Branwen Williams



Board Member Spotlight

Sedina Banks: CMC '00

Sedina Banks graduated from CMC in 2000 with a major in Environment, Economics and Politics (EEP). During her time at CMC, she had the pleasure of spending a summer at the Eastern Sierra Research Station and received a REC Summer Fellowship to spend a summer in Alaska. She is currently a partner at Greenberg Glusker's Environmental Group, specializing in regulatory compliance and environmental litigation. She joined the REC Advisory Board in 2022.



**Greenberg
Glusker**

Save the Date! February 28th, 2025



Join us for the Green Careers Conference, featuring alums in the green industry. Panel sessions will highlight the opportunities and experiences across sectors, including environmental law, policy, tech, finance, media, and more.

*Please reach out to Carolina Auerbach if you are interested in attending: cauerbach25@cmc.edu