

What is an urban forest?

An urban forest is a forest or a collection of trees that grow within a city, town, or a suburb.

Benefits

- Offset air pollution
- Mitigate the “heat island” effect
- Save energy by providing shade
- Increase property value
- Reduce surface runoff

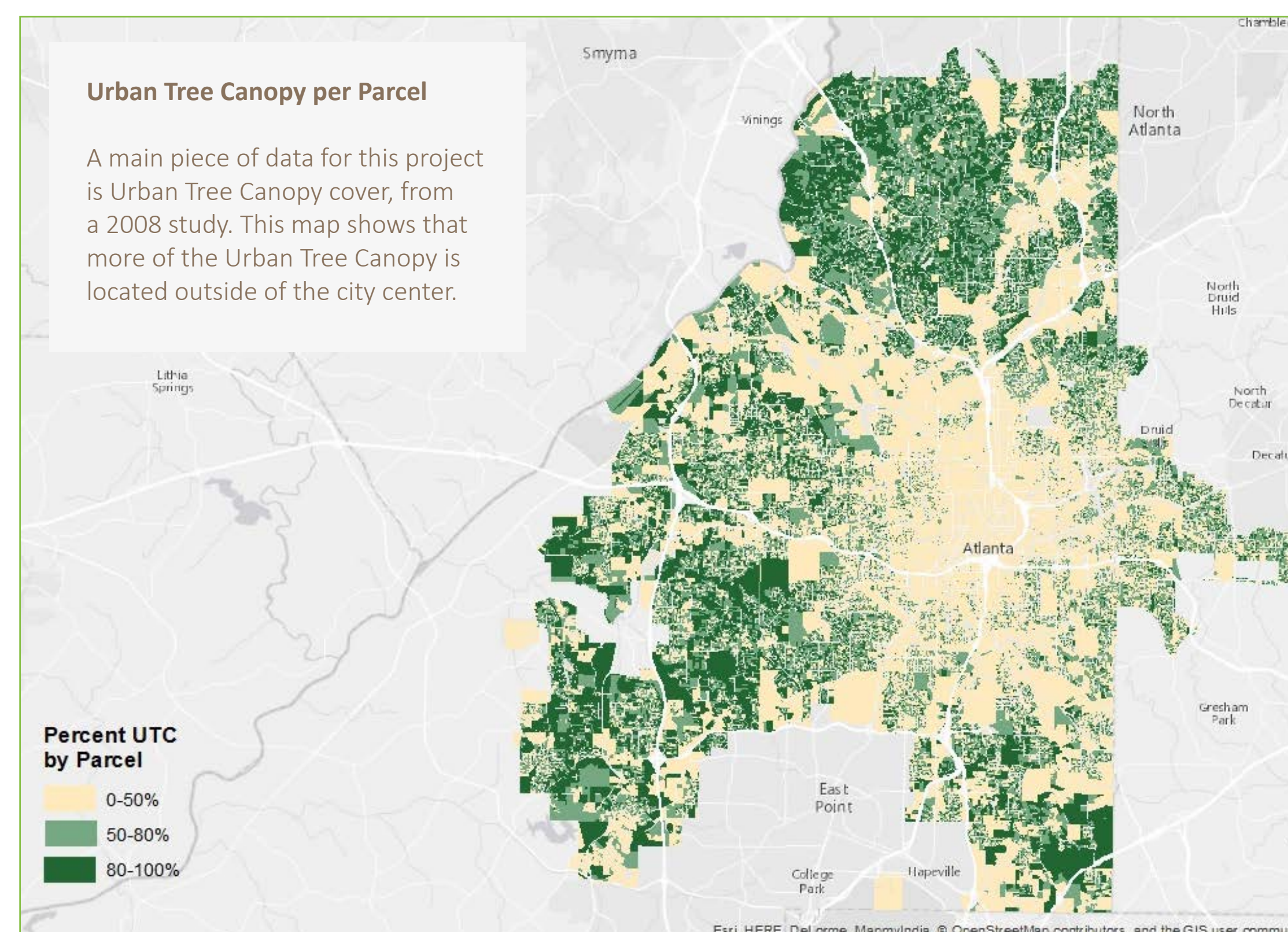
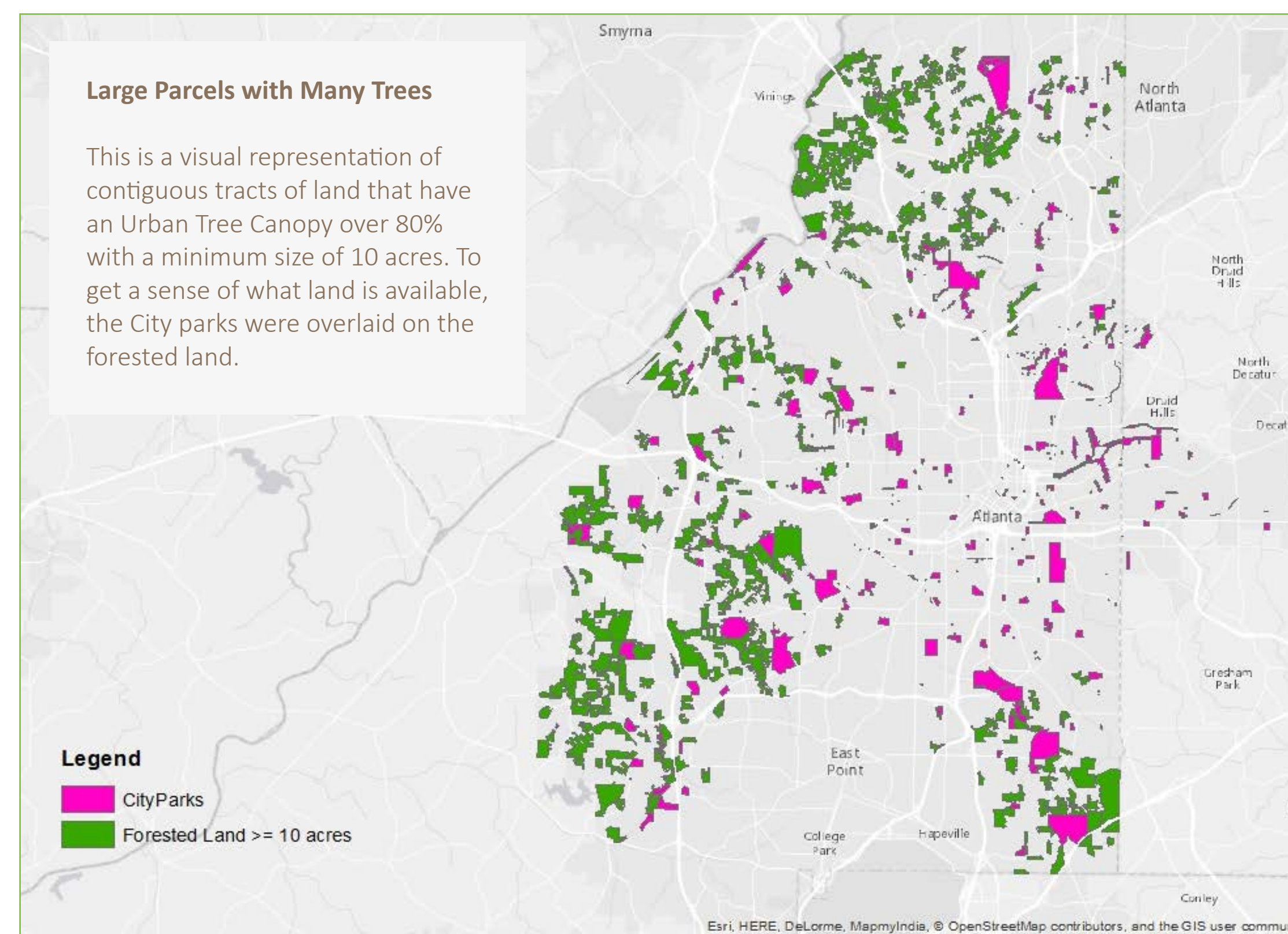
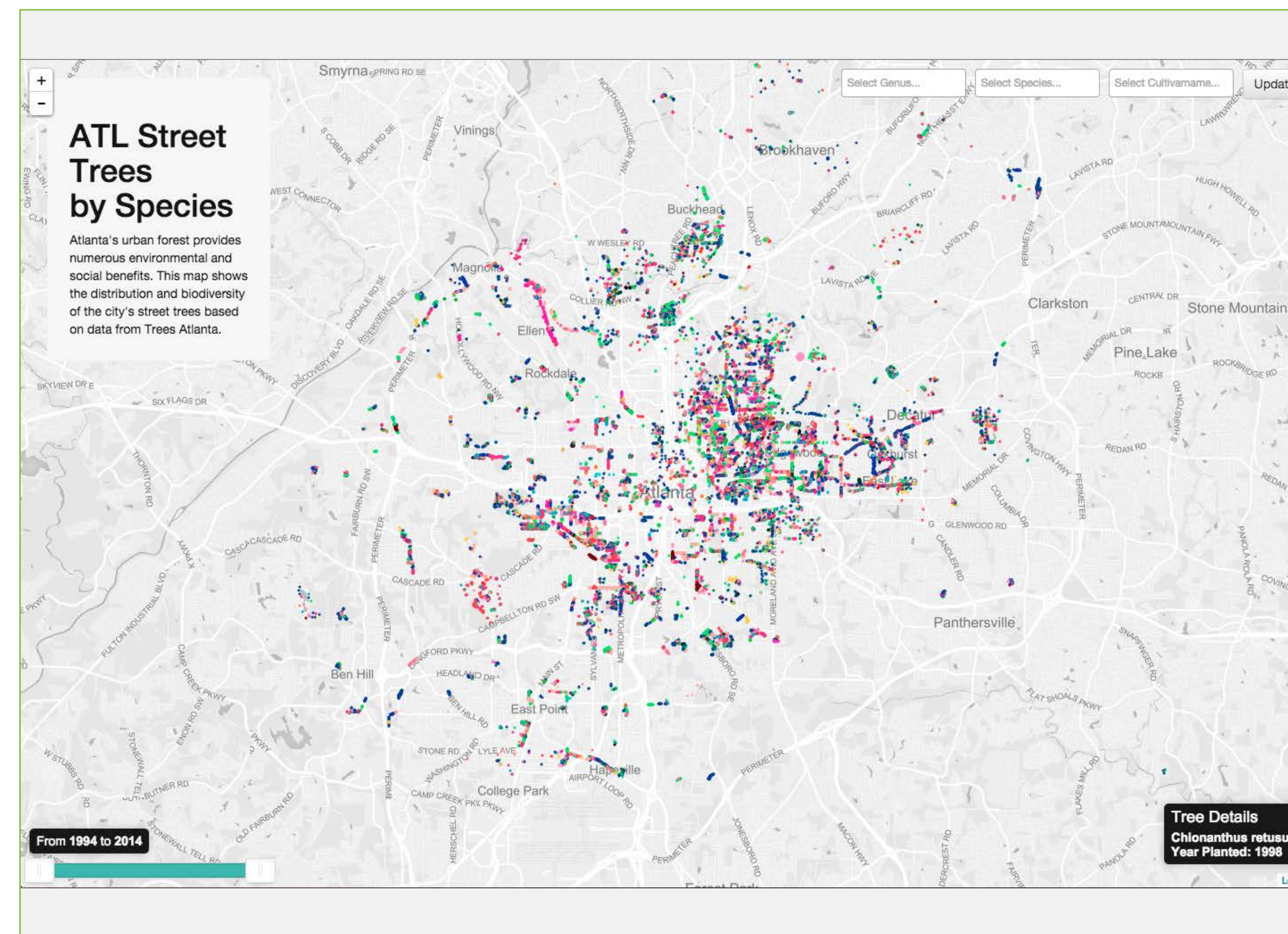
How can the City of Atlanta and Trees Atlanta use data to maintain the urban forest, primarily through purchasing land and finding new planting locations?

How can data assist policymakers in making well-informed decisions about Atlanta’s urban forest?

Current and accurate data is rare, so how can the existing data be optimally used?

Data

- Urban Tree Canopy (UTC) study (2008)
- Trees Atlanta Inventory (2014)
- City of Atlanta Tree Inventory
- City of Atlanta Parcels (2012)
- City of Atlanta Impervious Surfaces
- City of Atlanta Parks
- NHS Streams and Waterbodies



Distribution of Trees by Species

It’s important for an urban forest to have a diversity of trees to withstand different diseases. Two interactive visualizations will help arborists identify the biodiversity of Atlanta’s urban forest in greater detail.

Identifying tracts of forest within a city

Atlanta is at risk of losing its wooded areas due to development. An interactive application will enable the Atlanta Tree Commission to identify contiguous forest tracts and areas with certain qualities, like cost and proximity to parks.

Prioritization of potential planting sites

Finding ideal planting locations can be challenging in a large city. An interactive application using relevant data, like water features and impervious surfaces, will prioritize planting sites by land parcels. Arborists can use this tool to find new planting sites.



TREES ATLANTA

Contact information:
Jordan Belknap: jbelknap3@gatech.edu
Caroline Foster: cfoster2@gatech.edu
Sanat Moningi: smoningi3@gatech.edu