

Molecular cloning and characterization of crustacean type-one dopamine receptors: $D_{1\alpha\text{Pan}}$ and $D_{1\beta\text{Pan}}$

Merry C. Clark, Deborah J. Baro*

Program for Cell and Molecular Biology and Physiology, Department of Biology, Georgia State University, P.O. Box 4010, Atlanta, Georgia 30303, USA

Received 1 September 2005; received in revised form 17 November 2005; accepted 19 November 2005
Available online 19 January 2006

Abstract

Dopamine (DA) differentially modulates identified neurons in the crustacean stomatogastric nervous system (STNS). While the electrophysiological actions of DA have been well characterized, little is known about the dopaminergic transduction cascades operating in this system. As a first step toward illuminating the molecular underpinnings of dopaminergic signal transduction in the crustacean STNS, we have cloned and characterized two type-one DA receptors (DARs) from the spiny lobster (*Panulirus interruptus*): $D_{1\alpha\text{Pan}}$ and $D_{1\beta\text{Pan}}$. We found that the structure and function of these arthropod DARs are well conserved across species. Using a heterologous expression system, we determined that DA, but not serotonin, octopamine, tyramine or histamine activates these receptors. When stably expressed in HEK cells, the $D_{1\alpha\text{Pan}}$ receptor couples with Gs, and DA elicits an increase in [cAMP]. The $D_{1\beta\text{Pan}}$ receptor responds to DA with a net increase in [cAMP] that is mediated by Gs and Gz.

© 2005 Elsevier Inc. All rights reserved.

Keywords: Central pattern generator; STG; Signal transduction; cAMP; Neuron; Invertebrate; Neuromodulation; G protein coupled receptor

1. Introduction

Monoamines have a variety of physiological and behavioral effects in arthropods (Tierney et al., 2004; Strawn et al., 2000; Cooper and Neckameyer, 1999). The role of neuromodulation in fashioning multiple outputs from a single circuit has long been appreciated. In this regard, important insights have been realized from studies on the STNS in Decapod crustaceans (Hooper and DiCaprio, 2004; Nusbaum and Beenhakker, 2002). Peptidergic and monoaminergic modulation of STNS circuits have been studied extensively at the anatomical and electrophysiological levels (Beltz, 1999; Harris-Warrick et al., 1992; Nusbaum, 2002). DA is known to alter both synaptic and intrinsic properties of stomatogastric neurons in a cell specific manner (Bucher et al., 2003; Cleland and Selverston, 1997; Harris-Warrick et al., 1998; Johnson et al., 2003a; Kloppenburg et al., 1999; Peck et al., 2001); however, little is known about the signal transduction cascades that generate these physiological responses.

Dopaminergic responses are mediated through multiple DARs that comprise an evolutionarily conserved family of G protein coupled receptors (GPCRs). DARs are thought to have evolved initially from gene duplication and drift leading to 2 related paralogous genes defining two different subfamilies: D_1 and D_2 (Callier et al., 2003; Kapsimali et al., 2003; Le Crom et al., 2003). To date, all DARs can be broadly classified into these two subfamilies on the basis of conserved structure and signaling mechanisms. In general, type 1 DARs preferentially couple to Gs to increase adenylyl cyclase activity while type 2 receptors preferentially couple with Gi/o to decrease adenylyl cyclase activity (Neve et al., 2004). Pharmacology is also used to classify vertebrate DARs. Pharmacological profiles are not conserved across vertebrate/invertebrate lines, however, so vertebrate pharmacology cannot be used when classifying arthropod receptors as D_1 vs. D_2 .

The natural history of D_1 receptors has been well studied for vertebrates, but much less is known for vertebrate D_2 receptors. In addition, the orthologous relationships for vertebrate and invertebrate DARs are unknown (Kapsimali et al., 2003). Seven DAR subtypes exist in the phylum chordata: four D_1 subtypes (D_1/D_{1A} , D_{1B}/D_5 , D_{1C} , D_{1D}) and three D_2 subtypes (D_2 , D_3 , D_4). A given class (e.g., mammal, teleost, reptile, etc.) may possess

* Corresponding author. Tel.: +1 404 651 3107; fax: +1 404 651 2509.
E-mail address: dbaro@gsu.edu (D.J. Baro).

only a subset of the seven. For example, only five DAR subtypes are represented in mammals: D₁/D_{1A}, D_{1B}/D₅, D₂, D₃, D₄. There are three well-characterized DARs in the phylum arthropoda (Blenau et al., 1998; Feng et al., 1996; Gotzes et al., 1994; Han et al., 1996; Hearn et al., 2002; Sugamori et al., 1995). Two of these receptors can be classified as type 1, and one of these receptors can be classified as type 2. A fourth arthropod receptor that responds to DA with a slight, but significant increase in cAMP has recently been cloned (Srivastava et al., 2005). This receptor also responds strongly to ecdysteroids, and further characterization is necessary to determine if this receptor should be classified as belonging to the DAR family.

As a first step toward defining the dopaminergic transduction cascades operating in the STNS, we have cloned and characterized the two known arthropod type 1 receptors from the spiny lobster, *Panulirus interruptus*: D_{1αPan} and D_{1βPan}. In the work presented here, we define the G protein and second messenger couplings for each receptor, and examine which monoamines activate these receptors.

2. Materials and methods

2.1. Cloning and expression in a heterologous system

The three lobster DARs were cloned from nervous tissue of spiny lobster *P. interruptus* using a degenerate PCR strategy with conventional library screening and RACE technology as previously described (Clark et al., 2004). Full length constructs were created and inserted into a pIRESneo3 vector (B.D. Biosciences Clontech, Palo Alto, CA, USA) using standard recombinant techniques. Constructs were stably expressed in HEK cells using methods previously described (Clark et al., 2004). The data have been submitted to GenBank under accession numbers DQ295790 (D_{1αPan}) and DQ295791 (D_{1βPan}).

2.2. Membrane preparations

Stably transfected cells were harvested with trypsin (ATCC, Manassas, VA, USA) or cell stripper (Media Tech, Herndon, VA, USA). Pellets were homogenized in 20 mM HEPES (pH 7.4) containing 2 mM MgCl₂, 1 mM EDTA, 2 mM 1,4-dithiothreitol (DTT), 1 μg/mL leupeptin, 1 μg/mL aprotinin, and 2 mM PMSF. The homogenate was centrifuged at 1000 ×g for 5 min. The supernatant was recovered and centrifuged at 20,000 ×g for 30 min at 4 °C. Pellets were resuspended in 20 mM HEPES (pH 7.4) containing 0.5% 3-[(3 cholamidopropyl) dimethylammonio]-1-propanesulfonate (CHAPS), and 2 mM EDTA. For some experiments, samples were stored at –70 °C until assayed. Protein concentrations in each sample were determined using a BCA Protein Assay Kit (Pierce).

2.3. G protein activation assay

Agonist-induced activation of specific G proteins was determined using an assay based on a well-established, previously described protocol (Zhou and Murthy, 2004). In

these experiments, individual wells of a 96-well break-apart plate (Fisher Scientific) were UV sterilized in a tissue culture hood for 15 min. At this point, wells were denoted either as blanks or coated. Coated wells received an antibody against one human G α subunit [EMD/Calbiochem catalog #371778 (G₁₂ α), #371723 (G_{i1/2} α), #371751 (G_q α), #371726 (G_{i3/o} α), #371732 (G_s α), or #371741 (G_z α)]. Antibodies were diluted to a concentration of 20 μg/mL in sterile phosphate-buffered saline, and 50 μL were aliquoted to separate wells. Plates were incubated on ice. After 2 h, the liquid was removed from the coated wells. Both coated and blank wells were then completely filled with blocking solution (3% BSA, 0.06% sodium azide in phosphate-buffered saline) and incubated on ice for 2 h. During this time, reactions were performed as follows. Membrane preparations from cell lines (1.5 μg/μL of protein) were incubated at 37 °C for 15 min in 10 mM HEPES (pH 7.4) containing 10 mM MgCl₂, 100 μM EDTA and 10 nM GTP γ ³⁵S (Amersham) with or without DA. Reactions were terminated with ten volumes of termination buffer [10 mM MgCl₂, 100 μM GDP, 200 mM NaCl in 100 mM Tris (pH 8.0)]. Fifty microliters of each terminated sample were then aliquoted in triplicate to both coated wells and blank wells (i.e., there are a total of six wells for each sample when measuring the activity of one G protein, nine wells for each sample when measuring the activity of two different G proteins, etc.). Plates were incubated on ice for 2 h. Wells were then rinsed three times with phosphate-buffered saline containing 0.3% Tween-20. Individual wells were placed in scintillation vials containing ScintiSafe Econo 1 (Fisher) and the radioactivity in each well was quantified with a scintillation counter. Resulting cpm from the blank wells were averaged and used as a measure of non-specific binding. The nonspecific binding was subtracted from the average cpm obtained from the coated wells. Data are expressed as cpm/μg of protein.

2.4. cAMP assays

cAMP levels were measured as previously described (Clark et al., 2004). Briefly, 1 × 10⁵ cells were plated in 35 mm dishes and grown to confluence. Cells were washed with 1 mL of medium and preincubated at 37 °C for 10 min in the presence of the phosphodiesterase inhibitor 3-isobutyl-1-methylxanthine (2.5 mM) (Sigma). In some cases, cells were incubated an additional 30 min at 37 °C with or without forskolin (2.5 μM), and varying concentrations of DA. In some experiments, cells were pretreated for 24 h with pertussis toxin (PTX, Calbiochem) or 15 min with 1-*O*-Octadecyl-2-*O*-methyl-*rac*-glycero-3-phosphorylcholine (Et-18-OCH₃, Calbiochem). The medium was removed and 0.5 mL of 0.1 M HCl (Sigma) with 0.8% Triton X-100 (Sigma) was added to the plates. After a 30 min incubation at room temperature, the lysate was removed from the plates and centrifuged for 2 min. The supernatant was collected and assayed for cAMP levels using a direct cAMP enzyme immunoassay kit (Assay Designs, Inc.) according to the manufacturer's instructions. Protein concentrations in each sample were determined using a BCA Protein Assay Kit (Pierce). Data are expressed as picomoles of cAMP/milligram of protein.

2.5. Statistical analyses and curve fitting

Student *t*-tests were performed with Excel software. Curve fitting and Kruskal–Wallis (ANOVA on ranks) tests were performed with Prism (GraphPad Software, San Diego, CA, USA, www.graphpad.com). In all cases, statistical significance was determined as $p < 0.05$.

3. Results

3.1. The family of dopamine receptors is conserved across different classes of arthropods

To begin to elucidate the dopaminergic systems in the STNS, we cloned the two known arthropod type-one DARs from *P. interruptus*: D_{1α}Pan and D_{1β}Pan. The D_{1α}Pan receptor is orthologous to the *Drosophila* receptor DAMB/DopR99B (Feng et al., 1996; Han et al., 1996) and the D_{1β}Pan receptor is orthologous to the *Drosophila* receptor Dmdop1/dDA1 (Blenau et al., 1998; Gotzes et al., 1994; Sugamori et al., 1995). Fig. 1 illustrates that orthologs show high homology. Paired alignments of spiny lobster and *Drosophila* D_{1α} and D_{1β} orthologs revealed 44% and 37% amino acid identity over the entire protein, respectively. Most differences across species occur in

the amino and carboxy termini and intracellular loop 3, which is typical for GPCRs (Clark et al., 2004; Sosa et al., 2004). Indeed, the idea of divergent termini is emphasized by the fact that the gene for the D_{1β} receptor is alternately spliced to produce two proteins with different amino termini, D_{1β.1}Pan and D_{1β.2}Pan (Table 1; Fig. 1). Interestingly, and contrary to the idea that the carboxy termini often diverge, both D_{1β}Pan orthologs end in a conserved PDZ domain. However, we have not performed an exhaustive search for alternate splice forms, and it is possible that there are additional alternately spliced exons for both D_{1α}Pan and D_{1β}Pan receptors.

3.2. D_{1α}Pan couples with Gs in HEK cells to produce an increase in [cAMP]_i

We next characterized receptor couplings in a heterologous expression system. When bound by ligand, activated DARs function as guanine nucleotide exchange factors (GEFs), causing inactive heterotrimeric G proteins to exchange GDP for GTP. The trimeric G protein then dissociates into Gα and Gβγ subunits, each of which interacts with downstream effectors (Cabrera-Vera et al., 2003). Since vertebrate and insect D₁ receptors preferentially couple with Gs to stimulate adenylyl cyclase and increase cAMP levels (Feng et al., 1996;

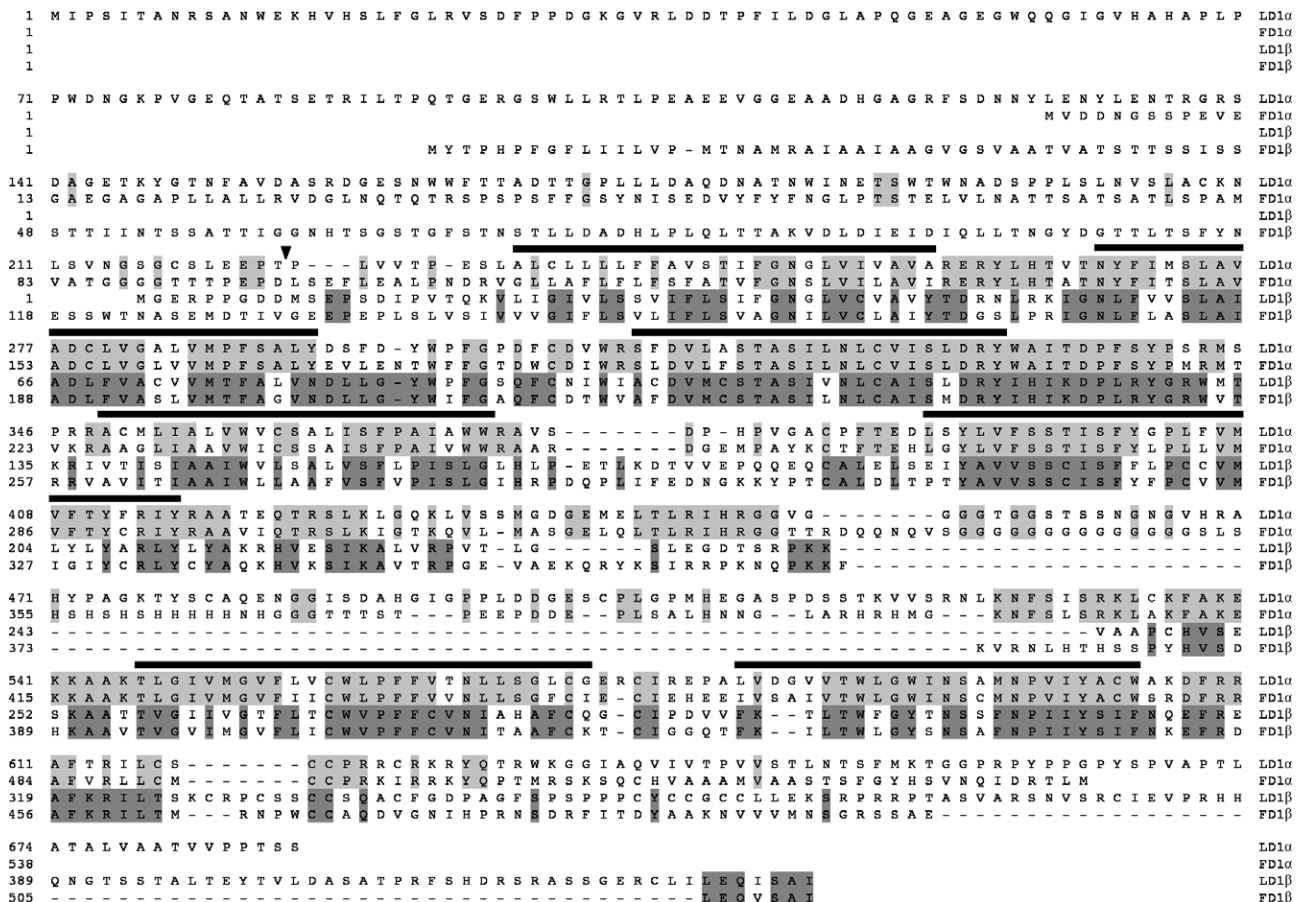


Fig. 1. The DAR family is conserved across arthropods. The *Panulirus* (L) and *Drosophila* (F) DAR orthologs are aligned. Amino acids that are identical in fly and lobster orthologs are highlighted for each pair of DARs. Black bars approximate the seven transmembrane regions. The point of alternate splicing on lobster D_{1β}Pan is indicated by a black arrowhead. The accession numbers are as follows: LD_{1α}Pan, DQ295790; FD_{1α}Pan, U34383; LD_{1β.1}Pan, DQ295791; FD_{1β}Pan, X77234.1.

Table 1
Alternate splicing of $D_{1\beta Pan}$

Location	Isoform	Exon configuration	Amino acid sequence ^a
N-terminus	$D_{1\beta.1Pan}$	$D_{1\beta}$ N-terminal exon 1	MGERPPGDDMSepsdi...
	$D_{1\beta.2Pan}$	$D_{1\beta}$ N-terminal exon 2	MKTVIESSAMTNITDDQepsdi...

^a Capital letters represent alternately spliced exons, lower case letters represent amino acids present in all isoforms examined.

Han et al., 1996; Neve et al., 2004), we predicted that the $D_{1\alpha Pan}$ receptor should do likewise. To test this prediction, full-length $D_{1\alpha Pan}$ constructs were assembled using standard recombinant techniques. The constructs were then stably expressed in HEK cells, and the resulting cell line, HEK $D_{1\alpha Pan}$, was assayed for changes in G protein activity and cAMP levels.

We first developed and performed a “G protein activation assay” based on minor modifications to a previously described protocol (Zhou and Murthy, 2004). In this assay, the wells of a break-apart 96-well plate are pre-coated with commercially available antibodies against the various human G proteins. Membrane fractions of a human cell line stably expressing a lobster receptor are prepared and incubated with or without DA in a solution containing $GTP\gamma^{35}S$, a labeled, nonhydrolyzable form of GTP. Activated DARs cause coupled G proteins to exchange GDP for $GTP\gamma^{35}S$. The reactions are terminated and dispensed into the pre-coated wells. After two hours the wells are washed to remove material that is not recognized by the anti-G protein antibody, and the bound radioactivity is quantified with a scintillation counter. The cpm associated with each antibody-coated well are a measure of the activation of the corresponding G protein. Fig. 2 illustrates that $D_{1\alpha Pan}$ couples exclusively with G_{α_s} . Exposure to 10^{-5} M DA for 15 min induced a ~4-fold increase in G_{α_s} activity ($p < 0.3$), but did not significantly increase the activity of any of the other G proteins examined (G_{α_q} , $G_{\alpha_{11}}$, $G_{\alpha_{12}}$, $G_{\alpha_{13}}$, G_{α_o} , G_{α_z} , $G_{\alpha_{12}}$).

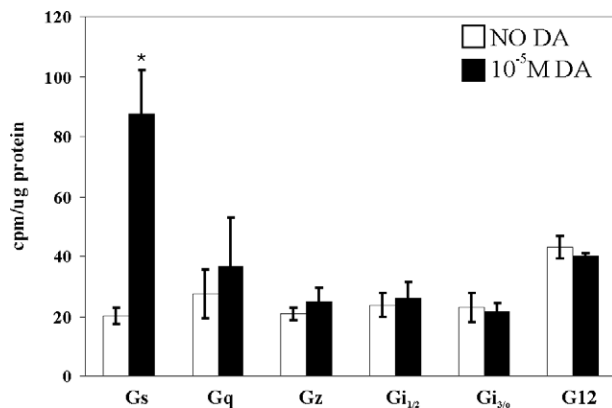


Fig. 2. The $D_{1\alpha Pan}$ receptor couples with G_s . G protein activities in HEK $D_{1\alpha Pan}$ membrane preparations were measured in the absence (open bar) vs. the presence (filled bar) of 10^{-5} M DA for eight G proteins: G_s , G_q , G_z , G_{i1} , G_{i2} , G_{i3} , G_o , G_{12} . Data represent the mean \pm S.E.M., $n = 3$. Statistically significant differences in the activity of a given G protein are indicated with an asterisk ($p < 0.05$).

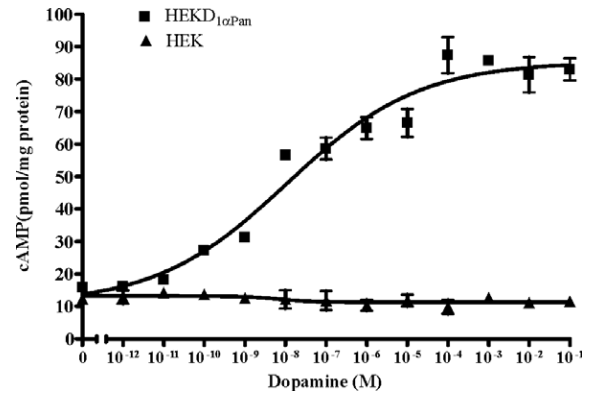


Fig. 3. DA activation of the $D_{1\alpha Pan}$ receptor increases [cAMP]. The $D_{1\alpha Pan}$ receptor couples positively with cAMP. Changes in cAMP levels in response to increasing [DA] were measured in a stably transfected cell line expressing the $D_{1\alpha Pan}$ receptor, HEK $D_{1\alpha Pan}$ (filled squares) and in the nontransfected parental cell line, HEK (filled triangles). Data are represented as the mean \pm S.E.M., $n = 3$.

DA induced activation of G_s should produce an increase in cAMP via the positive coupling of G_{α_s} to adenylyl cyclase. We therefore measured cAMP levels in HEK $D_{1\alpha Pan}$ and parental HEK cells in response to DA. Fig. 3 illustrates that DA caused a dose dependent increase in HEK $D_{1\alpha Pan}$ cAMP levels, with an EC_{50} of 1.1×10^{-8} M. However, DA had no effect on cAMP levels in the parental HEK cell line. Constitutive activity, or agonist independent activity, is a well documented characteristic of many GPCRs (Seifert and Wenzel-Seifert, 2002). It can be identified as a significant increase in second messenger levels under baseline conditions (no ligand in media) in transfected cell lines expressing a GPCR relative to the parental cell lines that do not express the receptor. In the absence of DA, levels of cAMP are not significantly different between the HEK $D_{1\alpha Pan}$ and HEK cell lines (Fig. 3), suggesting $D_{1\alpha Pan}$ is not constitutively active when expressed in HEK cells. Similarly, the mammalian $D_{1/1A}$ receptor does not appear to be constitutively active in heterologous expression systems (Misale et al., 1998).

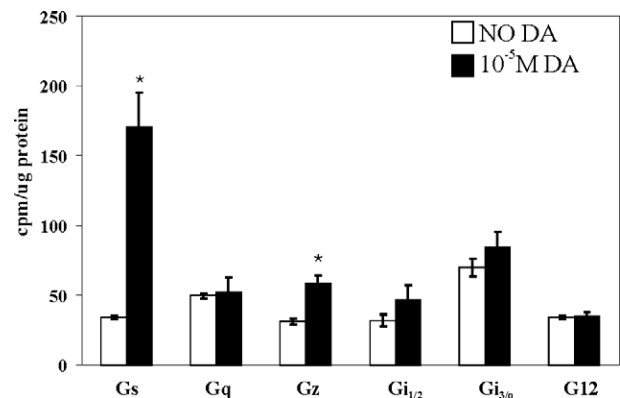


Fig. 4. The $D_{1\beta Pan}$ receptor couples with G_s and G_z . G protein activities in HEK $D_{1\beta Pan}$ membrane preparations were measured in the absence (open bar) vs. the presence (filled bar) of 10^{-5} M DA for eight G proteins: G_s , G_q , G_z , G_{i1} , G_{i2} , G_{i3} , G_o , G_{12} . Data represent the mean \pm S.E.M., $n \geq 3$. Statistically significant differences in the activity of a given G protein are indicated with an asterisk ($p < 0.05$).

3.3. $D_{1\beta Pan}$ couples with G_s and G_z in HEK cells, resulting in increased $[cAMP]_i$

Insect orthologs of the arthropod $D_{1\beta}$ receptor have previously been shown to positively couple with adenylyl cyclase, suggesting that this receptor couples to G_s (Blenau et al., 1998; Gotzes et al., 1994; Sugamori et al., 1995). We performed the G protein activation assay on the HEKD $_{1\beta Pan}$ cell lines to determine $D_{1\beta Pan}$ receptor-G protein coupling. Fig. 4 indicates that the $D_{1\beta Pan}$ receptor couples with multiple G proteins. A 15 min exposure to 10 μ M DA produced a ~5-fold increase in G_{α_s} activity ($p < 0.002$). DA also produced a significant 1.6-fold increase in the activity of G_{α_z} ($p < 0.004$), a PTX insensitive member of the G_i/o family that negatively couples with adenylyl cyclase to reduce cAMP levels (Ho and Wong, 2001). The stimulation of G_s was roughly 3 times larger than that of G_z . The human D_{1B}/D_5 receptor has also been shown to couple with G_s and G_z in GH $_4$ C $_1$ cells (Sidhu et al., 1998).

Fig. 3 indicates that the $D_{1\beta Pan}$ receptor couples with G proteins that regulate adenylyl cyclase in opposing directions (i.e., G_s increases adenylyl cyclase activity while G_z decreases adenylyl cyclase activity). Since DA induced G_s activity was three times larger than DA induced G_z activity, we predicted that DA should elicit a net increase in cAMP in HEKD $_{1\beta Pan}$ cell lines. Fig. 5 illustrates that stable cell lines expressing different isoforms of the full-length lobster $D_{1\beta}$ receptor (HEK $D_{1\beta,1Pan}$ and HEK $D_{1\beta,2Pan}$) show a dose dependent increase in cAMP in response to increasing concentrations of DA, with EC_{50} s between 1 and 1.4×10^{-6} . In addition, the $D_{1\beta Pan}$ isoforms appear to be constitutively active. As shown in Fig. 5, in the absence of DA cAMP levels were significantly higher in HEK $D_{1\beta Pan}$ cells relative to parental cells ($p < 10^{-5}$ for both isoforms). Thus, both isoforms of the $D_{1\beta Pan}$ receptor display agonist independent activity like the mammalian D_{1B}/D_5 receptor (Demchyshyn et al., 2000). The data do not indicate whether coupling with G_z was also constitutive.

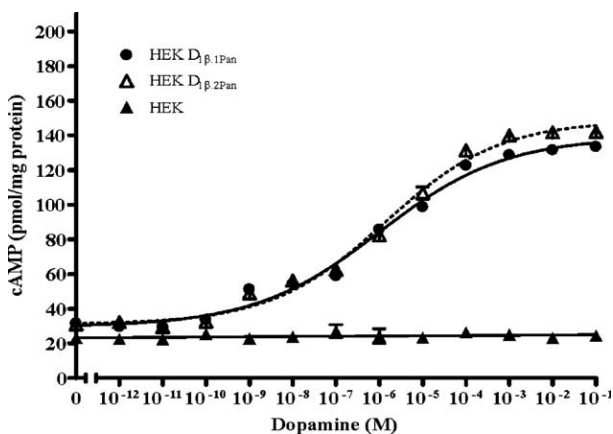


Fig. 5. DA activation of the $D_{1\beta Pan}$ receptor produces a net increase in cAMP. The $D_{1\beta Pan}$ receptor couples positively with cAMP. Changes in cAMP levels in response to increasing [DA] were measured in the nontransfected parental cell line (HEK, filled triangles) and in two stably transfected cell lines expressing the $D_{1\beta Pan}$ receptor. We identified two isoforms for the $D_{1\beta Pan}$ receptor, and established cell lines for each: HEK $D_{1\beta,1Pan}$ (circles) and HEK $D_{1\beta,2Pan}$ (open triangle). Data represent the mean \pm S.E.M., $n = 5$.

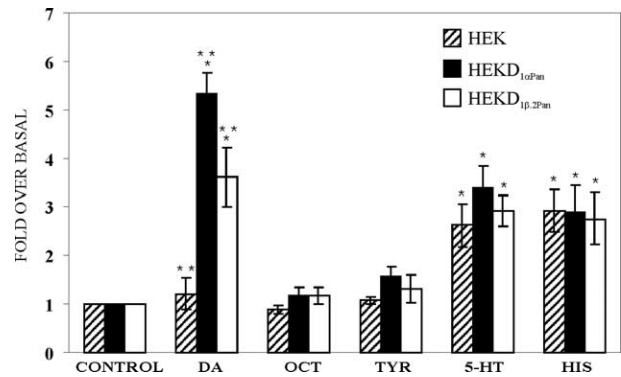


Fig. 6. Dopamine is the only endogenous monoamine that activates the $D_{1\alpha Pan}$ and $D_{1\beta Pan}$ receptors. Levels of cAMP were measured in HEK (hatched bars), HEKD $_{1\alpha Pan}$ (filled bars) and HEKD $_{1\beta Pan,2}$ (open bars) cell lines under control conditions (no monoamines present) or in the presence of 1 mM of the indicated monoamine. The cAMP levels measured in the presence of the indicated monoamine were normalized by cAMP levels under control conditions. Average fold changes over basal cAMP levels are plotted, error bars indicate the S.E.M., $n \geq 3$. * Indicates significant increases in cAMP over basal levels ($p < 0.05$). ** Indicates significant differences ($p < 0.05$) between cell lines within the same condition (e.g., differences between cell lines exposed to DA).

3.4. Dopamine activates lobster type 1 DA-Rs

Monoamines act as circulating neurohormones and neurotransmitters in the STNS. Five endogenous biogenic amines can modulate STNS neurons: dopamine, serotonin (5-HT), tyramine, octopamine and histamine. In some cases, it has been reported that arthropod DARs can respond to multiple monoamines in heterologous expression systems (Hearn et al., 2002). Activation of lobster DARs by multiple monoamines could have important implications for monoaminergic signal transduction in the STNS. We therefore asked which of the endogenous monoamines could activate $D_{1\alpha Pan}$ and $D_{1\beta Pan}$ receptors.

Levels of cAMP were measured in three cell lines (HEK, HEKD $_{1\alpha Pan}$ and HEKD $_{1\beta,2Pan}$) before and after exposure to one of the five monoamines. Fig. 6 illustrates that DA activation of $D_{1\alpha Pan}$ and $D_{1\beta Pan}$ produced significant, approximately 5.3- and 3.6-fold increases in cAMP levels in the HEK $D_{1\alpha Pan}$ and HEKD $_{1\beta Pan}$ cell lines, respectively, but had no significant effect on the parental HEK cell line. Thus, the heterologously expressed receptors are responsible for the DA-induced increase in cAMP in HEKD $_{1\alpha Pan}$ and HEKD $_{1\beta Pan}$ cell lines.

At a concentration of 1 mM, octopamine and tyramine had no significant effect on any of the three cell lines examined. On the other hand, Fig. 6 demonstrates that 1 mM 5-HT produced a significant, roughly 3-fold increase in cAMP in HEK cells, suggesting that the parental cell line contains endogenous 5-HT receptors that are positively coupled to adenylyl cyclase, as has been previously reported (Johnson et al., 2003b). The same increase was observed in the HEKD $_{1\alpha Pan}$ and HEKD $_{1\beta Pan}$ cell lines. The 5-HT induced cAMP increases in all three cell lines were not significantly different from one another, suggesting that the responses are due to the endogenous 5-HT receptors and not the heterologously expressed DARs.

Similarly, the parental HEK cell line appears to express endogenous histamine receptors, as 1 mM histamine produced a

Table 2
Comparison of G protein C-termini across species

G α_s	H: RMHLRQYELL L: RMHLRQYELL
G α_q	H: QLNLKEYNLV L: QLNLKEYNLV
G $\alpha_{11/2}$	H: KNNLKDCGLF L: KNNLKDCGLF
G α_o	H: AKNLRGCGLY F: ANNLRGCGLY
G α_{12}	H: QENLKDIMLQ F: QRNLNALMLQ
G α_f	F: SENVSSMGLF

H = human, L = lobster, F = fly.

significant, approximately 3-fold increase in cAMP in HEK cells. This increase was also observed in the HEKD $_{1\alpha\text{Pan}}$ and HEKD $_{1\beta\text{Pan}}$ cell lines. The responses in the three cell lines were not significantly different from one another, suggesting that they were due to the endogenous histamine receptors and not the heterologously expressed DARs. In summary, DA activates D $_{1\alpha\text{Pan}}$ and D $_{1\beta\text{Pan}}$ receptors, but serotonin, histamine, octopamine and tyramine do not.

4. Discussion

The work presented here represents the first step toward defining the molecular underpinnings of dopaminergic neuro-modulation in the STNS. We have shown that the structure and function of the spiny lobster DARs, D $_{1\alpha\text{Pan}}$ and D $_{1\beta\text{Pan}}$, are conserved across class and phyla. D $_{1\alpha\text{Pan}}$ couples with Gs to increase cAMP while D $_{1\beta\text{Pan}}$ couples with Gs and Gz to produce a net increase in cAMP. Moreover, of the 5 biogenic amines tested, only DA activated these receptors.

In all systems, dopaminergic effects are mediated through GPCRs that interact with G proteins. Both G proteins and GPCRs are well conserved across vertebrate/invertebrate lines, especially with regard to interaction domains. Indeed, Table 2 shows that the C-terminal domain of the G protein, which physically interacts with the GPCR, is identical for homologous G proteins in lobsters and humans! There are 6 G α proteins in arthropods: G α_s , G α_f (Gs-like at the DNA level), G α_q , G α_i , G α_o , G α_{12} (<http://flybase.net/>). Three of the G proteins have been cloned from lobster (McClintock et al., 1992, 1997; Xu et al., 1997). As shown in Table 2, the C-termini of lobster G α_s , G α_q and G α_i are completely conserved with their human homologs. Thus, it is reasonable to probe the coupling specificity of spiny lobster GPCRs in human cell lines.

Traditionally, DARs were thought to couple only with Gs to increase [cAMP] $_i$ and Gi/o to decrease [cAMP] $_i$; however, recent studies in heterologous expression systems, including the one presented here, suggest that DAR-G protein coupling can be much more diverse (Sidhu and Niznik, 2000). For example, D $_1$ /D $_{1A}$ can couple with Gs and G $_o$ in reconstitution experiments or in overexpression experiments with rat pituitary GH $_4$ C $_1$ cells (Kimura et al., 1995a,b). D $_{1B}$ /D $_5$ can couple with Gs and Gz in GH $_4$ C $_1$ cells (Sidhu et al., 1998), or with Gs and G12 in immortalized rat renal proximal tubule

cells (Zheng et al., 2003). D $_2$ receptors couple with multiple members of the Gi/o family (Banihashemi and Albert, 2002; Ghahremani et al., 1999; Obadiah et al., 1999). When expressed in CHO cells, human D $_3$ receptors may couple with the Gi/o and Gq families (Newman-Tancredi et al., 1999). Studies in native systems also suggest non-classical coupling such that D $_1$ receptors may couple with Gs and Gq in the mammalian and *C. elegans* CNS (Chase et al., 2004; O'Sullivan et al., 2004; Undie et al., 2000; Wersinger et al., 2003; Zhen et al., 2004).

It is interesting that the lobster D $_{1\beta\text{Pan}}$ receptor, like the human D $_{1B}$ /D $_5$ receptor, can couple with both Gs and Gz. We do not know the proteins that interact with the lobster DARs to facilitate multiple couplings. Both post-translational modifications and receptor-interacting proteins can cause a receptor to switch G protein coupling. When phosphorylated by protein kinase A, the β_2 -adrenergic receptor switches its coupling from Gs to Gi (Baillie et al., 2003; Daaka et al., 1997). Receptor coupling can also be extended by receptor-interacting proteins, like calycon, which regulates receptor cross-talk and allows D $_1$ receptors to switch coupling between Gs and Gq (Lezcano et al., 2000). It is not obvious why this receptor would couple to multiple cascades that have opposing effects on cAMP. It is possible that the population of cells is heterogeneous so that there is only one type of coupling per cell. On the other hand, when simultaneously activated, opposing cascades in a single cell may be highly localized so that microdomains of cAMP gradients are created (Zaccolo and Pozzan, 2002). Alternatively the cascades may function with different kinetics and interact to generate feedback loops and/or multiphasic responses.

Acknowledgements

We thank Nadja Spitzer and Elizabeth Prince for useful comments on the manuscript. This work was supported, in part, by NIH NS38770 and the STC Program of the National Science Foundation, IBN-9876754. MCC is an MBD fellow.

References

- Baillie, G.S., Sood, A., McPhee, I., Gall, I., Perry, S.J., Lefkowitz, R.J., Houslay, M.D., 2003. beta-Arrestin-mediated PDE4 cAMP phosphodiesterase recruitment regulates beta-adrenoceptor switching from Gs to Gi. *Proc. Natl. Acad. Sci. U. S. A.* 100, 940–945.
- Banihashemi, B., Albert, P.R., 2002. Dopamine-D2S receptor inhibition of calcium influx, adenylyl cyclase, and mitogen-activated protein kinase in pituitary cells: distinct Galpha and Gbetagamma requirements. *Mol. Endocrinol.* 16, 2393–2404.
- Beltz, B.S., 1999. Distribution and functional anatomy of amine-containing neurons in decapod crustaceans. *Microsc. Res. Tech.* 44, 105–120.
- Blenau, W., Erber, J., Baumann, A., 1998. Characterization of a dopamine D1 receptor from *Apis mellifera*: cloning, functional expression, pharmacology, and mRNA localization in the brain. *J. Neurochem.* 70, 15–23.
- Bucher, D., Thirumalai, V., Marder, E., 2003. Axonal dopamine receptors activate peripheral spike initiation in a stomatogastric motor neuron. *J. Neurosci.* 23, 6866–6875.
- Cabrera-Vera, T.M., Vanhauwe, J., Thomas, T.O., Medkova, M., Preininger, A., Mazzoni, M.R., Hamm, H.E., 2003. Insights into G protein structure, function, and regulation. *Endocr. Rev.* 24, 765–781.

- Callier, S., Snappyan, M., Le Crom, S., Prou, D., Vincent, J.D., Vernier, P., 2003. Evolution and cell biology of dopamine receptors in vertebrates. *Biol. Cell* 95, 489–502.
- Chase, D.L., Pepper, J.S., Koelle, M.R., 2004. Mechanism of extrasynaptic dopamine signaling in *Caenorhabditis elegans*. *Nat. Neurosci.* 7, 1096–1103.
- Clark, M.C., Dever, T.E., Dever, J.J., Xu, P., Rehder, V., Sosa, M.A., Baro, D. J., 2004. Arthropod 5-HT₂ receptors: a neurohormonal receptor in decapod crustaceans that displays agonist independent activity resulting from an evolutionary alteration to the DRY motif. *J. Neurosci.* 24, 3421–3435.
- Cleland, T.A., Selverston, A.I., 1997. Dopaminergic modulation of inhibitory glutamate receptors in the lobster stomatogastric ganglion. *J. Neurophysiol.* 78, 3450–3452.
- Cooper, R.L., Neckameyer, W.S., 1999. Dopaminergic modulation of motor neuron activity and neuromuscular function in *Drosophila melanogaster*. *Comp. Biochem. Physiol., Part B* 122 (2), 199–210 (February).
- Daaka, Y., Luttrell, L.M., Lefkowitz, R.J., 1997. Switching of the coupling of the beta₂-adrenergic receptor to different G proteins by protein kinase A. *Nature* 390, 88–91.
- Demchyshyn, L.L., McConkey, F., Niznik, H.B., 2000. Dopamine D₅ receptor agonist high affinity and constitutive activity profile conferred by carboxyl-terminal tail sequence. *J. Biol. Chem.* 275, 23446–23455.
- Feng, G., Hannan, F., Reale, V., Hon, Y.Y., Kousky, C.T., Evans, P.D., Hall, L.M., 1996. Cloning and functional characterization of a novel dopamine receptor from *Drosophila melanogaster*. *J. Neurosci.* 16, 3925–3933.
- Ghahremani, M.H., Cheng, P., Lembo, P.M., Albert, P.R., 1999. Distinct roles for Galphai₂, Galphai₃, and Gbeta gamma in modulation of forskolin- or Gs-mediated cAMP accumulation and calcium mobilization by dopamine D₂S receptors. *J. Biol. Chem.* 274, 9238–9245.
- Gotzes, F., Balfanz, S., Baumann, A., 1994. Primary structure and functional characterization of a *Drosophila* dopamine receptor with high homology to human D₁/5 receptors. *Recept. Channels* 2, 131–141.
- Han, K.A., Millar, N.S., Grotewiel, M.S., Davis, R.L., 1996. DAMB, a novel dopamine receptor expressed specifically in *Drosophila* mushroom bodies. *Neuron* 16, 1127–1135.
- Harris-Warrick, R.M., Nagy, F., Nusbaum, M.P., 1992. Neuromodulation of stomatogastric networks by identified neurons and transmitters. In: Harris-Warrick, R.M., Marder, E., Selverston, A.I., Moulins, M. (Eds.), *Dynamic Biological Networks: The Stomatogastric Nervous System*. MIT Press, Cambridge, pp. 87–137.
- Harris-Warrick, R.M., Johnson, B.R., Peck, J.H., Kloppenburg, P., Ayali, A., Skarbinski, J., 1998. Distributed effects of dopamine modulation in the crustacean pyloric network. *Ann. N. Y. Acad. Sci.* 860, 155–167.
- Hearn, M.G., Ren, Y., McBride, E.W., Reveillaud, I., Beinborn, M., Kopin, A. S., 2002. A *Drosophila* dopamine 2-like receptor: molecular characterization and identification of multiple alternatively spliced variants. *Proc. Natl. Acad. Sci. U. S. A.* 99, 14554–14559.
- Ho, M.K., Wong, Y.H., 2001. G(z) signaling: emerging divergence from G(i) signaling. *Oncogene* 20, 1615–1625.
- Hooper, S.L., DiCaprio, R.A., 2004. Crustacean motor pattern generator networks. *Neurosignals* 13, 50–69.
- Johnson, B.R., Kloppenburg, P., Harris-Warrick, R.M., 2003a. Dopamine modulation of calcium currents in pyloric neurons of the lobster stomatogastric ganglion. *J. Neurophysiol.* 90, 631–643.
- Johnson, M.S., Lutz, E.M., Firbank, S., Holland, P.J., Mitchell, R., 2003b. Functional interactions between native Gs-coupled 5-HT receptors in HEK-293 cells and the heterologously expressed serotonin transporter. *Cell. Signal.* 15, 803–811.
- Kapsimali, M., Le Crom, S., Vernier, P., 2003. A natural history of vertebrate dopamine receptors. In: A.S., M.L., P.V. (Eds.), *Dopamine Receptors and Transporters: Function, Imaging and Clinical Implication*, second edn. Marcel Dekker, Inc., New York, pp. 1–43.
- Kimura, K., Sela, S., Bouvier, C., Grandy, D.K., Sidhu, A., 1995a. Differential coupling of D₁ and D₅ dopamine receptors to guanine nucleotide binding proteins in transfected GH4C1 rat somatomammotrophic cells. *J. Neurochem.* 64, 2118–2124.
- Kimura, K., White, B.H., Sidhu, A., 1995b. Coupling of human D-1 dopamine receptors to different guanine nucleotide binding proteins. Evidence that D-1 dopamine receptors can couple to both Gs and G(o). *J. Biol. Chem.* 270, 14672–14678.
- Kloppenburger, P., Levini, R.M., Harris-Warrick, R.M., 1999. Dopamine modulates two potassium currents and inhibits the intrinsic firing properties of an identified motor neuron in a central pattern generator network. *J. Neurophysiol.* 81, 29–38.
- Le Crom, S., Kapsimali, M., Barome, P.O., Vernier, P., 2003. Dopamine receptors for every species: gene duplications and functional diversification in craniates. *J. Struct. Funct. Genomics* 3, 161–176.
- Lezcano, N., Mrzljak, L., Eubanks, S., Levenson, R., Goldman-Rakic, P., Bergson, C., 2000. Dual signaling regulated by calycon, a D₁ dopamine receptor interacting protein. *Science* 287, 1660–1664.
- McClintock, T.S., Byrnes, A.P., Lerner, M.R., 1992. Molecular cloning of a G-protein alpha i subunit from the lobster olfactory organ. *Brain Res. Mol. Brain Res.* 14, 273–276.
- McClintock, T.S., Xu, F., Quintero, J., Gress, A.M., Landers, T.M., 1997. Molecular cloning of a lobster G alpha(q) protein expressed in neurons of olfactory organ and brain. *J. Neurochem.* 68, 2248–2254.
- Missale, C., Nash, S.R., Robinson, S.W., Jaber, M., Caron, M.G., 1998. Dopamine receptors: from structure to function. *Physiol. Rev.* 78, 189–225.
- Neve, K.A., Seamans, J.K., Trantham-Davidson, H., 2004. Dopamine receptor signaling. *J. Recept. Signal Transduct. Res.* 24, 165–205.
- Newman-Tancredi, A., Cussac, D., Audinot, V., Pasteau, V., Gavaudan, S., Millan, M.J., 1999. G protein activation by human dopamine D₃ receptors in high-expressing Chinese hamster ovary cells: a guanosine-5'-O-(3-[35S]thio)-triphosphate binding and antibody study. *Mol. Pharmacol.* 55, 564–574.
- Nusbaum, M.P., 2002. Regulating peptidergic modulation of rhythmically active neural circuits. *Brain Behav. Evol.* 60, 378–387.
- Nusbaum, M.P., Beenhakker, M.P., 2002. A small-systems approach to motor pattern generation. *Nature* 417, 343–350.
- O'Sullivan, G.J., Roth, B.L., Kinsella, A., Waddington, J.L., 2004. SK and F 83822 distinguishes adenylyl cyclase from phospholipase C-coupled dopamine D₁-like receptors: behavioural topography. *Eur. J. Pharmacol.* 486, 273–280.
- Obadia, J., Avidor-Reiss, T., Fishburn, C.S., Carmon, S., Bayewitch, M., Vogel, Z., Fuchs, S., Levavi-Sivan, B., 1999. Adenylyl cyclase interaction with the D₂ dopamine receptor family; differential coupling to Gi, Gz, and Gs. *Cell. Mol. Neurobiol.* 19, 653–664.
- Peck, J.H., Nakanishi, S.T., Yapple, R., Harris-Warrick, R.M., 2001. Amine modulation of the transient potassium current in identified cells of the lobster stomatogastric ganglion. *J. Neurophysiol.* 86, 2957–2965.
- Seifert, R., Wenzel-Seifert, K., 2002. Constitutive activity of G-protein-coupled receptors: cause of disease and common property of wild-type receptors. *Naunyn Schmiedeberg's Arch. Pharmacol.* 366, 381–416.
- Sidhu, A., Niznik, H.B., 2000. Coupling of dopamine receptor subtypes to multiple and diverse G proteins. *Int. J. Dev. Neurosci.* 18, 669–677.
- Sidhu, A., Kimura, K., Uh, M., White, B.H., Patel, S., 1998. Multiple coupling of human D₅ dopamine receptors to guanine nucleotide binding proteins Gs and Gz. *J. Neurochem.* 70, 2459–2467.
- Sosa, M.A., Spitzer, N., Edwards, D.H., Baro, D.J., 2004. A crustacean serotonin receptor: cloning and distribution in the thoracic ganglia of crayfish and freshwater prawn. *J. Comp. Neurol.* 473, 526–537.
- Srivastava, D.P., Yu, E.J., Kennedy, K., Chatwin, H., Reale, V., Hamon, M., Smith, T., Evans, P.D., 2005. Rapid, nongenomic responses to ecdysteroids and catecholamines mediated by a novel *Drosophila* G-protein-coupled receptor. *J. Neurosci.* 25, 6145–6155.
- Strawn, J.R., Neckameyer, W.S., Cooper, R.L., 2000. The effects of 5-HT on sensory, central and motor neurons driving the abdominal superficial flexor muscles in the crayfish. *Comp. Biochem. Physiol., Part B* 127 (4), 533–550 (December).
- Sugamori, K.S., Demchyshyn, L.L., McConkey, F., Forte, M.A., Niznik, H.B., 1995. A primordial dopamine D₁-like adenylyl cyclase-linked receptor from *Drosophila melanogaster* displaying poor affinity for benzazepines. *FEBS Lett.* 362, 131–138.

- Tierney, A.J., Greenlaw, M.A., Dams-O'Connor, K., Aig, S.D., Perna, A.M., 2004. Behavioral effects of serotonin and serotonin agonists in two crayfish species, *Procambarus clarkii* and *Orconectes rusticus*. *Comp. Biochem. Physiol., Part A* 139 (4), 495–502 (December).
- Undie, A.S., Berki, A.C., Beardsley, K., 2000. Dopaminergic behaviors and signal transduction mediated through adenylate cyclase and phospholipase C pathways. *Neuropharmacology* 39, 75–87.
- Wersinger, C., White, B.H., Sidhu, A., Senogles, S.E., 2003. Physiology, pharmacology, and pathophysiology of the D1-like family of dopamine receptors in the central nervous system. In: Sidhu, A., Laruelle, M., Vernier, P. (Eds.), *Dopamine Receptors and Transporters: Function, Imaging and Clinical Implication*. Marcel Dekker, Inc., New York, pp. 145–210.
- Xu, F., Hollins, B., Gress, A.M., Landers, T.M., McClintock, T.S., 1997. Molecular cloning and characterization of a lobster G α S protein expressed in neurons of olfactory organ and brain. *J. Neurochem.* 69, 1793–1800.
- Zaccolo, M., Pozzan, T., 2002. Discrete microdomains with high concentration of cAMP in stimulated rat neonatal cardiac myocytes. *Science* 295, 1711–1715.
- Zhen, X., Goswami, S., Abdali, S.A., Gil, M., Bakshi, K., Friedman, E., 2004. Regulation of cyclin-dependent kinase 5 and calcium/calmodulin-dependent protein kinase II by phosphatidylinositol-linked dopamine receptor in rat brain. *Mol. Pharmacol.* 66, 1500–1507.
- Zheng, S., Yu, P., Zeng, C., Wang, Z., Yang, Z., Andrews, P.M., Felder, R.A., Jose, P.A., 2003. Galpha12- and Galpha13-protein subunit linkage of D5 dopamine receptors in the nephron. *Hypertension* 41, 604–610.
- Zhou, H., Murthy, K.S., 2004. Distinctive G protein-dependent signaling in smooth muscle by sphingosine 1-phosphate receptors S1P1 and S1P2. *Am. J. Physiol., Cell Physiol.* 286, C1130–C1138.