

Frequently Asked Questions



DUAL LANGUAGE MAGNET PROGRAM

1 Why should I consider the Dual Language Program?

- Students in Dual Language experience higher academic, cognitive, social, and future benefits compared to students who participate in all English courses.

2 Can students transfer from other school districts into the Dual Language Program?

- All transfer students must meet the same criteria, as stated in the Lufkin ISD Dual Language Handbook. The Director of Bilingual/ESL programs and the campus principal will review student information. If they do meet the criteria, student can transfer under Monitored Status for nine weeks to determine permanent placement.

3 Is there a fee associated with testing or participation in the Dual Language program at Lufkin ISD?

- There is no fee for Dual testing, and there is no tuition for any student, including those who do not live in the district.

4 If my child qualifies for Dual Language, where does he or she go to school?

- All Dual Language students in Kinder-1st grades go to Burley Primary; 2nd – 5th graders go to Slack Elementary; secondary students are served at LMS and LHS.

5 If my child does not qualify for Dual Language, may he or she be referred for testing again?

- Children may be referred and screened again prior to entering Kinder, if space is available. If your child is on a waitlist, the Bilingual Department will notify you if your child moves to the qualified list.

6 I tested my student for Dual Language and Gifted and Talented. Can he/she qualify for both?

- Beginning next year, some students entering kindergarten may qualify for both Gifted and Talented services and Dual Language.
- For this option, students must apply and achieve a superior verbal score on the G/T assessment and apply and meet testing criteria for Dual Language.
- The focus of G/T services delivered through Dual Language will be second language acquisition; different from the focus of services at Dunbar.

7 If we choose Dual Language instead of Gifted and Talented, what opportunities are offered at the secondary level?

- Dual Language is considered an advanced magnet program. Most Advanced, Advanced Placement, and Dual Credit courses at the secondary level are open enrollment. STEM Prep and English/LA G/T students must meet specific requirements.
- Various options are available for Dual Language students in the four core academic areas, specifically in the academic field in which they demonstrate strengths.
- If students meet state criteria, students could receive the Language Other than English (LOTE) Credit.

8 If my child is in the Dual Language Program at Burley or Slack, but that campus is not our home campus, can my child still receive transportation?

- If you live within the boundaries of Lufkin ISD, your child can be bussed to the Dual Language campus from your home address. The transportation department can assist you with this process at 936-630-7461.

9 What is the role of a parent in a Dual Language Program, especially if I do not know the second language?

- Teachers are aware that students may come from a monolingual home and consider this when assigning homework. Although there will be some level of frustration, Dual Language teachers and campus leaders will provide guidance and resources to assist your child at home.



If you have any other questions, please call the Bilingual Department at (936) 630-4250

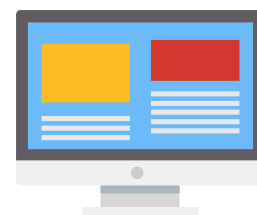


HELPFUL SUGGESTIONS TO IMPROVE ACQUISITION OF THE SECOND LANGUAGE

The following list includes ideas and suggestions to assist parents who have children enrolled in the LISD Dual Language Magnet Program.

- Review class work/assignments daily.
- Read, read, read in the second language – books, magazines, newspapers, etc.
- Purchase a quality Spanish/English dictionary
- Review word wall words, high frequency words, and phrases in the second language daily.
- Maintain consistent teacher contact/communication either through email, class home folder, telephone, and/or conferences.
- Ask questions.
- Create a “Parent Bilingual Buddy” system similar to the “Bilingual Buddies” established in the classroom.
- Have your child listen to the second language radio stations while in the car.
- Children can watch TV, videos, and cartoons in their second language.
- Access websites that can assist parents.

HELPFUL WEBSITES



Translation Support:

- www.freetranslation.com
- <http://translate.google.com/#>
- www.completespanishguide.com
- www.apples4theteacher.com
- www.learnspanish.com

Spanish Websites For Children:

- www.123teachme.com
 - Your child can conjugate verbs, translate, work on vocabulary, dictionaries and a lot more.
- <http://www.wordreference.com/>
- <http://www.spanishclassonline.com/games/index.htm>
- <http://www.gamequarium.com/spanishvocabulary.html>
- www.spanishdict.com (This website can help with how to pronounce words correctly.)
- www.disneylatino.com
- www.colorincolorado.org
- <http://www.storyplace.org/>
 - Books in Spanish and English to listen to online.
- <http://www.bookbox.com/>
 - Spanish stories to listen to online.
- <http://primarygamesarena.com/Spanish>
- <http://www.bbc.co.uk/schools/primarylanguages/spanish/sound>