

Mac VPN Global Portal Windows VPN Global Portal

From the Google Chrome browser, download the VPN client by clicking on the following link. <https://vpn.sienaheights.edu>. Log in using your **Siena Heights Credentials**.

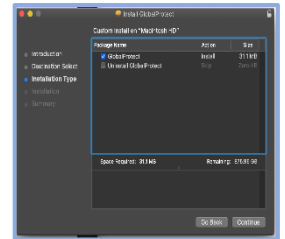
Username: [your username](#)

Password: your **Mysiena password**

Next, click on the **login button**. Click on the only, **Download Mac Global Protect agent link**. From the **lower-left corner** of the Google Chrome website tap on the **client** download, upon completion.

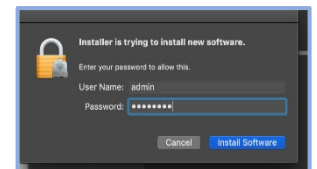


Begin the installation and click on the **Continue button from the GlobalProtect menu**. Next, click on the **continue button, to install on your Mac Hd**. The last menu will be the Custom Install on the MacHD, click on the **Continue button**, and then **install**, to complete the installation.

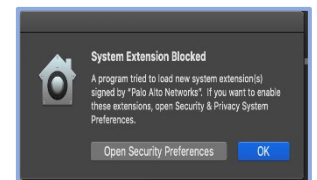


Installation Secure Setup VPN Vpn.sienaheights.edu prelogon.sienaheights.edu

Next, the **Installer** menu message is trying to install new software. Type in your **user or admin name and password** from your Mac computer and click on the **Install Software button**.



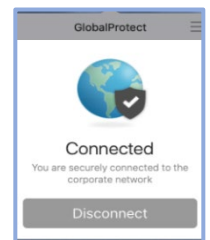
The System Extension Blocked, click on the **Open security Preferences button, to allow the Software to installation** on your computer, and from the **Security & Privacy icon, under the General tab**.



On the top right corner of your Mac, is the Global Connect which will look like a world icon, click on the icon one time and enter the **portal address, vpn.sienaheights.edu**, and then click on the **connect button**.

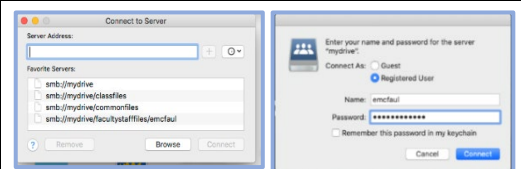
Pre-logon accounts are as follows:
prelogon.sienaheights.edu

Next, type in your **Username** and **Password**, from your mysiena account, and then **click on the connect button**.



Mapping your Sienanet Drive to your Mac computer

Once you have connected to the **Global Protect**, on your keyboard, simultaneously, then tap on the **Command + K**, or go to the upper right corner, go to the **search feature** and type the following information under the **Connect to Server menu**, open slot. Look into the Illustrations to the right: **smb://mydrive/facultystafffiles/yourusername**, and then click on the **connect button**.



Your username account will appear in the finder open menu. By clicking on your username under the **favorites section of your finder**, the new location is a first-rate way to move, open and save your network files to your network drive. Network Files will mount on the desktop, and you can move network locations to the dock, or under the finder menu, tap on applications and drag under the **favorite menu**.

