

CNICS is a dynamic network that is a key resource reflecting current decisions and outcomes in the day-to-day care of people with HIV in actual clinic settings. Over the last 17 years, CNICS has made a huge impact as a research platform for investigators around the world in HIV basic, translational, clinical, and public health research.

## Significance as a unique resource

CNICS is available to *any investigator* for the advancement of HIV/AIDS research.

**29%** of investigators using CNICS are from outside the 10 sites

## Successful studies leading to funding

Studies in CNICS have resulted in

**\$147M**

from **118** external research grants



## Continued impact on HIV/AIDS research

Investigators have developed over **228** concept proposals to work in CNICS over the last 17 years



**81%** of concept proposals are led by early to mid-career investigators

## High level of Innovation

Uses a **standardized approach** to collecting patient reported outcomes (PROs) with over **111,000** computerized assessments collected to date from over **25,000** PWH to facilitate care and research as part of routine clinical care visits

Currently **48,051** patients enrolled in CNICS cohort

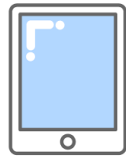


- >11,000 in cohort have **GWAS** data
- Geocoded data** available
- COVID-19** and **Monkey Pox** data integrated

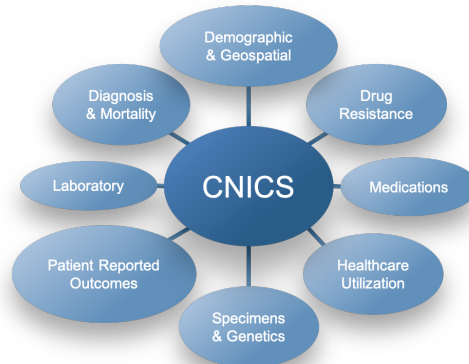
CNICS studies have resulted in

**504**

peer-reviewed publications over the last 17 years



## CNICS Data Repository



### Biological Specimens

linked to comprehensive patient data to support basic and translational research

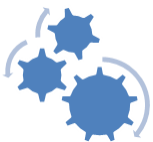
CNICS is able to detect rare events due to the large size of the cohort.

Serious comorbid conditions are more common due to inflammation and aging.



Rigorous standards for **data quality control** established by the CNICS Data Core

Combines carefully adjudicated outcomes with ongoing clinical assessments of PRO measures, genetic data, and



biological specimens for research collaboration and mentorship.

**10 sites** are active across the country: UNC, UAB, Case Western Reserve, UCSF, UCSD, Harvard, Johns Hopkins, UW, Miami and Vanderbilt

**ESI Mentoring Program & Working Group** supports early and mid-career investigators seeking career development in HIV research.



- Racially Varied: **over half are non-white**
- Geographically Diverse
- Age representation from 18 to >70 yrs old

**80% Male**  
**18% Female**  
**2% Transgender**

Request a **CNICS Collaborator** through our website to help develop your study idea into a concept for review.

CNICS is a **fertile resource** for addressing emergent scientific questions within its existing research network and well-developed infrastructure.



Learn more about CNICS and ongoing projects at [www.sites.uab.edu/cnics](http://www.sites.uab.edu/cnics)