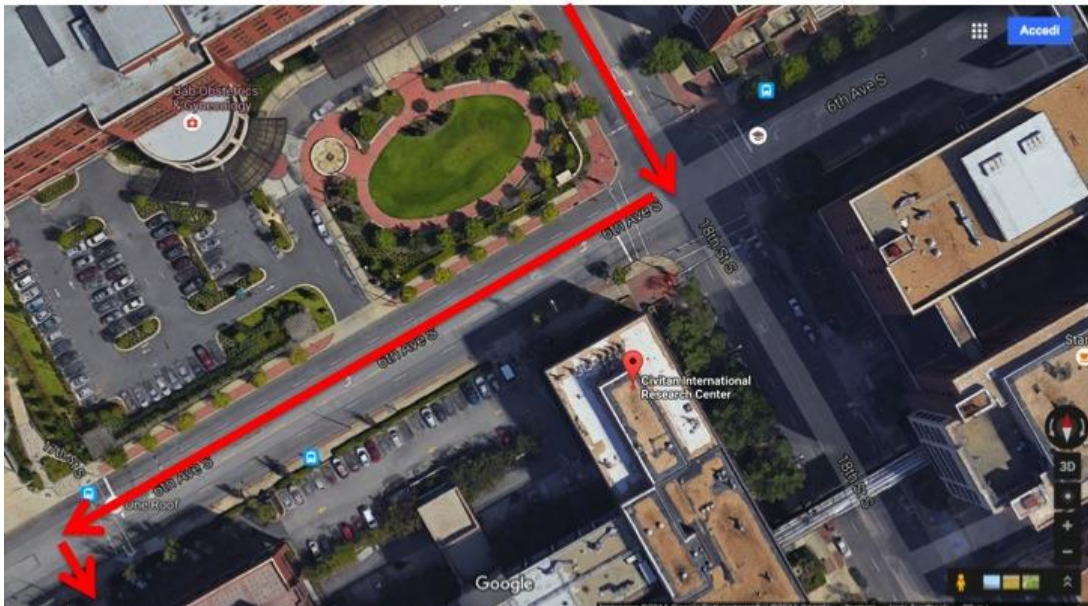


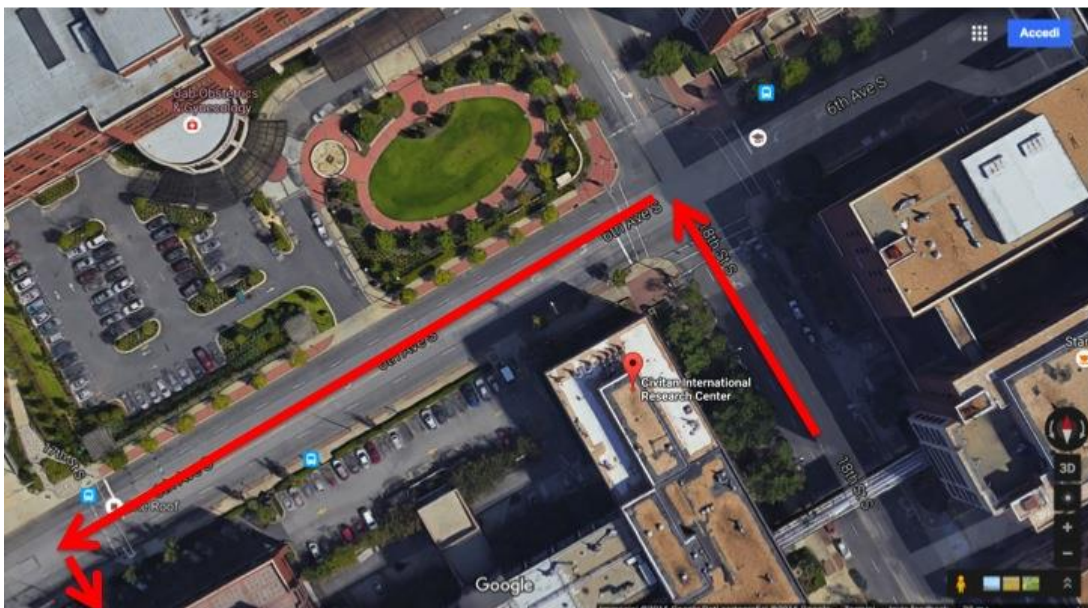
Directions to Civitan International Research Center

I-65 South: Exit at 4th Avenue South (Exit 259B) and proceed to 18th Street South. Turn right on 18th. Go two blocks to 6th Avenue South and turn right. Turn left into the parking lot in front of the Spain Rehabilitation Center.



I-65 North: Exit at University Boulevard (Exit 259). Proceed to 18th Street South and turn left. Go two blocks to 6th Avenue South and turn left. Turn left into the parking lot in front of the Spain Rehabilitation Center.

280 West: Follow Highway 280 until it merges to the right with Highway 31 North and becomes the Elton B. Stephens Expressway. Proceed north and exit at University Boulevard. Turn right onto University Boulevard and proceed to 18th Street South. Turn right. Go two blocks to 6th Avenue South and turn left. Turn left into the parking lot in front of the Spain Rehabilitation Center.



Parking: Upon entering the parking lot, you will receive a ticket at the gate. Proceed to valet parking (cost will be covered by the lab). Please bring this ticket to your appointment so we may provide proper validation. A researcher will meet you at the valet parking drop off point and escort you to the lab.