



Mike Anderson, ECAAHEC Scholar, Selected for NAO DC Fly-In



Mike Anderson, an Alabama AHEC Network Scholar Alumni from **ECAAHEC**, has achieved a remarkable milestone by being selected for the inaugural **NAO** AHEC Alumni/Advocate D.C. Fly-In on July 22, 2024! As the sole AHEC Scholar Alumni chosen for this prestigious event, Mike had the unique opportunity to meet with Congressional representatives in

Washington, D.C., advocating on behalf of AHECs nationwide. This honor underscores his dedication and the high esteem in which he is held within the AHEC community.

In addition to his advocacy work, Mike attended an educational session with the **Health Medicine Counsel**, NAO's esteemed government relations firm. This session provided valuable insights into the intricacies of healthcare advocacy, further equipping him to represent our state and the broader AHEC network with excellence and passion.

We are immensely proud to have such an outstanding AHEC Scholar Alumni like Mike Anderson representing Alabama and all AHECs. His selection is a testament to his hard work, commitment, and the exemplary qualities he brings to our program.

Alabama AHEC Network Scholars

Applications Open



Recruiting for Alabama AHEC Network Scholars

We are recruiting for the [Alabama AHEC Network Scholars program](#), applications close **September 15th**. Aspiring healthcare students can apply to embark on a transformative journey that combines education, community engagement, and hands-on experience. Alabama AHEC Network Scholars offers a unique opportunity to dive deep into interdisciplinary learning, preparing you for the dynamic landscape of modern healthcare.

Eligibility

Currently be enrolled in a health professions program with a minimum 2.5 GPA in one of the following fields:

- Medicine (MD/DO)
- Dentistry
- Clinical Psychology (PhD)
- Physician Assistant
- Nurse Practitioner
- Nurse Midwifery
- Pharmacy
- Optometry

**If you are interested in applying for the Scholars Program and your discipline is not listed above, please contact Rachel Watts at rwatts3@uab.edu.*

For More Information & to Apply

Alabama AHEC Network Scholars Didactic Redesign is Underway

As the [Alabama AHEC Network](#) undergoes significant structural changes, we are seizing the opportunity to reimagine our programs, particularly the [AHEC Scholars](#) program. By addressing the didactic portion, we aim to provide a more enriching experience for future health professionals. Transparent student evaluations helped us understand their motivations and identify gaps in the learning environment and professional development.

Our Education Redesign Committee, comprised of content experts, has revitalized the curriculum to reflect student feedback. Scholars will benefit from increased community-facing exposure and interdisciplinary collaboration through synchronous learning, while asynchronous learning will be streamlined into one unified Canvas course shell. We continue to offer valuable opportunities such as mentorships, interview skill enhancement, student-led statewide leadership positions, and certificate training, ensuring a comprehensive and impactful educational experience.

Thank you to our content experts for diving head first into this essential change! Our content experts include:

Lynn Stevenson - Executive Director Experiential Programs and Associate Clinical Professor at Auburn University	Lakesha Kinnerson, MPH, RHIA - Assistant Professor School of Public Health at Samford University
Leah Tompkins - Assistant Professor, MA Program Coordinator, & MPH Program Co-Coordinator at the University of Alabama	Dr. Danita Stapleton - Department Chair, Master of Science in Rehabilitation Counseling Program at Alabama State University
Jana Villanueva - Assistant Professor Physician Assistant Studies at the University of Alabama at Birmingham	Dr. Cecil Robinson - Director of Learning and Evaluation at the University of Alabama

NAAHEC's Camp LEAP 2024



This year, 18 high school students from 7 of **NAAHEC's** 13 counties took part in a Summer Enrichment 5-day residential program at **UAH** that promotes health careers exploration. Since its start in 2015, **Camp LEAP** has welcomed about 138 students, with at least three coming back as counselors, showing the program's lasting influence. Camp LEAP students participated in a range of activities focused on medical technology and innovation.

Camp LEAP students participated in a range of activities focused on medical technology and innovation. Highlights included tours of **UA Huntsville School of Nursing**, **UAB Biomedical Lab**, **Wallace State Community College**, and the **HudsonAlpha Institute for Biotechnology**. These experiences gave students firsthand exposure to the wide array of opportunities in the healthcare field.

Alabama AHEC Network Team Spotlight



We are excited to spotlight **Scott Boyd**, the dedicated Office Manager and CBET Program Director at **East Central Alabama AHEC**. Nominated by Paulisha Holt from the Network program office, Scott's contributions have been invaluable to the **Alabama AHEC Network**.

Recently, Scott provided exceptional support for the AHEC Scholar Payments, ensuring that mileage and housing payments flowed seamlessly from non-supported areas. His wonderful and helpful attitude, along with his extensive institutional AHEC knowledge, have made a significant impact on our programs.

Thank you, Scott, for your hard work, dedication, and positive energy!

Resources & Education

PRECEPTOR REGISTRATION NOW OPEN!

Register NOW for the Alabama Preceptor Tax Incentive Program (APTIP)

In 2023, Alabama legislature approved the **Alabama Preceptor Tax Incentive Program (APTIP)** to offer a tax deduction to uncompensated healthcare professions preceptors in our State. The goal of the APTIP is to increase medical student training in rural and underserved counties in Alabama.

Administered by the **Alabama AHEC Network**, APTIP provides a \$500 income tax credit incentive for each 160-hour clinical preceptorship rotation per calendar year for what would otherwise be unpaid work by community-based preceptors who meet eligibility requirements.

[Learn More & Register Here](#)

Student Rotations Housing Form

The **Alabama AHEC Network** frequently receives requests from students seeking housing in rural areas while they complete training rotations. If you know of potential housing availability for learners, please fill out the form below so that we may share this information with interested students.

[Learn More](#)

NAO Preceptor Study: Healthcare Burnout

NAO released an AHEC Preceptors' Survey study to gain insights into burnout, workplace mental health and well-being, fulfillment, and loneliness of AHEC preceptors nationally.

In partnership with NAO, the study was conducted by the team of Dr. Neil MacKinnon, pharmacist, professor, provost, and executive vice president for academic affairs at **Augusta University**.

The research yielded some interesting data mainly across four professions: physician, APN, PN, and pharmacist. Find a full report below.

[Read More](#)

Loss of Hospital-Based Obstetric Services in Rural Counties in the United States, 2010-2022

In the U.S., access to maternity care in rural counties is declining. An infographic from the FORHP-funded **University of Minnesota Rural Health Research Center** updates their **2017 analysis**, revealing that rural counties without hospital-based obstetric services increased from 54% in 2014 to nearly 59% in 2022. It highlights that rural non-core counties are much less likely to have, and more likely to lose, these services compared to rural micropolitan counties. The center uses a **two-stage method** with multiple data sources and validation checks for accuracy. Read full study below.

[Read More](#)

Learning Opportunities

Alabama AHEC Statewide Network Meeting & Training

When: Tuesday-Wednesday, August 20-21, 2024

Where: Birmingham

About This Event

On August 20-21, AHEC will kick off a new year with new partners at the Hilton Birmingham Downtown at UAB. Stakeholders are invited to join on August 20th. Registration required.

We are excited to see what this new year has in store for the [Alabama AHEC Network](#)!



Contact

Data Visualization Diversity Event

When: Wednesday, July 31, 2024 at 2 pm CST

Where: Zoom

About This Event

The [NAO](#) Diversity Committee is hosting representatives of the [Robert Graham Center](#) at the [American Academy of Family Physicians](#) for a webinar exploring structural racism in the primary care workforce.

Specifically, the group will describe Robert Wood Johnson-funded data tools they are developing that they believe AHECs could use to visualize structural racism with a goal of improving diversity in the primary care workforce. They will also be looking for feedback as to how AHECs might anticipate using the tools.

The tools will be grounded in current and historical data on structural racism and primary care workforce development to answer the question 'How, and where, does structural racism depress the development of a diverse primary care workforce?'

Registration

Seizure Recognition & First Aid Certification Training

When: Thursday, August 15, 2024, at 1 pm CST

Where: Virtual

About This Event

The Seizure Recognition and First Aid Certification course formally educates the public on the **Epilepsy Foundation's** approved procedures for recognizing seizures and responding to someone having a seizure.

This course aims to increase the knowledge, skill, and confidence in applying seizure first aid. The first aid procedures in the guide reflect the standard of knowledge and current best practices. This information is presented in a format suited for direct training of the public. Participants who successfully complete the course will receive a **two-year certification**.

Registration



Learning Lupus 2024

When: Monday, August 26, 2024, at 1 pm CST

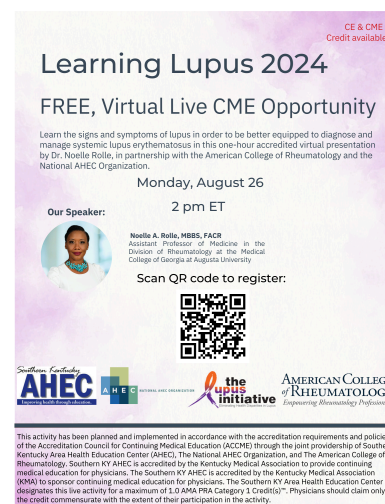
Where: Virtual

About This Event

Join **NAO** and the **American College of Rheumatology** to learn the signs and symptoms of lupus in order to be better equipped to diagnose and manage systemic lupus erythematosus in a one-hour accredited virtual presentation by Dr. Noelle Rolle.

CE & CME Credit available.

Registration



The Economic Impact of Rural Healthcare

When: Wednesday, September 25, 2024, at 12 pm CST

Where: UAB National Alumni Society House, Ballroom, Birmingham, Alabama

About This Program

Since 2020, rural hospitals in Alabama have lost more than \$1.5 billion since the start of the pandemic - more than any other state. According to the **Alabama Hospital Association**, more than a dozen of the state's 51 rural hospitals are at risk of imminent closure due to economic troubles. Doug Brewer, CEO of **Whitfield-Memorial Hospital** in Demopolis, Ala., joins the **Lister Hill Center for Health Policy** to discuss the economic impact of rural hospitals and their importance in our most vulnerable communities.

Registration

Narcan Training

When: Open Enrollment

Where: Online

About This Program

Sign up for the free online Naloxone training program, provided by the **Jefferson County Department of Health**. By gaining the necessary knowledge and abilities to administer Naloxone, you'll be equipped to reverse opioid overdoses and potentially make a life-saving difference.



Registration



VISIT OUR WEBSITE



alahec.org



Visit Our Website

About Alabama AHEC Network



The Alabama AHEC Network is dedicated to recruiting, training, and retaining the Alabama healthcare workforce while increasing diversity among health professionals, broadening the distribution of the health workforce, enhancing the quality of care, and improving health care delivery to rural and underserved populations in Alabama.

The following centers are members of the Alabama AHEC Network and are federally funded HRSA AHEC Programs and nationally recognized Area Health Education Centers: Alabama Statewide Network Program Office, North Alabama AHEC (NAAHEC), East Central Alabama AHEC (ECAAHEC), Black Belt Alabama AHEC (BBAAHEC), Wiregrass Alabama AHEC (WAAHEC), and Delta Alabama AHEC (DAAHEC).