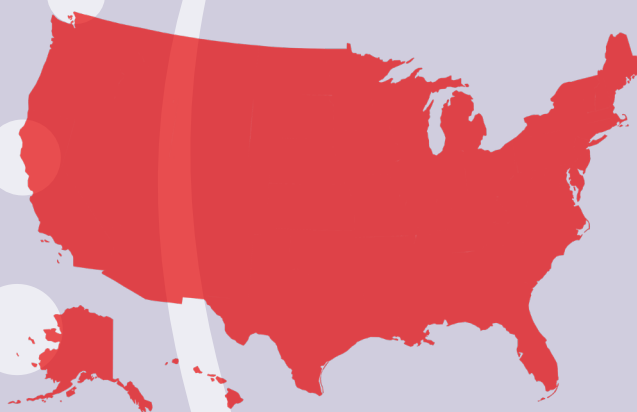


TRAUMATIC SPINAL CORD INJURY

Demographics at a Glance 2024



305,000

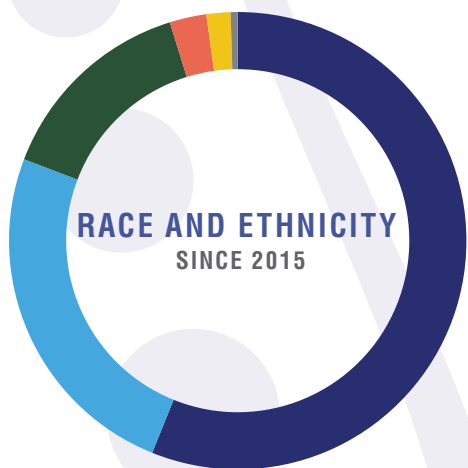
(Range from 257,000 to 388,000)

ESTIMATED PERSONS CURRENTLY LIVING WITH SPINAL CORD INJURY

18,000

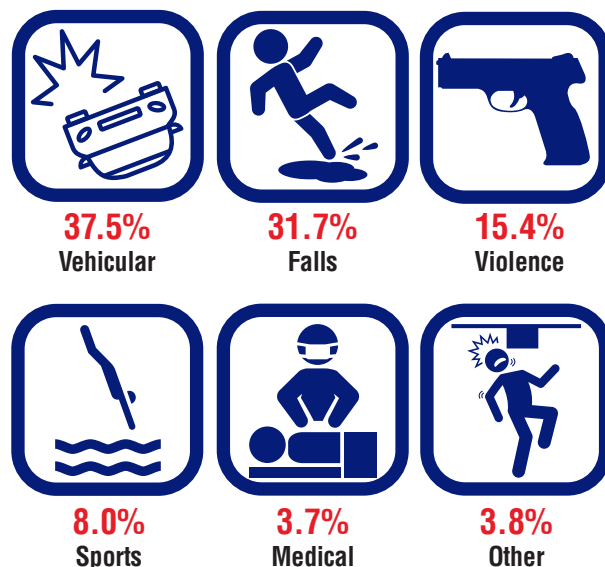
ESTIMATED NEW INJURIES EACH YEAR IN THE UNITED STATES

SEX AT TIME OF INJURY SINCE 2015

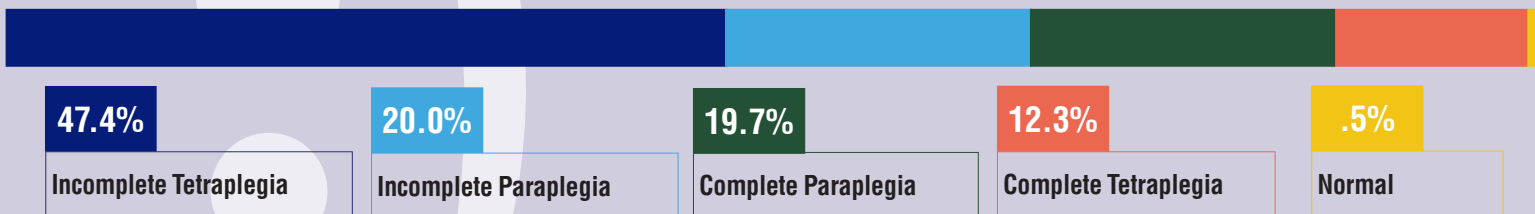


55.5%	Non-Hispanic White
25.0%	Non-Hispanic Black
14.5%	Hispanic
2.6%	Asian
1.9%	Other
.5%	Native American

CAUSES OF INJURY SINCE 2015



NEUROLOGICAL LEVEL AND EXTENT OF INJURY SINCE 2015



© 2024 Board of Trustees, University of Alabama. This is a publication of the National Spinal Cord Injury Statistical Center offering content developed under a grant from the National Institute on Disability, Independent Living, and Rehabilitation Research (NIDILRR grant number 90SIMS0016). NIDILRR is a Center within the Administration for Community Living (ACL), Department of Health and Human Services (HHS). Content does not necessarily represent the policy of NIDILRR, ACL, HHS, and you should not assume endorsement by the Federal Government.

AVERAGE TRENDS OVER TIME		1970s	SINCE 2015
	Age at Injury	29 Years Old	43 Years Old
	Acute Hospital Lengths of Stay	30 Days	19 Days
	Rehabilitation Lengths of Stay	110 Days	37 Days