



# Postpartum Awareness Bracelet Pilot

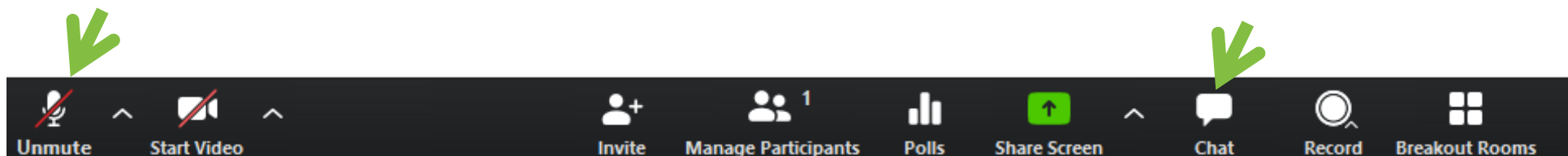
---

May 23, 2024 – Kickoff Updates



# Welcome

- **We will be recording this call to share, along with any slides.**
- Please type your **name** and the **organization** you represent in the **chat box** and send to "Everyone"
- Please click on the three dots in the upper right corner of your Zoom image, click "Rename" and put your name and organization.
- Please also do for all those in the room with you viewing the webinar.
- Attendees are automatically muted to reduce background noise.
- You may enter questions/comments in the "chat" box during the presentation. We will have a Q&A session at the end.
- Slides will be available via email and at <http://www.alpqc.org/initiatives/htn>



# Goals of the Pilot

---

Decrease the **30-day** obstetric-related readmission rate by 20% by increasing early recognition and treatment of postpartum complications

- Increase screening for postpartum patients
- Recognize postpartum complications
- Consult OB/GYN or call the MIST Consultation Line if postpartum complications are suspected
- Educate the patient and family on Post-Birth Complications





# The Bracelets

---

## Postpartum Awareness/I Just Delivered

- Navy Blue / Apple Green Font
- To be given to every patient after delivering a viable infant



## Pregnancy/Infant Loss

- White /Lavender Font
- To be given to every patient who experiences an infant loss

# Patient Education

## WARNING SIGNS OF POST-BIRTH COMPLICATIONS

### CALL 911 IF YOU HAVE:



- Pain in chest
- Obstructed breathing/short of breath
- Seizures
- Thoughts of hurting yourself or your baby

### CALL YOUR DOCTOR IF YOU HAVE:



- Bleeding through 1 pad an hour or large blood clots
- Incision that is not healing
- Red, swollen, or painful legs
- Temperature higher than 100.4°F
- Headache, vision changes



"I HAD A BABY ON [DATE] AND  
I AM HAVING [SYMPTOM]"

TELL 911 OR YOUR  
HEALTHCARE PROVIDER



## SEÑALES DE ADVERTENCIA DE COMPLICACIONES POSPARTO

### LLAME AL 911 SI TIENE:



- Dolor en el pecho
- Respiración obstruida/falta de aliento
- Convulsiones
- Pensamientos de lastimarse a sí misma o a su bebé

### LLAME A SU MÉDICO SI TIENE:



- Sangrado a través de 1 toalla higiénica por una hora o coágulos de sangre grandes
- Incisión que no cicatriza
- Piernas enrojecidas, hinchadas o doloridas
- Temperatura superior a 100.4 °F
- Dolor de cabeza, cambios en la visión



"TUVE UN BEBÉ EL [FECHA] Y  
ESTOY TENIENDO [SÍNTOMA]"

DÍGALE AL 911 O A SU PROVEEDOR  
DE ATENCIÓN MÉDICA



# Patient Survey



After a pregnancy, you may still be at risk for bad physical and mental outcomes. This bracelet has been given to you to help doctors, nurses, and other emergency and healthcare providers recognize potential post-pregnancy health conditions in the event of a medical emergency. We encourage you to wear the bracelet for at least 6 weeks for your health and safety.

Please take a moment to complete the brief survey below.

Are you planning on wearing the bracelet for at least 6 weeks to help identify your risk of post-pregnancy health conditions to doctors, nurses, and other emergency and healthcare providers?

☐ Yes

☐ No

☐ Maybe

Will wearing the bracelet help you feel safer in the event of a medical emergency?

☐ Yes

☐ No

☐ Maybe

Please select the hospital that gave you the postpartum bracelet.

☐ Ascension St. Vincent's Birmingham

☐ Baptist Medical Center South

☐ Brookwood Baptist Medical Center

☐ Huntsville Hospital for Women & Children

☐ Jackson Hospital

☐ UAB Women and Infants

☐ USA Children's & Women's Hospital

☐ Walker Baptist Medical Center

☐ I don't know

☐ Other (please specify):

# Obstetric-Related Readmissions

---

- Survey developed in Qualtrics
- **Will measure 30-day Obstetric-Related Readmission Rates**
- Link will be emailed to the designated contact on the 10<sup>th</sup> of each month
- Baseline reporting will be March, April, and May 2024
- Pilot will last from June – November 2024

# Obstetric-Related Readmissions



Thank you for your participation in the Postpartum Awareness Bracelet Pilot. We appreciate your dedication to improving maternal health outcomes in Alabama. Please take a moment to complete the survey below.

Please enter the name of your facility.



Please enter the name of your facility.

Please select the month for which you are reporting.

March 2024

April 2024

May 2024

June 2024

July 2024

August 2024

September 2024

October 2024

November 2024

Please enter your facility's 30-day obstetric-related readmission rate for the month selected, using percentages with 2 decimal places (example 2.15%).

Are you entering data for another month?

Yes

No







# Collaborations

Emergency Department Buy-In

# How Are We Doing?

---

- Have you met with the Emergency Department Leaders?
- Are there any concerns/feedback?
- What resources can we provide to assist with buy-in?

# Emergency Departments

---

Ask all women ages 15-45 years old “Have you been pregnant in the past year?”

- \*This question should be integrated into your triage assessment /EHR
- \*Post the question in a conspicuous place in the triage area to prompt patients to answer
- \*Consider adding EMR Alerts on patient charts for “Recent Pregnancy within \_\_\_\_\_” (6 weeks/6 months/1 year depending on your OB/GYN guidance)**

# Staff Education Flyers

## Postpartum Awareness Bracelets

### Emergency Department Guide

Ask women ages 15-45 years if they have been pregnant in the last year.

If yes, add postpartum complications to your differential.

Patients who delivered within the last 6-8 weeks are at risk for postpartum complications, including :



- Hemorrhage
- Preeclampsia/Eclampsia
- Infection/Sepsis
- Cardiomyopathy
- Embolism or Stroke
- Mental Health Disorders
- Substance Use Disorder/Overdose

Consult an OB/GYN if postpartum complications are suspected or call the MIST Consultation line at 800-UAB-MIST (800-822-6478)



For more information and resources visit our website: [alpqc.com](http://alpqc.com)

## POSTPARTUM PATIENTS ARE STILL AT RISK FOR COMPLICATIONS 6-8 WEEKS AFTER DELIVERY



Consult an Obstetrician if postpartum complications are suspected, or call the MIST Consultation line at 800-UAB-MIST (800-822-6478)



### About the Postpartum Awareness Bracelet Pilot:

After a pregnancy, patients may still be at risk for severe health complications. These postpartum bracelets have been given to individuals to help doctors, nurses, and first responders recognize potential post-pregnancy health conditions in the event of a medical emergency. Postpartum patients are encouraged to wear the bracelet for at least 6 weeks for their health and safety.

For more information and resources, please visit [alpqc.org](http://alpqc.org)





# Staff Education Flyers

## Consider Postpartum Complications

Patients are still at risk for the following conditions for 6-8 weeks postpartum:

Infection/Sepsis

Preeclampsia/Eclampsia

Hemorrhage

Cardiomyopathy

Embolism or Stroke

Mental Health Disorder

Substance Use Disorder/Overdose

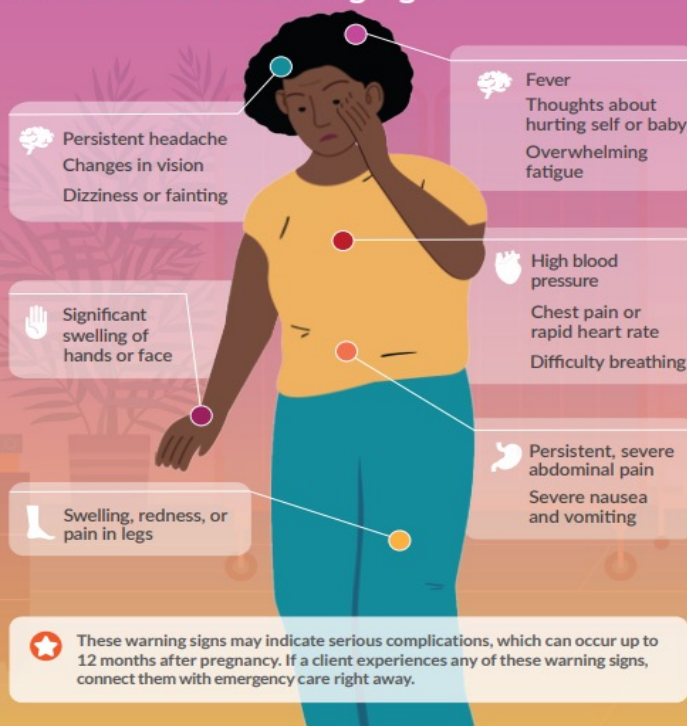
Consult an OB/GYN if postpartum complications are suspected or call the MIST Consultation line at 800-UAB-MIST (800-822-6478)

ALPQC.ORG

## RECOGNIZE POSTPARTUM WARNING SIGNS

Ask: "Are you pregnant, or have you been pregnant in the past 12 months?"

Watch for these warning signs:



For more information, go to: [Urgent Maternal Warning Signs](#).  
Source: [Alliance for Innovation on Maternal Health, ACOG](#).

This poster was supported by the Office on Women's Health (Grant F17R0006030). The views expressed do not necessarily reflect the official policies of the Department of Health and Human Services, nor does mention of trade names, commercial practices, or organizations imply endorsement by the U.S. Government.

**RHNTC**  
REPRODUCTIVE HEALTH  
NATIONAL TRAINING CENTER

# Badge Buddies Are Here!

## Consider Postpartum Complications

Patients are still at risk for the following conditions for 6-8 weeks postpartum:

Hemorrhage

Preeclampsia/Eclampsia

Infection/Sepsis

Cardiomyopathy

Embolism or Stroke

Mental Health Disorder

Substance Use Disorder/Overdose

Consult an OB/GYN if postpartum complications are suspected or call the MIST Consultation line at 800-UAB-MIST (800-822-6478)

[WWW.ALPQC.ORG](http://WWW.ALPQC.ORG)

## Post-Birth Warning Signs

**P**ain in chest

**O**bstructed breathing/shortness of breath

**S**eizures

**T**houghts of hurting yourself or your baby

**B**leeding through 1 pad an hour or passing large blood clots

**I**ncision that is not healing

**R**ed, swollen, or painful legs

**T**emperature higher than 100.4°F

**H**eadache and/or vision changes

[WWW.ALPQC.ORG](http://WWW.ALPQC.ORG)

# Pregnancy/Infant Loss

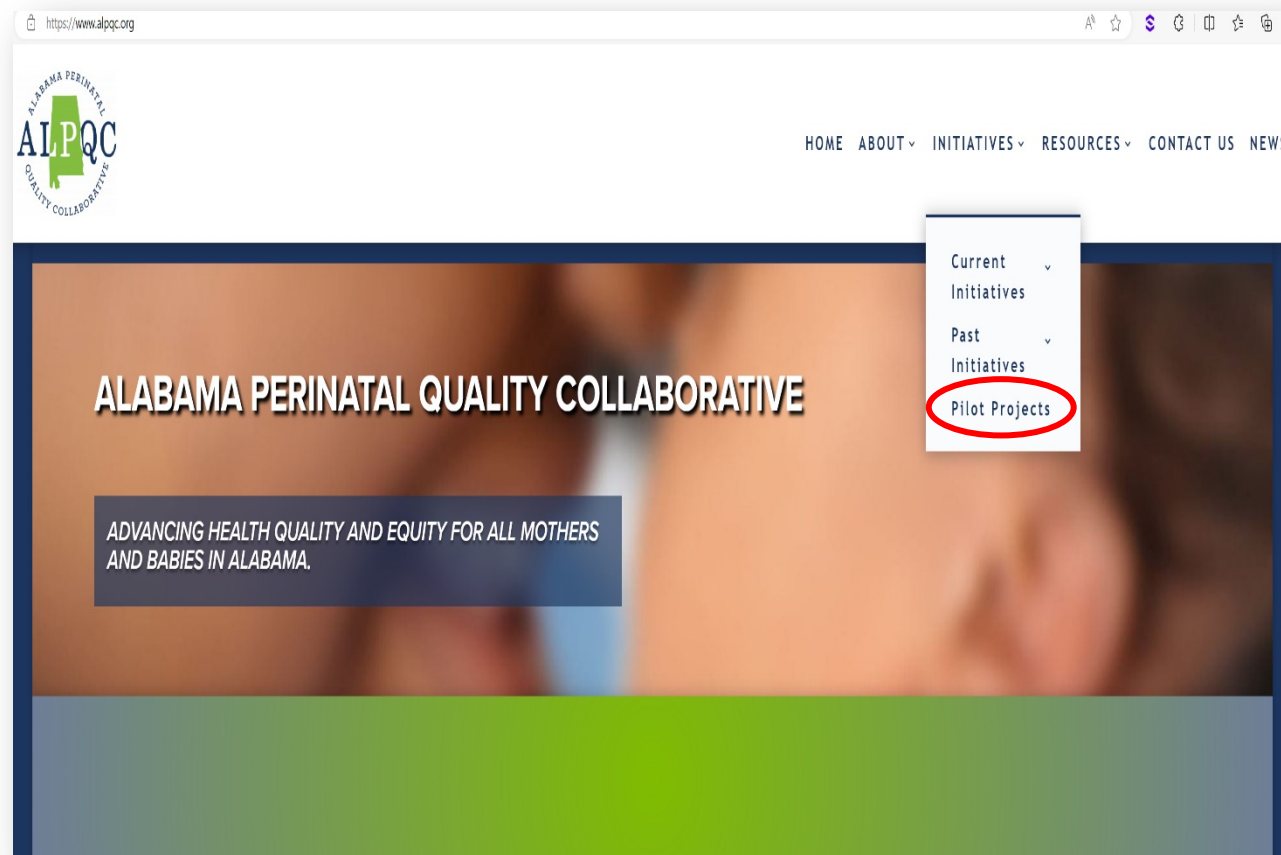
---

- May be distributed by bereavement nurse or other designated RN
- Patient may not present to L&D
- Consider a process for providing Pregnancy/Infant Loss bracelets to patients in clinical or Emergency Department setting
- These patients are STILL AT RISK for postpartum complications
- Post-Birth Patient Education Card
- Resources available through organizations like March of Dimes



# Coming Soon to ALPQC.org

The landing page for the pilot should be released within the next **2 days** and will feature educational resources for providers and patients





# Future Press Release

---

- The University of Alabama at Birmingham's Public Relations team will issue a press release about the postpartum awareness bracelet pilot in June
- Hospitals participating in the pilot will be listed
- The designated RN contact for the pilot should have received an email from Hannah Echols, Media Relations Specialist, to forward to your facility's media relations coordinator
- Hospitals will be sent the PR press release for approval before it is disseminated
- For questions, please contact Hannah Echols, [echolsh@uab.edu](mailto:echolsh@uab.edu) or call 205-704-2939

# Recap

---

- Kickoff date is 6/1/24, goes through November
- Educate discharge staff on Mother/Baby Units **and NICU (infant loss)**
- Disseminate information regarding the pilot to ER providers and staff
- Make sure the bracelets are kept near other discharge supplies
- Remind patients to scan QR codes and answer the survey
- Complete monthly obstetrical-related readmission rate survey

# Q&A

---



Please feel free to come off mute to ask questions or type your questions in the comments box



---

THANK YOU!