

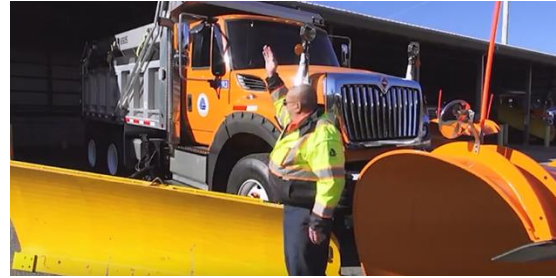
Delaware Build a Better Mousetrap: National Competition Entries

DeIDOT Third Eye (Glen Mumley)

Category: Maintenance Tools and Methods

Contact:

James Pappas
Assistant Director of Performance Management
Delaware Department of Transportation
800 Bay Road
Dover, Delaware 19904
Phone # (302) 760-2288
James.Pappas@state.de.us



Problem Statement:

When driving a snow plow with a wing it is very difficult to see on the right side of the truck. This is a hazard for the driver and those near the snow plow.

Discussion of Solution:

Third Eye, a mirror that mounts on the plow on snowplows with wings to eliminate the blind spot when the wing is raised. This simple idea provides added visibility and safety during snow operations.



Labor, Equipment, & Materials Used:

Third Mirror placed on the wing of the plow.

Cost:

\$20

Savings& Benefits:

Increased visibility for the equipment operation, eliminating the blind spot and increasing situational awareness for better safety for the community.

Equipment Operator Glen Mumley explains the origin and functionality of the Third Eye in this video:
[https://www.youtube.com/watch?v=9SFCTI3H9dY&feature=youtu.be.](https://www.youtube.com/watch?v=9SFCTI3H9dY&feature=youtu.be)

**Delaware T²/LTAP Center
2018 Build a Better Mousetrap Winner!**

**1st Place - National Competition
Maintenance Tools and Methods Category
2018 Build a Better Mousetrap Winner!**

