



## *Residence Hall Fire Safety for People with Disabilities*

Department of Environmental Health & Safety

### Schedule a One on One Meeting with EHS to Discuss Your Needs

Environmental Health & Safety staff are here to help. Contact EHS to schedule a private meeting to discuss your personal needs and ask any questions you may have. Items to discuss could include...

- Evacuation Procedures
- Does your building have a designated area of refuge? Do you know where it's located?
- Do you wish for EHS to notify the fire department/public safety of your condition and location in case there is an emergency and you need rescued?

### Accommodations Obtained Through the DSS Office

#### Room Accommodations

- Do you need a room with an automatic door opener?
- Do you need a room with a private bathroom?
- Will you need strobe lights to warn you of an emergency?
- Do you require air conditioning?

#### Room Location

- Do you wish to have a room on the ground floor?
- Do you need to be in close proximity to the elevator?

#### Additional Accommodations

- Are there available ADA parking spaces within close proximity to your residence hall?

### Disabilities That May Require Special Arrangements Include...

- Hearing Impairments
- Visual Impairments
- Physical Disability/Impairment

Not all disabilities are permanent. If you become injured or ill during your stay at UD and wish to have special accommodations contact the ADA Office. Many of UD's 40 Residence Halls

have the ability to accommodate a wide range of disabilities.

## How to Stay Prepared

- Know two ways out
- Leave a phone close to your bed in case you are unable to escape
- Keep the path to your exit clear so that you can escape quickly
- Notify the Department of Environmental Health & Safety (EHS) so that the fire department can be made aware of your location during a fire emergency.

## Fire Safety Features

On-campus housing is equipped with many life safety features that may not be found in off-campus housing.

- Strobe Lights - are used to warn occupants of a fire emergency in the building. These devices are commonly seen in common areas of the building. However, some ADA rooms are equipped with strobes as well.



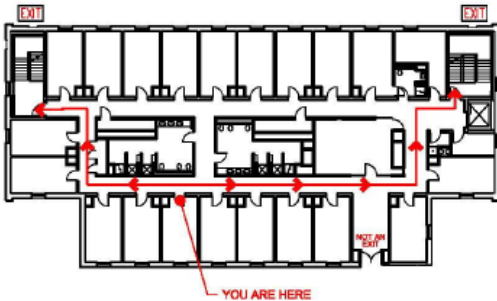
- Area of Refuge – are spaces dedicated to provide space to occupants who can not evacuate in the event of an emergency. Area of refuge can be found in or near the stairwells. Never use the elevator during a fire emergency. Many stairwells are equipped with Blue Light Phones so that you can notify public safety of your location.



- Blue Light Phones -give occupants a direct line to the University Police Dispatch Center. Phones provide UDPD with your exact location in a building. When reporting an emergency always give as much information as possible.



- Emergency Evacuation Maps - are located in the hallways as well as on the back of every dormitory room door. Evacuation maps provide crucial information of what to do during an emergency. Maps include exits, gathering locations, areas of refuge and when available Automated External Defibrillator (AED) locations.



- Fire Sprinklers - are installed in all of the dormitories on campus. Sprinklers are designed to activate only when a fire is present. Sprinklers are the most effective method of controlling or suppressing a fire. Sprinklers activate individually based on temperature, not smoke.



## Contact Information

Department of Environmental Health & Safety

132 General Services Building

(302) 831-8475

Email: [fire-safe@udel.edu](mailto:fire-safe@udel.edu)

**Office of Disability Support Services**

Suite 130 Alison Hall

(302) 831-4643

Email: [dsoffice@udel.edu](mailto:dsoffice@udel.edu)

**Residence Life & Housing**

(302) 831-4663

Email: [reslife-housing@udel.edu](mailto:reslife-housing@udel.edu)