

The mission of WIE is to **promote, mentor, and enable** participation of women students and faculty in engineering studies and in the workplace at the University of Delaware.

RECENT WIE EVENTS

Interviewing for post-docs and professorships

During this workshop, Profs. Jenni Buckley (ME) and Megan Killian (BME) shed their insights on transitioning from a PhD to a postdoc and eventually to a faculty position, with potential stints in industry in between. *Organized by Diana Haidar and Rachel Riley (16 June).*



WIE Ice Cream Social

WIE beat the summer heat with some UDairy Creamery at this annual mixer. *Organized by Jillian Melamed and Maryam Alahmar (15 July).*

WIE FACULTY ADVISORS



Prof. Heather Doty
Mechanical Engineering
(hdoty@udel.edu)



Prof. Rachel Davidson
Civil & Environmental Engr.
(rdavidso@udel.edu)

Smart Women, Smart Power: A conversation with Ellen Kullman



In this webcast viewing, Ellen Kullman, former CEO of DuPont and member of the National Academy of Engineering, spoke about the challenges of leading a company during the Great Recession and how to plant seeds of diversity from the top down. *Co-sponsored by CBE Dept. Organized by Ohnmar Khanal and Camil Diaz (7 Sept).*

UD ADVANCE workshop on **negotiation** in the workplace and beyond



Led by Nancy Houfek and Jane Tucker, this workshop walked participants through the key moves of a successful negotiation. Above, members of WIE demonstrate “power sitting.” (9 Sept).

WIE Welcome Pizza Lunch

WIE welcomed first years at this annual event. Also in attendance were several women faculty from across the COE, who helped score key victories during Trivia. *Organized by Tess Ginley and Camil Diaz (14 Sept).*



COE GRADUATE STUDENT AWARDS

MECHANICAL ENGINEERING (ME)

Ana Ebrahimi received the Graduate student Teaching Assistant Award (May).

CHEMICAL & BIOMOLECULAR (CBE)

Michelle Calabrese won an outstanding student poster award at the American Conference on Neutron Scattering (July).

Molly Koehle received an outstanding poster award at the GRC on Catalysis (June) and 2nd Place in the I&EC Graduate Student Symposium at ACS (Aug).

Jackie Gonzalez and **Amber Hilderbrand** received the CBE Fraser and Shirley Russell Teaching Fellowship (May).

Jackie Gonzalez and **Huong (Hannah) Nguyen** received the Graduate University Fellow Award from UD (May).

Melissa Gordon won the Excellence in Graduate Polymer Research Award at ACS, San Diego (March) and accepted a faculty position at Lafayette College for Jan 2017.

Lisa Sawicki won an outstanding poster award at the GRC for Signal Transduction by Engineered Extracellular Matrices (July).

FACULTY AWARDS

BIOMEDICAL ENGINEERING (BME)

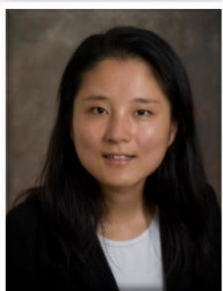
Emily Day was awarded a five-year, \$1.9-million grant from the NIH to study how the design of microRNAs influences their efficacy as therapeutic nanocarriers. (Sept)

Dawn Elliott was reappointed for a second 5-year term as the chair of BME. (July)

CHEMICAL & BIOMOLECULAR ENGR (CBE)

Arthi Jayaraman (CBE, MSE) was one of four lead PIs in a team awarded a 4-year NSF grant through the Designing Materials to Revolutionize and Engineer our Future (DMREF) program for the discovery and manufacture of hybrid inorganic-organic nanostructured objects, or HIONs. (Sept)

NEW COE FACULTY



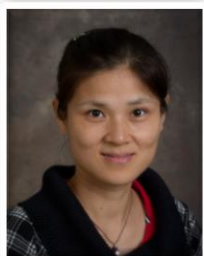
TINGYI GU

joined the Dept. of ECE this fall after completing two separate postdocs at Princeton and Hewlett Packard Labs. She currently

leads the **Integrated Photonics Group**, which seeks to develop optical components from novel materials for various applications, including sensing and high-speed on-chip signal processing.

YUPING ZENG

joined the Dept. of ECE this fall from UC Berkeley, where she completed her postdoctoral work with Chenming Hu



and Ali Javey. Her lab seeks to develop high-speed transistors from novel materials and unconventional fabrication techniques for both high-performance and low-energy applications.

April Kloxin (CBE, MSE) and team received a \$450,000 grant from Susan G. Komen Foundation to research breast cancer recurrence. (Oct)

Millicent Sullivan was appointed as one of two CBE Centennial Junior Professors (July).

CIVIL & ENVIRONMENTAL ENGR (CEE)

Rachel Davidson was appointed as the first associate dean of diversity in the College of Engineering. (Sept)

COMPUTER & INFORMATION SCIENCES (CIS)

Sunita Chandrasekaran received the *IEEE Computer Society TCHPC Award for Excellence for Early Career Researchers in High Performance Computing*. (Nov)

Lori Pollock and team won \$300,000 from the NSF to integrate computational reasoning into undergrad STEM courses. Pollock was also appointed as the new Alumni Distinguished Professor in CIS. (Sept)

Cathy Wu and UD collaborators received \$260,000 from the NIH to continue their work on using big data for precision medicine, as part of a multi-institutional grant totals \$8 million. (Aug)

ELECTRICAL & COMPUTER ENGR (ECE)

Hui Fang was named the David L. and Beverly J.C. Mills Chair in ECE. (July)

MATHEMATICAL SCIENCES (MATH)

Nayantara Bhatnagar received an NSF Career Award to model phase transitions. (Oct)

MATERIALS SCIENCE & ENGR (MSE)

Xinqiao Jia and team received a 5-year grant from the NIH to create tissue model of human vocal cords. (June)

Kristi Kiick (MSE, BME) and **Millicent Sullivan** (CBE) were awarded a \$1.4 million grant from the NIH to engineer new biomaterials for chronic wound repair. (May)

Stephanie Law was the first woman to receive the North America Molecular Beam Epitaxy Young Investigator Award. (Oct)

WIE GRADUATE STEERING COMMITTEE

BME

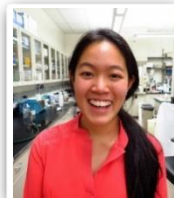


Rachel Riley
(edelstr@udel.edu)



Jillian Melamed
(jmelamed@udel.edu)

CBE



Camil Diaz (Co-Chair)
cacciaz@udel.edu



Ohnmar Khanal
(okhanal@udel.edu)

CEE



Dong Wang
(derawang@udel.edu)



Maryam Alahmar
(malahmar@udel.edu)

CIS



Xinxin Qu
(qux@udel.edu)



Moumita Bhattacharya
(moumitab@udel.edu)

ECE



Jayasree Gogineni
(gogineni@udel.edu)



Hoda Aghaei Khouzani
(hoda@udel.edu)

ME



Diana Haidar
(dhaidar@udel.edu)



Nicole Ray
(nray@udel.edu)

MSE



Theresa Ginley (Chair)
(tginley@udel.edu)



Nairiti Sinha
(sinha@udel.edu)