

The mission of WIE is to **promote, mentor, and enable** participation of women students and faculty in engineering studies and in the workplace at the University of Delaware.

RECENT WIE EVENTS

Get to Know Your Faculty

Professors **Arthi Jarayaman** (CBE, MSE) and **Yuping Zeng** (ECE) met with engineering graduate students and postdocs to share their insights on navigating academia, from honing their communication skills as rising grad students, to shaping successful research programs as young faculty, and learning how to mentor and manage a growing, diverse team. *Organized by Jayasree Gogineni and Ohnmar Khanal (24 Oct).*



AWM Happy Hour

WIE teamed up with UD's Association for Women in Mathematics (AWM) to host a happy hour at Deer Park Tavern, bringing together UD grad students across STEM disciplines. *Coordinated by Moumita Bhattacharya (17 Feb).*

WIE FACULTY ADVISORS



Heather Doty
Mechanical Engineering
(hdoty@udel.edu)



Rachel Davidson
Associate Dean
(rdavidso@udel.edu)

Fall Coffee Break



COE graduate students and faculty gathered in DuPont Hall to enjoy desserts, coffee, hot cocoa, and good company. *Organized by Hoda Aghaei Khouzani and Xinxin Qu (10 Nov)*

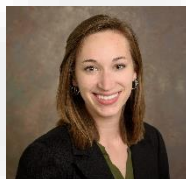


Screening of Hidden Figures

The College of Engineering (COE) sponsored a screening of the Academy Award-nominated film, *Hidden Figures*, which brings life to the untold story of a group of pioneering African American women and their involvement in the early days of the NASA space program. *(23 March)*

NEW WIE COMMITTEE MEMBER

Danielle Valcourt is a 2nd year PhD candidate in BME from the University of Notre Dame. Her work with Prof. Emily Day at UD focuses on nanotechnology-based treatments of triple-negative breast cancer. As a new WIE rep, she hopes to promote the interests of fellow women engineers for generations to come. Outside of grad school life, Danielle enjoys soccer, tennis, dance, sketching, and travel.



COE GRADUATE STUDENT AWARDS

CHEMICAL & BIOMOLECULAR ENGINEERING (CBE)

Ru Chen was chosen as a speaker for the Inaugural NAI Student Innovation Showcase on April 7 during the Sixth Annual Conference of the National Academy of Inventors (NAI).

Julie Hipp was elected as the student representative to the NIST Center for Neutron Research User Group (NUG) Executive Committee (Feb).

CIVIL & ENVIRONMENTAL ENGINEERING (CEE)

Kokeb Abera was awarded a graduate fellowship from the Center for Advanced Infrastructure and Transportation (CAIT) in August.

COMPUTER & INFORMATION SCIENCES (CIS)

Preetha Chatterjee and **Lisa Ketcham** were recognized with the Lauri Pfeffer Shinn Award.

ELECTRICAL & COMPUTER ENGINEERING (ECE)

Hoda Aghaeikhousani received the University of Delaware Doctoral Fellowship Award for the 2017-2018 academic Year (March).

MECHANICAL ENGINEERING (ME)

Cheng Peng was selected for the University of Delaware Graduate Fellow Award (March).

Sushant Veer received the University of Delaware Doctoral Fellowship Award for the 2017-2018 academic year (March).

FACULTY AWARDS

BIOMEDICAL ENGINEERING (BME)

Megan Killian was chosen as a scholar for the Interdisciplinary Rehabilitation Engineering Career Development Program (IREK12) in Movement and Rehabilitation Sciences at Northwestern University for her research on identifying biological factors that facilitate regeneration of tears in rotator cuffs. (Nov)

Emily Day was one of four faculty to receive a University of Delaware Research Foundation grant for her work on investigating light-triggered nanoparticles as a minimally invasive route for breast cancer therapy. In this approach, near-infrared light would be used to remotely activate nanoparticles to release singlet oxygen, a high-energy, reactive form of oxygen that could destroy cancer cells locally in a targeted manner. (Feb)

NEW COE FACULTY

PARAMITA
MONDAL

*Associate
Professor of
Civil and
Environmental
Engineering*

Prior to joining UD earlier this year, Paramita Mondal served as an Associate Professor in Civil and Environmental Engineering at the University of Illinois, Urbana-Champaign. Her research investigates the relationship between the processing and performance of cement-based construction materials (such as concrete) through both experimental studies and computational modeling. Her lab seeks to develop novel, "green" alternatives to cement with improved structural performance and longevity by harnessing nanotechnology, multi-scale material characterization, and biomimicry.

COMPUTER & INFORMATION
SCIENCES (CIS)

Hagit Shatkay (jointly BME) received a \$100,000 grant from the NSF Early-concept Grants for Exploratory Research (EAGER) Program for her work on modeling and predicting heart disease. (Nov)

Michela Taufer and co-authors published a paper in *Science* on how to improve the reproducibility of computational research. Taufer was also recently elected as the general chair of the 2019 International Conference for High Performance Computing, Networking, Storage and Analysis, sponsored by Association for Computing Machinery and IEEE. (Jan)

Cathy Wu was named a 2016 Highly Cited Researcher by Thomson Reuters, a recognition given to the top one percent of researchers who are most cited in their field for a given year. (Jan)

MECHANICAL ENGINEERING (ME)

Jill Higginson (jointly BME) and two other UD faculty were awarded a 3-year grant from the National Robotics Initiative of the NSF for their interdisciplinary collaboration on Goal-Oriented, subject Adaptive, robot-assisted Locomotor Learning (GOALL) for assisting patients in post-stroke rehabilitation. (Oct)

Dustyn Roberts and Jenni Buckley received a best paper award at the First International Symposium on Academic Makerspaces (ISAM), at MIT in November for their work on how design studios and "makerspaces" can be integrated into undergraduate education, offering valuable hands-on learning opportunities and fabrication resources for students.

Jenni Buckley was also one of three faculty to receive a diversity research grant from UD's Center for the Study of Diversity for her work entitled, "Assessment of Student Culture for Women and URGs in the UD College of Engineering." (Feb)

WIE GRADUATE
STEERING COMMITTEE

BME

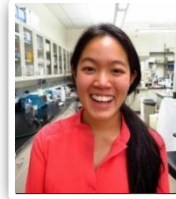


Rachel Riley
(edelstr@udel.edu)

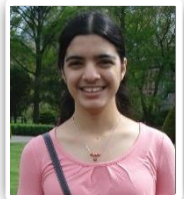


Jillian Melamed
(jmelamed@udel.edu)

CBE



Camil Diaz (Co-Chair)
caddiaz@udel.edu



Ohnmar Khanal
(okhanal@udel.edu)

CEE



Dong Wang
(derawang@udel.edu)

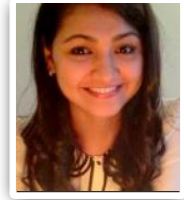


Maryam Alahmar
(malahmar@udel.edu)

CIS



Xinxin Qu
(qux@udel.edu)



Moumita Bhattacharya
(moumitab@udel.edu)

ECE



Jayasree Gogineni
(gogineni@udel.edu)



Hoda Aghaei Khouzani
(hoda@udel.edu)

ME



Diana Haidar
(dhaidar@udel.edu)



Nicole Ray
(nray@udel.edu)

MSE



Theresa Ginley (Chair)
(tginley@udel.edu)



Nairiti Sinha
(sinha@udel.edu)