



# Women in Engineering Graduate Steering Committee

September, 2013

102 Dupont Hall • Newark, DE 19716 • USA  
[www.engr.udel.edu/wie](http://www.engr.udel.edu/wie) • (302) 831-2401

## INSIDE THIS ISSUE

- 1 Our Mission
- 1 Upcoming Events
- 2 Your 2013-2014 Committee
- 3 WIE Calendar of Events
- 4 WIE Can! Nominations, achievements, and awards

## Our Mission

*Our goal is to promote, mentor, and enable the participation of women students and faculty in engineering studies and the workplace. WIE provides activities that bring together female and male engineering students, faculty, and administrators -- as well as external representatives from industry, government agencies, and other academic institutions -- with the goal of promoting a healthy institutional climate for all members of the engineering community at UD.*

## Upcoming Events

### *Fall Coffee Break -- October 18*

Tired of doing experiments or reading articles? Need to refresh yourself? Come and join us at the coffee break event of this fall on October 18<sup>th</sup> in the lobby of DuPont Hall. You can meet with new graduate students and make friends while enjoying a variety of hot beverages and desserts.



### *Workshop: Efficient Work Practices for Faculty and Graduate Students -- November 15*

Dr. Jennifer McConnell, associate professor of Civil and Environmental Engineering, will lead a workshop on 'Efficient Work Practices for Faculty and Graduate Students' based on her experiences with the Summer Faculty Success Program that she participated this past summer.

Please join us from noon - 1:00 in 302 DuPont Hall to learn how to increase your working efficiency. We will provide lunch.

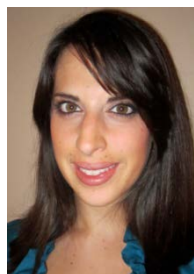
## Your 2013 – 2014 Committee

*"Graduate students,  
mentors and scientists  
fostering success."*



<http://www.engr.udel.edu/wie>

Our goal is to promote and mentor graduate women in the College of Engineering at UD. Please do not hesitate to contact us with any questions you might have.

*Biomedical Engineering*

Jilian Melamed



Rachel Edelstein

*Chemical & Biomolecular Engineering*

Bahar Ipek



Michelle Calabrese

*Civil & Environmental Engineering*

Mengyin Yao



Susan Yi

*Computer Science*

Boyu Zhang

Priscilla Moraes  
(Chair)*Electrical & Computer Engineering*

Luisa Fernanda



Qi (Gill) Wang

*Materials Science & Engineering*

Danning Zhang



Liang Gong

*Mechanical Engineering*

Amy Bucha



Hatice Sas

**Pam Cook**

*Mathematical Sciences  
Chemical Engineering  
Associate Dean of  
Engineering*  
[cook@math.udel.edu](mailto:cook@math.udel.edu)

**Rachel Davidson**

*Civil and Environmental  
Engineering*  
[rdavidso@udel.edu](mailto:rdavidso@udel.edu)

**Heather Doty**

*Mechanical Engineering  
and UD ADVANCE*  
[hdoty@udel.edu](mailto:hdoty@udel.edu)

**WIE Faculty  
Advisors**

## WIE Calendar of Events

Sep 6 <sup>th</sup> At Noon	New Graduate Student Welcome Pizza Lunch	CCM 106
Oct 18 <sup>th</sup> 3:30 - 5pm	Fall Coffee Break	DuPont Lobby
Nov 15 <sup>th</sup> At noon	Workshop: Efficient Work Practices for Faculty and Graduate Students	DuPont 302

## WIE Can! Nominations, achievements, and awards



### UD's Kloxin selected 2013 Pew Scholar in the Biomedical Sciences!

Kloxin has been selected as a Pew Scholar just months after she was awarded National Science Foundation (NSF) Faculty Early Career Development Award

April Kloxin, a University of Delaware chemical and biomolecular engineer whose research is pushing the boundaries of what is known about fibrosis, has been named a 2013 Pew Scholar in the Biomedical Sciences by the Pew Charitable Trusts.

As part of the award, Kloxin will receive \$240,000 in unrestricted funds over four years to investigate the progression of fibrosis, a condition that occurs when excess connective tissue builds up in the body, resulting in increased tissue stiffness, and ultimately, loss of function.

An experienced researcher, the scholarship builds upon Kloxin's current work under a National Science Foundation Faculty Early Career Development Award announced in April.

Please join us in congratulating April Kloxin for her consecutive achievements!

*Excerpt from the UDaily, an online news source for the University of Delaware, announcement by Karen B. Roberts (Photo by Evan Krape) on June 13, 2013. For the full article please visit: <http://www.udel.edu/udaily/2013/jun/kloxin-pew-scholar-061313.html>*



### Pioneering Polymer Research

Delaware Bio selects UD's Kiick to receive Academic Research Award

University of Delaware professor Kristi Kiick is currently developing a range of novel hydrogels in order to improve the treatment of cardiovascular conditions as well as the delivery of antibodies to protect against toxins.

For her work, Kiick, a professor of materials science and engineering and biomedical engineering, received the 2013 Academic Research Award at the Delaware BioScience Association's annual awards gala on May 22<sup>nd</sup>.

Please join us in congratulating Professor Kiick for this excellent award!

*Excerpt from the UDaily, an online news source for the University of Delaware, announcement by Sarah E. Meadows on May 6, 2013. For the full article please visit: <http://www.udel.edu/udaily/2013/may/kiick-bio-award-050613.html>*



## Chemical and Biomolecular Engineering



**Alexandra Bayles**, senior student, was one of four UD students who won the prestigious NSF Graduate Research Fellowships. Alexandra will attend graduate school in chemical engineering at the University of California, Santa Barbara.

Congratulations, Alexandra!

## Mechanical Engineering

**Jennifer Buckley**, assistant professor of mechanical engineering, received UD's Excellence in Advising and Mentoring Award, based on students' nominations. She will be honored with an inscribed brick in Mentors' Circle.

Congratulations, Professor Buckley!



## Civil Engineering



**Laura Black**, a doctoral candidate in Civil Infrastructure Systems, was recently selected to participate in the Eno Center for Transportation 21st annual Leadership Development Conference (LDC). Laura is one of twenty graduate students selected nationwide to attend the conference and only the second from the University of Delaware.

**Elisa Kropat**, a Master's student in Transportation, was one of four graduate students selected nationwide for the Public Lands Transportation Scholars Program. The program is a partnership of the Eno Center for Transportation and The Paul S. Sarbanes Transit in Parks Technical Assistance Center (TRIPTAC).



## Excellence in Teaching

Hui Fang received the 2013 College of Engineering Excellence in Teaching Award

The Dean of Engineering presented Hui Fang, Assistant Professor of Electrical and Computer Engineering, the 2013 College of Engineering Excellence in Teaching Award at the COE 2013 Convocation ceremony. This award is given to a faculty member who demonstrates true excellence in teaching. Dr. Fang was nominated for this honor by students and recent graduates of the College of Engineering.

Please join us in congratulating Professor Fang for this award!



## Unidel Fraser Russell Chair

Holly Michael has been named the Unidel Fraser Russell Chair for the Environment

Holly Michael, assistant professor in the Department of Geological Sciences in the College of Earth, Ocean, and Environment with joint appointments in the Department of Civil and Environmental Engineering, the Department of Geography and the School of Marine Science and Policy, has been named the Unidel Fraser Russell Chair for the Environment. Dr. Michael has received national attention for her work in coastal groundwater and its significance for understanding and protecting the environment.

Please join us in congratulating Professor Michael for her new title!

*Excerpt from the UDaily, an online news source for the University of Delaware, on August 14th, 2013. For the full article please visit: <http://www.udel.edu/udaily/2014/aug/chairs-081413.html>*

### WIE Graduate Steering Committee

102 Dupont Hall  
Newark, DE 19716

Phone:  
302-831-2401

Fax:  
302 831-8179

Website:  
[sites.udel.edu/wie](http://sites.udel.edu/wie)