

## FACULTY AWARDS AND NEWS

### BIOMEDICAL ENGINEERING (BME)

**Emily Day** received an R01 grant from National Institute of Health (NIH) for breast cancer treatment research. She also received a QED grant from the University City Science Center in Philadelphia.

**Megan Killian** received an NSF CAREER award aimed at understanding tendon attachments during postnatal growth.

### CHEMICAL AND BIOMOLECULAR ENGINEERING (CBE)

**LaShanda Korley** was named a Fellow of the American Institute for Medical and Biological Engineering (AIBME).

**Marianthi Ierapetritou** became the first woman to give the Professor Roger Sargent Lecture at Imperial College.

### COMPUTER AND INFORMATION SCIENCES (CIS)

**Cathy Wu** and **Cecilia Arighi** were ranked by the Web of Science Group in the top 1% of authors cited by peers for their research in bioinformatics.

### ELECTRICAL AND COMPUTER ENGINEERING (ECE)

**Chengmo Yang** was awarded \$240,000 from the Semiconductor Research Corporation for research on neural networks.

**Tingyi Gu** was awarded \$55,010 from the Department of Homeland Security (DHS) for research on sensors for screening shipping containers.

### MECHANICAL ENGINEERING (ME)

**Jenni Buckley** was selected for the 2020 UD Excellence in Scholarly Community Engagement Award for excellence in engaged teaching, research, and service.

### MATERIALS SCIENCE AND ENGINEERING (MSEG)

**Kristi Kiick** was named a Fellow of the National Academy of Inventors (NAI) for her work on creating and facilitating outstanding inventions.

**Stephanie Law** received the Peter Mark Memorial Award from the American Vacuum Society.

**LaShanda Korley** received the NOBCChE Loyd N. Ferguson Young Scientist Award for excellence in Research.

## WIE OUTREACH

WIE continued its work with the local community for a third consecutive year through



its educational outreach program at the Serviam Girls Academy in Wilmington conducted over several weeks. The outreach program involved weekly sessions introducing different engineering disciplines, followed by a hands-on activity led by volunteers from respective departments. In the enrichment program, volunteers



tutored school girls in various STEM related subjects in their curriculum. At the end of the

Serviam Outreach Program, school students visited the UD campus, the engineering buildings and facilities.

*Organized by Elahe Ganji and Iflah Laraib (Nov 2019 to Jan 2020)*

## WIE GRADUATE STEERING COMMITTEE

BME

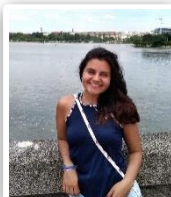


Jamie Benson



Meghan Kupratitis

CBE



Natalia Rodriguez



Priyanka Ketkar

CEE



Grace Ashley



Maryam Shaygan

CIS



Yidan Hu

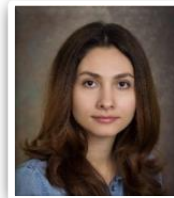


Haoran Wei

ECE



Ishaani Priyadarshini



Fateme Hosseini

ME



Kelsey Neal



Elahe Ganji  
(Chair)

MSEG



Nicole Halaszynski



Iflah Laraib  
(Co-Chair)

The mission of WIE is to **promote, mentor, and enable participation of women students and faculty in engineering studies and in the workplace at the University of Delaware.**

## RECENT WIE EVENTS

### Fall Coffee Hour

WIE concluded the Fall semester with a college-wide coffee hour attended by a mix of graduate students, post-docs, and faculty from different departments in the College of Engineering. About 90 attendees enjoyed fun activities during the event. Pies, desserts, hot chocolate, and coffee were served alongside great conversations.

*Organized by Yidan Hu, Ishaani, Priyadarshini, and Grace Ashley (Nov 22, 2019)*

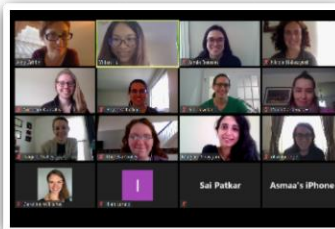


### Mindfulness Workshop

To promote mental wellness, and support the wellbeing of CoE graduate students and post-docs, WIE hosted a virtual (due to

COVID-19) mindfulness workshop led by UD's Associate professor in the Department of Psychological and Brain Sciences, Dr. Amy Griffin. Attendees practiced guided meditation and learned mindfulness strategies for their daily lives.

*Organized by Nicole Halaszynski, Jamie Benson, and Meghan Kupratis (Apr 14, 2020)*



### Write On-Zoom

WIE hosted three virtual write on-site sessions via zoom throughout April to help CoE graduate students accomplish their writing and research goals while working from home due to COVID-19. Graduate Students and post-docs across CoE got together with WIE representatives weekly, to write and work any projects.

*Organized by Kelsey Neal, Jamie Benson, Iflah Laraib, and Elahe Ganji (Apr 16, 23, and 30, 2020)*

graduate studies in the field of Engineering: Challenges, opportunities and application processes.

*Panelists: Priyanka Ketkar, Kelsey Neal, Nicole Halaszynski, Jamie Benson, and Iflah Laraib, Elahe Ganji (Apr 27, 2020)*

## COE GRADUATE STUDENT AWARDS

### BIOMEDICAL ENGINEERING

**Meghan Kupratis** received a Society of Tribologists and Lubrication Engineers Jeanie S. McCoy Fellowship.

**Mackenzie Scully** received Honorable Mention in the NSF-Graduate Research Fellowship Program.

**Danielle Valcourt** received the Best Doctoral Thesis Award

**Grace McIlvain** received the Rising Star Award

### CHEMICAL AND BIOMOLECULAR ENGINEERING

**Jennifer Mills** received a graduate fellowship from NASA's Delaware Space Grant.

### CIVIL AND ENVIRONMENTAL ENGINEERING

**Patricia Hurley** received the National Science Foundation Graduate Research Fellowship.

**Danxui Xin** received the University Dissertation Fellowship Award.

**Cuijuan (June) Feng** received the Hagerty Environmental Graduate Award

### MECHANICAL ENGINEERING

**Elahe Ganji** received the 2020 UD Doctoral Fellowship Award.

### MATERIALS SCIENCE AND ENGINEERING

**Iflah Laraib** received the Chairperson's Outstanding Graduate Student Award.

**Yuejing Wang** received the Outstanding Graduate Student Research Award.

**Nicole Halaszynski** received the Outstanding Graduate Student Teaching Award.

**Jill Cleveland** and **Joanne Norris** received the Outstanding Graduate Student Service Award.

**Olivia George** received the University Doctoral Fellowship Award 2020.

## WIE FACULTY ADVISORS



**Heather Doty**  
Mechanical Engineering  
(hdoty@udel.edu)



**Pam Cook**  
Mathematical Sciences  
&  
Chemical Engineering  
(cook@math.udel.edu)



**Hui Fang**  
Electrical and Computer  
Engineering  
(hfang@udel.edu)

## SWE WITH WIE GRADUATE PANEL

In collaboration with UD's Society of Women Engineers (SWE), representatives of WIE participated in a virtual Graduate Student Panel to answer questions of undergraduate women engineers about pursuing