

Redding Consortium for Educational Equity

Social Drivers of Health and Education Landscape Analysis

Full Body Meeting | December 11, 2024

Introduction: AIR



**Advancing Evidence.
Improving Lives.**

Founded in 1946, the American Institutes for Research (AIR) is a non-profit, non-partisan organization that is passionate about improving education, health, and workforce outcomes in the U.S. and around the world.

Our mission is to generate and use rigorous evidence that contributes to a better, more equitable world.



Introduction: Our Team



Dr. Orrin Murray
Senior Advisor
Overall Quality Assurance



Dr. Trent Sharp
Project Director



Visha Patel
Deputy Director



**Dr. Nastaran
Pourebrahim**
Spatial Analytic Lead



**Dr. Nora
Gannon-Slater**
Senior Advisor
Quantitative Analyses



Dr. Lilliana Carrera
Co-Lead Qualitative
Data Collection



**Jasmine
Davis-Randolph**
Co-Lead Qualitative
Data Collection



Emma Stein
Researcher
Qualitative Support

Introduction: Defining Landscape Analysis



Education Needs Assessment

Focused on resources, experiences, and outcomes inside schools and districts.



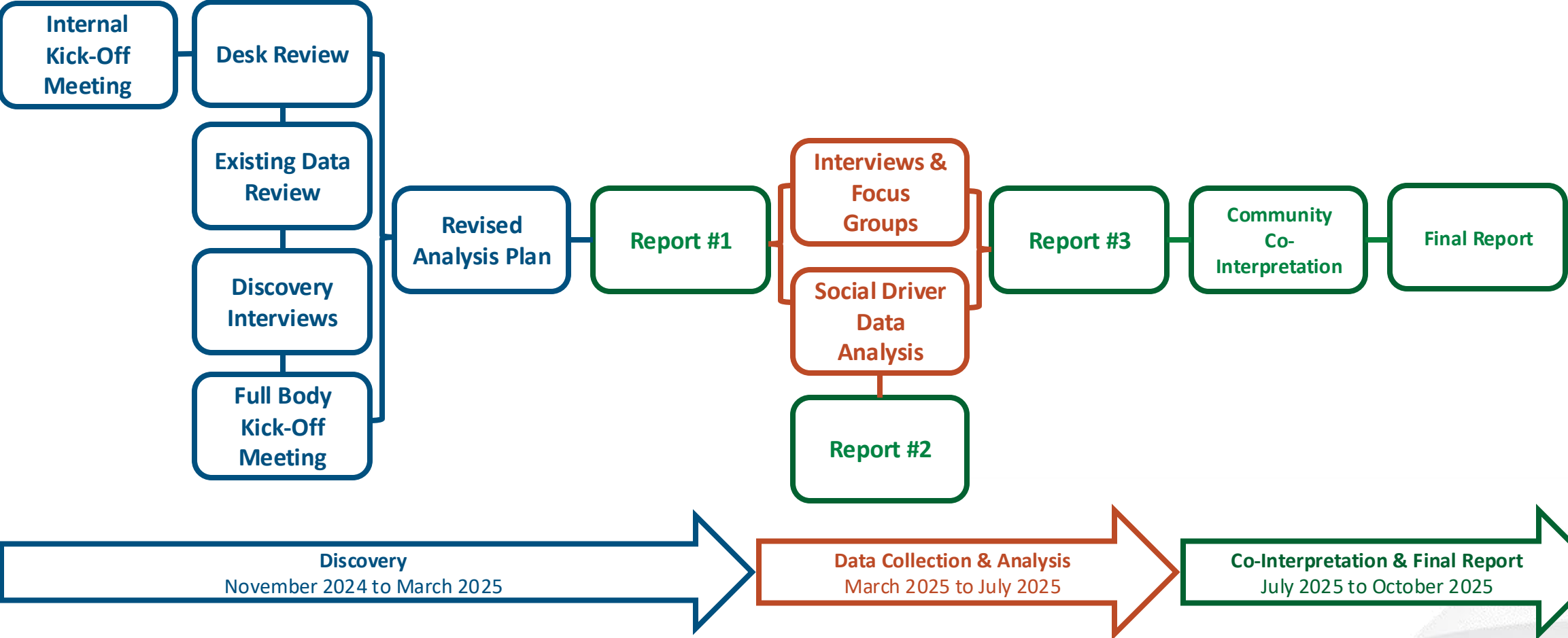
Social Drivers of Health and Education

Landscape Analysis
Focused on the factors outside of schools and things that positively and negatively impact of students and families.

Introduction: Our Goals

1. Customize our approach to unique context of the city of Wilmington and northern New Castle County.
2. Build on the good work that has already been done.
3. Make sure that the community is meaningfully involved in data collection and interpretation.
4. Provide useful data and insights to the subcommittees as they develop the redistricting plan.

Overview: Project Phases and Timeline



Overview: Discovery



Desk review. What have previous studies and reports found?



Existing data review. What does the existing data tell us about the social drivers of health and education across different communities?



Initial interviews. What have we learned from previous efforts and what are the implications for this landscape analysis?



Revised analysis plan. How do we need to adjust our approach to the landscape analysis to fit the local context?

Overview: Data Collection and Analysis



Interviews and focus groups. Across different communities, what are the lived experiences of students, families, community members, and frontline staff?



Social driver data analysis. How do social driver of health and education vary across different communities?



Participatory Action Research Team. What else is important to know?

Overview: Reporting and Co-Interpretation



Phased reports. What are we learning as we progress through the landscape analysis and how do we need to adjust our approach?



Co-interpretation. What insights stand out to community members and what additional details should we include in the final report?



Final report. What have we learned about the social drivers of health and education and what are the implications for the redistricting plan?

Overview: Co-Interpretation



Phased reports. What are we learning as we progress through the landscape analysis and how do we need to adjust our approach?

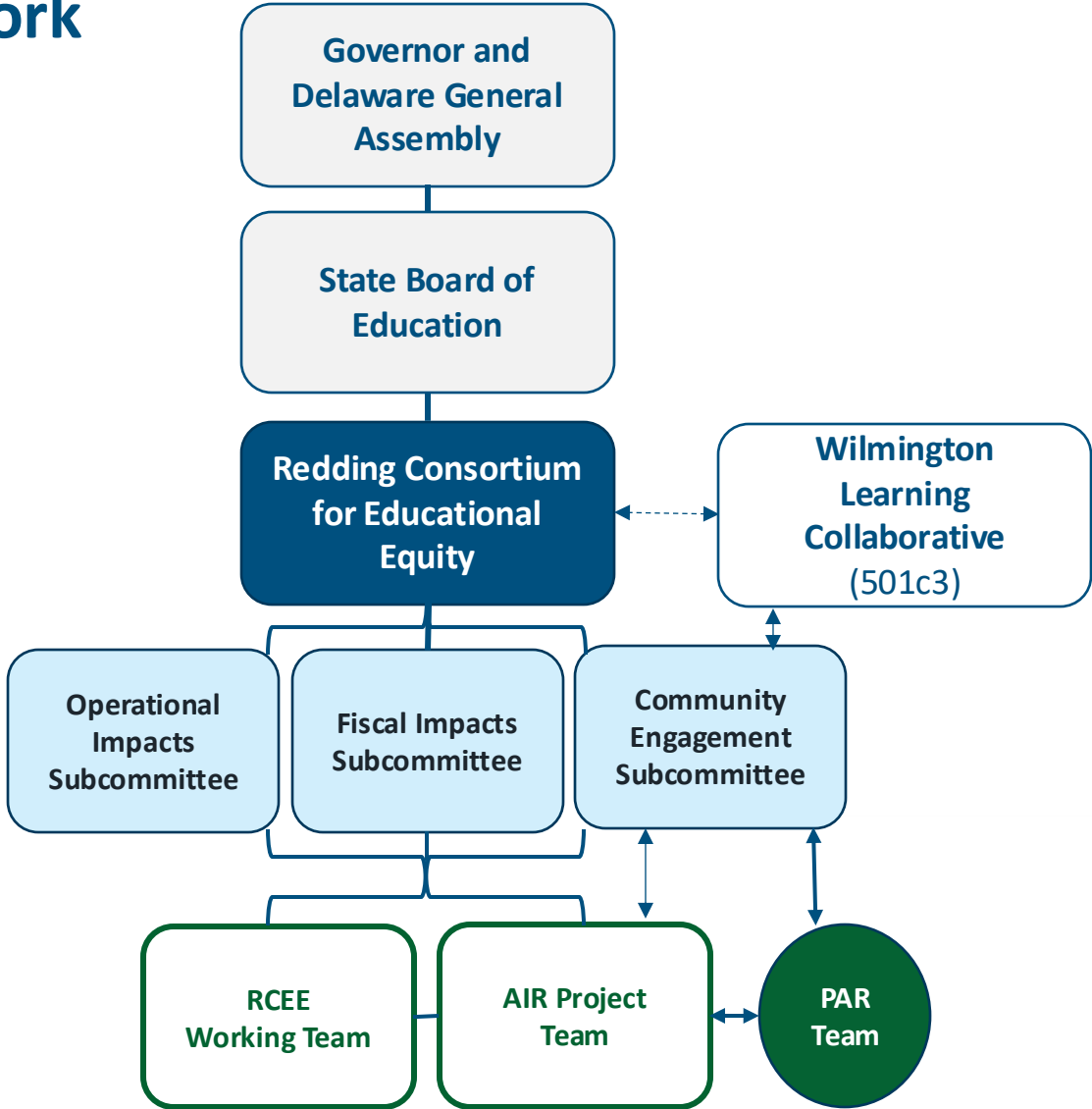


Co-interpretation. What insights stand out to community members and what additional details should we include in the final report?

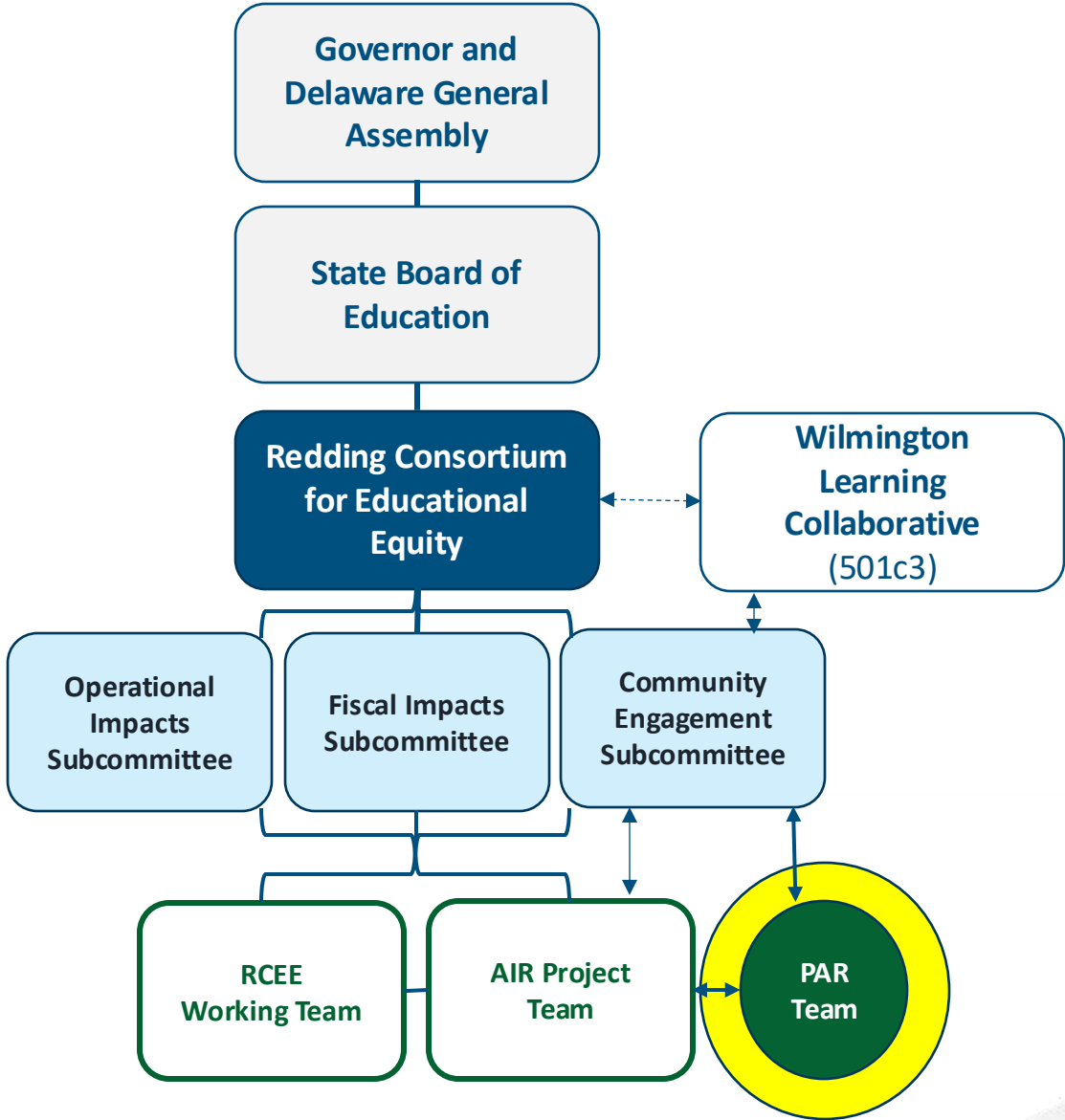


Final report. What have we learned about the social drivers of health and education and what are the implications for the redistricting plan?

Overview: Project Network



Overview: Participatory Action Research Team



Overview: Project Teams and Membership

1

On-going check-ins and logistical support (e.g. scheduling, introductions, etc.)

- Raye Jones-Avery
- Supt. Dorrell Green
- Shelley Rouser
- Paulette Gaddy
- Deputy Sec. Cora Scott
- Alaina Robinson

2

Regular progress updates, alignment and strategy support, and vetting content and approaches prior to RCEE full body or community engagement

- Senator Lockman
- Rep. Chukwuocha
- Raye Jones-Avery
- Supt. Dorrell Green
- Shelley Rouser
- Paulette Gaddy
- Deputy Sec. Cora Scott
- Matt Denn
- Alaina Robinson
- Kelly Sherretz
- Haley Burns
- Sub Committee Co-Chairs (as needed)

3

Bi-monthly progress updates and report presentations.

- RCEE Subcommittees
- RCEE Full Body

Overview: Project Crosswalk

Social Drivers of Health and Education Landscape Analysis

AIR will examine broader ecosystem and lived conditions that impact students and families outside of school.

Examples of social drivers include:

- Housing instability
- Healthcare
- Food insecurity
- Family instability
- Wraparound support access
- Community violence
- Economic opportunity
- Transportation

Redistricting Subcommittees and 13+ Stipulations

Determining Redistricting Approach

1. Redraw district boundaries

Community Engagement Subcommittee

1. Implications for educators, administrators
2. Engagement of educators, staff, parents, district personnel, and community members
3. Assessment of educational needs and resources required
4. Directives for improving secondary education
5. Process for monitoring and evaluation

Operational Impact Subcommittee

1. Orderly and minimally disruptive reassignment
2. Permit students to continue attendance
3. Student transportation
4. Implementation timeline

Fiscal Impacts Subcommittee

1. Resource requirements from state, district, and local
2. Distribution of capital assets and financial obligations
3. Funding for effective implementation

Further Recommendations for Action

1. Revenue Policies: Referendum Reform and New Castle County Tax District
2. State investment in impacted school districts: (1) High-quality early learning expansion, (2) premium pay policy, (3) specialized programs, (4) enhanced wraparound services, (5) social drivers needs assessment
3. Choice and Charter Reform

Questions?

