

# **Alcohol, Tobacco & Other Drug Abuse Among Delaware Students 1999**

**FINAL REPORT**  
**To The State Incentive Cooperative  
Agreement Advisory Committee**  
August 2000



Prepared by the Center for Drug & Alcohol Studies  
& the Center for Community Development & Family Policy,  
University of Delaware.



## **KEY STAFF ON THE 1999 DELAWARE SCHOOL SURVEY**

**ROBERTA GEALT  
MARY-ANNE POULOS  
MIKE ANTONIO  
TAMMY HAYES-HARTMAN  
MARY BIGELOW  
DAN O'CONNELL  
TIHO ENEV  
LISA GILMAN  
RUSS SILVERBERG  
FLORENCE ROSS  
DEBBIE HARRINGTON  
JUDY HUNTER  
GAIL COVERDALE  
JEN PETERS  
RICHARD SACHER  
STEVE MARTIN**

**AND A CAST OF 20-30 OTHERS WHO PITCHED IN TO GO TO  
SCHOOLS**

**Center for Drug and Alcohol Studies  
University of Delaware  
Newark, DE 19716-2582**

**(Address all inquiries to Steven S. Martin)**

**This Study was supported by Cooperative Agreement #SP08192 to Delaware's Division of Alcoholism, Drug Abuse and Mental Health, Department of Health and Social Services and by Grant # SP06889 to Delaware's Office of Prevention and Early Intervention, Department of Services for Children, Youth and Their Families. Both awards are funded by the Center for Substance Abuse Prevention, U.S. Department of Health and Human Services. We wish to thank the Delaware Department of Education and the Delaware Drug Free School Coordinators in each school district for their help in conducting the study. The cooperation of all of the participating schools, teachers, and students is greatly appreciated and gratefully acknowledged.**

# DELAWARE SCHOOL SURVEYS REPORT 1999

## CONTENTS

<b>I.</b>	<b>Key Findings and Overview of Study</b>	<b>3</b>
<b><u>TABLES AND GRAPHS:</u></b>		
<b>II.</b>	<b>Trends in Monthly or Regular Drug Use in Delaware 1989-1999</b>	<b>10</b>
	Cigarettes, Alcohol, and Marijuana Use Among 5th, 8th, and 11th Graders	
	Inhalants, Hallucinogens, Stimulants, Cocaine, and Heroin Use Among 8th Graders	
	Inhalants, Hallucinogens, Stimulants, Cocaine, and Heroin Use Among 11th Graders	
<b>III.</b>	<b>For Each of 5th, 8th, and 11th Graders:</b>	<b>16</b>
	1999 Estimates by Gender and County of Lifetime, Past Year, Past Month, and Recent Heavy Use of Tobacco, Alcohol, Inhalants, and Marijuana and Estimates of Perceived Harmfulness of Each Substance	
	Estimates by Gender and County of Use of Other Illegal Drugs	
	Relation of Past Month Cigarette Use with Past Month Use of Other Drugs	
<b>IV.</b>	<b>Risk and Protective Factors for Drug Use</b>	<b>41</b>
	Availability of Cigarettes, Alcohol, and Other Drugs to Students	
	Past Participation in School-Based Drug Education	
	Substance Use by Peers at School and by Friends	
	Trends in Perceived Risk of Trying/Using Different Drugs 1995-1999	
	Risk and Protective Factors for Initiating Marijuana Use Among Those Who <u>Have Not Yet Tried Marijuana</u>	

<b>V.</b>	<b>School Environment</b>	<b>57</b>
	Estimates by Gender and County of School Violence, School Safety, and Student Comportment	
	Use of Ritalin and Other Psychoactive Medications to Improve Concentration at School by 5th, 8th, and 11th Graders	
<b>VI.</b>	<b>Other Risk Behaviors and Consequences</b>	<b>72</b>
	Estimates by Gender and County of Lifetime, Past Year and Past Month Experience of Riding in a Car with a Driver Who Has Been Drinking or Using Marijuana Among 8th and 11th Graders	
	Trends over Time in Monthly Report of Drinking and Driving and of Marijuana Use and Driving, 1989-1999 by 11th Graders	
	Estimates by Gender and County of Lifetime, Past Year and Past Month Drinking and Driving as well as Marijuana Use and Driving by 11th Graders	
	Past Month Drug Use in Relation to Past Year Report of Delinquent Behaviors Among 8th and 11th Graders	
	Estimates of Gambling and in Relation to Drug Use Among 8th and 11th Graders	
<b>VII.</b>	<b>Parental Involvement and Students' Substance Use</b>	<b>90</b>
	“Get Along with Parents,” “Argue with Parents,” “Talk to Parents,” “Parents Volunteer at School” and Students' Drug Use	
	Household Members' Smoking and Students' Drug Use	
<b>VIII.</b>	<b>How Do the Data for Delaware Compare with What is Happening Regionally and Nationally?</b>	<b>104</b>

# DELAWARE SCHOOL SURVEYS OVERVIEW FOR 1999

This study is the 1999 continuation of a survey that was first administered to Delaware students in Spring, 1989. From 1989 through 1994, the survey was conducted for the Delaware Department of Education. From 1995 to 1998, the survey was supported by the Delaware Prevention Coalition (administered through the Office of Prevention in the Department of Services for Children, Youth and Their Families) and conducted by the Center for Drug and Alcohol Studies at the University of Delaware. The 1999 survey was also conducted by the Center for Drug and Alcohol Studies, but this year is supported by the Delaware State Incentive Grant (SIG) Cooperative Agreement from the Substance Abuse and Mental Health Services Administration's Center for Substance Abuse Prevention (CSAP). The SIG is an effort of the Family Services Cabinet Council under the Governor's leadership. The Delaware SIG is administered by the Delaware Department of Health and Social Services, Division of Alcoholism, Drug Abuse and Mental Health.

The objectives of the 1999 Delaware School Survey study are:

- a. To provide estimates of students' Alcohol, Tobacco and Other Drug Abuse (ATODA) attitudes as well as the incidence and prevalence of substance use as requested by CSAP. Such information is required from the State Incentive Grant states and is also important for the continuing evaluation of the Delaware Prevention Coalition (DPC);
- b. To provide estimates of student ATODA incidence, prevalence, abuse, and dependence for state assessment, planning, and funding purposes;
- c. To provide ongoing trend data comparable with the PAUS surveys (Perspectives, Activities, and Use Surveys) of Delaware school children developed by Data Base, Inc. and used by the Department of Public Instruction used from 1989 to 1994; and
- d. To provide information for other state and local planning and assessment purposes. For example, this year's survey includes new information on gambling and on the use of Ritalin and other psychoactive prescription drugs.

The 1999 survey expands on the sample used in previous years and attempted to interview all 5th, 8th, and 11th graders in the Delaware public schools. The survey was conducted from March through May, 1999 as an anonymous classroom administration, using a form that could be completed in no more than one class period. Classroom administrations were conducted by University of Delaware personnel, rather than by teachers, to reduce teacher burden and to help increase students' perceptions that the results were not seen by school personnel. Passive parental consent and

active student assent was solicited. All consent procedures were reviewed and approved by the University of Delaware's Institutional Review Board. The numbers of completed interviews, after excluding any students who reported using a fictitious drug (included as a question) or who otherwise obviously falsified their answers, were 3,631 11th graders, 6,603 8th graders, and 7,077 5th graders.

SAMPLE DESCRIPTION -- DELAWARE SCHOOL SURVEY 1999

	FIFTH GRADE (N=7,077)	EIGHTH GRADE (N=6,603)	ELEVENTH GRADE (N=3,631)
GENDER (%)			
Males	51	49	49
Females	49	50	51
ETHNICITY (%)			
White	62	62	69
Black	27	27	22
Latino	4	4	3
Other	8	7	6
COUNTY (Ns)			
New Castle	4,105	3,950	1,900
Kent	1,612	1,319	721
Sussex	1,350	1,316	915

University of Delaware School Survey 1999

Surveys were completed in all 19 school districts in the State. The 5th grade sample is over 85% of the total enrollment, and the 8th grade sample is over 75% of the total enrollment. The difference is almost entirely due to differential absenteeism in the 5th and 8th grades. The 11th grade sample is about 63%. The 11th grade sample is a lower percentage primarily because some 11th graders completed the 1999 Youth Risk Behavior Survey instead of the School Survey. Also, three high schools in New Castle County did not participate. A.I. Dupont High School refused and Delcastle Vocational High School and Glasgow High School could not be rescheduled after initial schedule conflicts. Still, the 11th grade sample was chosen randomly including the 11<sup>th</sup> grade in New Castle County and, after checks for non response bias, it is representative of the state and counties. The 1999 sample allows for statewide and countywide estimates that have greater reliability than what were available in previous years.

Since 1995, the cooperation and assistance of the participating school districts have been essential to completing the study, and we are very grateful for their help. The results have proved useful and important for the state agencies involved, for legislative initiatives, and for the communities statewide who are dealing with the problems of alcohol, tobacco, and other drug use among youth. We hope that the expanded sample in 1999 and 2000 will prove even more useful than in previous years to schools, state agencies, and communities statewide that are dealing with the problems of alcohol, tobacco, and other drug use among youth. Reports to the Districts for 1999 are based on significantly more reliable samples. Data from the 1999 survey are being used for Federal reporting requirements to the Department of Health and Humans Services and the Department of Education. We plan to continue this collaboration between the schools, state agencies and the University in subsequent years. The large sample surveys were again collected statewide for Year 2000 results. Funding for the surveys should be available again in 2001 from the Delaware State Incentive Grant. Continued statewide surveillance beyond 2001 will depend on securing new federal or state funding.

## KEY FINDINGS

### Trends in Monthly or Regular Drug Use in Delaware 1989-1999:

- Between 1989 - 1999, reports of monthly drug use by 5th graders have remained low and stable within margin of statistical error. There is no evidence of any trend up or down, and the estimates remain small. Very few 5th graders are current drug users.
- Monthly cigarette use by both 8th and 11th graders declined in 1999 over 1998. For 8th graders the decline was statistically significant. Less than one-third of 11th graders and about one-fifth of 8th graders have smoked in the past month.
- Monthly alcohol use for 11th graders has remained at a very high level for the last decade, nearly 50%. Past month alcohol use for 8th graders has also been quite high, a little more than 25%. In 1999, there were small declines in report of past month drinking for both 8th and 11th graders.
- Monthly marijuana use increased markedly from 1992 to 1995 for both 11th and 8th graders. Since 1995, marijuana use has fluctuated up and down. In 1998, 11th graders' use fell and 8th graders' use rose; in 1999, the reverse was true and 11th graders' use rose and 8th graders' use fell.
- Reports of monthly use of other drugs remain rare: the other drug most often used by 8th and 11th graders is inhalants (5% for 8th graders and 3% for 11th graders). For 8th and 11th graders, cocaine or heroin use is 1% or less.

### 1999 Drug Use by 5th, 8th, and 11th Graders

- In the 5th grade, most students have not yet experimented with drugs. Even the most common drug tried, alcohol, has only been tried by one out of four, cigarettes by one out of seven, and inhalants by one out of twelve.
- In general, use of any of the drugs illegal for youth (that includes cigarettes and alcohol) does not differ significantly among the 3 Counties in Delaware.



- 8th grade girls are about as likely to be drug users as 8th grade boys. By the 11th grade, except for cigarettes, boys are generally more likely to be past month drug users.
- Binge drinking (defined as 3 or more drinks at a time in the past 2 weeks) is high among 8th and 11th graders: 29% of all 11th graders and 14% of all 8th graders report binge drinking. And most students who report having at least 1 drink in the past month report binge drinking in the past 2 weeks.
- Cigarettes are a gateway drug. For 5th, 8th, and 11th grade students, those who report past month cigarette use, as compared to those who do not, are significantly more likely to be past month users of alcohol, marijuana, and other illegal drugs. In fact, if an 8th or 11th grader is a current cigarette smoker, there is a greater than 50% likelihood that she or he is also a current drinker and user of marijuana.

### Risk and Protective Factors for Drug Use

- Cigarettes, alcohol, marijuana, and even cocaine are available to 5th graders – one out of six 5th graders says it is easy to get cigarettes and alcohol, one out of seven says it is easy to get marijuana, and one out of nine says it is easy to get cocaine. Also, about 22% of 5th graders say they know where to buy cigarettes.
- When it comes to 8th and 11th graders, more than half of the 8th graders and about three-quarters of the 11th graders know where to get cigarettes, alcohol, and marijuana. On the plus side, the percentage of 8th graders who knew where to get these drugs declined slightly from 1998 to 1999.
- 97% of 5th graders, 93% of 8th graders, and 89% of 11th graders report having had some drug education in school (DARE is part of the 5th Grade curriculum statewide). The percentage of eleventh graders reporting they have had some drug education in school has increased significantly. Only 50% of eleventh graders in 1995, 58% in 1996, 69% in 1997, and 85% in 1998 reported ever receiving some form of drug education in school. This increase reflects the increasing coverage of DARE and other programs since 1995.
- Whereas 97% of 5th graders report receiving drug education in the past year, only 56% of 8th and 39% of 11th graders report any drug education in the 1998 - 1999 school year. The past year percentage, although low for 11th graders, is an improvement from 29% in 1998.

- Both 8th and 11th graders reported less use of cigarettes, alcohol, and marijuana by peers in 1999, compared to 1998.
- Significantly more 8th and 11th graders think there is a "great risk" from smoking a pack of cigarettes a day in 1999, compared to 1998. On the other hand, the percentage of 5th graders feeling there is a "great risk" from a pack a day went down slightly.
- Most Delaware students do not think there is a "great risk" in regular drinking – only 35% of 5th graders, 23% of 8th graders, and 26% of 11th graders think there is a great risk from drinking every day: both the 5th and 11th grade numbers are declines in "great risk" from 1998.
- Most Delaware students do not think there is a "great risk" in trying marijuana – only 30% of 5th graders, 21% of 8th graders, and 12% of 11th graders think there is a "great risk" from trying marijuana. Moreover, even among those 5th graders who have never tried marijuana, 42% think there is "little risk" from trying marijuana.
- Only 28% of 5th graders think there is "great risk" from trying cocaine. The percentage finding a "great risk" from trying cocaine rises to 41% for 8th graders and 56% for 11th graders. Encouragingly, for all 3 grades, these are increases and significant ones for 8th graders, as compared to 1998.

## School Environment

- The number of 5th, 8th, and 11th graders who think that fighting or violence is a problem at their school declined significantly between 1998 and 1999: from 59% to 54% for 5th graders, from 53% to 44% for 8th graders, and from 47% to 37% for 11th graders.
- The number of students who report students respect teachers and are well behaved increased slightly between 1998 and 1999 for 5th, 8th, and 11th graders.
- However, the percentage of students who feel safe in school and on the bus declined between 1998 and 1999 for 8th and 11th graders. This is likely a response to the Columbine and other school incidents nationally reported in spring 1999.

- About 9% of 5th graders, 7% of 8th graders, and 6% of 11th graders report using Ritalin or other psychoactive medication to help them concentrate better at school. More than twice as many boys as girls report psychoactive medication use.
- Use of Ritalin or other psychoactive medication is positively associated with current cigarette, alcohol, and other drug use.

### Other Risk Behaviors and Consequences

- About 9% of 11th graders report driving after smoking marijuana in the past month, while 6% report driving after drinking alcohol in the past month. The 6% figure for drinking and driving is a significant decline from 1998.
- Among both 8th and 11th graders, past month substance use – whether cigarettes, alcohol, or marijuana – is highly correlated with other delinquent behaviors such as gang fights, stealing, illegal entry, and trouble with police.
- Monthly gambling is associated with drug use for both 8th and 11th graders.

### Parental Involvement and Students' Substance Use

- For all grades – 8th graders in particular – students who report that they communicate well with their parents and that their parents are involved with their school are less likely to use drugs.
- Students, particularly 8th graders, whose parents or siblings smoke cigarettes are more likely to smoke cigarettes and use other drugs.

### How Does Delaware Compare with Other States and the Nation?

- We have little data yet from other states for 1999. National data report little change in drug use for 8th and 12th graders between 1998 and 1999. In the past 5 years, Delaware trends have tended to precede national trends by about a year. The rates of drug use among Delaware students are comparable to those reported nationally in the past couple of years, though marijuana use has been higher in Delaware.

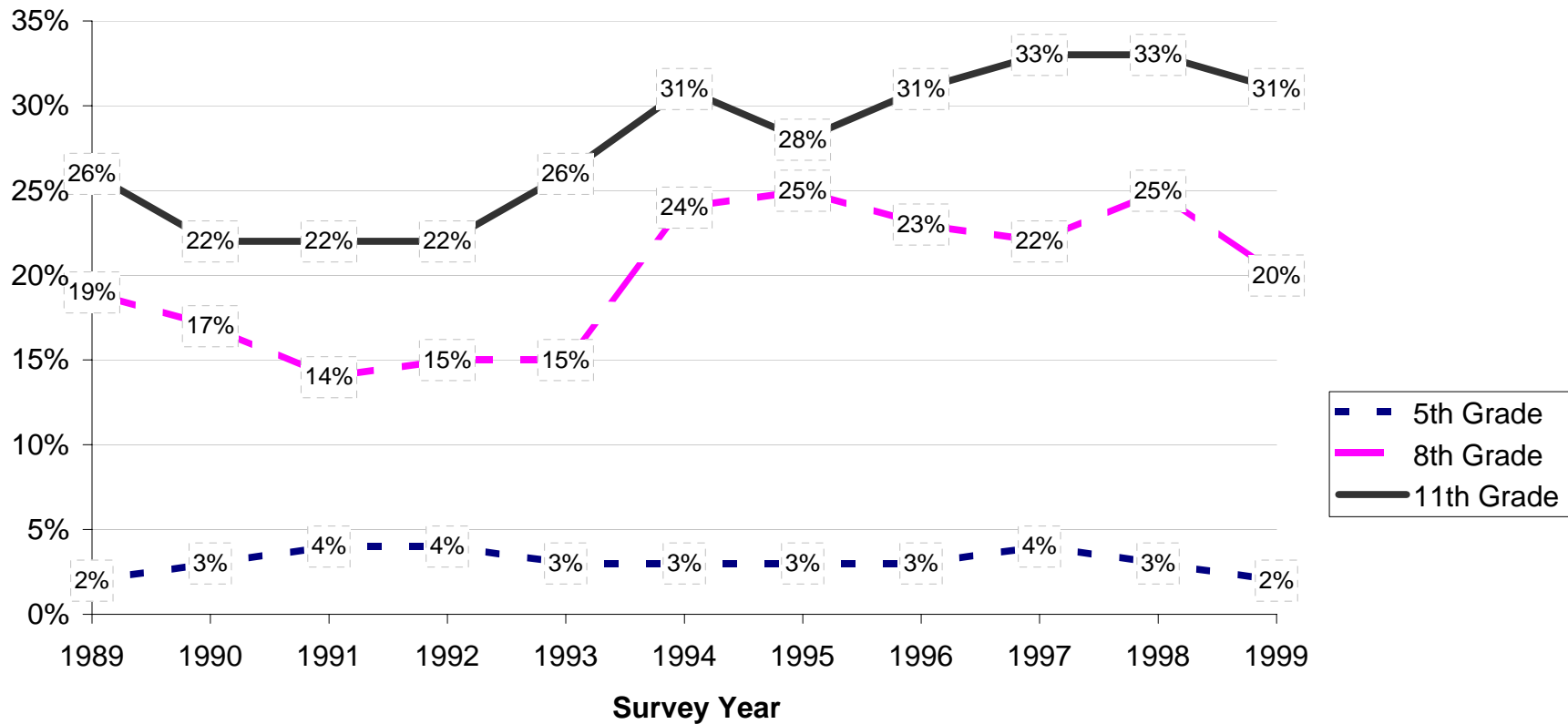
II. Trends in Monthly or Regular Drug Use in Delaware, 1989 – 1999

Cigarette, Alcohol, and Marijuana Use Among  
5th, 8th and 11th Graders

Inhalant, Hallucinogen, Stimulant, Cocaine and  
Heroin Use Among 8th Graders

Inhalant, Hallucinogen, Stimulant, Cocaine and  
Heroin Use Among 11th Graders

## TRENDS IN DELAWARE STUDENTS' CIGARETTE USE BY GRADE SELF-REPORTED REGULAR USE\*, 1989-1999

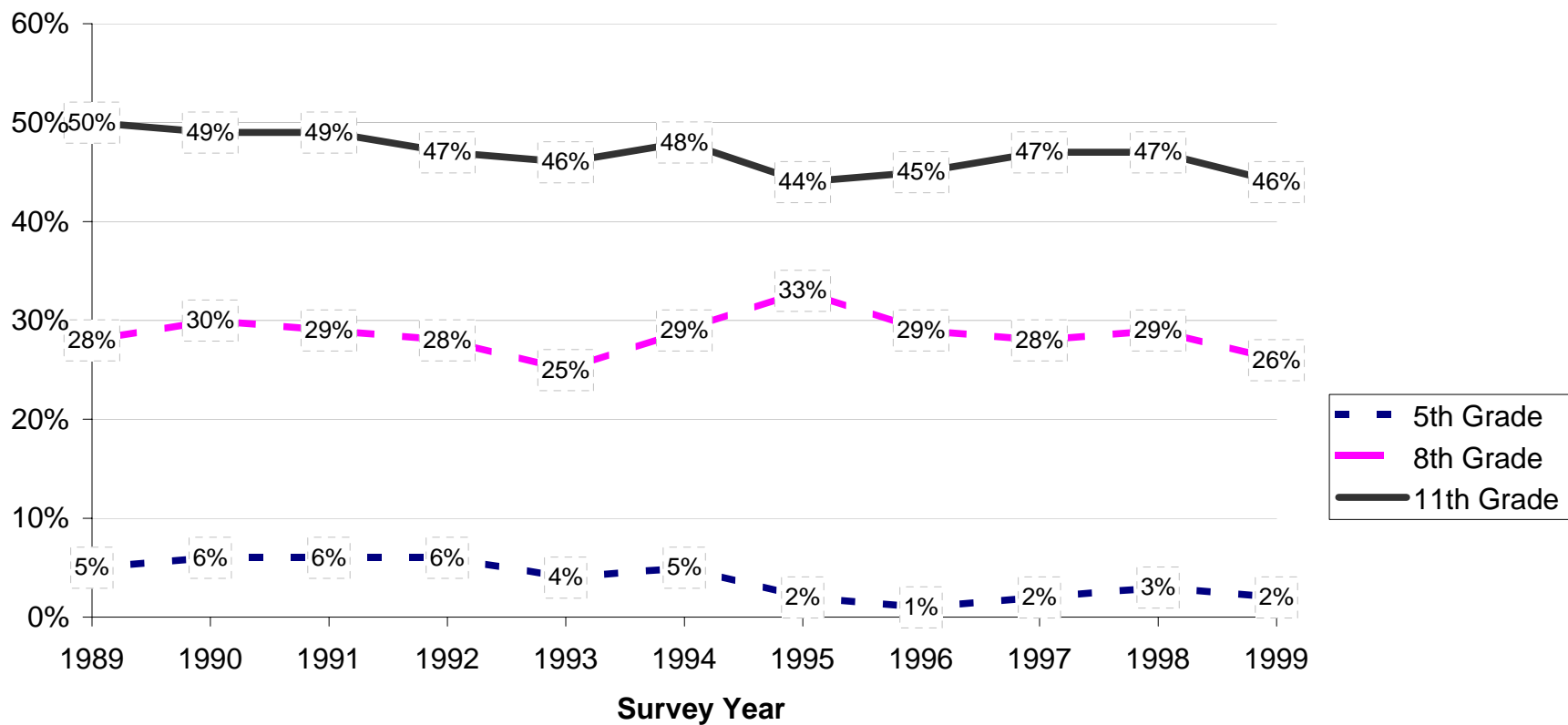


Note: \*Regular use is defined as reports of about once a month or more often; see note, page 14

Source: Data Base/ DiagnosticsPlus (1989 - 1993); Department of Public Instruction 1994; University of Delaware Surveys 1995



## TRENDS IN DELAWARE STUDENTS' ALCOHOL USE BY GRADE SELF-REPORTED REGULAR USE\*, 1989-1999

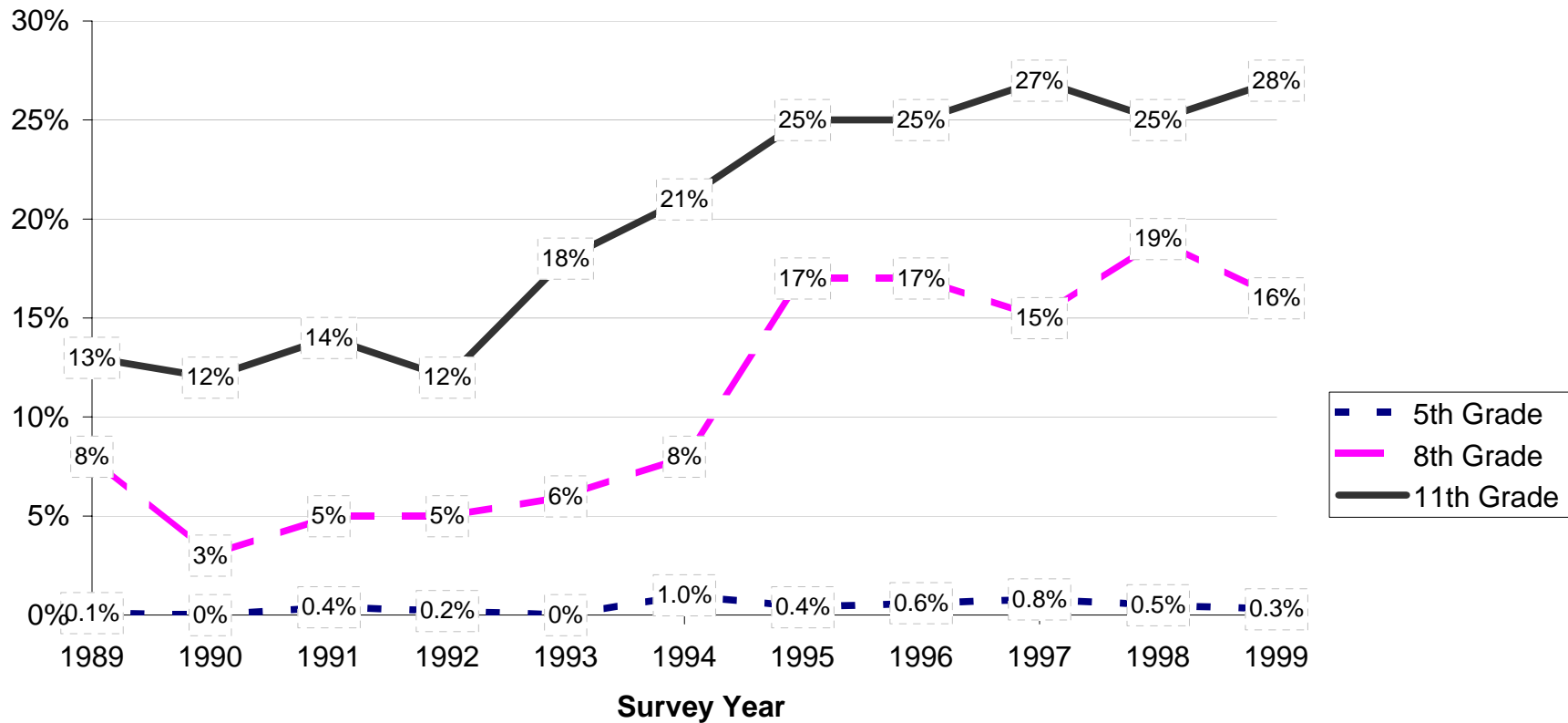


Note: \*Regular use is defined as reports of about once a month or more often; see note, page 14

Source: Data Base/ DiagnosticsPlus (1989 - 1993); Department of Public Instruction 1994; University of Delaware Surveys 1995-1999



## TRENDS IN DELAWARE STUDENTS' MARIJUANA USE BY GRADE SELF-REPORTED REGULAR USE\*, 1989-1999



Note: \*Regular use is defined as reports of about once a month or more often; see note, page 14

Source: Data Base/ DiagnosticsPlus (1989 - 1993); Department of Public Instruction 1994; University of Delaware Surveys 1995  
1999



**TRENDS IN MONTHLY USE<sup>c</sup> OF OTHER ILLEGAL DRUGS  
AMONG DELAWARE EIGHTH GRADERS 1989-1999**  
(percentages)

DRUG	YEAR										
	1989	1990	1991	1992	1993	1994	1995	1996	1997	1998	1999
Inhalants	2	2	2	1	2	2	9	6	9	8	5
Hallucinogens <sup>a</sup>	1	-	1	1	1	1	2	2	1	1	2
Stimulants	4	2	2	2	2	2	2	1	2	2	2
Cocaine <sup>a</sup>	1	-	1	-	-	1	1	-	1	1	1
Heroin <sup>ab</sup>	na	na	na	Na	na	na	na	na	1	1	-

**TRENDS IN MONTHLY USE<sup>c</sup> OF OTHER ILLEGAL DRUGS  
AMONG DELAWARE ELEVENTH GRADERS 1989-1999**  
(percentages)

DRUG	YEAR										
	1989	1990	1991	1992	1993	1994	1995	1996	1997	1998	1999
Inhalants	3	2	1	2	1	4	2	3	3	2	3
Hallucinogens	2	1	3	2	3	4	3	3	3	3	2
Stimulants	3	2	3	3	3	4	2	2	4	3	2
Cocaine <sup>a</sup>	3	2	1	1	-	1	1	2	2	2	1
Heroin <sup>ab</sup>	1	-	1	-	-	na	1	1	1	1	-

Note: <sup>a</sup>(-) indicates less than one-half of one percent  
<sup>b</sup>(na) indicates question was not asked that year  
<sup>c</sup>See explanation of change in definition of monthly use for some drugs beginning in 1995, see note, page 14.

Source: Data/Base Diagnostics Plus (1989-1993); Department of Public Instruction 1994; University of Delaware Survey 1995-1999



## Important Footnote to the Trend Graphs and Tables of Delaware Students' Report of Monthly or Regular Use:

¶The data from the 1989 - 1994 PAUS Survey done for the Department of Public Instruction (DPI) come from responses to the questions: "How often do you usually use (or have ever used) each of:

Cigarettes  
Alcohol (beer, wine, liquor, coolers)  
Marijuana (grass, pot, hash, weed)"

with response categories: (never), (once or twice before but not again), (about once or twice a year), (about once or twice a month), (about once or twice a week), and (almost every day). Responses of (about once or twice a month) or more often are considered monthly or regular use.

¶The data from the 1995 - 1999 University of Delaware Surveys for 5th graders come from responses to a question like that used in the PAUS survey. The data for 8th and 11th graders are different. They come from the questions used in the national Monitoring the Future Surveys (MTF):

"In the past month,  
how many cigarettes have you smoked  
how many times have you had a drink (not just a few sips) of alcohol (beer, wine, liquor, mixed drinks)  
how many times have you smoked marijuana (grass, pot, hash, weed)  
with responses of one full cigarette and one time or more being coded as regular use.

In both the PAUS and UD surveys, any student who reports use of a fictitious drug (in 1999 "dactyls") is excluded from the analysis.

Nationally, use of marijuana by youth escalated dramatically between 1993 and 1995. It increased even more dramatically in Delaware; however, the change in wording after 1995 may explain part of the increase in drug use shown in the figures from 1994 to 1995. This is particularly true for the 8th graders, if one assumes that past month use may be experimental and not indicative of what one "usually uses." This means the 1995-1999 question may be measuring past month use rather than past month regular use. And the Delaware estimates for 1989-1994 may actually underestimate past month use, as measured in the national MTF and National Household surveys. The question format has been consistent since 1995.

III. For Each of 5th, 8th, and 11th Graders:

1999 Estimates by Gender and County of Lifetime, Past Year, Past Month, and Recent Heavy Use of Tobacco, Alcohol, Inhalants, and Marijuana and Estimates of Perceived Harmfulness of Each Substance

Estimates by Gender and County of Use of Other Illegal Drugs

Relationship of Past Month Cigarette Use with Past Month Use of Other Drugs

**CIGARETTE USE AMONG 1999 DELAWARE FIFTH GRADERS**  
(percentages)

	<b>LIFETIME USE</b>	<b>PAST YEAR USE</b>	<b>PAST MONTH USE</b>	<b>PERCEIVED GREAT RISK OF HARM FROM PACK OR MORE PER DAY</b>
<u>Statewide</u>	14	5	2	45
<u>Males</u>	15	5	2	40
<u>Females</u>	13	5	2	51
<u>New Castle</u>	12	4	2	44
<u>Males</u>	13	5	2	40
<u>Females</u>	11	4	2	50
<u>Kent</u>	15	6	3	44
<u>Males</u>	16	6	3	38
<u>Females</u>	14	7	3	50
<u>Sussex</u>	17	5	2	48
<u>Males</u>	20	6	2	43
<u>Females</u>	15	5	2	54

Source: University of Delaware Survey 1999

**TOBACCO USE AMONG 1999 DELAWARE FIFTH GRADERS**  
(percentages)

	LIFETIME USE			PAST YEAR			PAST MONTH		
	Cigarette	Smokeless <sup>a</sup>	All	Cigarette	Smokeless <sup>a</sup>	All	Cigarette	Smokeless <sup>a</sup>	All
<u>State</u>	14	2	14	5	1	5	2	-	2
<u>Male</u>	15	3	16	5	1	6	2	-	2
<u>Female</u>	13	1	13	5	-	5	2	-	2
<u>New Castle</u>	12	1	12	4	-	4	2	-	2
<u>Male</u>	13	2	14	5	-	5	2	-	2
<u>Female</u>	11	-	12	4	-	4	2	-	2
<u>Kent</u>	15	3	16	6	1	7	3	1	3
<u>Male</u>	16	4	18	6	2	7	3	1	3
<u>Female</u>	14	1	14	7	-	6	3	-	3
<u>Sussex</u>	17	3	18	6	1	6	2	-	2
<u>Male</u>	20	5	22	6	1	7	2	-	2
<u>Female</u>	15	1	15	5	1	5	2	-	2

Note: <sup>a</sup>(-) indicates less than one half of one percent

Source: University of Delaware Survey 1999

**ALCOHOL USE AMONG 1999 DELAWARE FIFTH GRADERS**  
(percentages)

	LIFETIME USE	PAST YEAR USE	PAST MONTH USE	PERCEIVED GREAT RISK OF HARM FROM:	
				TRYING	DAILY USE
<u>Statewide</u>	25	8	2	15	35
<u>Males</u>	29	11	3	14	31
<u>Females</u>	22	6	1	17	39
<u>New Castle</u>	25	8	2	14	34
<u>Males</u>	27	10	3	12	30
<u>Females</u>	22	6	1	16	38
<u>Kent</u>	28	9	3	16	34
<u>Males</u>	31	12	4	14	30
<u>Females</u>	24	7	2	18	37
<u>Sussex</u>	24	8	2	18	38
<u>Males</u>	30	11	3	16	35
<u>Females</u>	19	5	1	20	40

Source: University of Delaware Survey 1999

**INHALANT USE AMONG 1999 DELAWARE FIFTH GRADERS**  
(percentages)

	LIFETIME USE	PAST YEAR USE	PAST MONTH USE	PERCEIVED GREAT RISK OF HARM FROM:	
				TRYING	WEEKLY USE
<u>Statewide</u>	8	3	1	20	44
<u>Males</u>	10	3	1	18	41
<u>Females</u>	7	2	1	22	48
<u>New Castle</u>	8	3	1	20	45
<u>Males</u>	9	4	2	19	41
<u>Females</u>	6	2	1	21	49
<u>Kent</u>	10	3	1	20	42
<u>Males</u>	11	3	1	17	38
<u>Females</u>	8	2	1	22	46
<u>Sussex</u>	9	3	1	21	47
<u>Males</u>	9	3	1	18	43
<u>Females</u>	9	3	1	24	50

Source: University of Delaware Survey 1999

**MARIJUANA USE AMONG 1999 DELAWARE FIFTH GRADERS**  
(percentages)

	LIFETIME USE	PAST YEAR USE <sup>a</sup>	PAST MONTH USE <sup>a</sup>	PERCEIVED GREAT RISK OF HARM FROM:	
				TRYING	WEEKLY USE
<u>Statewide</u>	2	1	-	30	49
<u>Males</u>	2	1	-	27	45
<u>Females</u>	1	-	-	32	54
<u>New Castle</u>	1	1	-	29	49
<u>Males</u>	2	1	-	27	45
<u>Females</u>	1	-	-	31	54
<u>Kent</u>	1	1	-	28	46
<u>Males</u>	2	1	-	26	42
<u>Females</u>	-	-	-	31	51
<u>Sussex</u>	2	1	-	33	53
<u>Males</u>	2	1	-	29	49
<u>Female</u>	2	1	-	37	56

Note: <sup>a</sup>(-) indicates less than one half of one percent.

Source: University of Delaware Survey 1999

**OTHER ILLEGAL DRUG<sup>†</sup> USE AMONG  
1999 DELAWARE FIFTH GRADERS**  
(percentages)

	LIFETIME	PAST YEAR	PAST MONTH
<u>Statewide</u>	12	5	2
<u>Males</u>	13	6	3
<u>Females</u>	10	4	2
<u>New Castle</u>	12	5	2
<u>Males</u>	13	6	3
<u>Females</u>	10	5	2
<u>Kent</u>	12	5	2
<u>Males</u>	14	6	3
<u>Females</u>	10	4	1
<u>Sussex</u>	12	5	3
<u>Males</u>	13	6	4
<u>Females</u>	11	4	2

Note:           <sup>†</sup>Other illegal substances include prescription downers, prescription uppers, inhalants, hallucinogens, crack, and cocaine.

Source:        University of Delaware Survey 1999



**PAST YEAR USE OF OTHER ILLEGAL SUBSTANCES  
AMONG 1999 DELAWARE FIFTH GRADERS**  
(percentages)

	<b>Stimulants<sup>a</sup></b>	<b>Downers<sup>a</sup></b>	<b>Hallucinogens<sup>a</sup></b>	<b>Crack<sup>a</sup></b>	<b>Cocaine<sup>a</sup></b>
<u>Statewide</u>	1	1	-	-	-
<u>Males</u>	1	1	-	-	-
<u>Females</u>	1	1	-	-	-
<u>New Castle</u>	1	1	-	-	-
<u>Males</u>	1	1	-	-	-
<u>Females</u>	1	1	-	-	-
<u>Kent</u>	1	1	-	-	-
<u>Males</u>	1	1	-	1	-
<u>Females</u>	-	1	-	-	-
<u>Sussex</u>	1	1	-	-	-
<u>Males</u>	1	2	-	-	-
<u>Females</u>	1	-	-	-	-

Note: <sup>a</sup>(-) indicates less than one half of one percent

Source: University of Delaware Survey 1999

**PAST MONTH ALCOHOL, MARIJUANA AND OTHER ILLEGAL DRUG  
USE AMONG 1999 DELAWARE FIFTH GRADERS  
BY PAST MONTH CIGARETTE USE**  
(percentages)

	<b><u>Past Month Cigarette Use</u></b>	
	<b>Yes</b> n=131 (1.9 %)	<b>No<sup>a</sup></b> n= 6710 (98.1%)
<b><u>Past Month Alcohol Use<sup>***</sup></u></b>		
<u>Yes</u>	33	2
<u>No</u>	67	98
<b><u>Past Month Marijuana Use<sup>***</sup></u></b>		
<u>Yes</u>	12	-
<u>No</u>	88	100
<b><u>Past Month Other Illegal Drug Use<sup>***</sup></u></b>		
<u>Yes</u>	21	2
<u>No</u>	79	98

Note: <sup>a</sup>(-) indicates less than one-half of one percent  
<sup>\*\*\*</sup> p < .001, corrected for continuity

Source: University of Delaware Survey 1999

**CIGARETTE USE AMONG 1999 DELAWARE EIGHTH GRADERS**  
(percentages)

	<b>LIFETIME USE</b>	<b>PAST YEAR USE</b>	<b>PAST MONTH USE</b>	<b>HEAVY USE<sup>a</sup></b>	<b>PERCEIVED GREAT RISK OF HARM FROM PACK OR MORE PER DAY</b>
<u>Statewide</u>	44	32	20	5	49
<u>Males</u>	43	30	19	5	44
<u>Females</u>	44	33	21	5	54
<u>New Castle</u>	44	33	20	5	49
<u>Males</u>	44	31	19	5	46
<u>Females</u>	44	34	22	5	52
<u>Kent<sup>a</sup></u>	40	28	16	3	49
<u>Males</u>	38	25	14	3	40
<u>Females</u>	41	29	17	4	56
<u>Sussex</u>	44	34	24	7	49
<u>Males</u>	44	33	24	7	43
<u>Females</u>	44	34	23	6	55

Note: <sup>a</sup>Heavy use is more than 1/2 pack per day in last 30 days.

Source: University of Delaware Survey 1999

**TOBACCO USE AMONG 1999 DELAWARE EIGHTH GRADERS**  
(percentages)

	LIFETIME USE			PAST YEAR			PAST MONTH		
	Cigarette	Smokeless	All	Cigarette	Smokeless	All	Cigarette	Smokeless	All
<u>State</u>	44	10	45	32	7	33	20	4	21
<u>Male</u>	43	15	45	30	10	32	19	5	20
<u>Female</u>	44	5	44	33	4	33	21	2	21
<u>New Castle</u>	44	9	45	33	6	33	20	3	21
<u>Male</u>	44	12	45	31	8	32	19	4	20
<u>Female</u>	44	6	45	34	4	34	22	2	22
<u>Kent</u>	40	10	42	28	7	30	16	4	17
<u>Male</u>	38	16	42	25	11	29	14	7	16
<u>Female</u>	41	5	41	29	3	30	17	2	18
<u>Sussex</u>	44	13	47	34	9	36	24	4	25
<u>Male</u>	44	21	48	33	13	36	24	7	25
<u>Female</u>	44	5	45	34	4	35	23	1	24

Source: University of Delaware Survey 1999

**ALCOHOL USE AMONG 1999 DELAWARE EIGHTH GRADERS**  
(percentages)

	LIFETIME USE	PAST YEAR USE	PAST MONTH USE	BINGE USE <sup>a</sup>	PERCEIVED GREAT RISK OR HARM FROM:	
					DAILY USE	BINGE USE
<u>Statewide</u>	57	46	26	14	23	43
<u>Males</u>	56	45	25	15	19	40
<u>Females</u>	57	46	25	13	27	46
<u>New Castle</u>	57	46	26	14	22	44
<u>Males</u>	57	45	25	14	19	42
<u>Females</u>	58	47	26	13	25	47
<u>Kent</u>	54	44	23	12	23	42
<u>Males</u>	55	44	22	12	18	37
<u>Females</u>	54	44	24	12	27	46
<u>Sussex</u>	56	46	28	17	25	41
<u>Males</u>	57	48	30	18	19	36
<u>Females</u>	56	44	25	15	30	45

Note: <sup>a</sup>Binge use is defined as 3 drinks at a time in the last 2 weeks.

Source: University of Delaware Survey 1999

**INHALANT USE AMONG 1999 DELAWARE EIGHTH GRADERS**  
(percentages)

	LIFETIME USE	PAST YEAR USE	PAST MONTH USE	HEAVY USE <sup>a</sup>	PERCEIVED GREAT RISK OF HARM FROM:	
					TRYING	WEEKLY USE
<u>Statewide</u>	16	10	5	1	30	63
<u>Males</u>	16	9	4	1	30	59
<u>Females</u>	16	10	5	1	30	67
<u>New Castle</u>	17	10	5	1	30	63
<u>Males</u>	16	10	5	1	30	61
<u>Females</u>	17	10	5	1	29	66
<u>Kent</u>	15	9	4	1	32	64
<u>Males</u>	14	8	2	1	29	56
<u>Females</u>	16	9	5	1	33	70
<u>Sussex</u>	15	9	5	1	29	61
<u>Males</u>	16	9	4	1	30	56
<u>Females</u>	14	10	5	1	29	66

Note: <sup>a</sup>Heavy Use indicates more than 6 times in the past month.

Source: University of Delaware Survey 1999

**MARIJUANA USE AMONG 1999 DELAWARE EIGHTH GRADERS**  
(percentages)

	LIFETIME USE	PAST YEAR USE	PAST MONTH USE	HEAVY USE <sup>a</sup>	PERCEIVED GREAT RISK OF HARM FROM:	
					TRYING	WEEKLY USE
<u>Statewide</u>	31	25	16	7	20	60
<u>Males</u>	34	28	18	9	19	53
<u>Females</u>	27	22	14	5	21	65
<u>New Castle</u>	34	27	18	8	19	59
<u>Males</u>	37	30	19	10	18	54
<u>Females</u>	30	25	15	6	20	64
<u>Kent</u>	23	18	11	4	24	64
<u>Males</u>	25	18	11	4	22	56
<u>Females</u>	21	16	10	4	26	70
<u>Sussex</u>	31	26	17	7	19	58
<u>Males</u>	35	30	21	10	18	50
<u>Females</u>	27	22	13	4	19	65

Note: <sup>a</sup>Heavy use indicates more than 6 times in the past month.

Source: University of Delaware Survey 1999

**OTHER ILLEGAL DRUG<sup>a</sup> USE AMONG  
1999 DELAWARE EIGHTH GRADERS**  
(percentages)

	LIFETIME	PAST YEAR	PAST MONTH
<u>Statewide</u>	25	16	8
<u>Males</u>	25	17	8
<u>Females</u>	25	15	7
<u>New Castle</u>	26	17	8
<u>Males</u>	26	17	9
<u>Females</u>	26	16	8
<u>Kent</u>	22	14	6
<u>Males</u>	21	14	5
<u>Females</u>	23	14	6
<u>Sussex</u>	24	16	9
<u>Males</u>	26	17	10
<u>Females</u>	22	14	8

Note: <sup>a</sup>Other illegal substances include prescription downers, prescription stimulants, Inhalants, hallucinogens, crack, cocaine, and heroin.

Source: University of Delaware Survey 1999



**PAST YEAR USE OF OTHER ILLEGAL SUBSTANCES  
AMONG 1999 DELAWARE EIGHTH GRADERS**  
(percentages)

	<b>Uppers</b>	<b>Downers</b>	<b>Hallucinogens</b>	<b>Crack</b>	<b>Heroin</b>	<b>Cocaine</b>
<u>Statewide</u>	4	3	4	1	1	1
<u>Males</u>	4	3	6	2	1	2
<u>Females</u>	4	2	3	1	1	1
<u>New Castle</u>	5	3	5	1	1	1
<u>Males</u>	4	3	7	2	1	2
<u>Females</u>	5	3	3	1	1	1
<u>Kent</u>	3	2	2	1	1	1
<u>Males</u>	2	2	3	2	1	1
<u>Females</u>	4	1	1	2	1	1
<u>Sussex</u>	4	2	5	2	1	2
<u>Males</u>	4	2	6	2	2	3
<u>Females</u>	3	2	3	1	1	1

Source: University of Delaware Survey 1999

**PAST MONTH ALCOHOL, MARIJUANA AND OTHER ILLEGAL DRUG  
USE AMONG 1999 DELAWARE EIGHTH GRADERS  
BY PAST MONTH CIGARETTE USE**  
(percentages)

	<b><u>Past Month Cigarette Use</u></b>	
	<b>Yes</b> n=1183(20%)	<b>No</b> n=4664(80%)
<b><u>Past Month Alcohol Use</u></b> <sup>***</sup>		
<u>Yes</u>	65	15
<u>No</u>	35	85
<b><u>Past Month Marijuana Use</u></b> <sup>***</sup>		
<u>Yes</u>	55	6
<u>No</u>	45	94
<b><u>Past Month Other Illegal Drug Use</u></b> <sup>***</sup>		
<u>Yes</u>	22	4
<u>No</u>	78	96

Note:           \*\*\*p < .001, corrected for continuity

Source:       University of Delaware Survey 1999

## CIGARETTE USE AMONG 1999 DELAWARE ELEVENTH GRADERS

(percentages)

	LIFETIME USE	PAST YEAR USE	PAST MONTH USE	HEAVY USE <sup>a</sup>	PERCEIVED GREAT RISK OF HARM FROM PACK OR MORE PER DAY
<u>Statewide</u>	55	41	31	14	64
<u>Males</u>	55	41	31	14	57
<u>Females</u>	56	42	31	12	71
<u>New Castle</u>	55	40	29	12	68
<u>Males</u>	54	38	29	13	60
<u>Females</u>	56	41	30	11	74
<u>Kent</u>	52	39	29	12	61
<u>Males</u>	55	43	31	13	56
<u>Females</u>	50	36	28	12	65
<u>Sussex</u>	60	47	36	16	58
<u>Males</u>	60	45	36	18	50
<u>Females</u>	60	48	36	14	66

Note: <sup>a</sup>Heavy use is more than ½ pack per day in the last 30 days

Source: University of Delaware Survey 1999

## TOBACCO USE AMONG 1999 DELAWARE ELEVENTH GRADERS

(percentages)

	LIFETIME USE			PAST YEAR			PAST MONTH		
	Cigarette	Smokeless	All	Cigarette	Smokeless	All	Cigarette	Smokeless	All
<u>State</u>	55	16	58	41	9	43	29	5	32
<u>Male</u>	55	26	60	41	16	44	31	9	33
<u>Female</u>	56	6	56	42	3	42	31	1	31
<u>New Castle</u>	55	13	56	40	7	41	29	4	30
<u>Male</u>	54	22	57	38	13	41	29	7	31
<u>Female</u>	56	4	56	41	2	42	30	1	30
<u>Kent</u>	52	15	55	39	10	41	29	5	31
<u>Male</u>	55	28	60	43	18	48	31	11	35
<u>Female</u>	50	4	51	36	2	36	28	1	28
<u>Sussex</u>	60	21	64	47	13	50	36	8	38
<u>Male</u>	60	34	66	45	23	51	36	14	40
<u>Female</u>	60	8	61	48	4	48	36	2	36

Source: University of Delaware Survey 1999

**ALCOHOL USE AMONG 1999 DELAWARE ELEVENTH GRADERS**  
(percentages)

	LIFETIME USE	PAST YEAR USE	PAST MONTH USE	BINGE USE <sup>a</sup>	PERCEIVED GREAT RISK OR HARM FROM:	
					DAILY USE	BINGE USE
<u>Statewide</u>	78	69	46	29	27	43
<u>Males</u>	78	70	49	33	21	35
<u>Females</u>	78	69	42	25	33	50
<u>New Castle</u>	78	70	46	28	29	44
<u>Males</u>	78	70	50	32	22	37
<u>Females</u>	79	70	42	25	34	51
<u>Kent</u>	75	67	44	29	25	41
<u>Males</u>	77	70	51	37	19	33
<u>Females</u>	72	64	38	22	30	47
<u>Sussex</u>	81	71	47	31	25	40
<u>Males</u>	80	72	49	35	19	32
<u>Females</u>	81	71	45	28	29	47

Note: <sup>a</sup>Binge use is defined as 3 drinks at a time in the last 2 weeks.

Source: University of Delaware Survey 1999

**INHALANT USE AMONG 1999 DELAWARE ELEVENTH GRADERS**  
(percentages)

	LIFETIME USE	PAST YEAR USE	PAST MONTH USE	HEAVY USE <sup>ab</sup>	PERCEIVED GREAT RISK OR HARM FROM:	
					TRYING	WEEKLY USE
<u>Statewide</u>	11	6	3	1	42	77
<u>Males</u>	12	7	4	1	42	73
<u>Females</u>	10	5	2	-	43	81
<u>New Castle</u>	10	5	2	1	42	80
<u>Males</u>	11	6	3	1	42	75
<u>Females</u>	8	3	1	-	43	84
<u>Kent</u>	11	5	2	1	42	76
<u>Males</u>	14	7	4	1	40	72
<u>Females</u>	8	3	1	-	44	81
<u>Sussex</u>	14	8	4	1	42	72
<u>Males</u>	15	8	5	2	42	70
<u>Females</u>	14	8	2	1	42	74

\*Note:           <sup>a</sup>Heavy use indicates more than 6 times in past month  
                  <sup>b</sup>(-) indicates less than one half of one percent

Source:           University of Delaware Survey 1999

**MARIJUANA USE AMONG 1999 DELAWARE ELEVENTH GRADERS**  
(percentages)

	LIFETIME USE	PAST YEAR USE	PAST MONTH USE	HEAVY USE <sup>a</sup>	PERCEIVED GREAT RISK OR HARM FROM:	
					TRYING	WEEKLY USE
<u>Statewide</u>	53	43	28	15	13	50
<u>Males</u>	57	47	34	20	12	44
<u>Females</u>	50	39	24	10	13	56
<u>New Castle</u>	53	43	29	15	12	51
<u>Males</u>	57	48	35	20	11	43
<u>Females</u>	50	39	24	10	12	58
<u>Kent</u>	51	40	26	13	13	50
<u>Males</u>	55	46	33	19	14	45
<u>Females</u>	47	36	19	8	13	55
<u>Sussex</u>	56	46	30	16	14	50
<u>Males</u>	58	50	34	20	13	46
<u>Females</u>	53	42	26	13	16	53

Note: <sup>a</sup>Heavy use indicates more than six times in the past month.

Source: University of Delaware Survey 1999

**OTHER ILLEGAL DRUG<sup>a</sup> USE AMONG 1999 DELAWARE ELEVENTH GRADERS**  
(percentages)

	<b>LIFETIME</b>	<b>PAST YEAR</b>	<b>PAST MONTH</b>
<u>Statewide</u>	27	18	7
<u>Males</u>	29	19	9
<u>Females</u>	26	16	6
<u>New Castle</u>	26	17	6
<u>Males</u>	27	18	7
<u>Females</u>	25	16	6
<u>Kent</u>	26	15	6
<u>Males</u>	30	19	10
<u>Females</u>	22	11	3
<u>Sussex</u>	31	21	9
<u>Males</u>	32	22	11
<u>Females</u>	29	20	8

Note: <sup>a</sup>Other illegal substances include prescription downers, prescription stimulants, inhalants, hallucinogens, crack, cocaine and heroin.

Source: University of Delaware Survey 1999



**PAST YEAR USE OF OTHER ILLEGAL SUBSTANCES  
AMONG 1999 DELAWARE ELEVENTH GRADERS**  
(percentages)

	<b>Uppers</b>	<b>Downers</b>	<b>Hallucinogens</b>	<b>Crack<sup>a</sup></b>	<b>Heroin<sup>a</sup></b>	<b>Cocaine</b>
<u>Statewide</u>	5	4	10	1	1	3
<u>Males</u>	5	5	11	2	1	3
<u>Females</u>	5	4	8	1	1	3
<u>New Castle</u>	5	5	9	1	1	3
<u>Males</u>	5	5	10	1	1	2
<u>Females</u>	6	4	8	1	1	3
<u>Kent</u>	5	3	8	1	1	2
<u>Males</u>	7	3	11	2	1	2
<u>Females</u>	4	3	5	-	-	1
<u>Sussex</u>	4	5	12	2	1	5
<u>Males</u>	4	6	13	2	1	4
<u>Females</u>	5	3	11	2	1	5

Note: <sup>a</sup>(-) indicates less than one percent

Source: University of Delaware Survey 1999

**PAST MONTH ALCOHOL, MARIJUANA, AND OTHER ILLEGAL  
DRUG USE AMONG DELAWARE 1999 ELEVENTH GRADERS  
BY PAST MONTH CIGARETTE USE**  
(percentages)

	<u>Past Month Cigarette Use</u>	
	Yes	No
<b><u>Past Month Alcohol Use***</u></b>		
<u>Yes</u>	76	32
<u>No</u>	24	68
<b><u>Past Month Marijuana Use***</u></b>		
<u>Yes</u>	60	14
<u>No</u>	40	86
<b><u>Past Month Other Illegal Drug Use***</u></b>		
<u>Yes</u>	17	3
<u>No</u>	83	97

Note: \*\*\*p< .001, corrected for continuity

Source: University of Delaware Survey 1999

#### IV. Risk and Protective Factors for Drug Use

Availability of Cigarettes, Alcohol and Other  
Drugs to Students

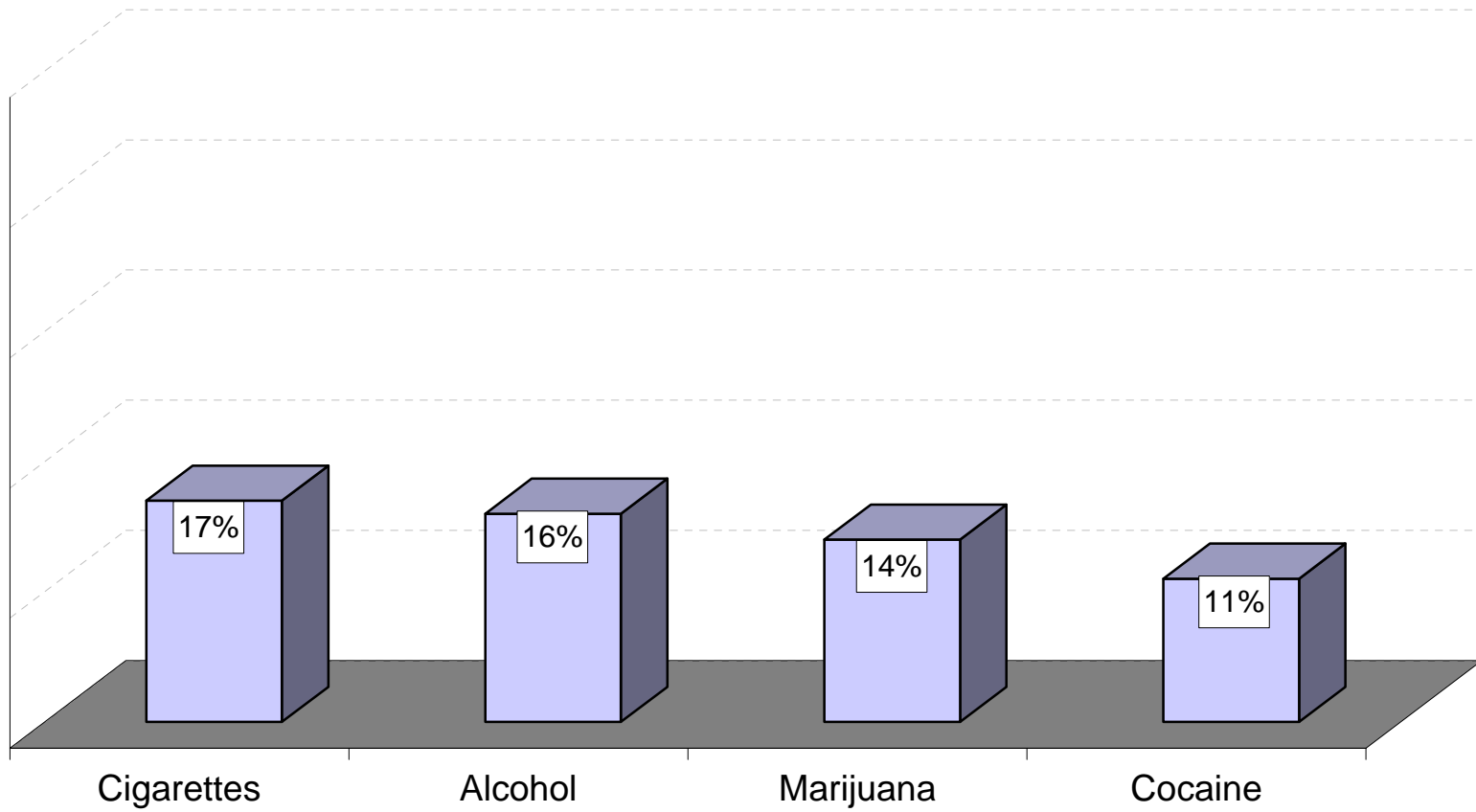
Past Participation in School-Based Drug  
Education

Substance Use by Peers at School and by  
Friends

Trends in Perceived Risk of Trying/Using  
Different Drugs 1995-1999

Risk and Protective Factors for Initiating  
Marijuana Use among Those Who Have Not Yet  
Tried Marijuana

# 1999 DELAWARE FIFTH GRADERS WHO SAY IT IS "EASY" TO GET DRUGS



Source: University of Delaware Survey 1999

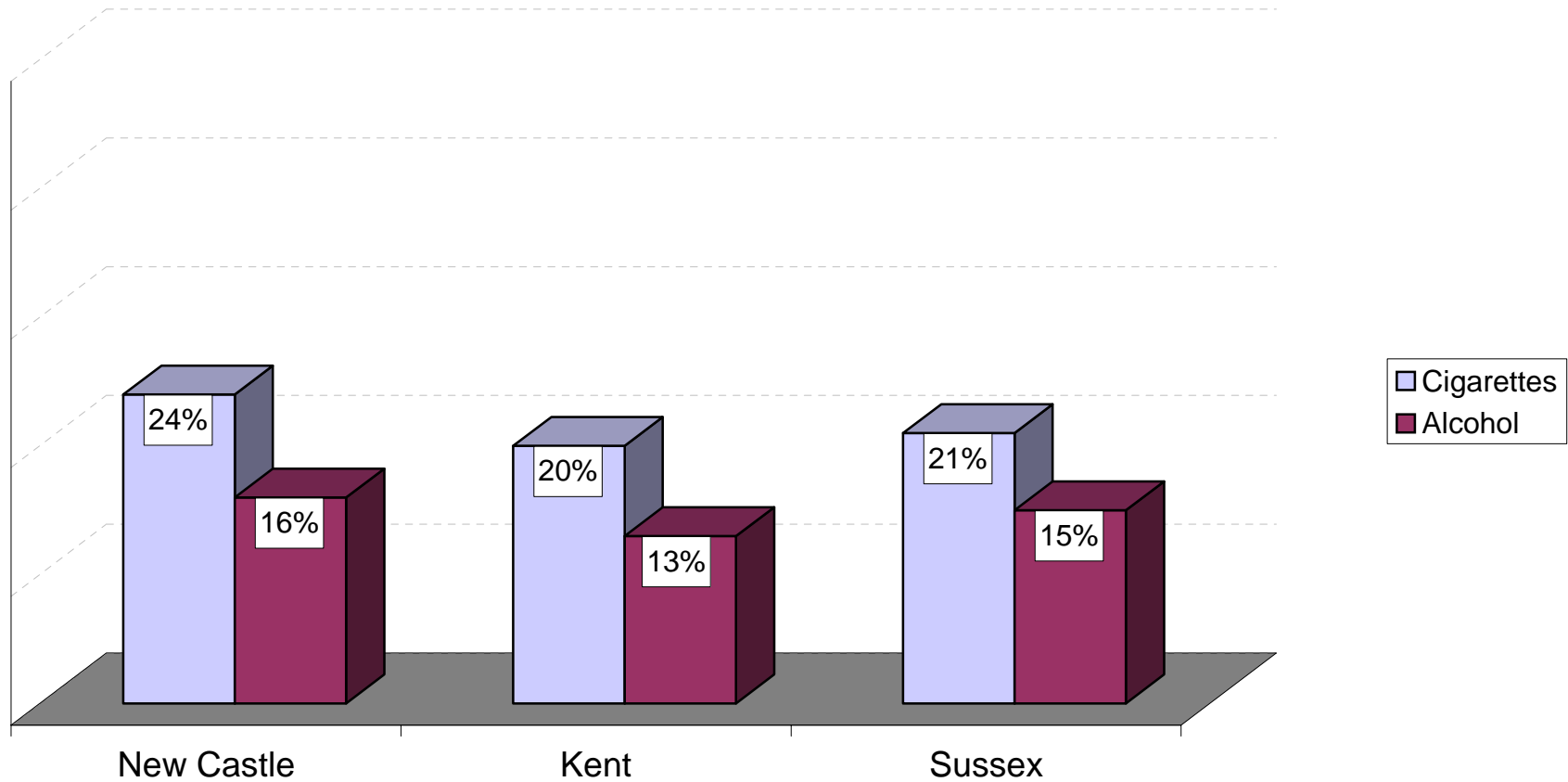


**1999 DELAWARE FIFTH GRADERS WHO SAY IT IS EASY TO GET:**  
(percentages)

	<b>Cigarettes</b>	<b>Alcohol</b>	<b>Marijuana</b>	<b>Cocaine</b>
<u>Statewide</u>	17	16	14	11
<u>Males</u>	20	19	15	12
<u>Females</u>	15	14	12	10
<u>New Castle</u>	17	17	15	12
<u>Males</u>	19	20	16	13
<u>Females</u>	14	14	13	10
<u>Kent</u>	17	14	13	10
<u>Males</u>	20	16	15	12
<u>Females</u>	15	12	10	8
<u>Sussex</u>	19	17	12	11
<u>Males</u>	23	19	14	12
<u>Females</u>	15	14	10	10

Source: University of Delaware Survey 1999

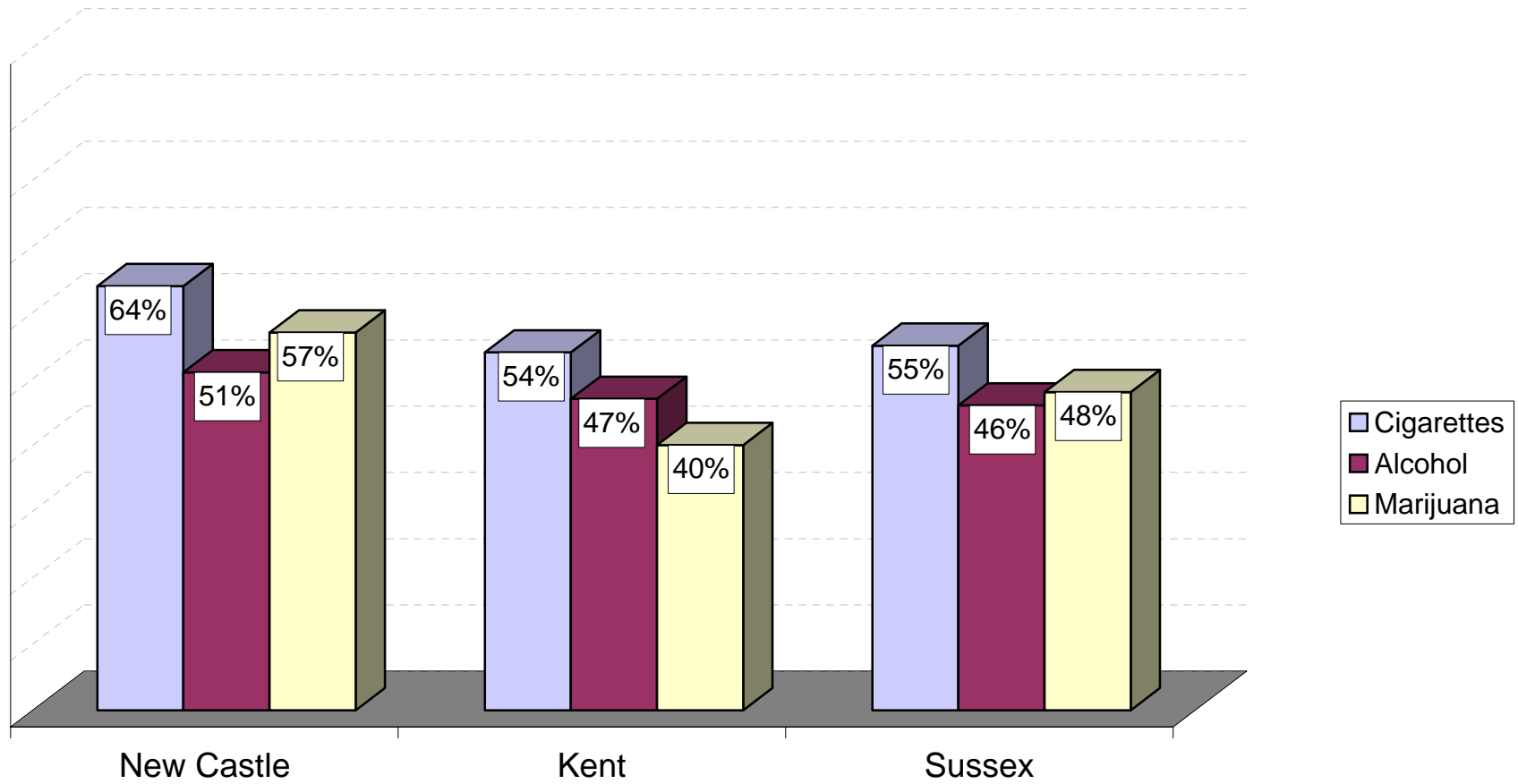
### 1999 DELAWARE FIFTH GRADERS WHO KNOW WHERE TO BUY CIGARETTES AND ALCOHOL BY COUNTY



Source: University of Delaware Survey 1999



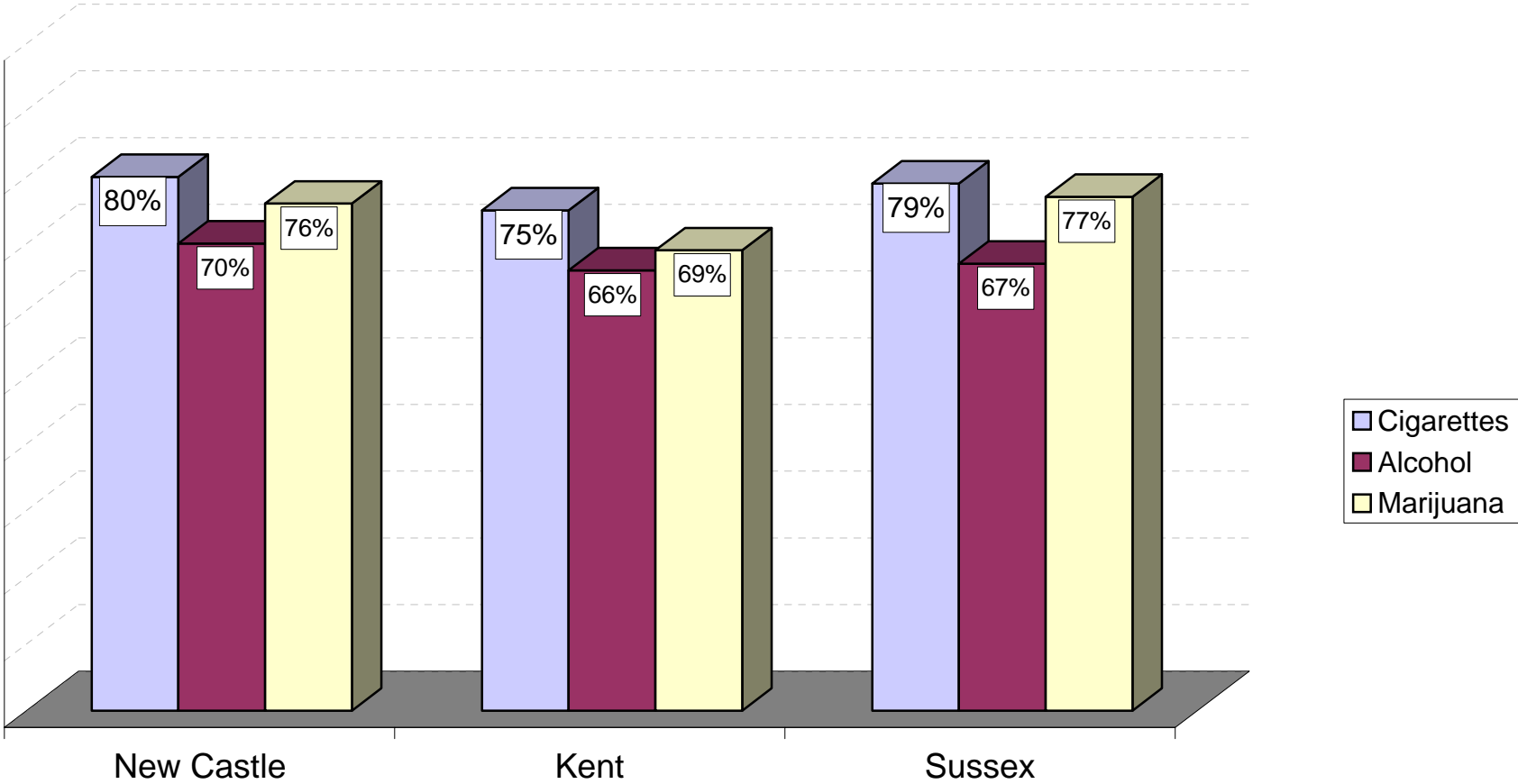
# 1999 DELAWARE EIGHTH GRADERS WHO KNOW WHERE TO GET CIGARETTES, ALCOHOL & MARIJUANA BY COUNTY



Source: University of Delaware Survey 1999



# 1999 DELAWARE ELEVENTH GRADERS WHO KNOW WHERE TO GET CIGARETTES, ALCOHOL & MARIJUANA BY COUNTY

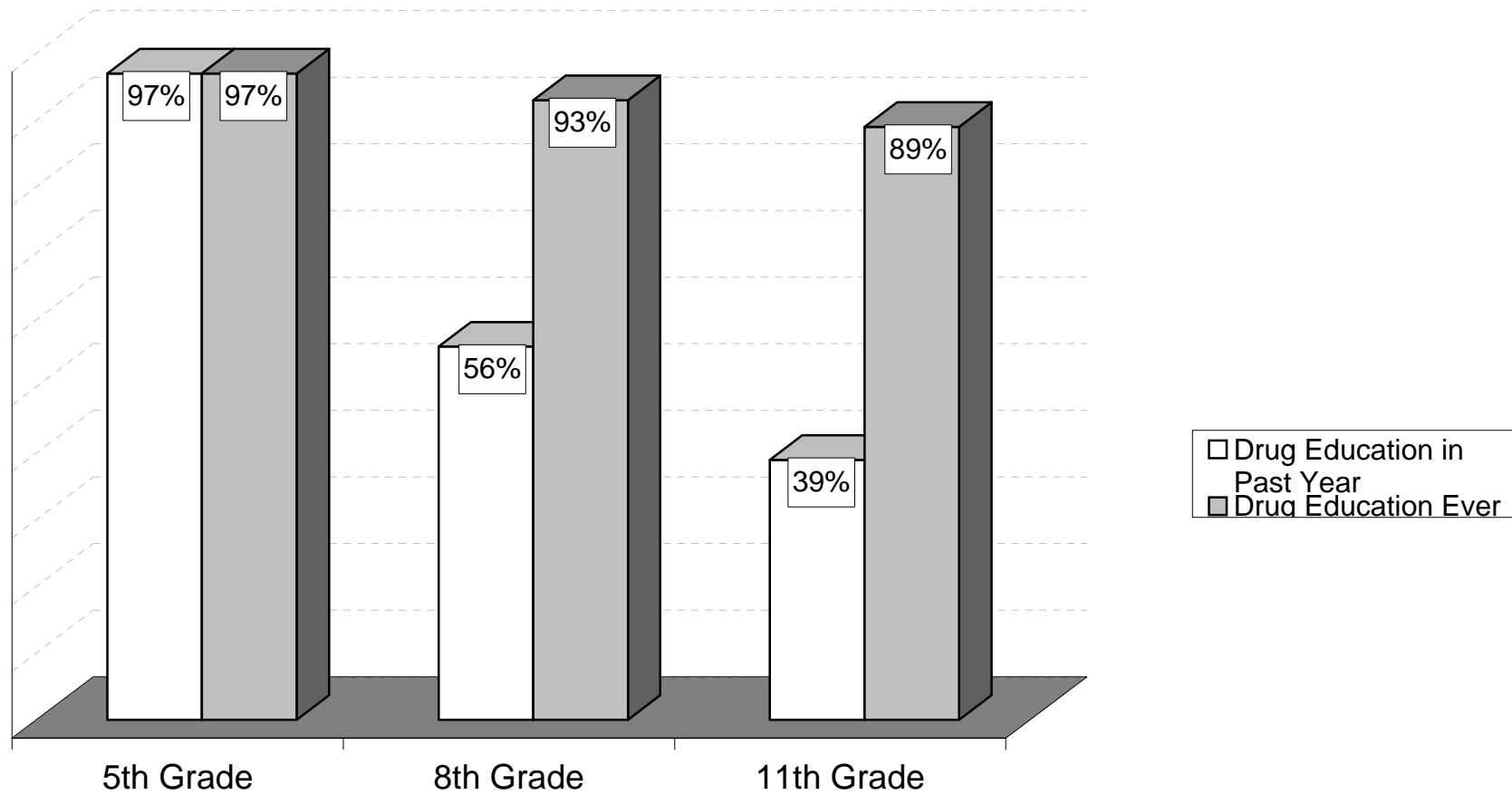


Source: University of Delaware Survey 1999





## PERCENT OF 1999 DELAWARE STUDENTS REPORTING DRUG EDUCATION, EVER AND PAST YEAR



Source: University of Delaware Survey 1999



**SUBSTANCE USE BY PEERS REPORTED BY 1999 DELAWARE FIFTH GRADERS**  
(percentage responding 'yes')

	<b>A lot of kids at school smoke cigarettes</b>	<b>A lot of kids at school drink alcohol</b>	<b>Any of your friends smoke cigarettes</b>	<b>Any of your friends drink alcohol</b>	<b>Any of your friends smoke marijuana</b>
<u>Statewide</u>	10	6	18	10	5
<u>Males</u>	10	6	19	12	6
<u>Females</u>	10	6	17	8	4
<u>New Castle</u>	7	5	17	9	5
<u>Males</u>	7	5	18	10	6
<u>Females</u>	6	4	15	7	4
<u>Kent</u>	15	8	21	11	5
<u>Males</u>	15	7	21	13	6
<u>Females</u>	15	10	21	9	3
<u>Sussex</u>	13	8	19	10	5
<u>Males</u>	14	7	21	13	6
<u>Females</u>	13	9	17	8	4

Source: University of Delaware Survey 1999

**SUBSTANCE USE BY PEERS REPORTED BY 1999 DELAWARE EIGHTH GRADERS**  
(percentages)

	<b>Most or all of the kids at school smoke cigarettes</b>	<b>Most or all of the kids at school get drunk at least once a week</b>	<b>Some of your friends smoke cigarettes</b>	<b>Some of your friends get drunk at least once a week</b>	<b>Some of your friends smoke marijuana</b>
<u>Statewide</u>	38	11	40	21	28
<u>Males</u>	33	10	39	20	30
<u>Females</u>	42	12	41	21	26
<u>New Castle</u>	40	12	41	21	32
<u>Males</u>	35	11	40	21	33
<u>Females</u>	45	13	42	21	30
<u>Kent</u>	32	9	36	18	19
<u>Males</u>	27	7	32	16	19
<u>Females</u>	36	10	38	19	19
<u>Sussex</u>	37	12	41	23	27
<u>Males</u>	35	11	42	23	32
<u>Females</u>	39	12	41	22	23

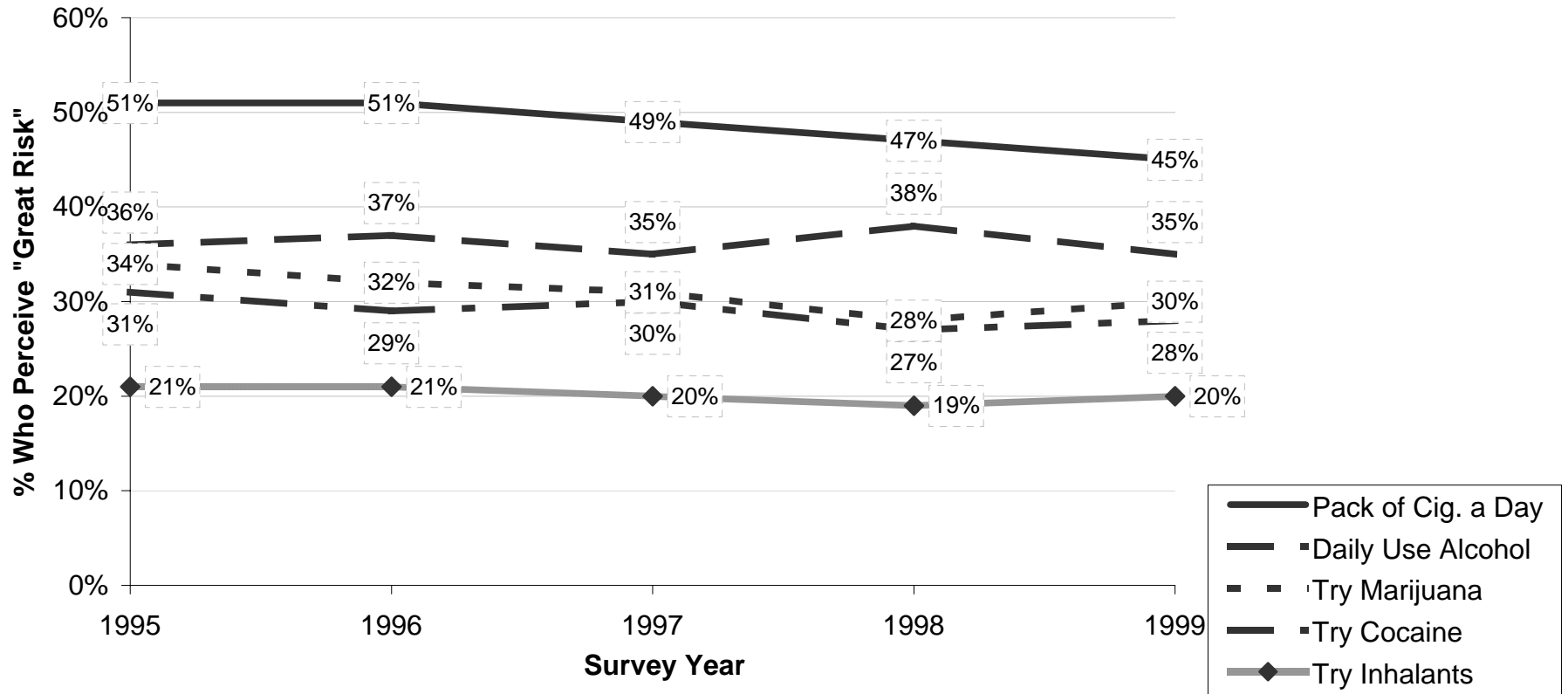
Source: University of Delaware Survey 1999

**SUBSTANCE USE BY PEERS AMONG 1999 DELAWARE ELEVENTH GRADERS**  
(Percentages)

	<b>Most or all of the kids at school smoke cigarettes</b>	<b>Most or all of the kids at school get drunk at least once a week</b>	<b>Some of your friends smoke cigarettes</b>	<b>Some of your friends get drunk at least once a week</b>	<b>Some of your friends smoke marijuana</b>
<u>Statewide</u>	60	42	56	50	50
<u>Males</u>	55	40	61	55	55
<u>Females</u>	64	44	52	45	45
<u>New Castle</u>	59	39	52	46	49
<u>Males</u>	56	37	57	51	55
<u>Females</u>	62	42	48	41	43
<u>Kent</u>	56	44	58	57	53
<u>Males</u>	53	44	64	64	58
<u>Females</u>	59	44	53	50	48
<u>Sussex</u>	68	47	63	53	51
<u>Males</u>	59	45	68	58	55
<u>Females</u>	77	49	59	50	47

Source: University of Delaware Survey 1999

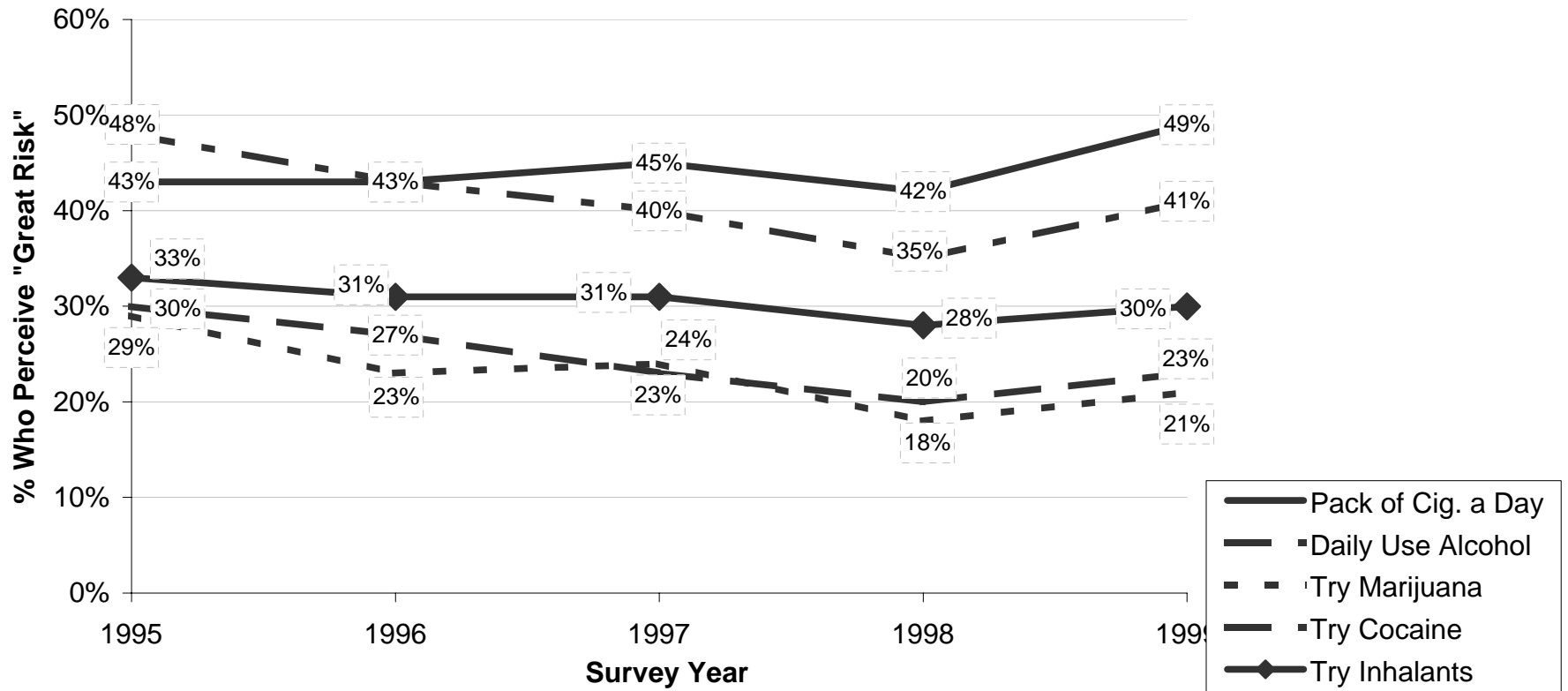
## TRENDS IN DELAWARE FIFTH GRADERS' PERCEPTIONS OF "GREAT RISK" IN SUBSTANCE USE



Source: University of Delaware Surveys 1995-1999



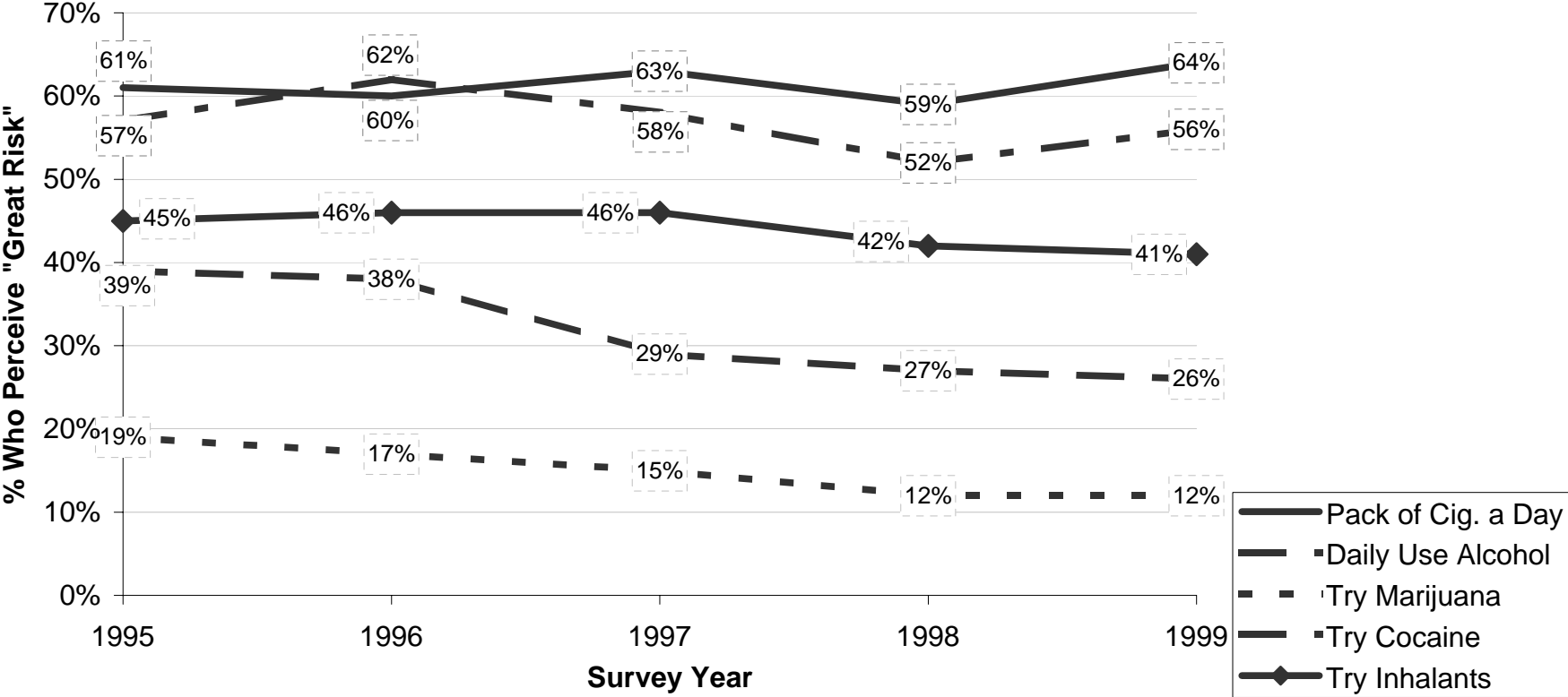
## TRENDS IN DELAWARE EIGHTH GRADERS' PERCEPTIONS OF "GREAT RISK" IN SUBSTANCE USE



Source: University of Delaware Surveys 1995-1999



## TRENDS IN DELAWARE ELEVENTH GRADERS' PERCEPTIONS OF "GREAT RISK" IN SUBSTANCE USE



Source: University of Delaware Surveys 1995-1999



**PERCEIVED RISK FOR MARIJUANA USE AMONG 1999 DELAWARE  
FIFTH GRADERS WHO HAVE NOT TRIED MARIJUANA**

(percentage reporting a little or a lot of perceived risk)

	<b>No harm from trying marijuana once or twice</b>	<b>Any of your friends smoke marijuana?</b>	<b>If a friend gave you some would you smoke it?<sup>a</sup></b>
<u>Statewide</u>	42	4	1
<u>Males</u>	46	5	1
<u>Females</u>	37	3	1
<u>New Castle</u>	42	4	1
<u>Males</u>	46	5	1
<u>Females</u>	37	3	1
<u>Kent</u>	43	4	1
<u>Males</u>	47	4	1
<u>Females</u>	38	3	-
<u>Sussex</u>	40	4	1
<u>Males</u>	44	5	-
<u>Females</u>	36	4	1

Note:           <sup>a</sup>(-) indicates less than one-half of one percent

Source:         University of Delaware Survey 1999



**RISK AND PROTECTIVE FACTORS FOR MARIJUANA USE AMONG  
1999 DELAWARE EIGHTH GRADERS WHO HAVE NOT TRIED MARIJUANA**  
(percentages)

	RISK FACTORS		PROTECTIVE FACTORS (top 3 reasons given for not using <sup>a</sup> )		
	Perceived no or slight risk from trying marijuana once or twice	Some of your friends smoke marijuana	Not healthy	Parents disapprove	Against my beliefs
<u>Statewide</u>	43	11	84	71	39
<u>Males</u>	43	11	81	71	40
<u>Females</u>	43	11	85	72	39
<u>New Castle</u>	45	14	84	71	37
<u>Males</u>	45	14	84	74	38
<u>Females</u>	46	13	84	69	36
<u>Kent</u>	38	7	84	73	44
<u>Males</u>	37	6	80	69	44
<u>Females</u>	38	8	87	77	44
<u>Sussex</u>	43	10	83	72	42
<u>Males</u>	45	13	78	67	41
<u>Females</u>	42	8	86	76	42

Note: <sup>a</sup>Students could check as many as apply from the following list: not healthy, makes you look and smell bad, don't like the taste, against my beliefs, parents would disapprove, friends would not like it, might lead to other drugs, too expensive.

Source: University of Delaware Survey 1999

**RISK AND PROTECTIVE FACTORS FOR MARIJUANA USE AMONG  
1999 DELAWARE ELEVENTH GRADERS WHO HAVE NOT TRIED MARIJUANA**  
(percentages)

	RISK FACTORS		PROTECTIVE FACTORS (top 3 reasons given for not using <sup>a</sup> )		
	Perceived no or slight risk from trying marijuana once or twice	Some of your friends smoke marijuana	Not healthy	Parents disapprove	Against my beliefs
<u>Statewide</u>	53	23	83	65	51
<u>Males</u>	54	25	81	63	49
<u>Females</u>	53	21	85	66	52
<u>New Castle</u>	55	22	83	61	49
<u>Males</u>	55	24	82	61	48
<u>Females</u>	55	20	85	61	49
<u>Kent</u>	52	26	83	70	51
<u>Males</u>	53	30	82	66	49
<u>Females</u>	52	22	84	73	52
<u>Sussex</u>	49	23	83	68	54
<u>Males</u>	50	24	80	66	51
<u>Females</u>	48	22	86	70	57

Note: <sup>a</sup>Students could check as many as apply from the following list: not healthy, makes you look and smell bad, don't like the taste, against my beliefs, parents would disapprove, friends would not like it, might lead to other drugs, too expensive.

Source: University of Delaware Survey 1999

## V. School Environment

Estimates by Gender and County of School Violence, School Safety and Student Comportment

Use of Ritalin and Other Prescribed Medications by 5th, 8th and 11th Graders

**SCHOOL FIGHTING REPORTED BY 1999 DELAWARE FIFTH GRADERS**  
 (percentage responding 'yes')

	<b>Fighting is a problem at this school</b>	<b>I've Been in a fight at school this year that I didn't start</b>
<u>Statewide</u>	54	39
<u>Males</u>	55	48
<u>Females</u>	53	29
<u>New Castle</u>	58	41
<u>Males</u>	58	49
<u>Females</u>	57	31
<u>Kent</u>	52	36
<u>Males</u>	53	45
<u>Females</u>	52	27
<u>Sussex</u>	46	36
<u>Males</u>	49	46
<u>Females</u>	42	27

Source: University of Delaware Survey 1999

**SCHOOL FIGHTING REPORTED BY 1999 DELAWARE EIGHTH GRADERS**  
 (percentage responding "often" or "most of the time")

	<b>Student violence is a problem at this school "some of the time" or more often</b>	<b>I Worry about being attacked or robbed during school or on school grounds "some of the time" or more often</b>	<b>I Took some kind of weapon to school or a school event this year</b>
<u>Statewide</u>	44	9	3
<u>Males</u>	46	9	5
<u>Females</u>	43	9	1
<u>New Castle</u>	45	8	3
<u>Males</u>	46	8	5
<u>Females</u>	43	8	1
<u>Kent</u>	46	9	2
<u>Males</u>	47	9	3
<u>Females</u>	45	10	1
<u>Sussex</u>	42	11	3
<u>Males</u>	43	12	5
<u>Females</u>	40	10	1

Source: University of Delaware Survey 1999

**SCHOOL FIGHTING REPORTED BY 1999 DELAWARE ELEVENTH GRADERS**  
 (percentage responding "often" or "most of the time")

	<b>Student violence is a problem at this school "some of the time" or more often</b>	<b>I Worry about being attacked or robbed during school or on school grounds "some of the time" or more often</b>	<b>I Took some kind of weapon to school or a school event this year</b>
<u>Statewide</u>	37	8	7
<u>Males</u>	37	7	11
<u>Females</u>	37	8	3
<u>New Castle</u>	41	7	6
<u>Males</u>	41	6	9
<u>Females</u>	41	6	9
<u>Kent</u>	32	7	8
<u>Males</u>	34	9	15
<u>Females</u>	30	5	2
<u>Sussex</u>	35	9	9
<u>Males</u>	34	9	14
<u>Females</u>	37	8	4

Source: University of Delaware Survey 1999

**PERCEPTIONS OF SCHOOL SAFETY REPORTED BY  
1999 DELAWARE FIFTH GRADERS**

(percentage responding 'yes')

	<b>I Feel safe in my school</b>	<b>I Stay away from parts of school to avoid trouble</b>	<b>I Worry about being attacked or robbed before or after school</b>	<b>Kids feel safe on the school bus</b>
<u>Statewide</u>	87	68	18	80
<u>Males</u>	86	64	17	79
<u>Females</u>	88	72	20	80
<u>New Castle</u>	86	66	18	78
<u>Males</u>	84	63	17	78
<u>Females</u>	87	70	19	79
<u>Kent</u>	87	70	22	78
<u>Males</u>	88	66	20	79
<u>Females</u>	86	74	23	78
<u>Sussex</u>	89	70	16	84
<u>Males</u>	89	65	14	84
<u>Females</u>	89	74	19	84

Source: University of Delaware Survey 1999







**PERCEIVED STUDENT BEHAVIOR REPORTED BY  
1999 DELAWARE FIFTH GRADERS**  
(percentage responding 'yes')

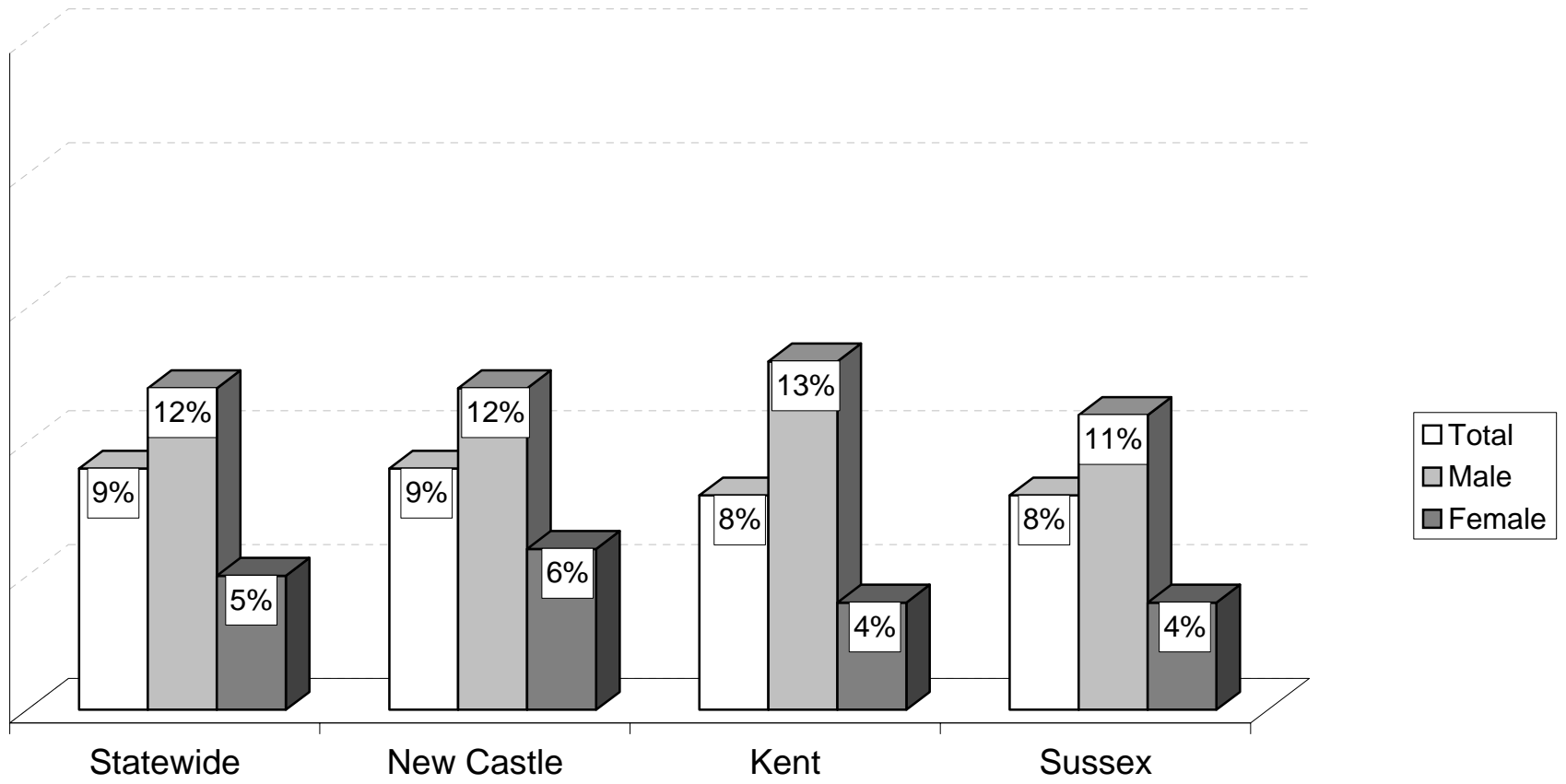
	<b>Most kids at this school obey the teachers</b>	<b>Kids at this school are well-behaved in class</b>	<b>Bad behavior of some kids at this school keep teachers from teaching kids who want to learn</b>
<u>Statewide</u>	71	55	78
<u>Males</u>	70	55	79
<u>Females</u>	72	54	78
<u>New Castle</u>	68	52	80
<u>Males</u>	67	52	81
<u>Females</u>	69	52	79
<u>Kent</u>	73	56	77
<u>Males</u>	73	55	75
<u>Females</u>	73	56	78
<u>Sussex</u>	78	61	75
<u>Males</u>	76	63	74
<u>Females</u>	80	59	75

Source: University of Delaware Survey 1998





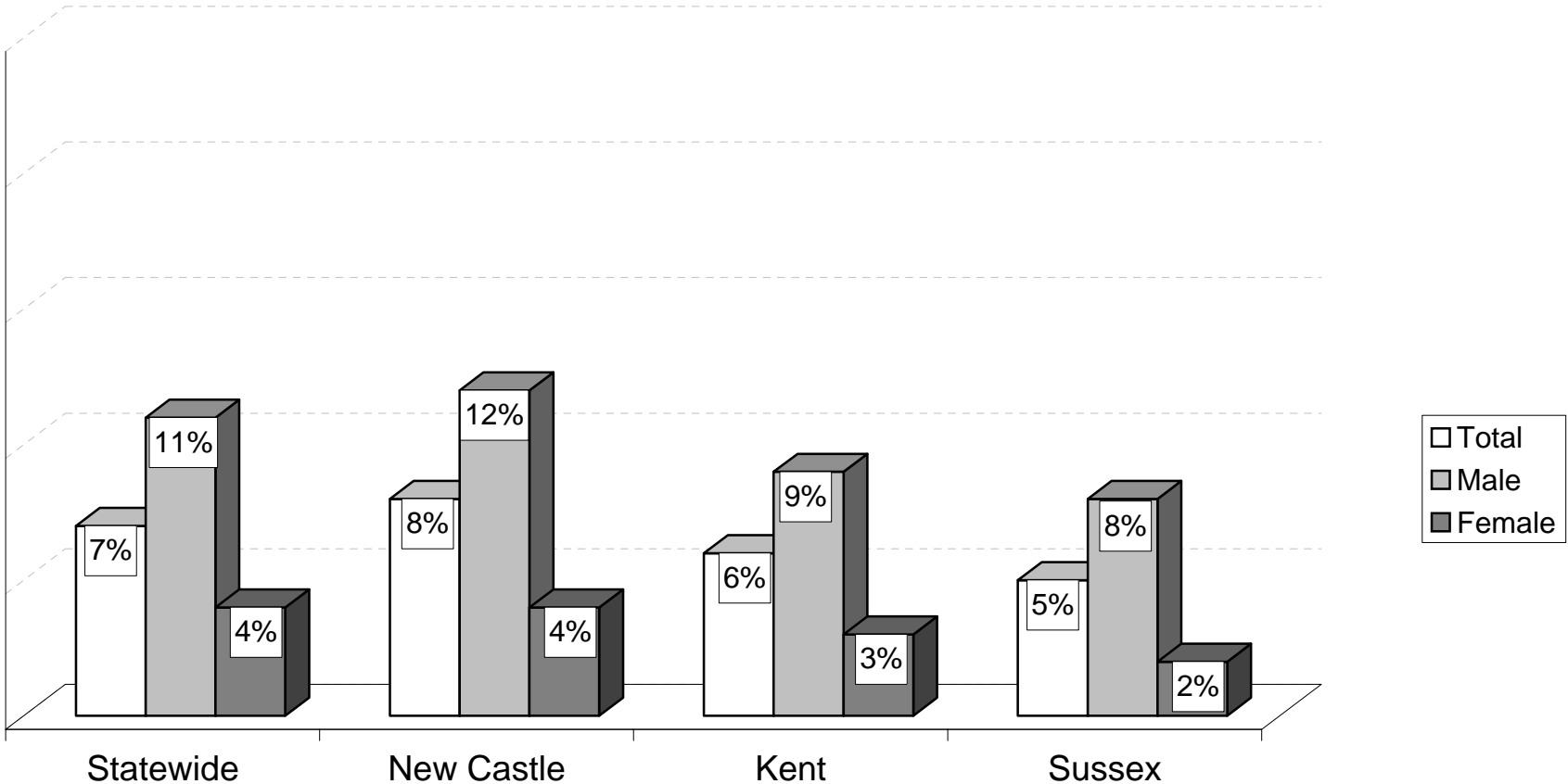
## PERCENT OF 1999 DELAWARE FIFTH GRADERS REPORTING CURRENT RITALIN OR PSYCHOACTIVE MEDICATION USE BY STATE AND COUNTY



Source: University of Delaware Survey 1999



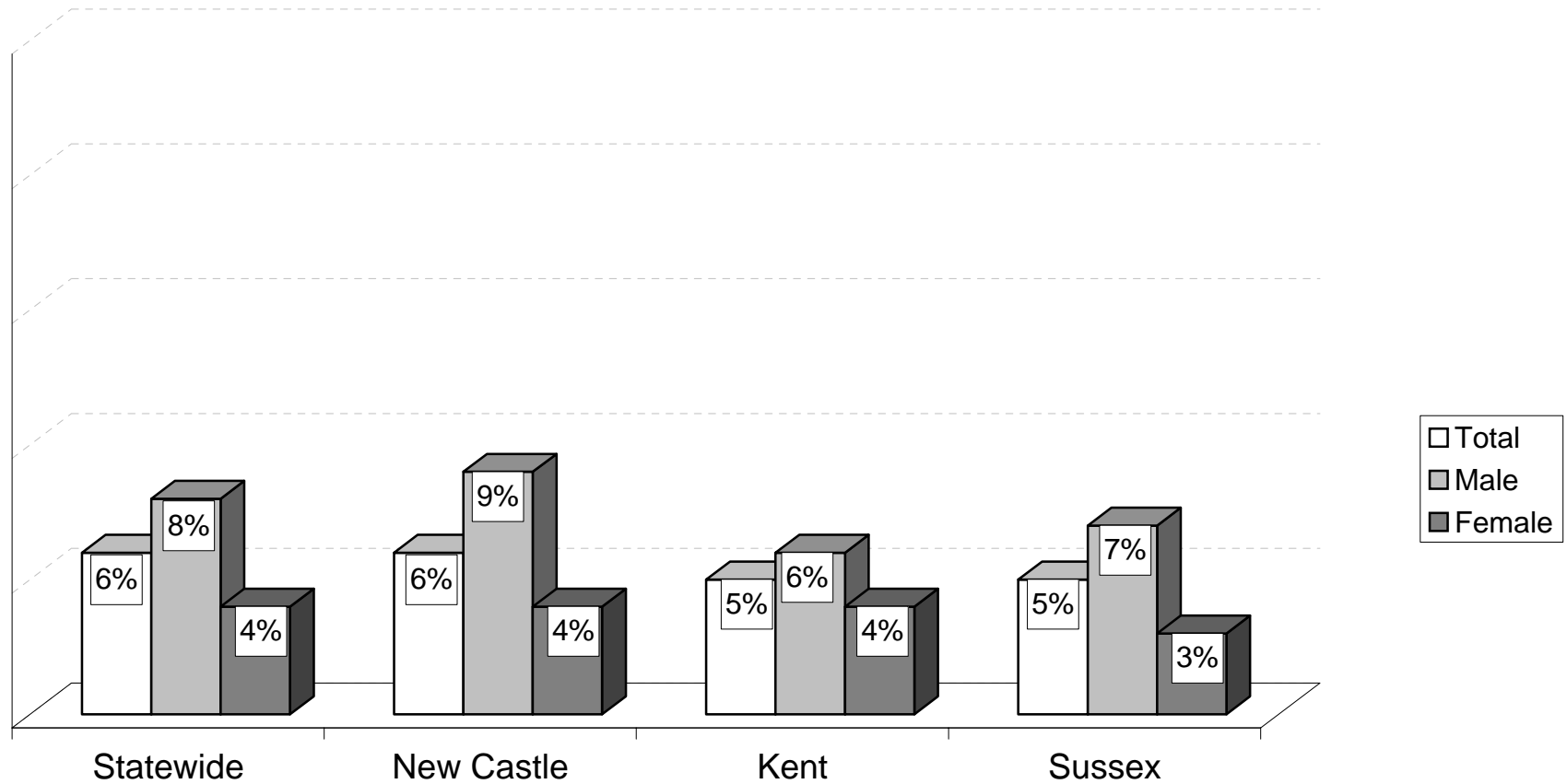
# PERCENT OF 1999 DELAWARE EIGHTH GRADERS REPORTING CURRENT RITALIN OR PSYCHOACTIVE MEDICATION USE BY STATE AND COUNTY



Source: University of Delaware Survey 1999



## PERCENT OF 1999 DELAWARE ELEVENTH GRADERS REPORTING CURRENT RITALIN OR PSYCHOACTIVE MEDICATION USE BY STATE AND COUNTY

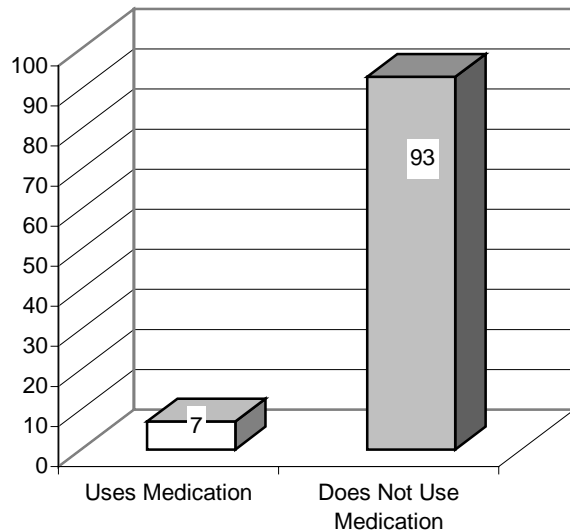


Source: University of Delaware Survey 1999

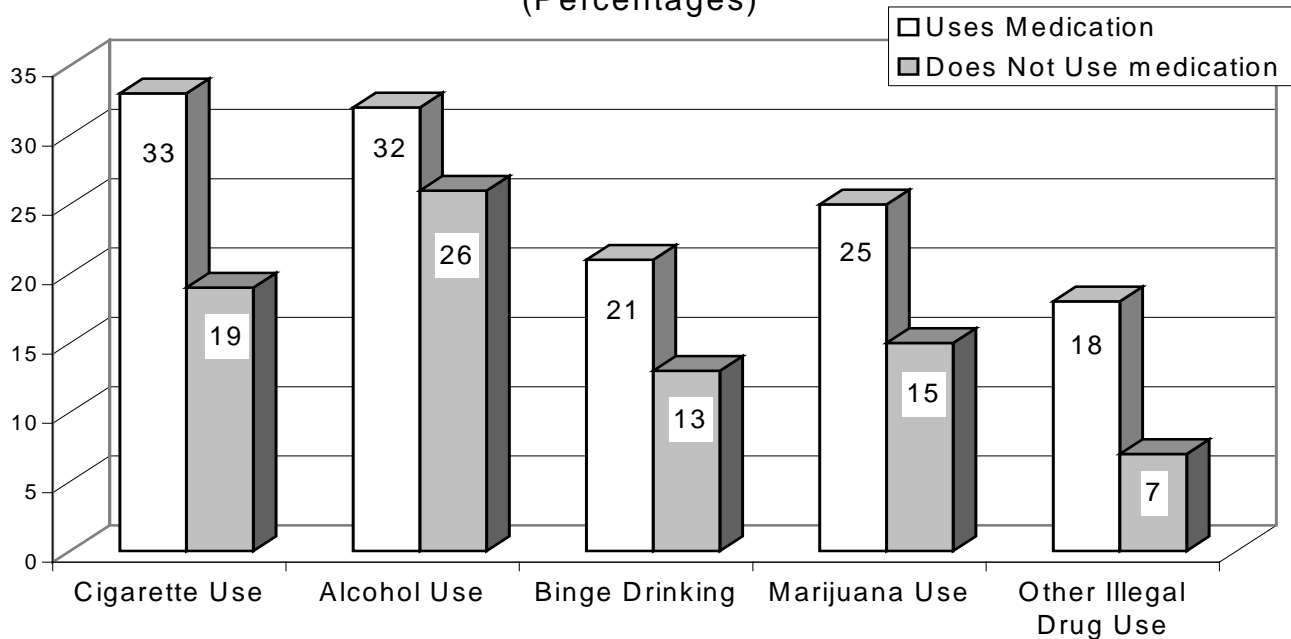
## Ritalin/ Psychoactive Medication & Other Drug Use Among 1999 Delaware 8<sup>th</sup> Graders

The table on the right shows that 7 percent of Delaware 8<sup>th</sup> graders report using Ritalin or other psychoactive medication during 1999. The table below shows that Delaware 8<sup>th</sup> graders who report using Ritalin or other psychoactive medication are more likely to be past month substance users. The difference between Ritalin users and non-users is statistically significant at  $p < .01$ .

Percent of 1999 Delaware 8th graders Who Use Ritalin or Other Psychoactive Medication



Past Month Substance Abuse Among 1999 Delaware 8th graders Who Use and Do Not Use Ritalin or Other Psychoactive Medication (Percentages)

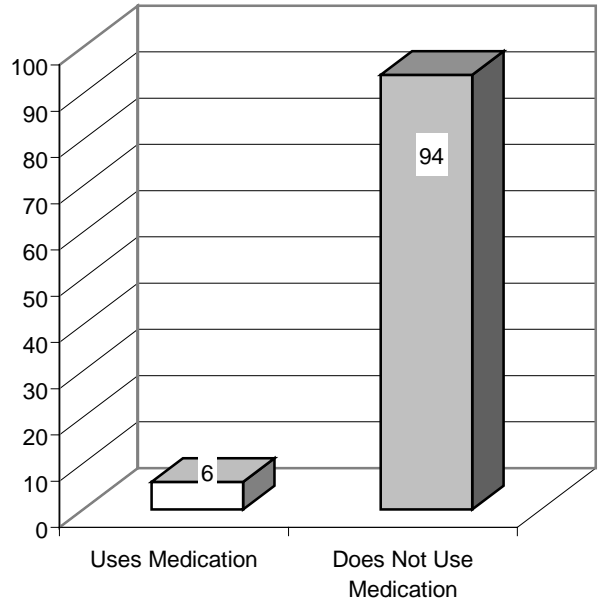




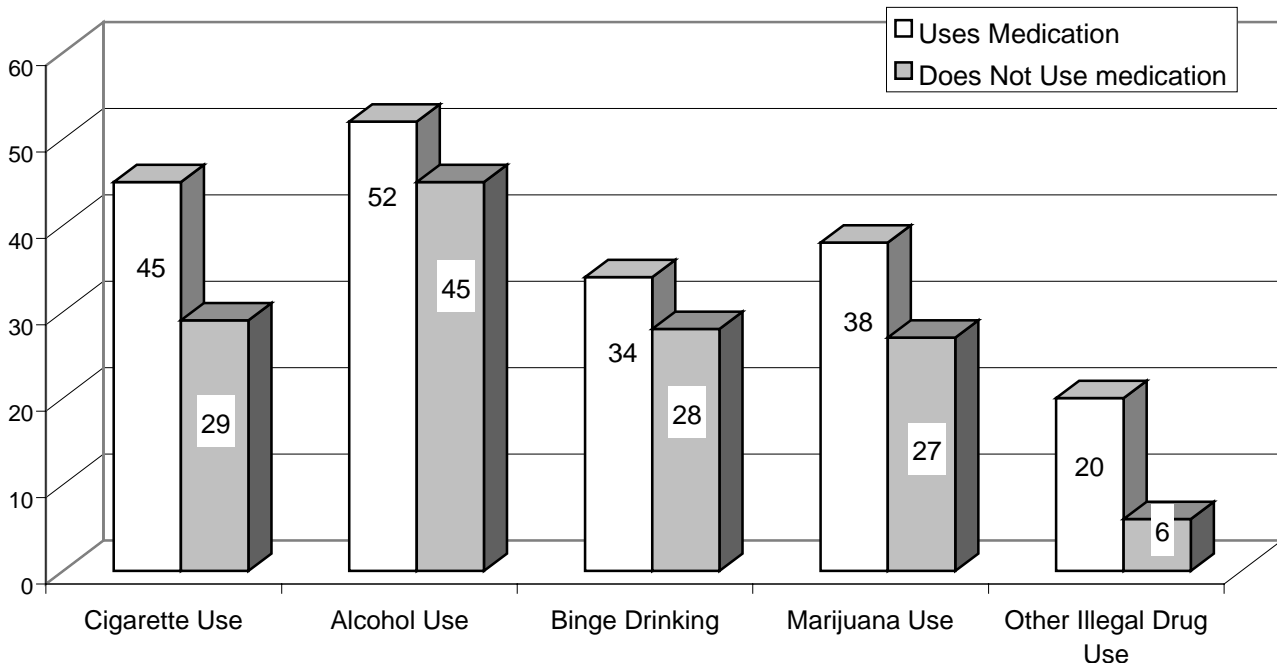
## Ritalin/ Psychoactive Medication & Other Drug Use Among 1999 Delaware 11<sup>th</sup> Graders

The table on the right shows that 6 percent of Delaware 11<sup>th</sup> graders report using Ritalin or other psychoactive medication during 1999. The table below shows that Delaware 11<sup>th</sup> grader who reported using Ritalin or other psychoactive medication are more likely to be past month substance users. The difference between Ritalin users and non-users is not statistically significant for past month alcohol use or binge drinking. The difference between users and non-users for the remaining measures, past month cigarette, marijuana and other drug use, are statistically significant at  $p < .01$ .

Percent of Delaware 11th Graders Who Use and Do Not Use Ritalin or Other Psychoactive Medication



Past Month Substance Abuse Among 1999 Delaware 11th Graders Who Use and Do Not Use Ritalin or Other Psychoactive Medication (Percentages)



## VI. Other Risk Behaviors and Consequences

Estimates by Gender and County of Lifetime, Past Year and Past Month Riding in a Car with a Driver Who Has Been Drinking or Using Marijuana, 1999 8th and 11th Graders

Trends over Time in Report of Past Month Drinking and Driving and of Past Month Marijuana Use and Driving, 1989-1999 11th Graders

Estimates by Gender and County of Lifetime, Past Year and Past Month Drinking and Driving and Marijuana Use and Driving, 1999 11th Graders

Past Month Drug Use in Relation to Past Year Report of Delinquent Behaviors, 1999 8th and 11th Graders

Estimates of Gambling in Relation to Drug Use, 1999 8th and 11th Graders

**1995 AND 1999 DELAWARE EIGHTH GRADERS' REPORTS OF  
RIDING IN A CAR WITH A DRINKING DRIVER**

(percentages)

	IN LIFETIME		IN PAST YEAR		IN PAST MONTH	
	1995	1999	1995	1999	1995	1999
<u>Statewide</u>	43	41	28	25	15	13
<u>Males</u>	44	41	29	26	15	14
<u>Females</u>	42	40	26	25	15	12
<u>New Castle</u>	40	40	26	25	13	13
<u>Males</u>	39	40	25	25	11	13
<u>Females</u>	42	40	26	25	14	12
<u>Kent</u>	47	41	31	23	19	11
<u>Males</u>	56	41	42	25	24	13
<u>Females</u>	39	40	21	23	15	11
<u>Sussex</u>	46	43	31	28	18	15
<u>Males</u>	46	45	30	28	17	15
<u>Females</u>	47	41	32	27	19	14

Source: University of Delaware Surveys 1995, 1999

**1995 AND 1999 DELAWARE EIGHTH GRADERS' REPORTS OF  
RIDING IN A CAR WITH A MARIJUANA USING DRIVER**  
(percentages)

	IN LIFETIME		IN PAST YEAR		IN PAST MONTH	
	1995	1999	1995	1999	1995	1999
<u>Statewide</u>	25	26	19	18	12	11
<u>Males</u>	25	26	20	18	13	11
<u>Females</u>	26	26	18	17	10	10
<u>New Castle</u>	25	28	18	19	10	12
<u>Males</u>	25	28	19	19	11	11
<u>Females</u>	26	27	18	19	10	11
<u>Kent</u>	20	22	14	14	11	8
<u>Males</u>	25	21	20	14	14	8
<u>Females</u>	16	22	10	14	8	7
<u>Sussex</u>	30	26	24	17	15	11
<u>Males</u>	26	26	21	19	15	13
<u>Females</u>	35	25	26	16	15	9

Source: University of Delaware Surveys 1995, 1999

**1995 AND 1999 DELAWARE ELEVENTH GRADERS' REPORTS OF  
RIDING IN A CAR WITH A DRINKING DRIVER**  
(percentages)

	IN LIFETIME		IN PAST YEAR		IN PAST MONTH	
	1995	1999	1995	1999	1995	1999
<u>Statewide</u>	43	48	30	33	14	15
<u>Males</u>	43	49	30	36	16	18
<u>Females</u>	43	46	30	30	12	11
<u>New Castle</u>	38	44	25	30	10	13
<u>Males</u>	37	45	25	32	12	16
<u>Females</u>	38	43	25	28	9	10
<u>Kent</u>	50	51	38	35	20	16
<u>Males</u>	50	52	36	38	20	21
<u>Females</u>	50	50	39	32	19	11
<u>Sussex</u>	49	52	35	38	16	17
<u>Males</u>	52	54	40	42	21	22
<u>Females</u>	46	50	31	34	13	12

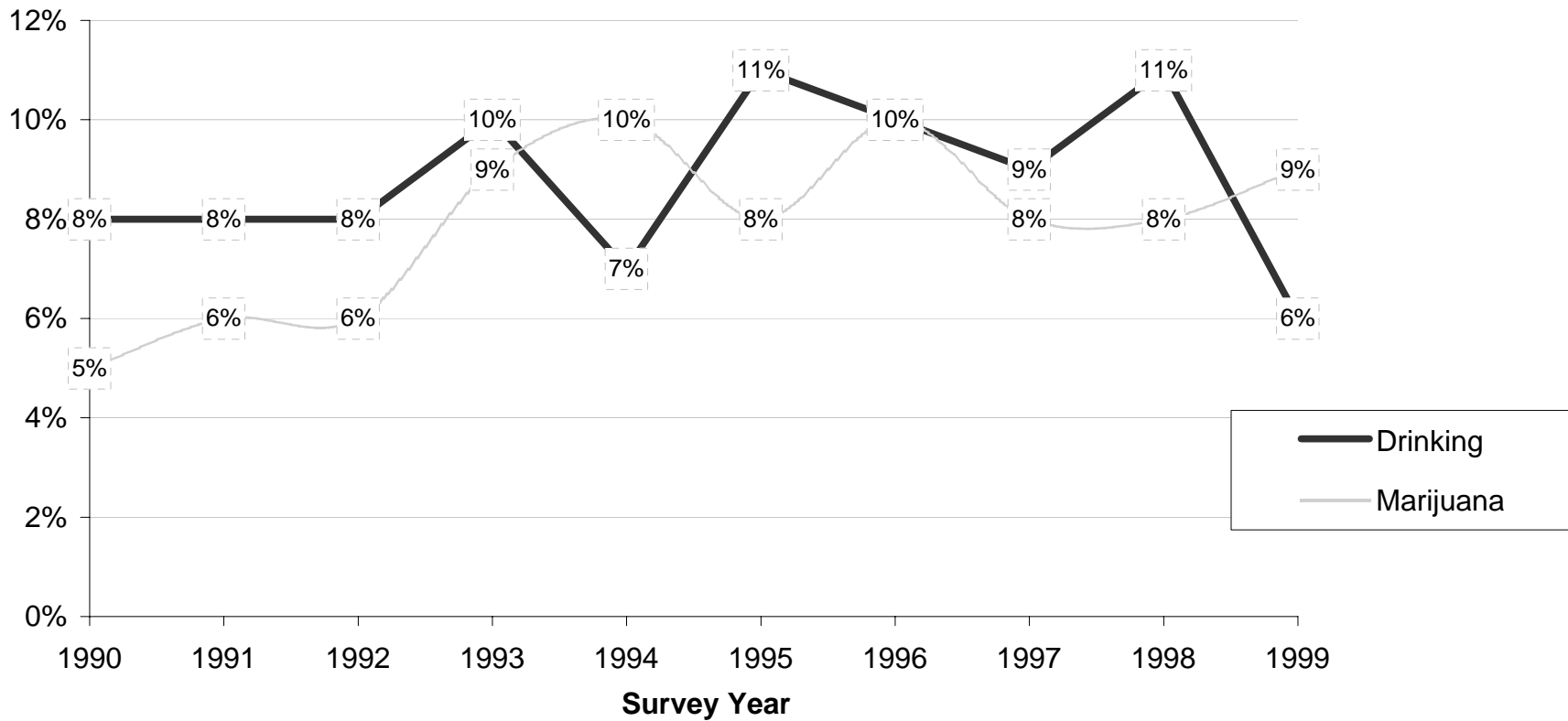
Source: University of Delaware Surveys 1995, 1999

**1995 AND 1999 DELAWARE ELEVENTH GRADERS' REPORTS OF  
RIDING IN A CAR WITH A MARIJUANA USING DRIVER**  
(percentages)

	IN LIFETIME		IN PAST YEAR		IN PAST MONTH	
	1995	1999	1995	1999	1995	1999
<u>Statewide</u>	40	49	33	38	19	22
<u>Males</u>	46	51	37	40	24	26
<u>Females</u>	36	48	30	35	15	18
<u>New Castle</u>	42	48	35	37	20	20
<u>Males</u>	47	50	39	38	25	24
<u>Females</u>	38	47	32	35	15	17
<u>Kent</u>	41	48	33	36	20	22
<u>Males</u>	43	50	34	41	25	28
<u>Females</u>	39	46	32	33	18	16
<u>Sussex</u>	35	53	26	40	14	25
<u>Males</u>	44	54	33	42	20	29
<u>Females</u>	29	51	22	38	10	20

Source: University of Delaware Surveys 1995, 1999

## TRENDS IN DELAWARE ELEVENTH GRADERS' REPORT OF DRINKING AND DRIVING AND REPORT OF SMOKING MARIJUANA AND DRIVING, 1990-1999



Source: Data Base/ DiagnosticsPlus (1990 - 1993); Department of Public Instruction 1994; University of Delaware Surveys 1995



**1995 AND 1999 DELAWARE ELEVENTH GRADERS'  
REPORT OF DRINKING AND DRIVING**  
(percentages)

	IN LIFETIME		IN PAST YEAR		IN PAST MONTH	
	1995	1999	1995	1999	1995	1999
<u>Statewide</u>	28	23	22	16	11	6
<u>Males</u>	34	27	28	19	14	8
<u>Females</u>	24	20	18	13	9	4
<u>New Castle</u>	26	20	20	14	10	5
<u>Males</u>	32	24	25	18	12	7
<u>Females</u>	22	17	17	11	9	3
<u>Kent</u>	32	26	27	18	16	9
<u>Males</u>	34	29	32	22	19	13
<u>Females</u>	31	23	24	15	13	6
<u>Sussex</u>	28	28	21	19	10	7
<u>Males</u>	42	31	31	20	14	9
<u>Females</u>	19	25	15	18	6	6

Source: University of Delaware Surveys 1995, 1999

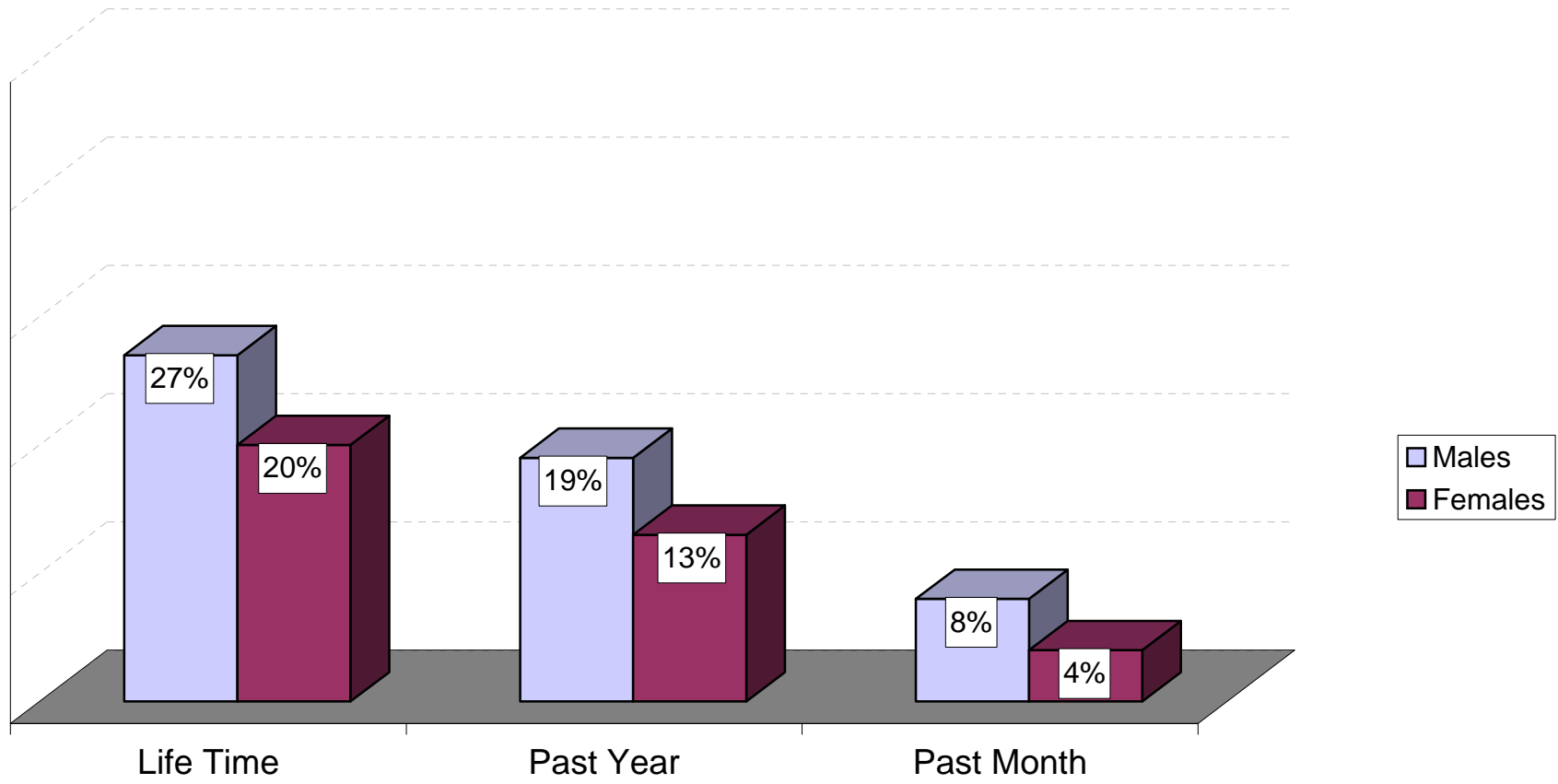


**1995 AND 1999 DELAWARE ELEVENTH GRADERS'  
REPORT OF SMOKING MARIJUANA AND DRIVING**  
(percentages)

	IN LIFETIME		IN PAST YEAR		IN PAST MONTH	
	1995	1999	1995	1999	1995	1999
<u>Statewide</u>	20	24	16	18	8	9
<u>Males</u>	26	26	22	22	12	12
<u>Females</u>	16	21	12	15	5	6
<u>New Castle</u>	23	22	18	17	8	9
<u>Males</u>	30	25	24	21	12	13
<u>Females</u>	18	17	13	13	6	6
<u>Kent</u>	21	24	17	18	10	8
<u>Males</u>	24	28	21	24	16	13
<u>Females</u>	20	21	14	14	5	5
<u>Sussex</u>	12	27	9	20	6	9
<u>Males</u>	18	28	16	23	10	11
<u>Females</u>	9	25	5	18	3	8

Source: University of Delaware Survey 1995, 1999

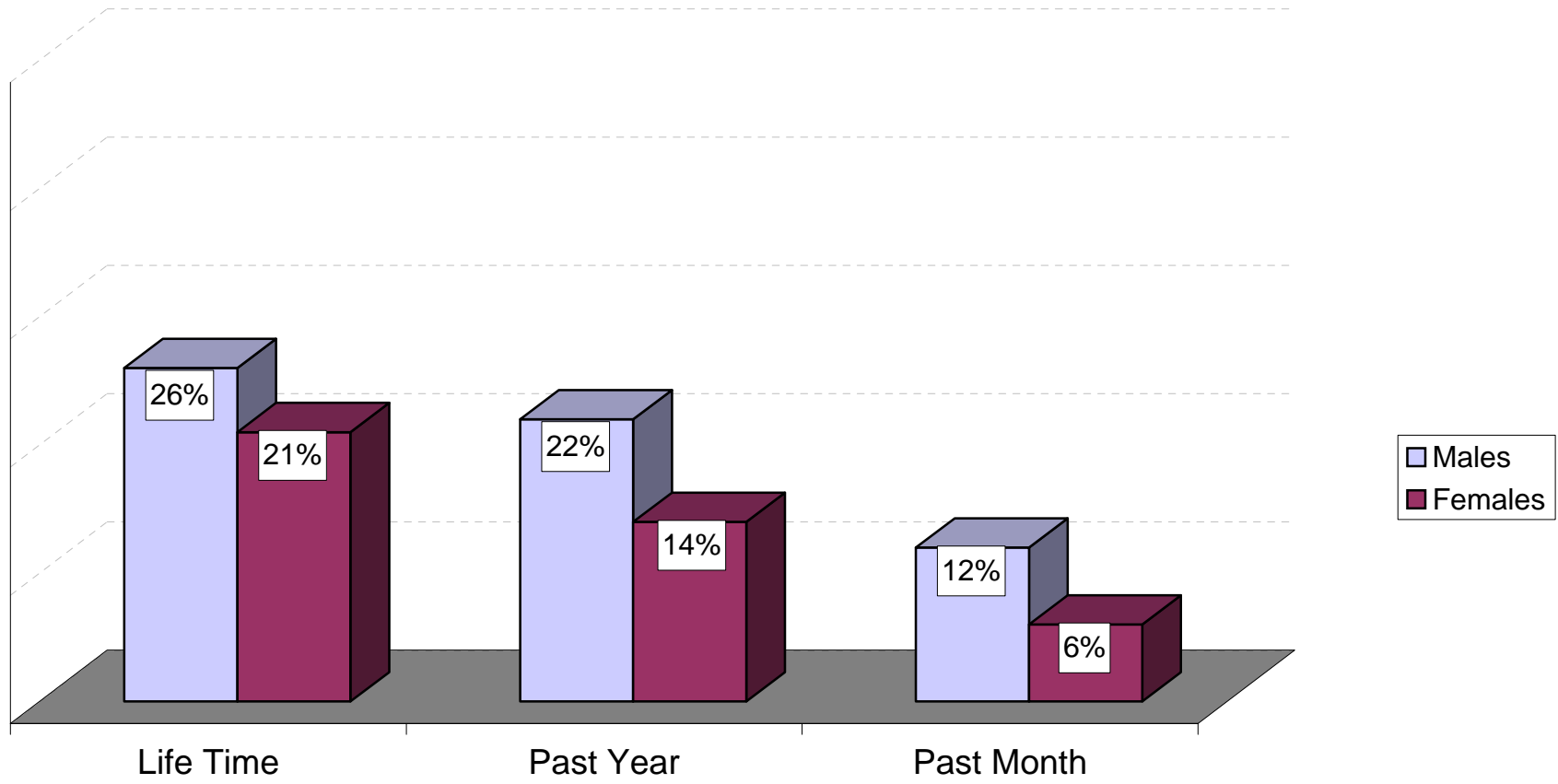
## 1999 DELAWARE ELEVENTH GRADERS WHO REPORT DRINKING AND DRIVING



Source: University of Delaware Survey 1999



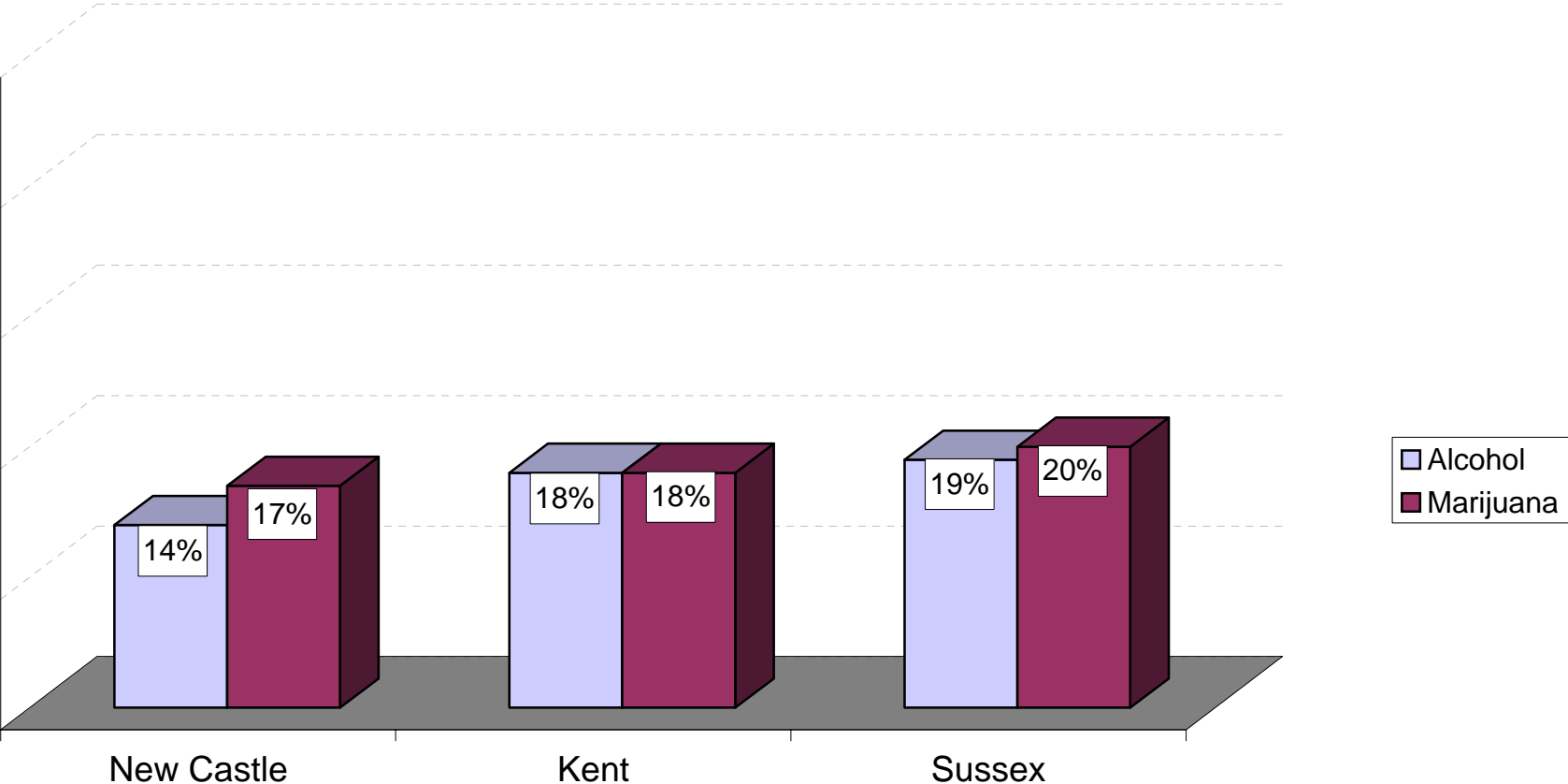
## 1999 DELAWARE ELEVENTH GRADERS WHO REPORT MARIJUANA USE AND DRIVING



Source: University of Delaware Survey 1999



**1999 DELAWARE ELEVENTH GRADERS  
WHO REPORT SUBSTANCE USE AND DRIVING BY COUNTY**



Source: University of Delaware Survey 1999



**PAST MONTH SUBSTANCE USE AMONG 1999 DELAWARE EIGHTH GRADERS  
BY PAST YEAR DELINQUENT ACTIVITIES**

(percentages)

	<b>COMMITTED ACT IN PAST YEAR</b>											
	<b>In a Group Fight</b>		<b>Steal from Store</b>		<b>Illegal Entry</b>		<b>Trouble with Police</b>		<b>Skip School</b>		<b>Steal money from Adult</b>	
<u>Past Month Cigarette Use</u>	Yes ***	No	Yes ***	No	Yes ***	No	Yes ***	No	Yes ***	No	Yes ***	No
<u>Yes</u>	42	14	49	14	40	15	54	16	49	14	45	16
<u>No</u>	58	86	51	86	60	85	46	84	51	86	55	84
<u>Past Month Alcohol Use</u>	Yes ***	No	Yes ***	No	Yes ***	No	Yes ***	No	Yes ***	No	Yes ***	No
<u>Yes</u>	48	20	54	20	48	19	60	22	54	20	53	21
<u>No</u>	52	80	46	80	52	81	40	78	46	80	47	79
<u>Past Month Marijuana Use</u>	Yes ***	No	Yes ***	No	Yes ***	No	Yes ***	No	Yes ***	No	Yes ***	No
<u>Yes</u>	38	10	42	10	34	11	53	12	45	10	35	13
<u>No</u>	62	90	58	90	66	89	47	88	55	90	65	87
<b>Total Percent</b>	22	78	17	83	22	78	10	90	17	83	13	87

Note: \*\*\*p < .001, corrected for continuity

Source: University of Delaware Survey 1999

**PAST MONTH SUBSTANCE USE AMONG 1999 DELAWARE ELEVENTH GRADERS  
BY PAST YEAR DELINQUENT ACTIVITIES**

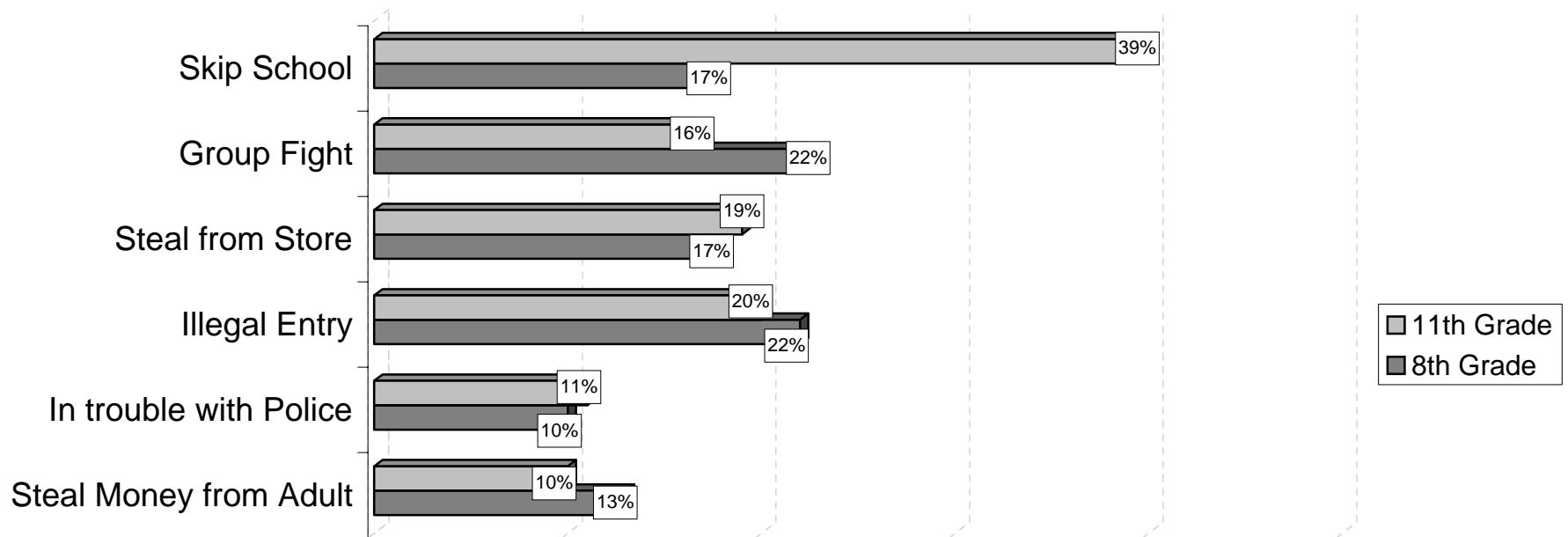
(percentages)

	<b>COMMITTED ACT IN PAST YEAR</b>											
	<b>In a Group Fight</b>		<b>Steal from Store</b>		<b>Illegal Entry</b>		<b>Trouble with Police</b>		<b>Skip School</b>		<b>Steal money from Adult</b>	
<u>Past Month Cigarette Use</u>	Yes ***	No	Yes ***	No	Yes ***	No	Yes ***	No	Yes ***	No	Yes ***	No
<u>Yes</u>	50	27	53	25	49	26	58	27	49	19	56	28
<u>No</u>	49	73	47	75	51	74	42	73	51	81	44	72
<u>Past Month Alcohol Use</u>	Yes ***	No	Yes ***	No	Yes ***	No	Yes ***	No	Yes ***	No	Yes ***	No
<u>Yes</u>	71	41	68	40	68	40	73	42	65	33	66	43
<u>No</u>	29	59	32	60	32	60	27	58	35	67	34	57
<u>Past Month Marijuana Use</u>	Yes ***	No	Yes ***	No	Yes ***	No	Yes ***	No	Yes ***	No	Yes ***	No
<u>Yes</u>	57	23	55	22	51	23	61	25	48	16	47	27
<u>No</u>	43	77	45	78	49	77	39	75	52	84	53	73
Total Percent	16	84	19	81	20	80	11	89	39	61	10	90

Note: \*\*\*p < .001, corrected for continuity

Source: University of Delaware Survey 1999

## PAST DELINQUENT BEHAVIOR REPORTED BY 1999 DELAWARE EIGHTH AND ELEVENTH GRADERS



Source: University of Delaware Survey 1999



**PAST YEAR GAMBLING AMONG DELAWARE EIGHTH GRADERS 1999**  
(percentages)

	<b>None</b>	<b>A few Times</b> (7-11 times)	<b>Monthly</b> (12-50 times)	<b>Weekly</b> (more than 50 times) <sup>a</sup>
<u>Statewide</u>	69	26	4	2
<u>Males</u>	56	34	7	3
<u>Females</u>	80	18	2	-
<u>New Castle</u>	65	28	4	2
<u>Males</u>	52	36	7	4
<u>Females</u>	77	21	2	1
<u>Kent</u>	73	22	4	1
<u>Males</u>	58	33	7	2
<u>Females</u>	84	14	1	-
<u>Sussex</u>	75	21	3	1
<u>Males</u>	65	27	5	2
<u>Females</u>	84	14	2	-

Note:           <sup>a</sup>(-) indicates less than one-half of one percent

Source:         University of Delaware Survey 1999



**PAST YEAR GAMBLING AMONG DELAWARE ELEVENTH GRADERS 1999**  
(percentages)

	<b>None</b>	<b>A few Times</b> (7-11 times)	<b>Monthly</b> (12-50 times)	<b>Weekly</b> (more than 50 times) <sup>a</sup>
<u>Statewide</u>	74	21	4	2
<u>Males</u>	59	32	6	3
<u>Females</u>	88	11	1	-
<u>New Castle</u>	74	21	3	2
<u>Males</u>	58	33	6	3
<u>Females</u>	88	11	1	-
<u>Kent</u>	75	19	4	2
<u>Males</u>	61	28	7	4
<u>Females</u>	88	12	1	-
<u>Sussex</u>	73	20	4	2
<u>Males</u>	58	31	7	4
<u>Females</u>	88	10	1	-

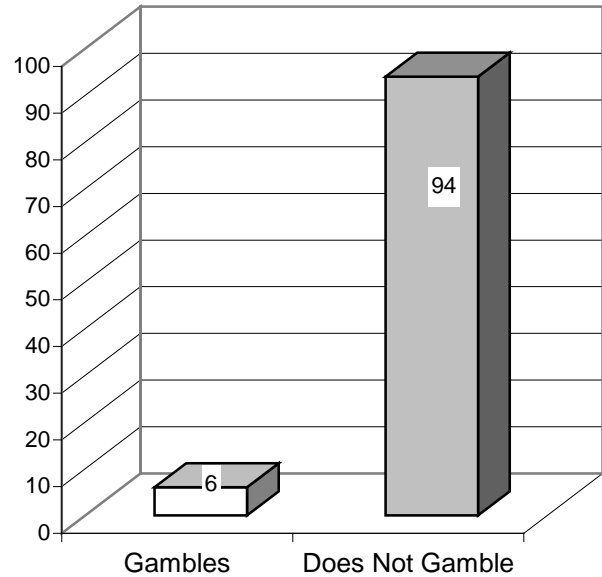
Note:           <sup>a</sup>(-) indicates less than one-half of one percent

Source:         University of Delaware Survey 1999

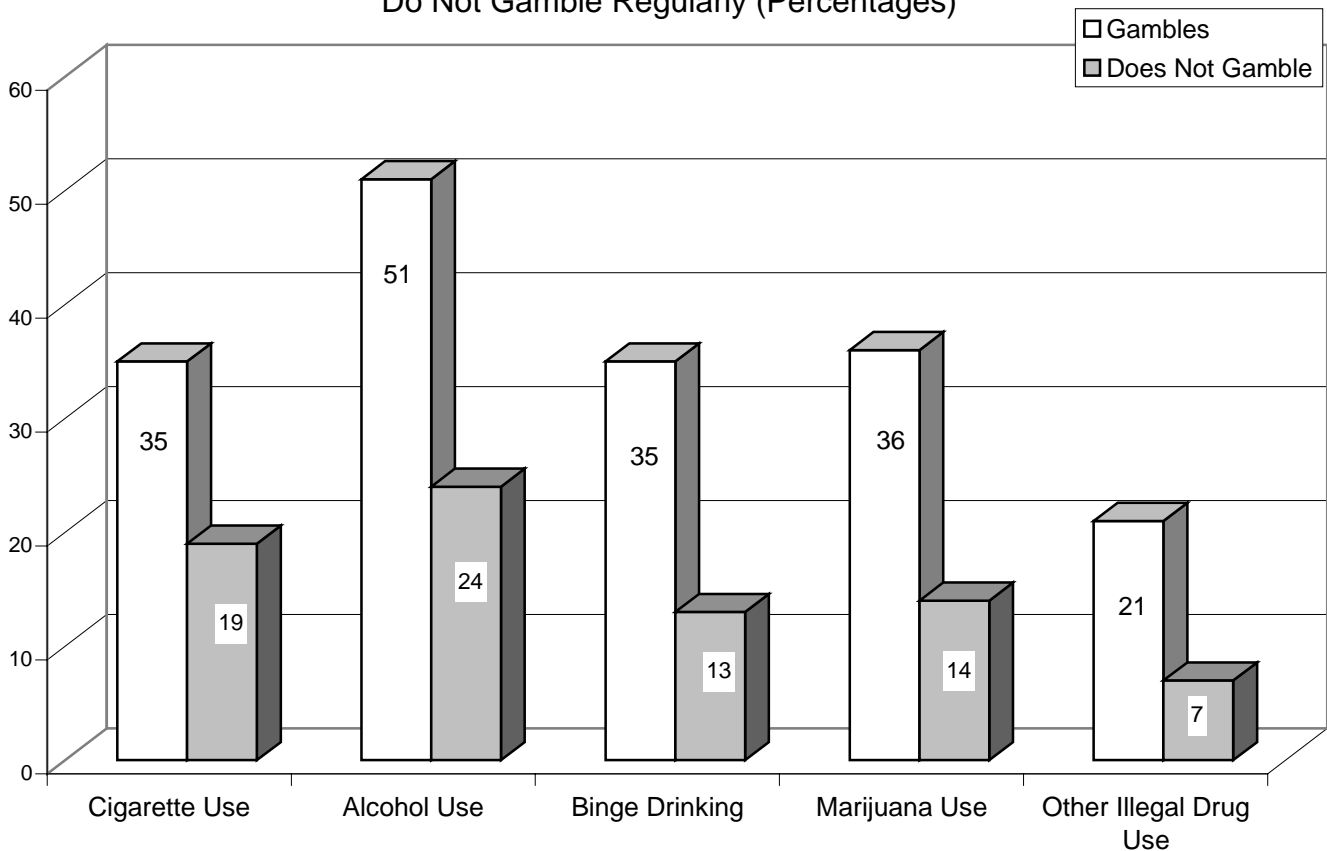
## Gambling & Drug Abuse Among 1999 Delaware 8<sup>th</sup> Graders

The table on the right shows that 6 percent of Delaware 8<sup>th</sup> graders gamble regularly (defined as 12 or more time per year). The table below shows that Delaware 8<sup>th</sup> graders who report gambling regularly during the part year are more likely to be past month substance abusers. The differences between gamblers and non-gamblers are significant at  $p < .01$  for all substance abuse measures.

Percent of 1999 Delaware 8<sup>th</sup> Graders Who Gamble Regularly



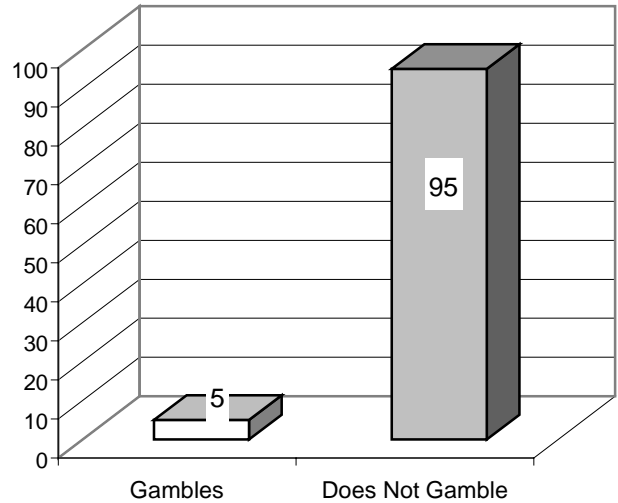
Past Month Substance Abuse Among 1999 Delaware 8<sup>th</sup> Graders Who Do and Do Not Gamble Regularly (Percentages)



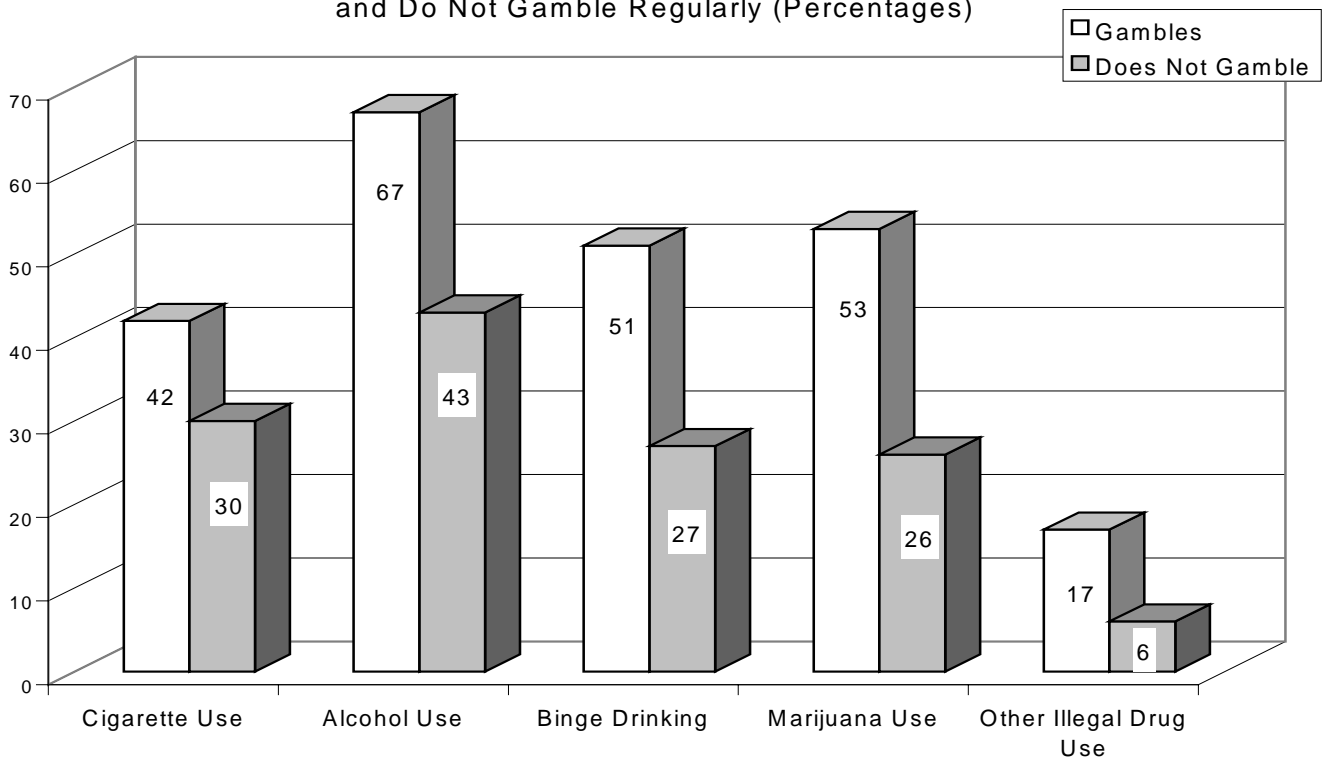
## Gambling & Drug Abuse Among 1999 Delaware 11<sup>th</sup> Graders

The table on the right shows that 5 percent of Delaware 11<sup>th</sup> graders gamble regularly (defined as 12 or more times per year). The table below shows that Delaware 11th graders who reported gambling regularly during the past year are more likely to be past month substance abusers. The differences between gamblers and non-gamblers are statistically significant at  $p < .01$  for all substance abuse measures.

Percent of 1999 Delaware 11th Graders Who Gamble Regularly



Past Month Substance Abuse Among 1999 Delaware 11th Graders Who Do and Do Not Gamble Regularly (Percentages)



## VII. Parental Involvement and Students' Substance Use

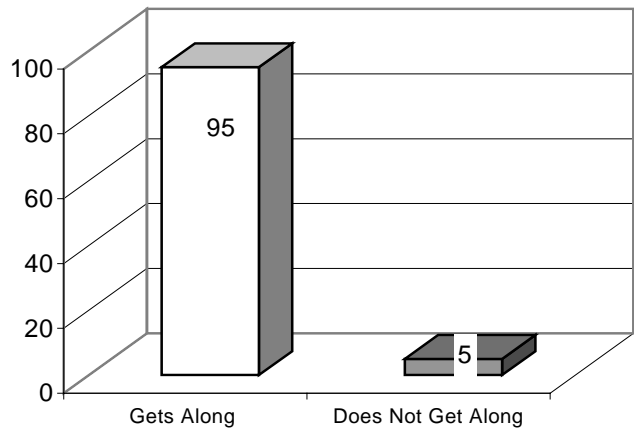
Get Along with Parents, Argue with Parents, Talk to Parents, Parents Volunteer at School and Students' Drug Use

Household Members' Smoking and Students' Drug Use

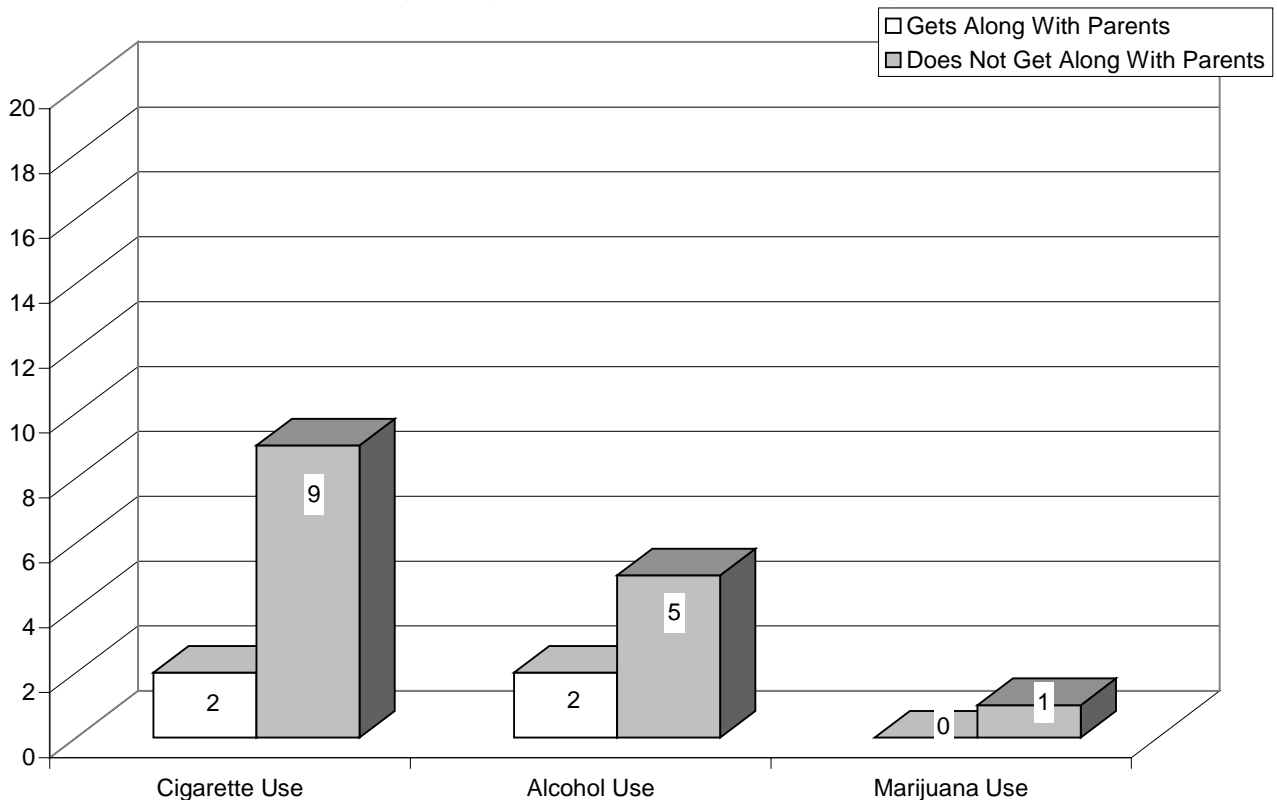
## Getting Along Well With Parents and Past Month Substance Use Among 1999 Delaware 5<sup>th</sup> Graders

The table on the right shows the percent of 1999 Delaware 5<sup>th</sup> graders who report getting along with their parents. The table below shows that those who report getting along with their parents use substances less than those who report not getting along with their parents. The differences are significant at  $p < .01$  for all substance abuse measures

Percent of 1999 Delaware 5<sup>th</sup> Graders Who Get Along Well With Parents



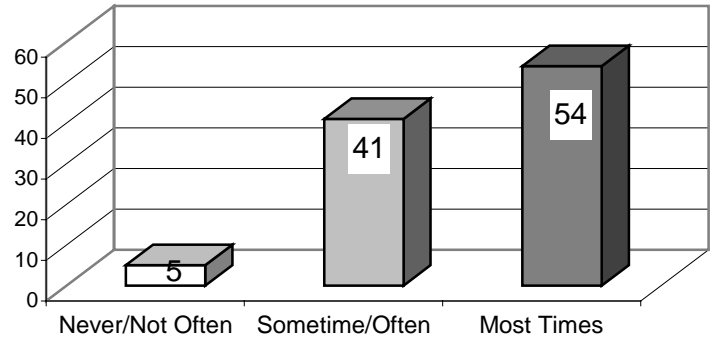
**Past Month Substance Abuse Among 1999 Delaware 5<sup>th</sup> Graders Reporting Getting Along Well With Parents (Percentages)**



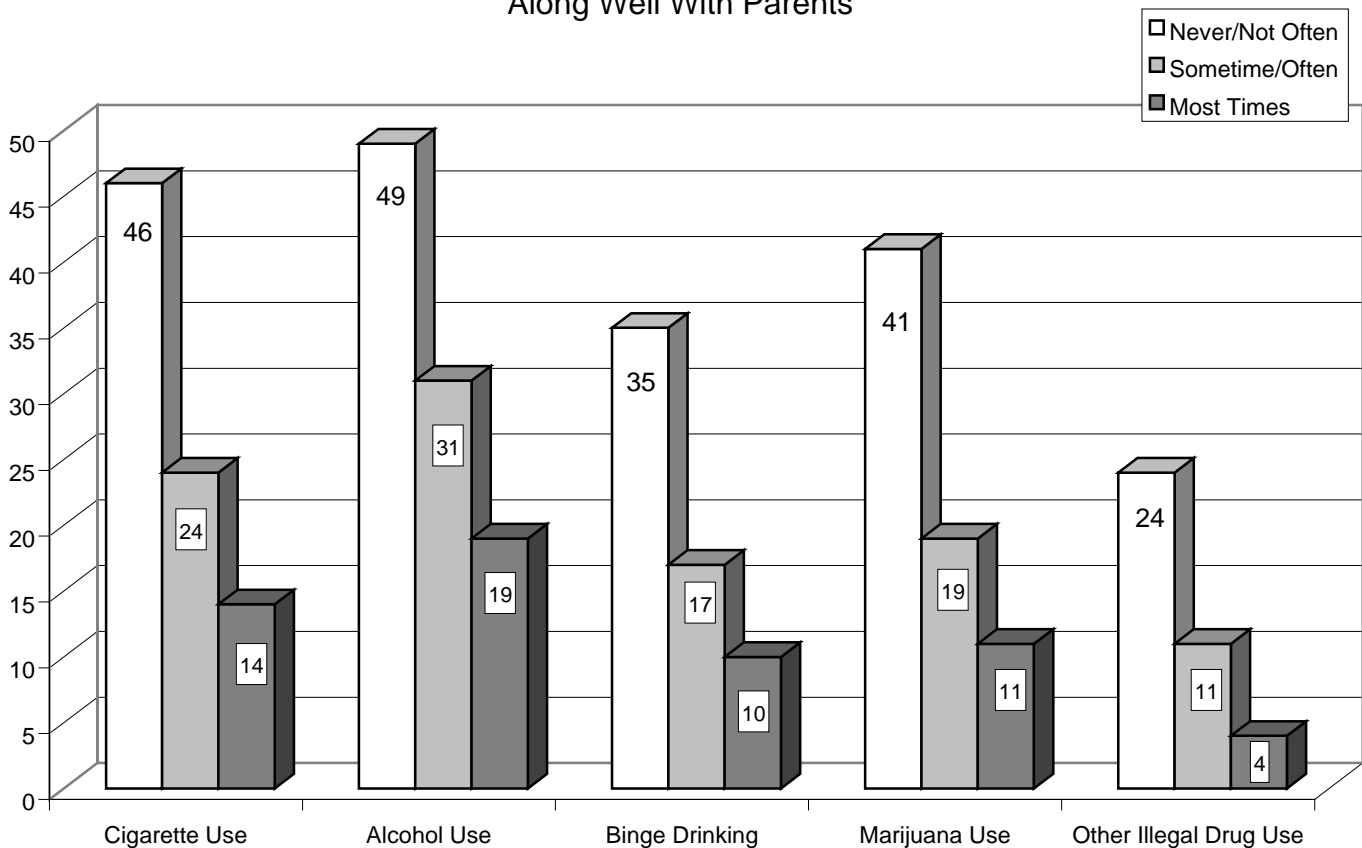
## Getting Along With Parents & Drug Use Among 1999 Delaware 8<sup>th</sup> Graders

The table on the right shows how often 1999 Delaware 8<sup>th</sup> graders report getting along well with parents. The table below shows that the more 8<sup>th</sup> graders report getting along well with parents the less likely they are to use substances. The differences are significant at  $p < .01$  for all substance use measures.

Percent of 1999 Delaware 8<sup>th</sup> Graders By How Often They Get Along Well With Parents



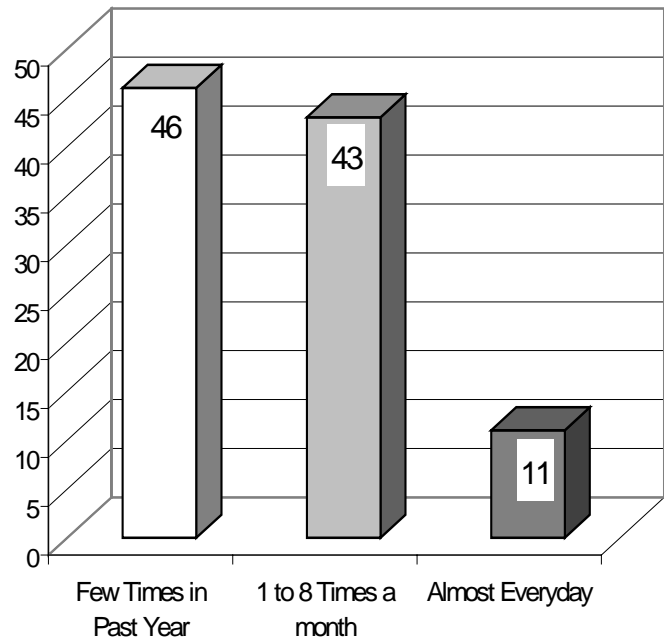
Past Month Substance Abuse Among 1999 Delaware 8<sup>th</sup> Graders By Getting Along Well With Parents



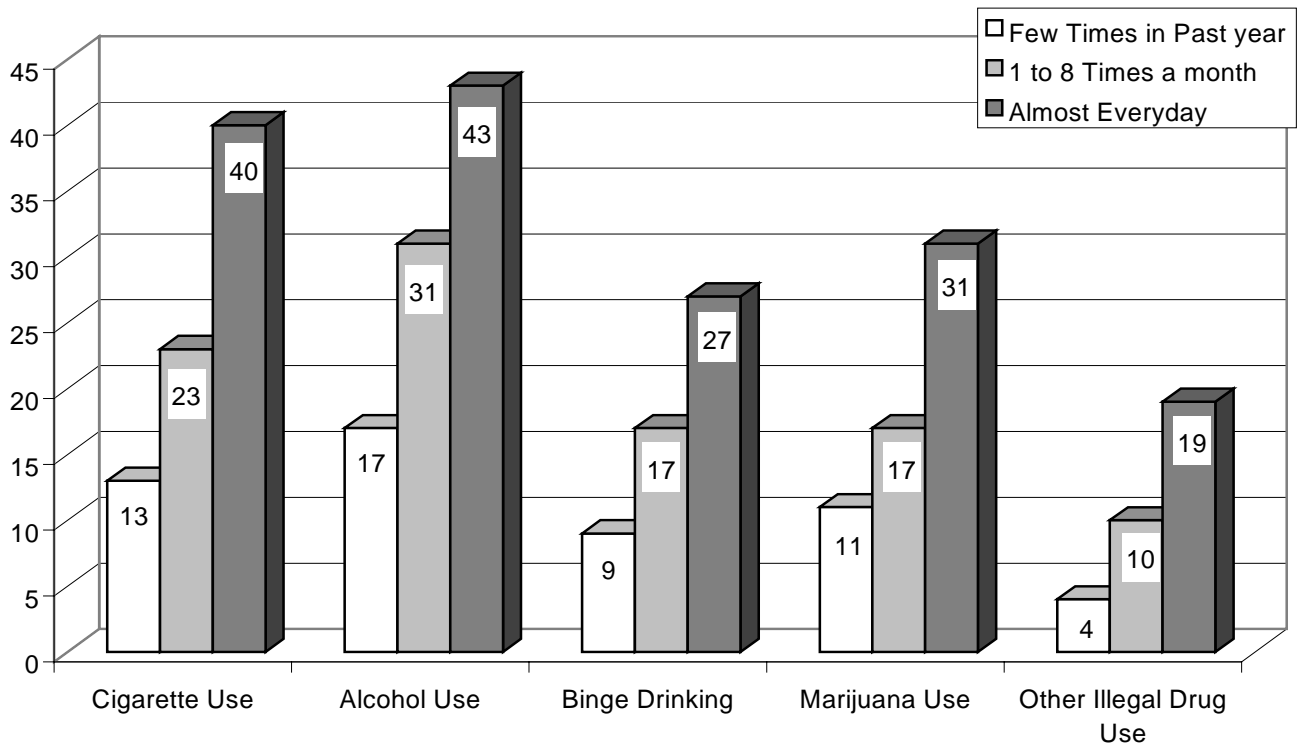
## Fighting/ Arguing With Parents and Drug Use Among 1999 Delaware 8<sup>th</sup> Graders

The table on the right shows how often 1999 Delaware 8<sup>th</sup> graders report arguing or fighting with parents. The table below shows that those who argue with parents the least are less likely to report past month substance use. The differences are statistically significant at  $p < .01$  for all substance use measures.

How Often 1999 Delaware 8th Graders Argue or Fight With Parents (Percentages)



Past Month Substance Abuse Among 1999 Delaware 8th Grader by Arguing or Fighting With Parents (Percentages)

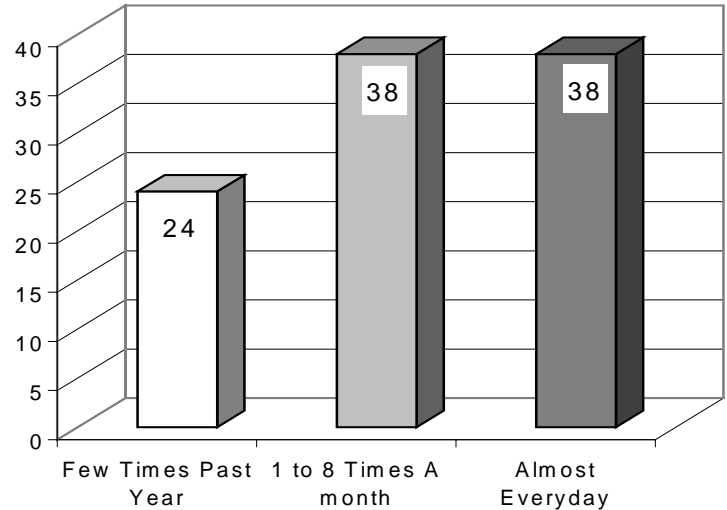


Source: University of Delaware Survey, 1999.

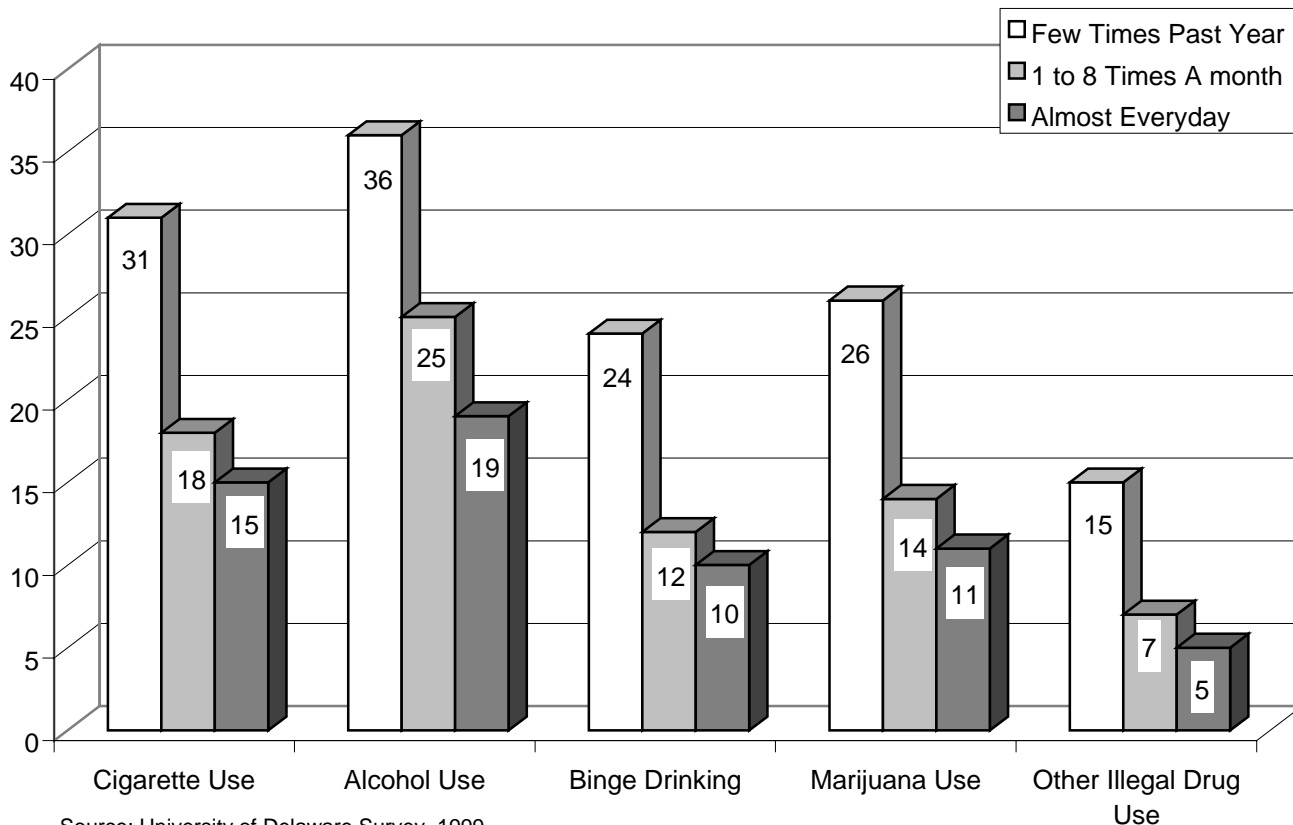
## Past Month Substance Abuse Among 1999 Delaware 8<sup>th</sup> Graders by Talking With Parents About School

The table on the right shows how often Delaware 8<sup>th</sup> graders report talking with their parents about school. The table below shows that those who report talking with parents about school the most use substances the least. The differences are statistically significant for all substance abuse measures at  $p < .01$

How Often Delaware 8th Graders Talk With Parents About School (Percentages)



Past Month Substance Abuse Among 1999 Delaware 8th Graders By Talking With Parent About School (Percentages)

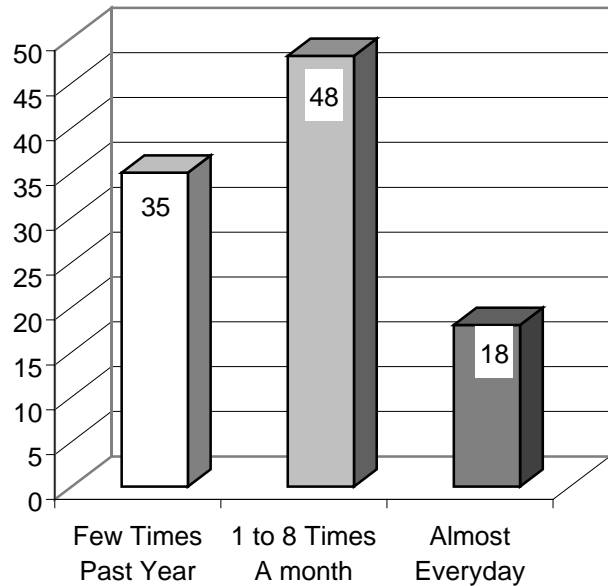




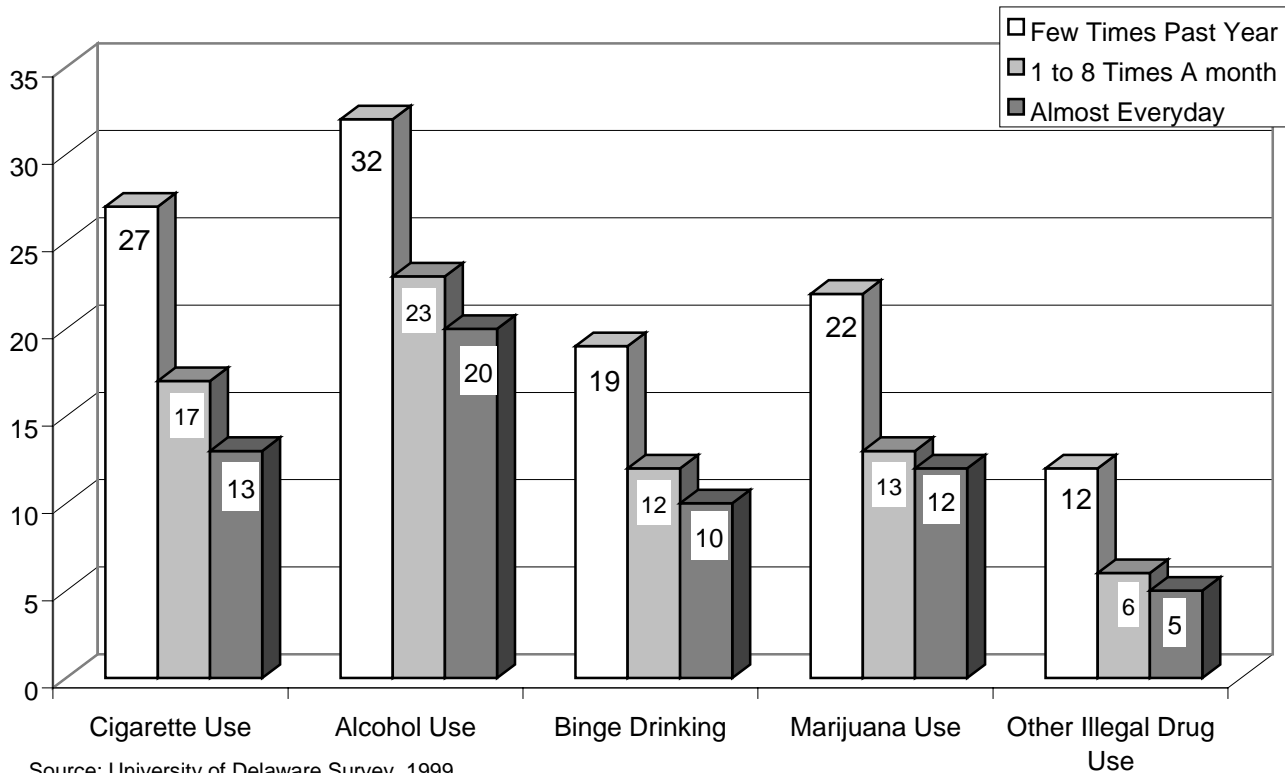
## Past Month Substance Abuse Among 1999 Delaware 8<sup>th</sup> Graders by Talking With Parents About Future Plans

The Table on the right shows how often 1999 Delaware 8<sup>th</sup> graders report talking with their parents about future plans. The table below shows that those who report talking with parents about future plans the most use substances the least. The differences are significant at  $p < .01$  for each substance abuse measure.

How Often 1999 Delaware 8th Graders Talk With Parents About Future Plans (Percentages)



Past Month Substance Abuse Among 1999 Delaware 8th Graders by Talking With Parents About Future Plans (Percentages)

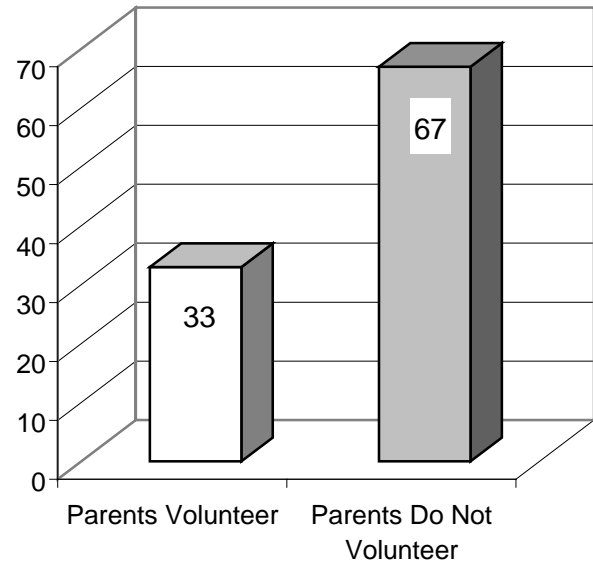


Source: University of Delaware Survey, 1999

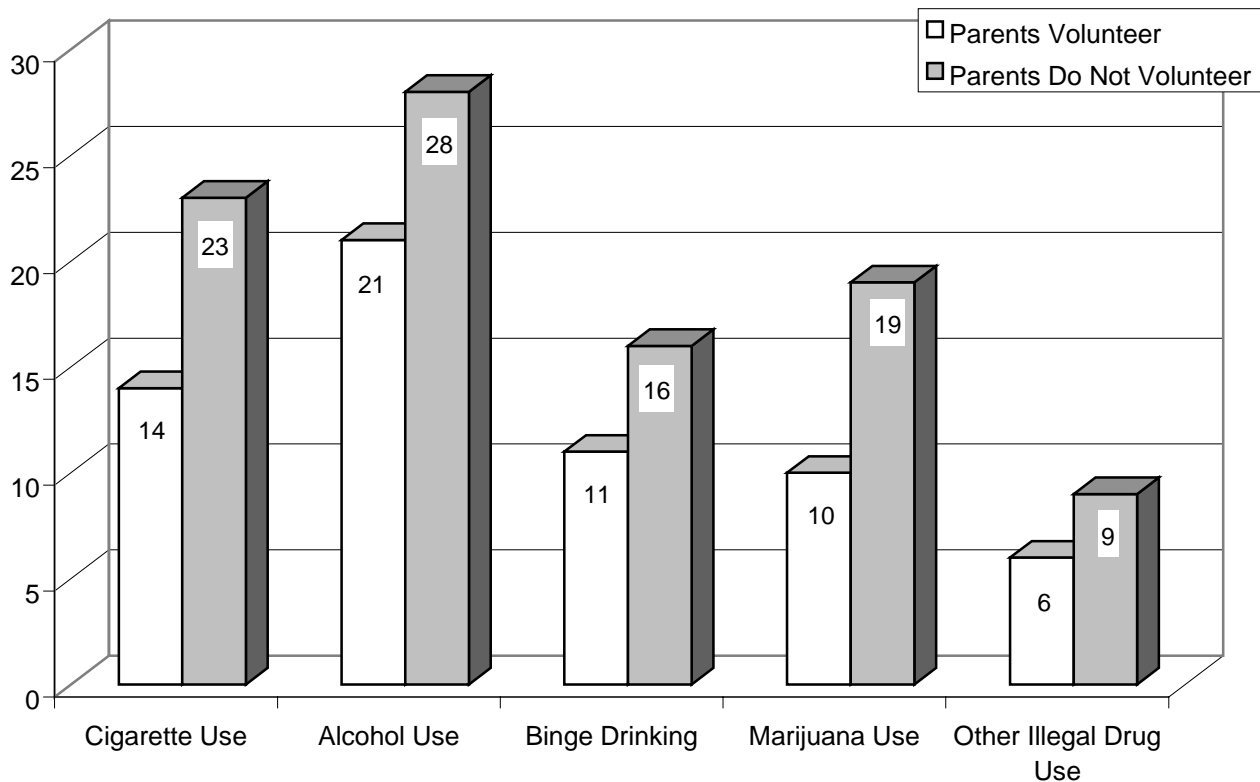
## Past Month Substance Abuse Among 1999 Delaware 8<sup>th</sup> Graders Reporting Parents Volunteer at School

The table on the right shows that 67% of Delaware 8<sup>th</sup> graders report that their parents do not volunteer at school. The table below shows those students whose parents volunteer are less likely to be past month substance users. The differences between those whose parents do and do not volunteer at school are significant for all substance abuse measures at  $p < .01$ .

Percent of Delaware 8<sup>th</sup> Graders Reporting Parents Volunteer At School



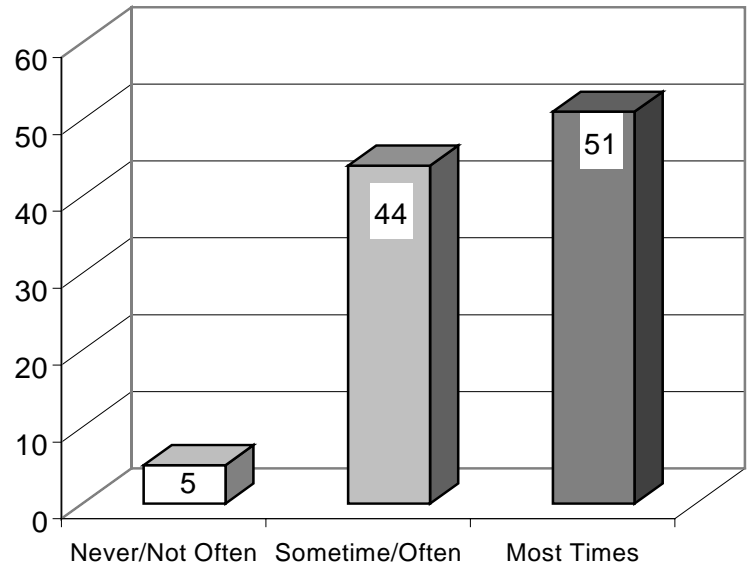
Past Month Substance Abuse Among Delaware 8<sup>th</sup> graders Reporting Parents Volunteer at School (Percentages)



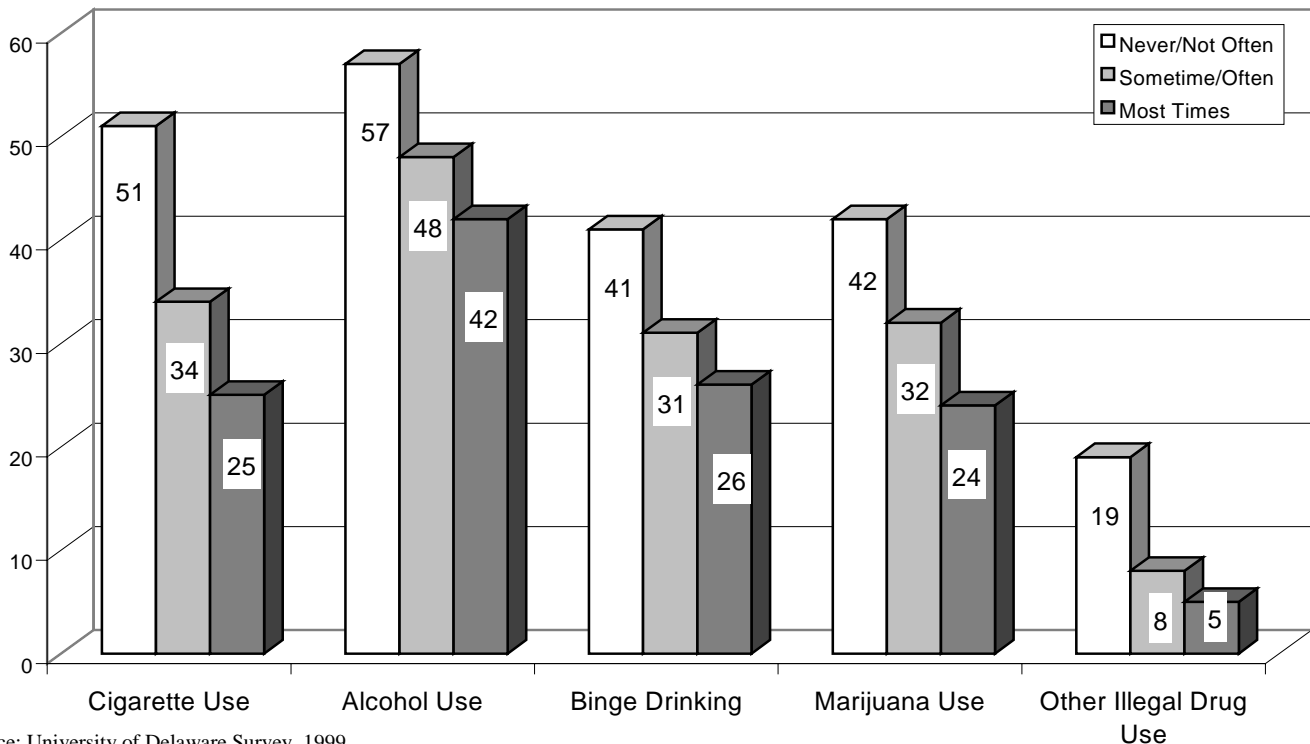
## Getting Along With Parents & Drug Use Among 1999 Delaware 11<sup>th</sup> Graders

The table on the right shows how often 1999 Delaware 11<sup>th</sup> graders report getting along well with parents. The table below shows that the more 11<sup>th</sup> graders report getting along well with parents, the less likely they are to use substances. The differences are significant at  $P < .01$  for all substance use measures.

How Often 1999 Delaware 11<sup>th</sup> Graders Get Along Well With Parents (Percentages)



Past Month Substance Abuse Among 1999 Delaware 11<sup>th</sup> Graders By Getting Along Well With Parents (Percentages)

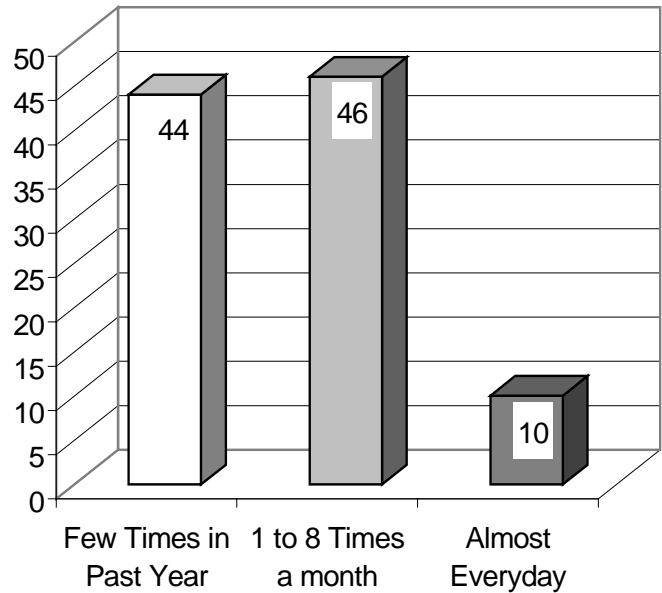


Source: University of Delaware Survey, 1999

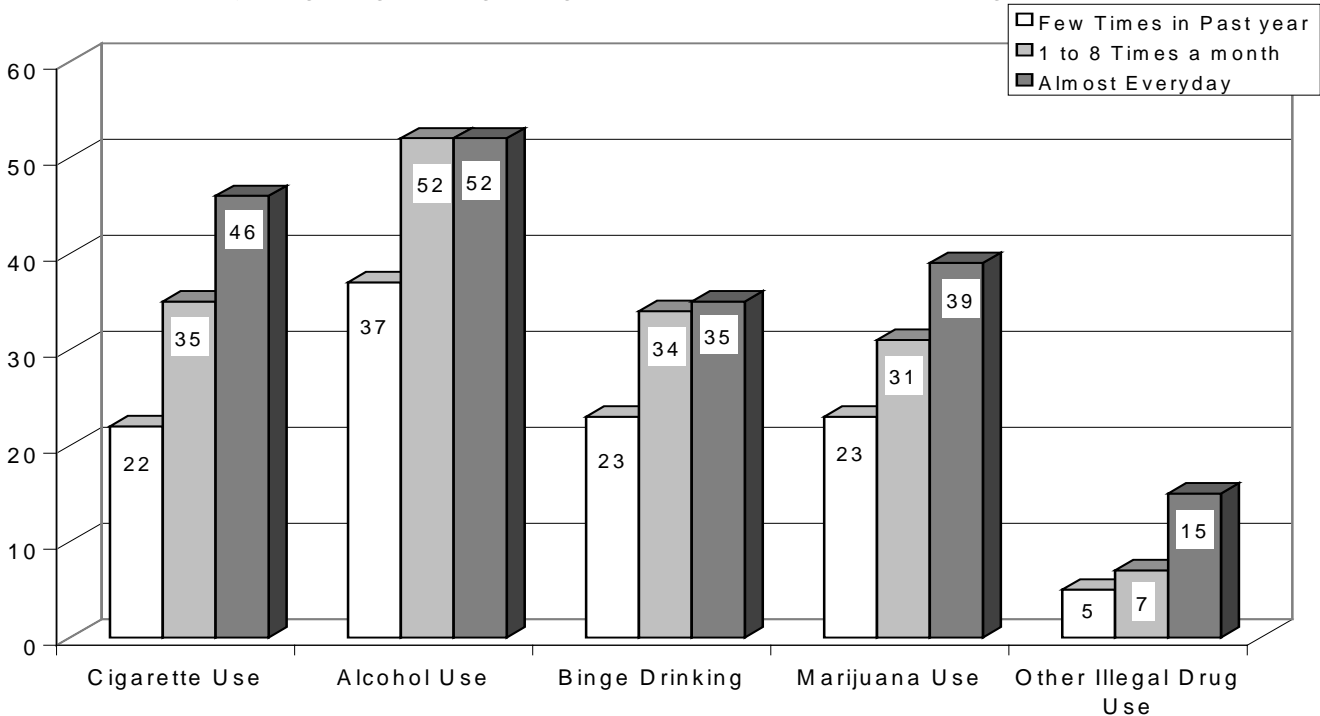
## Fighting/Arguing With Parents and Drug Use Among 1999 Delaware 11<sup>th</sup> Graders

The table on the right shows how often 1999 Delaware 11<sup>th</sup> graders report arguing or fighting with parents. The table below shows that those who argue with parents the least are less likely to report past month substance use. The differences are statistically significant at  $p < .01$  for all substance use measures.

How Often 1999 Delaware 11<sup>th</sup> Graders Argue or Fight With Parents (Percentages)



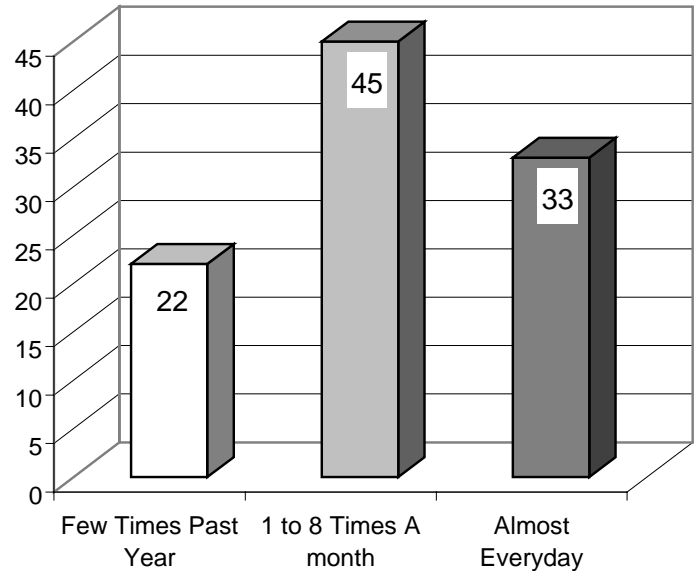
Past Month Substance Abuse Among 1999 Delaware 11<sup>th</sup> Graders by Arguing or Fighting With Parents (Percentages)



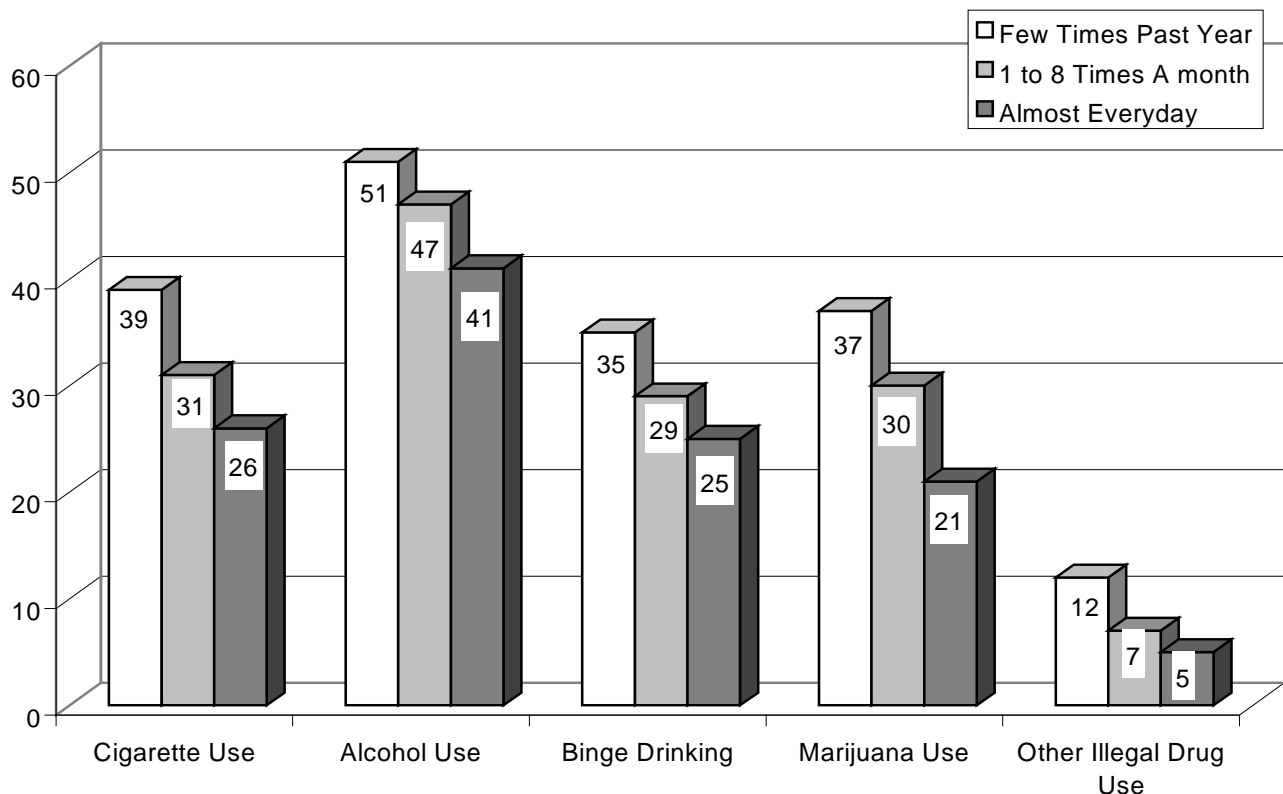
## Past Month Substance Abuse Among 1999 Delaware 11<sup>th</sup> Graders by Talking With Parents About School

The table on the right shows how often Delaware 11<sup>th</sup> graders report talking with their parents about school. The table below shows that those who report talking with parents about school the most use substances the least. The differences are statistically significant for all substance abuse measures at  $p < .01$

How Often 1999 Delaware 11th Graders Talk With Parents About School (Percentages)



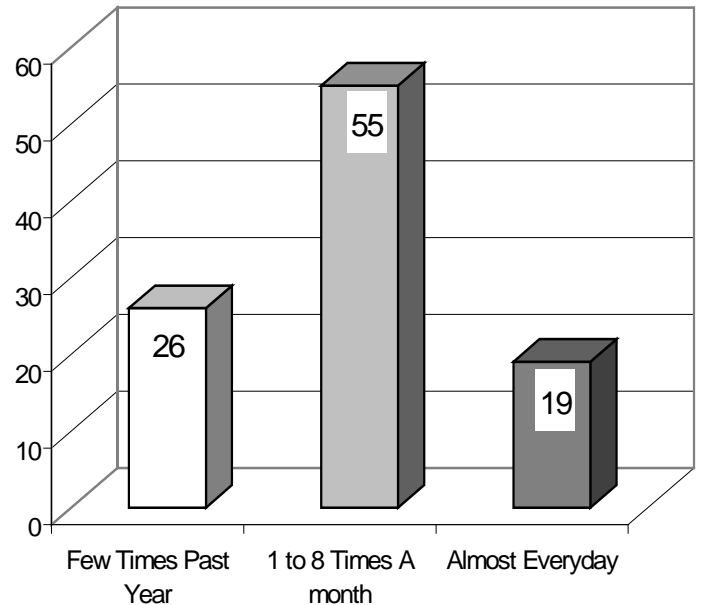
Past Month Substance Abuse Among 1999 Delaware 11th Graders by Talking With Parents About School (Percentages)



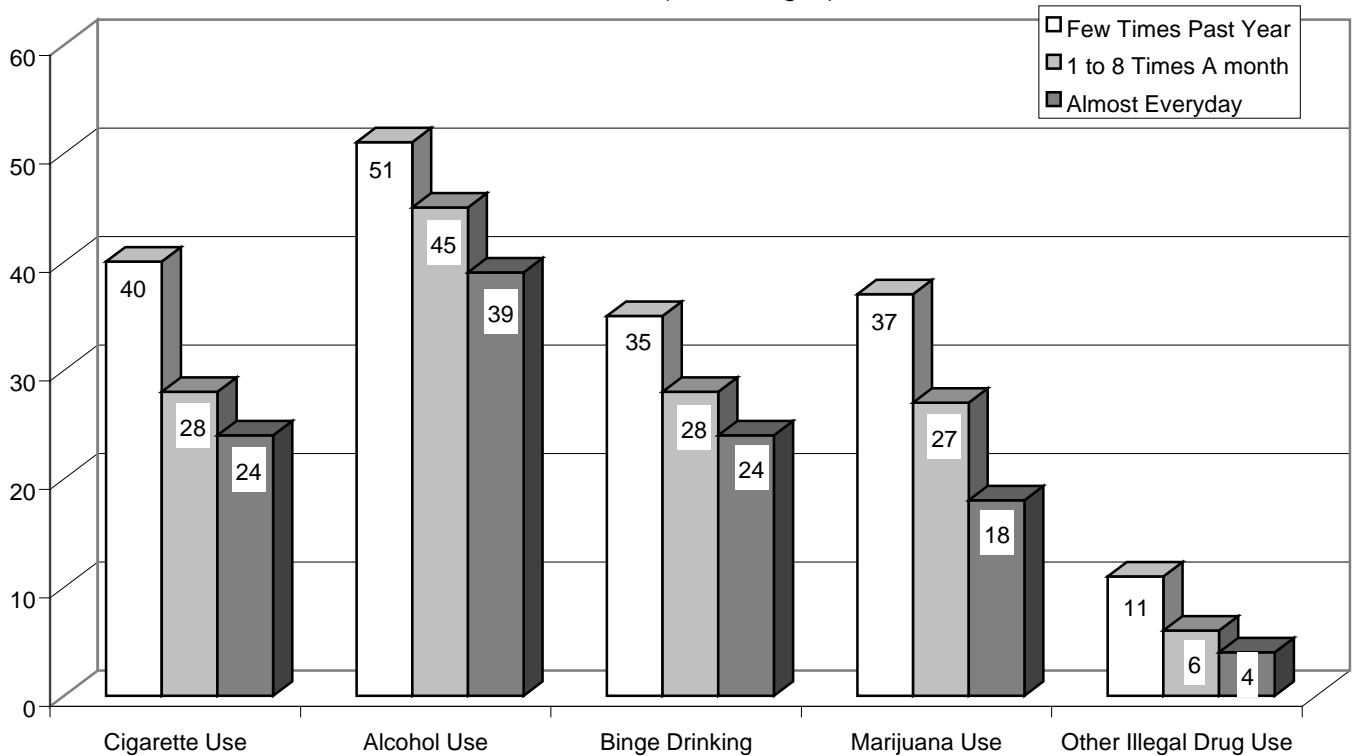
## Past Month Substance Abuse Among 1999 Delaware 11<sup>th</sup> Graders By Talking With Parents About Future Plans

The Table on the right shows how often 1999 Delaware 11<sup>th</sup> graders report talking with their parents about future plans. The table below shows that those who report talking with parents about future plans the most use substances the least. The differences are significant at  $p < .01$  for each substance abuse measure.

How Often 1999 Delaware 11th Graders Talk With Parents About Future Plans (Percentages)



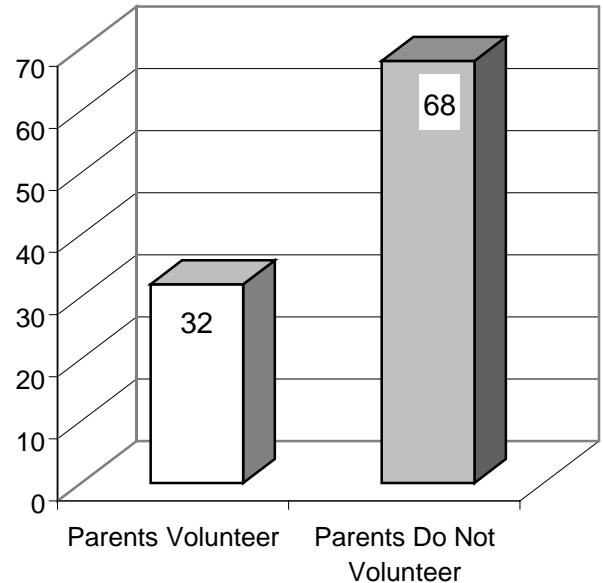
Past Month Substance Abuse Among 1999 Delaware 11th Graders By Talking With Parents About Future Plans (Percentages)



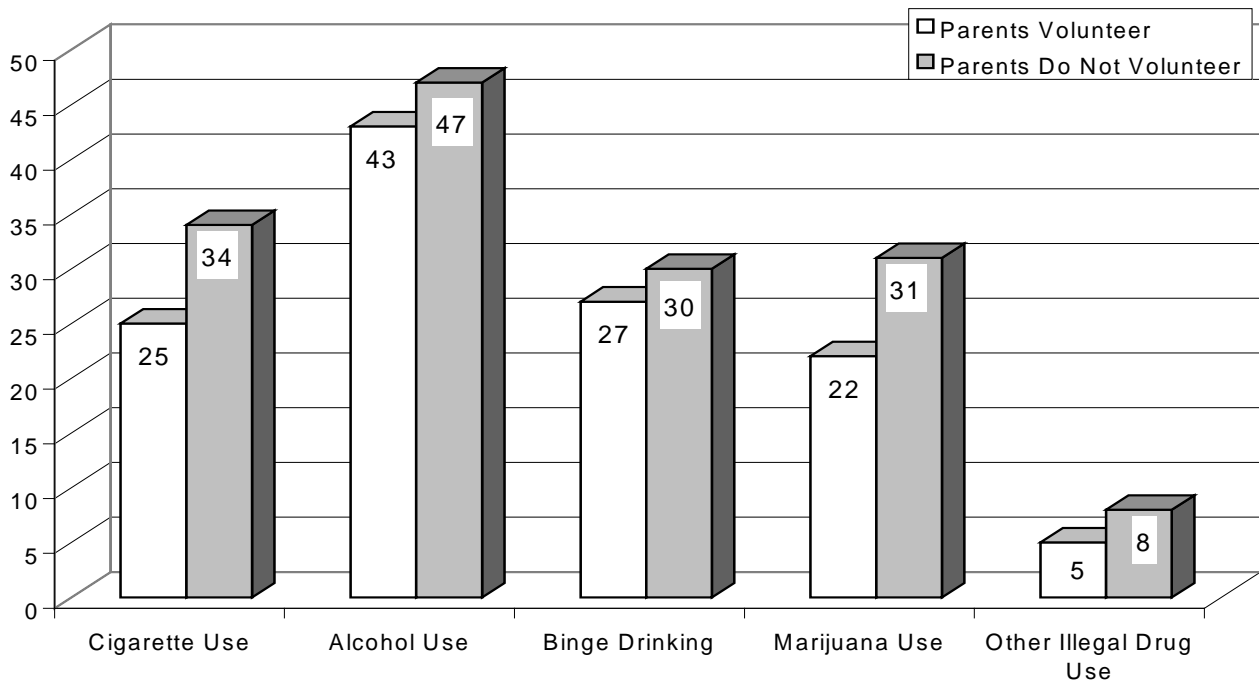
## Past Month Substance Abuse Among 1999 Delaware 11<sup>th</sup> Graders Reporting Parents Volunteer at School

The table on the right shows that 68% of Delaware 11<sup>th</sup> graders report that their parents do not volunteer at school. The table below shows students whose parents do volunteer are less likely to be past month substance users. The difference for the past month alcohol measures are statistically significant at  $p < .05$ , while the remaining differences are significant at  $p < .01$ .

Percent of 1999 Delaware 11th Graders Reporting Parents Volunteer At School



Past Month Substance Abuse Among 1999 Delaware 11th Graders Reporting Parents Volunteer at School (Percentages)



**PAST MONTH SUBSTANCE USE AMONG 1999 DELAWARE EIGHTH GRADERS  
BY HOUSEHOLD MEMBERS WHO SMOKE**  
(percentages)

	<b><u>Who In Your Household Smokes?<sup>a</sup></u></b>			
	<b>Parent</b> n=2903(44%)	<b>Sibling</b> n=1016 (15%)	<b>Other</b> n=792(12%)	<b>No One</b> N=2777(42%)
<b><u>Past Month Cigarette Use</u></b>				
<u>Yes</u>	28	41	29	9
<u>No</u>	72	59	71	91
<b><u>Past Month Alcohol Use</u></b>				
<u>Yes</u>	32	42	33	17
<u>No</u>	68	58	67	83
<b><u>Past Month Marijuana Use</u></b>				
<u>Yes</u>	22	32	24	7
<u>No</u>	78	68	76	93

Note: <sup>a</sup>Categories of household members who smoke are not mutually exclusive.

Source: University of Delaware Survey 1999



**PAST MONTH SUBSTANCE USE AMONG 1999 DELAWARE ELEVENTH GRADERS BY HOUSEHOLD MEMBERS WHO SMOKE**  
(percentages)

	<b><u>Who In Your Household Smokes?<sup>a</sup></u></b>			
	<b>Parent</b> n=585 (15%)	<b>Sibling</b> n=1235 (32%)	<b>Other</b> N916 (24%)	<b>No One</b> N=1821(48%)
<b><u>Past Month Cigarette Use</u></b>				
<u>Yes</u>	46	40	40	22
<u>No</u>	54	60	60	78
<b><u>Past Month Alcohol Use</u></b>				
<u>Yes</u>	53	52	47	40
<u>No</u>	47	48	53	60
<b><u>Past Month Marijuana Use</u></b>				
<u>Yes</u>	40	35	66	21
<u>No</u>	60	65	34	79

Note: <sup>a</sup>Categories of household members who smoke are not mutually exclusive.

Source: University of Delaware Survey 1999

VIII. How Do the Data for Delaware Compare with What is Happening Nationally?

**COMPARISON OF RECENT NATIONAL AND DELAWARE ESTIMATES  
OR CIGARETTES, ALCOHOL, AND MARIJUANA AMONG MIDDLE SCHOOL STUDENTS  
(Percentages)**

	<u>CIGARETTES</u>		<u>ALCOHOL</u>		<u>MARIJUANA</u>	
	<u>Past Year*</u>	<u>Past Month</u>	<u>Past Year*</u>	<u>Past Month</u>	<u>Past Year*</u>	<u>Past Month</u>
<b>1998 8th Grade MTF</b>	-	19	44	23	17	10
<b>1999 8th Grade MTF</b>	-	18	44	24	16	10
<b>1999 8th Grade New Jersey</b>	24	16	51	30	14	10
<b>1998 8th Grade Maryland</b>	23	15	36	27	14	10
<b>1997 9th Grade Pennsylvania</b>	-	31	-	35	-	17
<b>1998 8th Grade Delaware</b>	36	24	46	29	26	19
<b>1999 8th Grade Delaware</b>	32	20	46	26	25	16

Note:           \*(-) Indicates that no estimate is available

Source:       **1998, 1999 Monitoring the Future Study (MTF), University of Michigan; 1999 Youth Risk Behavior Surveillance Survey (YRBS), Centers for Disease Control; 1999 8th Grade, The New Jersey Middle School Survey on Substance Use, Division of Addiction Services, New Jersey Department of Health and Social Services; 1998 Maryland Adolescent Survey, University of Maryland; 1997 Pennsylvania Biennial Youth-Risk Survey, Diagnostics Plus, Inc.; 1998, 1999 Delaware Students Survey, University of Delaware**

**COMPARISON OF RECENT NATIONAL AND DELAWARE ESTIMATES  
OR CIGARETTES, ALCOHOL, AND MARIJUANA AMONG HIGH SCHOOL STUDENTS**  
(Percentages)

	<u>CIGARETTES</u>		<u>ALCOHOL</u>		<u>MARIJUANA</u>	
	<u>Past Year*</u>	<u>Past Month</u>	<u>Past Year*</u>	<u>Past Month</u>	<u>Past Year*</u>	<u>Past Month</u>
1998 12th Grade MTF	*	35	74	52	38	23
1999 12th Grade MTF	*	35	74	51	38	23
1999 9 <sup>th</sup> -12th Grade YRBS-National	*	35	*	50	*	27
1999 9th-12th Grade YRBS-New Jersey	*	34	*	50	*	27
1998 12th Grade Maryland	36	29	66	49	37	23
1997 12th Grade Pennsylvania	*	40	*	51	*	24
1998 11th Grade Delaware	44	33	69	47	42	25
1999 11th Grade Delaware	41	31	69	46	43	28
1999 9th-12th Grade YRBS-Delaware	*	32	*	47	*	29

Note:           \*(-) Indicates that no estimate is available

Source:           1998, 1999 Monitoring the Future Study (MTF), University of Michigan; 1999 Youth Risk Behavior Surveillance Survey (YRBS), Centers for Disease Control; 1999 8th Grade, The New Jersey Middle School Survey on Substance Use, Division of Addiction Services, New Jersey Department of Health and Social Services; 1998 Maryland Adolescent Survey, University of Maryland; 1997 Pennsylvania Biennial Youth-Risk Survey, Diagnostics Plus, Inc.; 1998, 1999 Delaware Students Survey, University of Delaware