

## Delaware School Surveys

**Purpose:** to provide information and documentation of adolescent health risks needed to support policies and programs to improve the lives of Delaware students. Improved lives lead to improved academic performance.

**Since 1995:** Delaware School Survey in grades 5, 8 and 11 began as a collaboration of the Departments of Health and Human Services, Public Instruction, and Services for Children, Youth and Families (to reduce burden on the schools by combining surveys) to obtain information needed for State program planning and evaluation, and for Federal reporting requirements

**Since 1999:** Youth Risk Behavior Survey, a CDC survey, coordinated with other surveys on odd-numbered years used to compare Delaware rates of teen behaviors to national rates, and add information on mental health and sexual risk behaviors

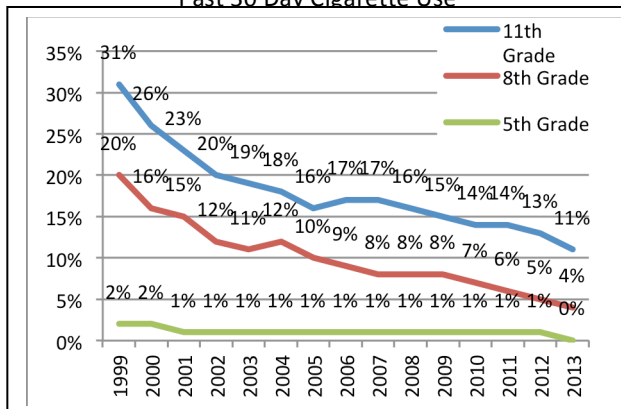
**Since 2000:** Youth Tobacco Survey, coordinated with other surveys on even-numbered years, used as CDC's evaluation of the impact of the Tobacco Settlement and to provide information for planning and monitoring prevention programming

**Since 2002:** School Health Profiles survey of Principals and Lead Health Teachers to provide information on school policy and practice concerning health education and need for professional development in these areas

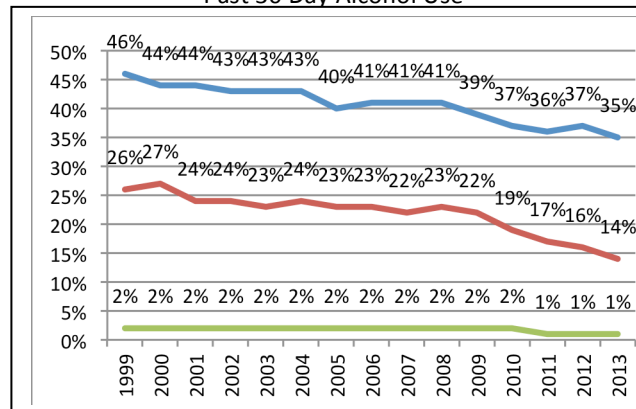
### School Survey Data has been used for:

- Division of Substance Abuse and Mental Health Services (and contractors) Strategic Prevention Framework-State Incentive Grant and Substance Abuse Prevention and Treatment Block Grants
- Division of Prevention and Behavioral Health Services two Garrett Lee Smith Youth Suicide Prevention Grants
- Department of Public Health Personal Responsibility Education Program Grant
- Department of Education HIV/AIDS Prevention Grant
- Delaware Coalition Against Domestic Violence Domestic Violence Prevention Enhancement and Leadership Through Alliances Grants
- Nemours Health and Prevention Services Community Transformation Grant
- Drug Free Communities Grants for New Castle County, Dover area, Sussex County
- School-based Health Center (Wellness Center) for Caesar Rodney and Al DuPont High Schools

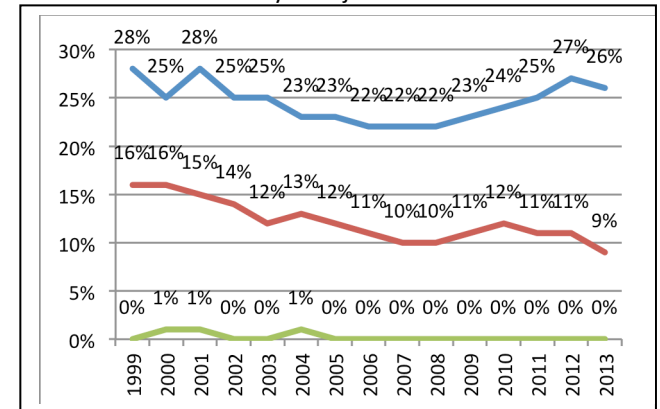
Past 30 Day Cigarette Use



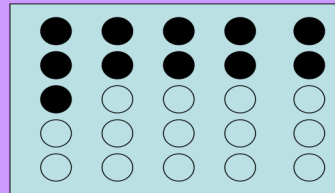
Past 30 Day Alcohol Use



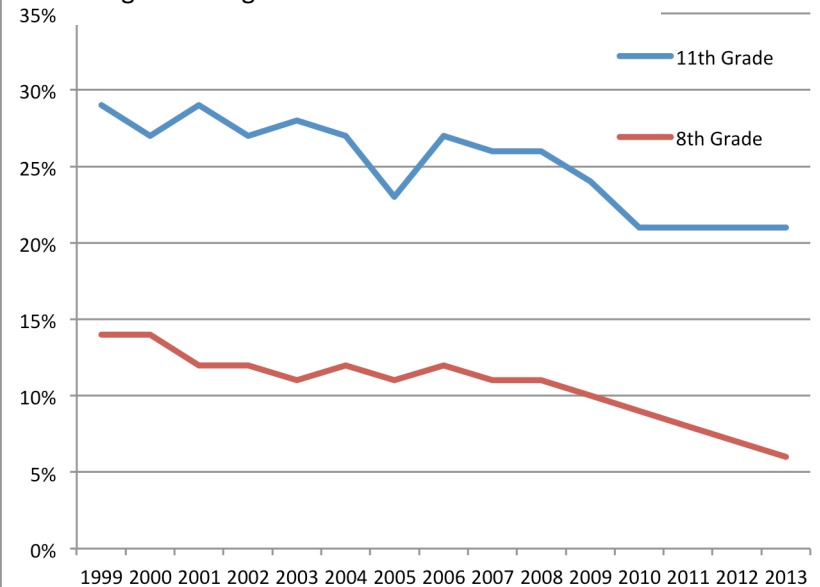
Past 30 Day Marijuana Use



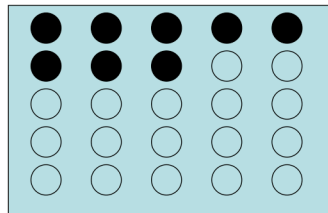
43% of Delaware 11<sup>th</sup> grade students have used alcohol, marijuana, or other illegal drugs in the past month—almost half of the average class. This is why teens see substance use as “normal.”



Binge Drinking in the Past 2 Weeks--Delaware



**8 students in the average high school class of 25 are obese (above 95<sup>th</sup> percentile) or overweight (above 85<sup>th</sup> percentile of national norms).**



Binge Drinking in the Past 2 Weeks--Kent Co.

