

Substance Use & Opioid Use Disorder: Who is Accessing Publicly Funded Treatment in Delaware?

A Preliminary Look



DELAWARE HEALTH AND SOCIAL SERVICES

Division of Substance Abuse and Mental Health



Center for
Drug & Health
Studies

DIVISION OF SUBSTANCE ABUSE & MENTAL HEALTH:

DIRECTOR ELIZABETH ROMERO, KRIS FRASER, RACHELLE CHIANG,
CANDACE WILKINSON, MICHAEL WILLIAMS, AND JOHN GUDZELAK

CENTER FOR DRUG AND HEALTH STUDIES, UD:

DAVID BORTON, SOLANGE EALY, EILEEN SPARLING, JESSICA ARNOLD,
DAN O'CONNELL, AND LAURA RAPP

Publicly Funded Treatment in Delaware

- The Division of Substance Abuse & Mental Health (**DSAMH**), a part of the Department of Health and Social Services (**DHSS**), serves Delawareans in need of **publicly funded** behavioral health and substance use related services
- As part of a client's treatment, a client is asked questions about their demographics, substance use & mental health on the DSAMH Consumer Reporting Forms (**CRFs**)
- The University of Delaware Center for Drug and Health Studies (**CDHS**), in collaboration with DSAMH's Statistics and Research Unit (**SRU**), are analyzing the CRF data with a focus on opioid use and disparities in treatment

DPH's Drug Overdose Mortality Surveillance Report

- **144% increase** in drug overdose deaths over a 6 year period
 - From **142 deaths in 2012**, to **346 deaths in 2017**

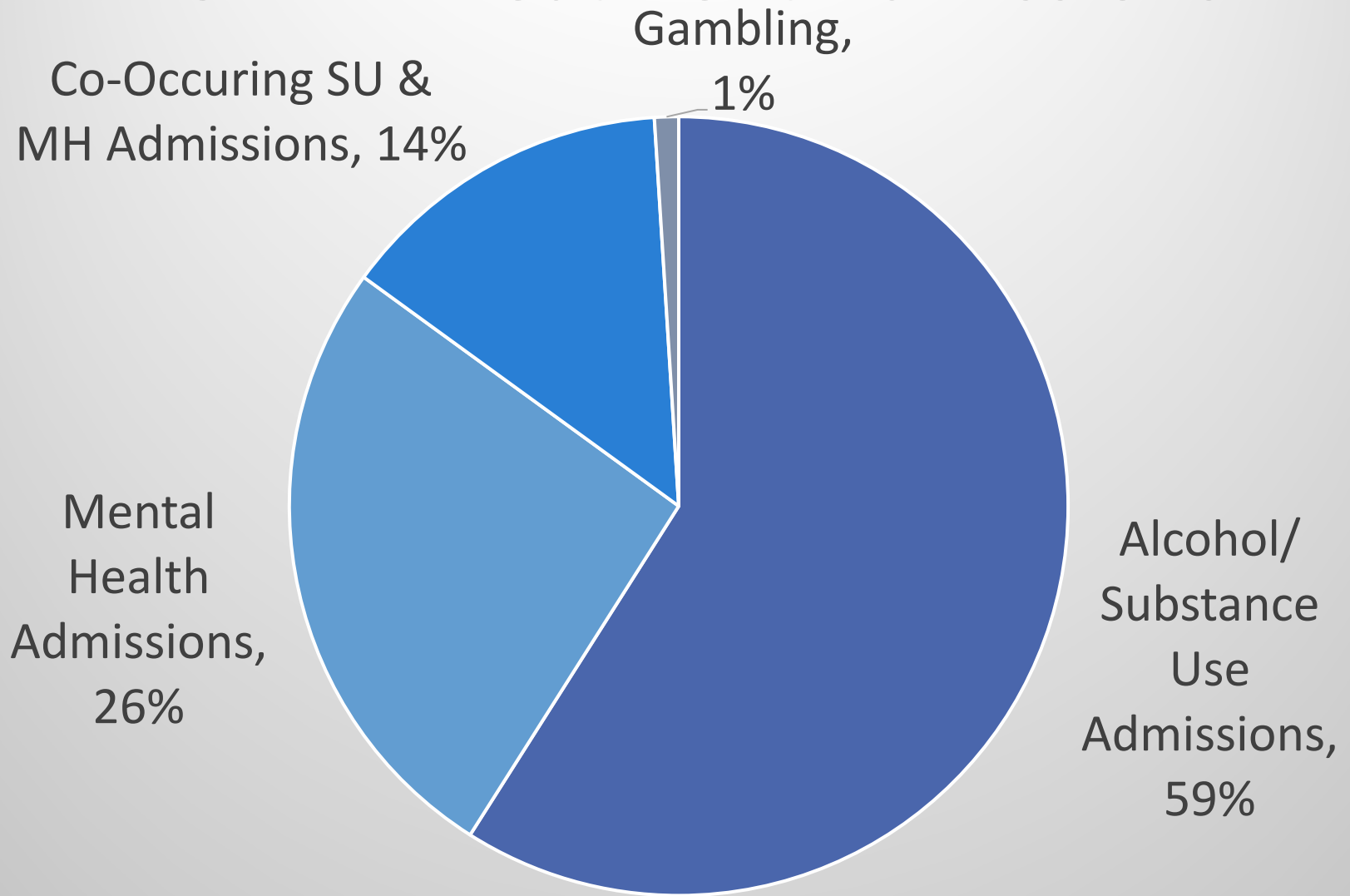
DPH's Drug Overdose Mortality Surveillance Report

- In 2017, the rate of drug overdose deaths among **males was twice as high** as the rate among females
- The highest age-specific rates of drug overdose deaths occurred among **25- to 34-year-olds**; these rates increased **86%** between 2008 and 2017

CRF: Important Notes

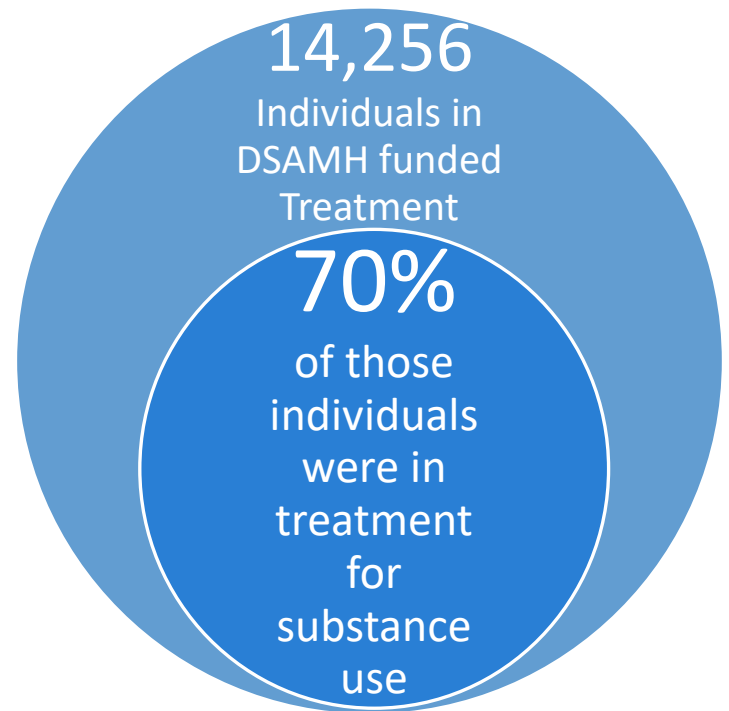
- **Early Analysis:** Development of data cleaning procedures is ongoing
- **2018 Data:** This analysis represents people admitted to DSAMH services in 2018
- Services provided are classified as mental health, substance use, co-occurring (mental health & substance use), or gambling

DSAMH Treatment Admissions

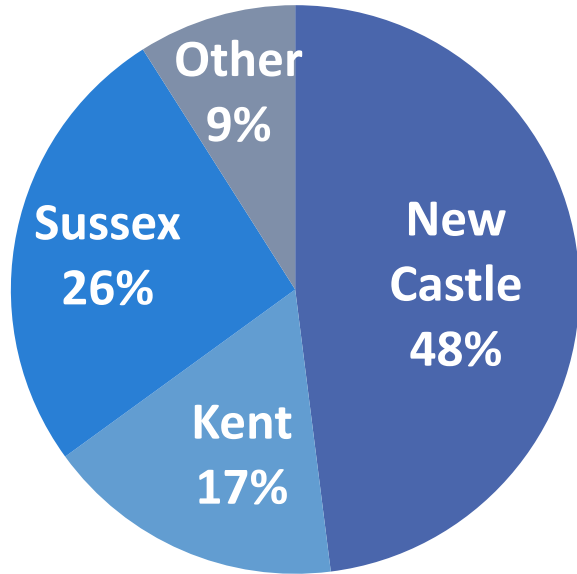


CRF: Important Notes

- **Admissions vs. Individuals:** An individual can be admitted more than one time in the calendar year (2018). Number of admissions for treatment services range from 1-31 admissions per individual client.



Individuals in DSAMH Treatment



Women	38%
Men	62%
Black	30%
White	64%
Ages 25-34	34%
Homeless (at some point in 2018)	20%

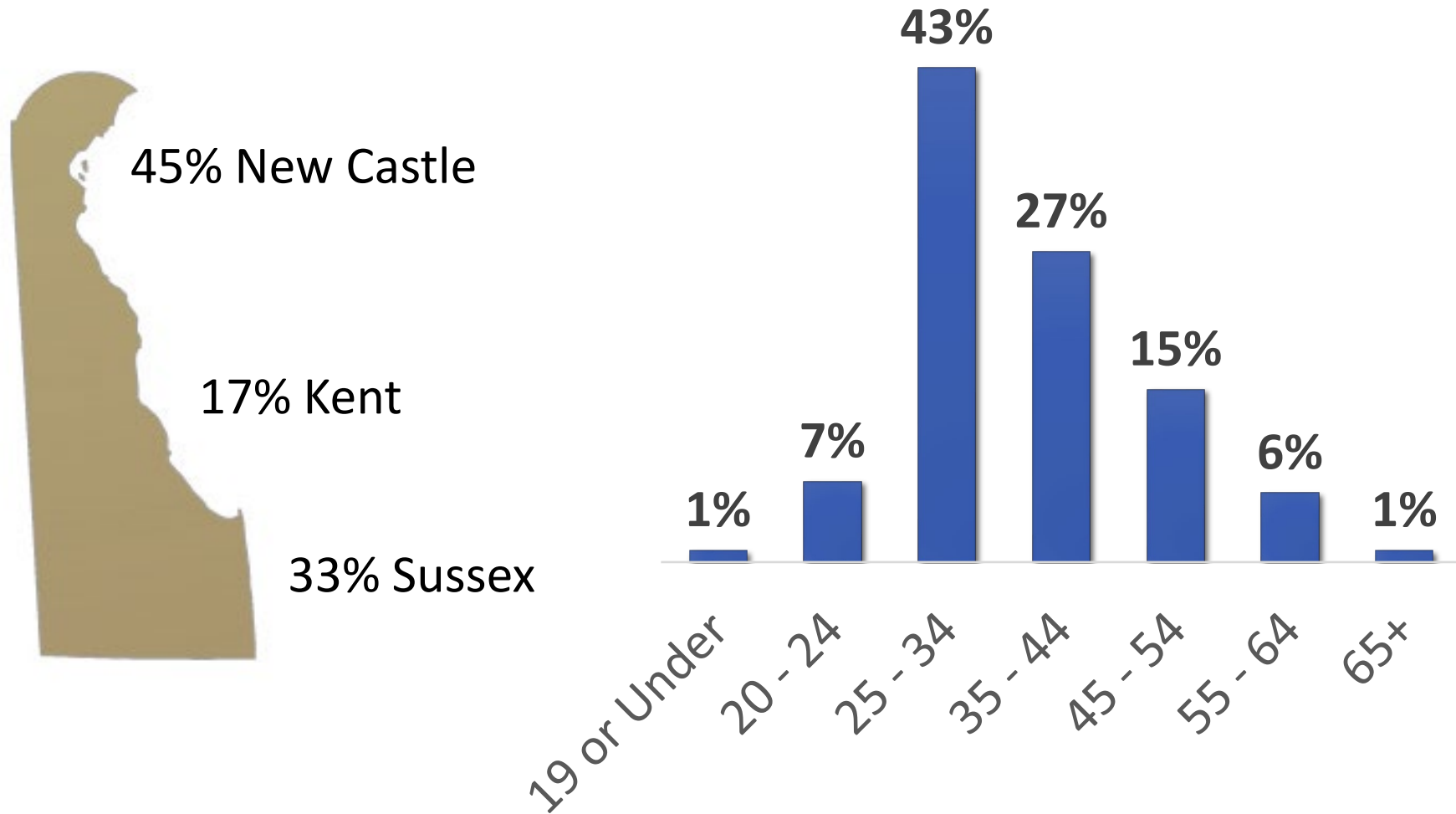
2018 Reported Substance Use

Heroin	38%
Alcohol	30%
Marijuana	29%
Crack or Cocaine	26%
Other Opioid (including Methadone)	12%
Other Drug Not Listed	10%

2018 Polysubstance Use

Heroin and One Other	27%
Two or More Substances	52%

Individuals in Substance Use Treatment Who Reported Opioid Use in 2018



Individuals in Substance Use Treatment Who Reported Opioid Use in 2018

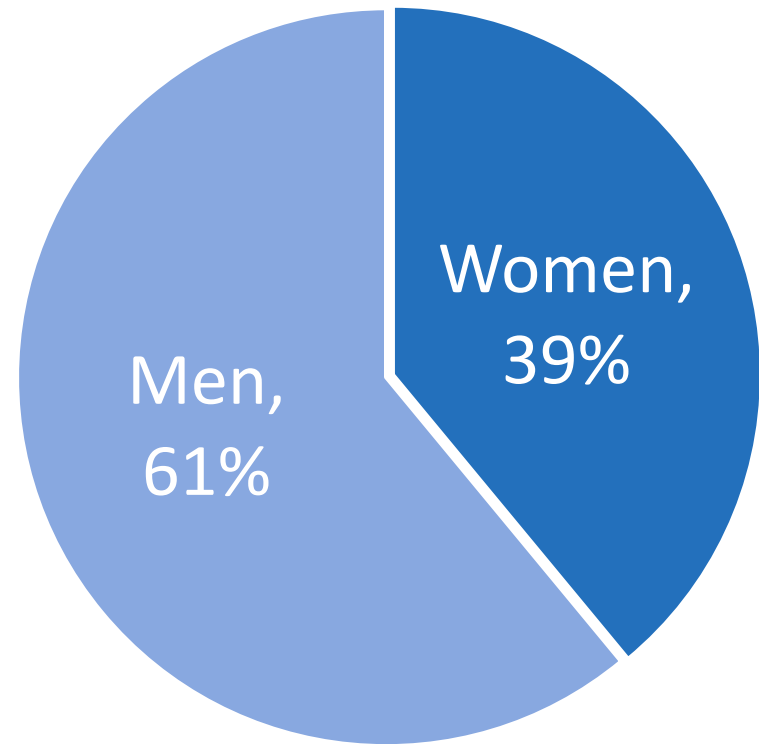
Race

Black	16%
White	78%
Multiple Races	4%
Other	1%

Hispanic or Latino

Yes	5%
No	95%

Gender



Individuals in Substance Use Treatment Who Reported Opioid Use in 2018



Less than High School	29%
High School Completed	53%
Some College	15%
College Degree	3%
Advanced Coursework or Degree	<1%

Other Descriptors	
Homeless (at some point in 2018)	24%
Veteran or Active Duty	4%
Arrested (at some point in 2018)	13%
Received DSAMH Treatment as a Result of Legal System Involvement	16%
Reported Use of Both Opioids and Non-Opioids at the Same Admission	66%
Received More than One DSAMH Service in 2018	55%

Individuals in DSAMH Substance Use Treatment: Reported Heroin Use

52%
of Individuals
Reported
Using Heroin
in 2018

58% of women reported heroin use in 2018, compared to 45% of men

60% of clients who identify as White reported heroin use in 2018, compared to 26% of clients who identify as Black and 40% of clients who identify with multiple races.

59% of substance use clients ages 25-34 reported heroin use in 2018.

34% of veterans and active duty members in DSAMH care reported heroin use in 2018, compared to 51% of non-veterans and non-active duty members

DSAMH Clients, In Context

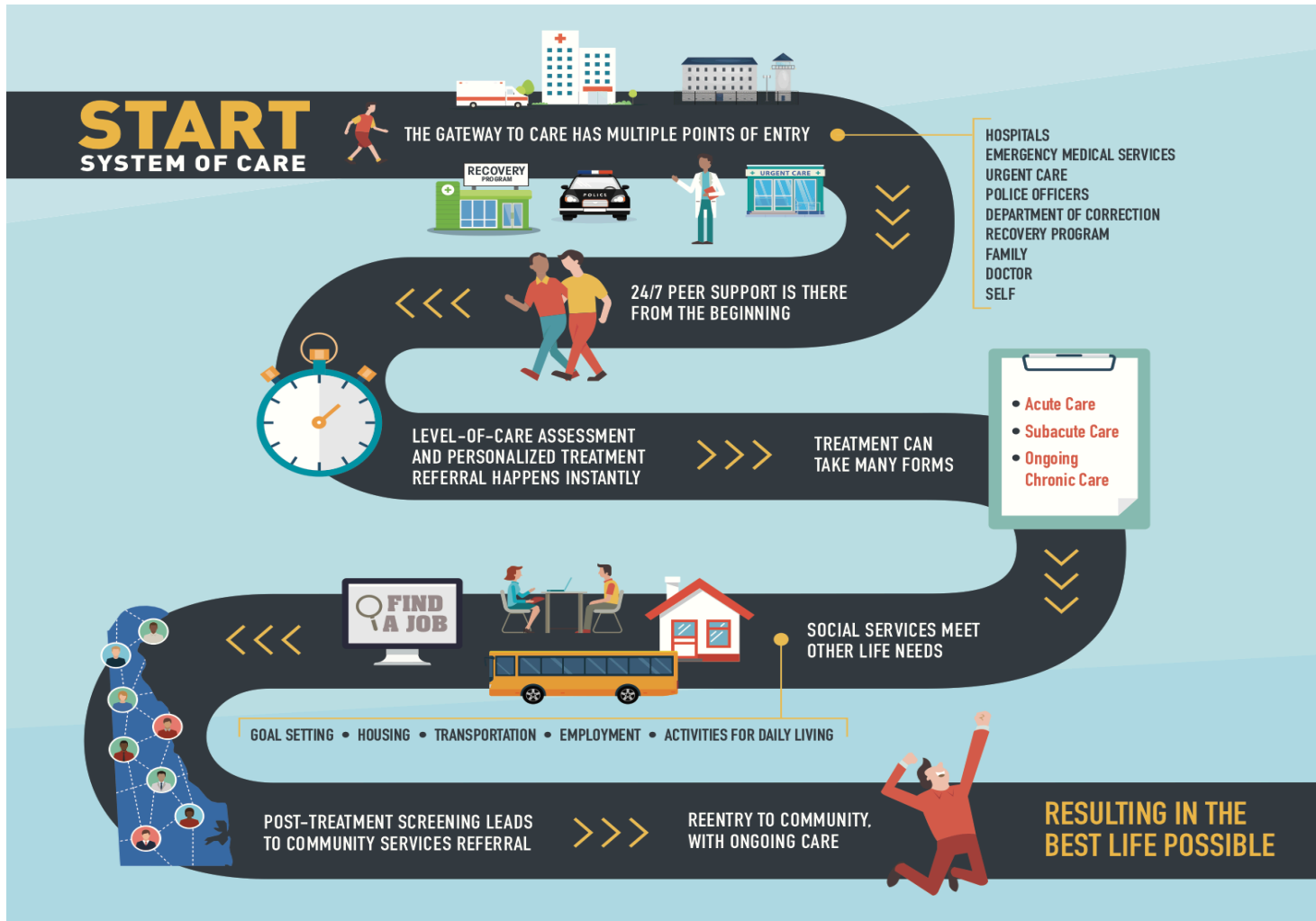
Opioid Use (OU):
 Clients in Substance
 Use or Co-Occurring
 Treatment, reported
 opioid use in 2018

All: All DSAMH Clients

ACS: DE State
 Population, 2018
 American Community
 Survey (ACS)

	OU	All	ACS
New Castle County	45%	48%	59%
Kent County	17%	17%	18%
Sussex County	33%	26%	23%
Women	39%	38%	52%
Men	60%	62%	48%
Black	16%	30%	22%
White	78%	64%	69%
Ages 25-34	43%	34%	13%
Homeless (at some point in 2018)	24%	20%	0.3%*

Initiatives to Increase Treatment Utilization



START: An evidence-based model that transforms Delaware's substance use disorder system of care into one that is personalized and easier to navigate.

Initiatives to Increase Treatment Utilization



DTRN

A statewide, comprehensive electronic referral network for behavioral health and substance use disorder treatment



Help is Here

A comprehensive site (currently being updated and revised) for resources about mental health, addiction, treatment, recovery, and health care providers in Delaware



Bridge Clinics

Provide screening and referrals to MH and SUD treatment, as well as additional services such as access to on-site clinicians. Services are available regardless of ability to pay

Next Steps: Qualitative Interviews and Continued Data Analysis

- **Qualitative Interviews:** DSAMH clients and providers are being interviewed to help identify common facilitators and barriers to accessing, maintaining, and completing services.
 - Interviews began in late summer 2019.
- **Continued Data Analysis:** DSAMH and UD will continue partnering to analyze treatment data to help inform data driven decisions. The goal is to identify disparities that will drive decision-making and resource allocation.

Thank You!

For more information please contact:

- Kris Fraser, DSAMH SRU,
 - kris.fraser@delaware.gov
- Dr. Laura Rapp, UD CDHS,
 - lrapp@udel.edu
- Dr. Dan O'Connell , UD CDHS,
 - oconnell@udel.edu