

Welcome!

We will get started in just a few moments.

Please feel free to introduce yourself to others.



State Epidemiological Outcomes Workgroup Winter Session

University of Delaware
Center for Drug and Health Studies
February 20, 2025



Changing Data Landscape

State Epidemiological Outcomes Workgroup

Funding for this project has been provided by the Delaware Department for Health and Social Services, Division of Substance Abuse and Mental Health through the Substance Abuse and Mental Health Services Administration (SAMHSA).



Agenda

Welcome & Introductions

SEOW Goals

New Data Products

2024 Epi Report Highlights

Discussion

Network Share Out

The goals of the State Epidemiological Outcomes Workgroup (SEOW) are...

- To build monitoring and surveillance systems to **identify, analyze, and profile data** from state and local sources;
- To **identify, share, and analyze data**;
- To **create data-guided products** that inform prevention, treatment and recovery planning and policies;
- To **train agencies and communities** in understanding, using, and presenting data effectively.

Since we last saw you in September...

Reminder:

SEOW Newsletter

Coming soon!

Opioid infographic Series

Today's Topic and Data Products:

2024 Delaware Epi Report Modules and Infographics

2024 Epi Report Companion Guide

2024 Epi Report Executive Summary

2024 Epi Report Slidedeck

SEOW Roundup:

An update of behavioral health data, news, and resources compiled by the Delaware State Epidemiological Outcomes Workgroup



Our Goals

ce systems to identify, analyze, and
ources;
a;
at inform prevention planning and
s in understanding, using, and

2024 Epidemiological Profile:

Executive Summary

What is the Delaware SEOW?

The State Epidemiological Outcomes Workgroup (SEOW) is a network of representatives from approximately 50 state and nonprofit agencies, community organizations, advocacy groups, and other entities. The SEOW's mission is to bring data on behavioral health and associated issues to the forefront of prevention, treatment, and recovery efforts by pursuing the following goals:

- To build monitoring and surveillance systems to identify, analyze, and profile data from state and local sources;
- To provide current benchmarks, trends, and patterns of substance use consumption and consequences;
- To create data-guided products that inform prevention, treatment, and recovery services planning and policies;
- To train agencies and communities in understanding, using, and presenting data effectively.

What is the annual Delaware Epidemiological Profile?

The Center for Drug and Health Studies (CDHS) at the University of Delaware facilitates the SEOW on behalf of the Division of Substance Abuse and Mental Health (DSAMH). Each year, CDHS produces an annual profile of behavioral health indicators for the state. The report includes modules that highlight data regarding mental health and wellbeing, patterns of substance use and its consequences, and risk and protective factors for people in Delaware. It also highlights crosscutting issues that warrant attention as well as populations that may experience disproportionate risk. The data presented in this report are compiled from over 30 state and national data sources ([see the Companion Guide to the 2024 Delaware Epidemiological Profile for more detail](#)). CDHS conducts several youth surveys on behalf of the state, including the Delaware School Surveys (DSS) and the Delaware Youth Risk Behavior Surveys (YRBS). These data are important for monitoring behavioral health among youth and are included throughout the profile.

This is a product of the Delaware State Epidemiological Outcomes Workgroup (SEOW) project. Funding for the State Epidemiological Outcomes Workgroup has been provided by the Delaware Department for Health and Social Services, Division of Substance Abuse and Mental Health through the Substance Abuse and Mental Health Services Administration (SAMHSA).



Key Highlights



According to the 2021-2022 NSDUH, approximately half of all Delawareans age 12 and older (51.42%) report alcohol use within the past month.



The 2021-2022 NSDUH estimates indicate that more than one in three (36.14%) Delaware adults aged 18 to 25 had a mental illness in the past year.



According to the 2021-2022 NSDUH, findings estimate that almost one in six (14.13%) Delawareans aged 12 and over used marijuana in the past month.

Information highlighted throughout this infographic are key findings from the corresponding module of the 2024 Epidemiological Profile. For further context please refer to the relevant modules [here](#).

[illegible]

Center for Drug and Health Studies



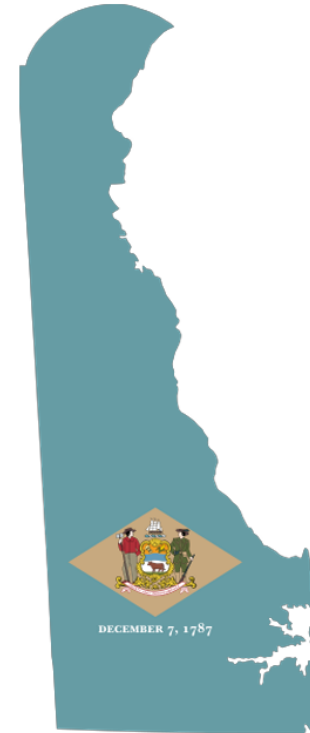
Word Cloud Activity

What comes to mind when you think of the Epi Report?

<https://livecloud.online/en/wordcloud>

The “Epi”

- The Delaware Epidemiological Profile is an annual compilation of data highlighting substance use, mental health, risk and protective factors, and special topics.
- The Epi is a resource for:
 - Needs assessment
 - Grant applications
 - Evaluation planning
 - Presentations, public awareness, and media outreach



**COMPANION GUIDE
to**

**The 2024 Delaware
Epidemiological
Profile**

**Substance Use, Mental
Health, and Related
Issues**



Modules Included in the 2024 Epi Profile

E-Cigarettes (Vaping) and Tobacco
Alcohol
Marijuana
Opioids
Other Illegal Drugs
Maternal Behavioral Health
Gambling
Mental Health and Wellness
Persons with Disabilities
Adverse Childhood Experiences (ACEs) and
Other Trauma
Gender and Sexuality
Protective Factors

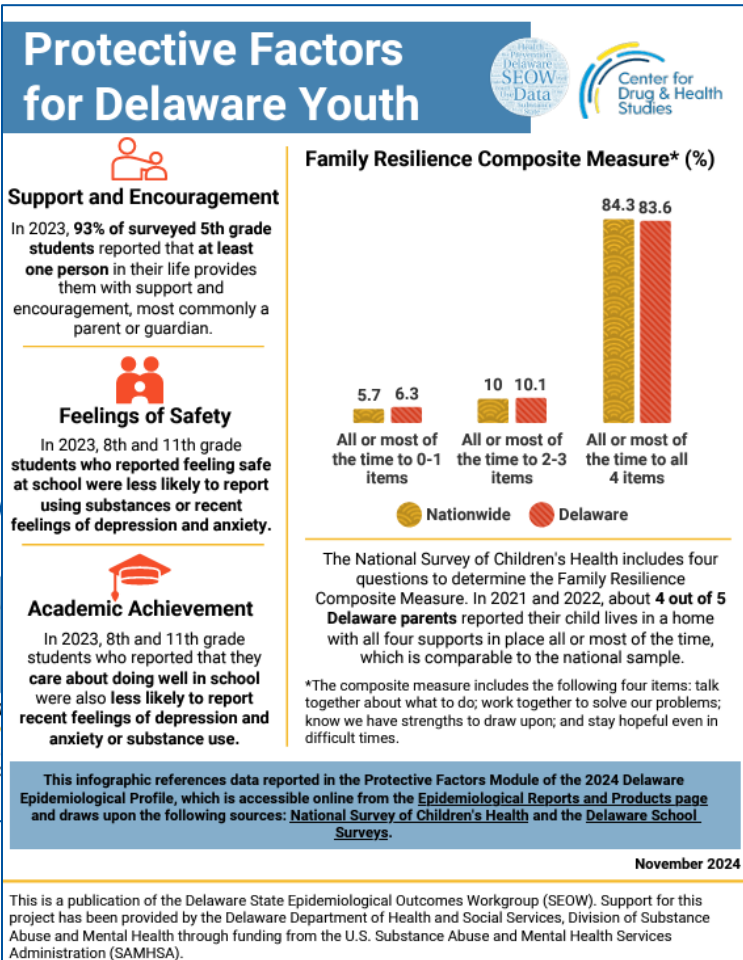
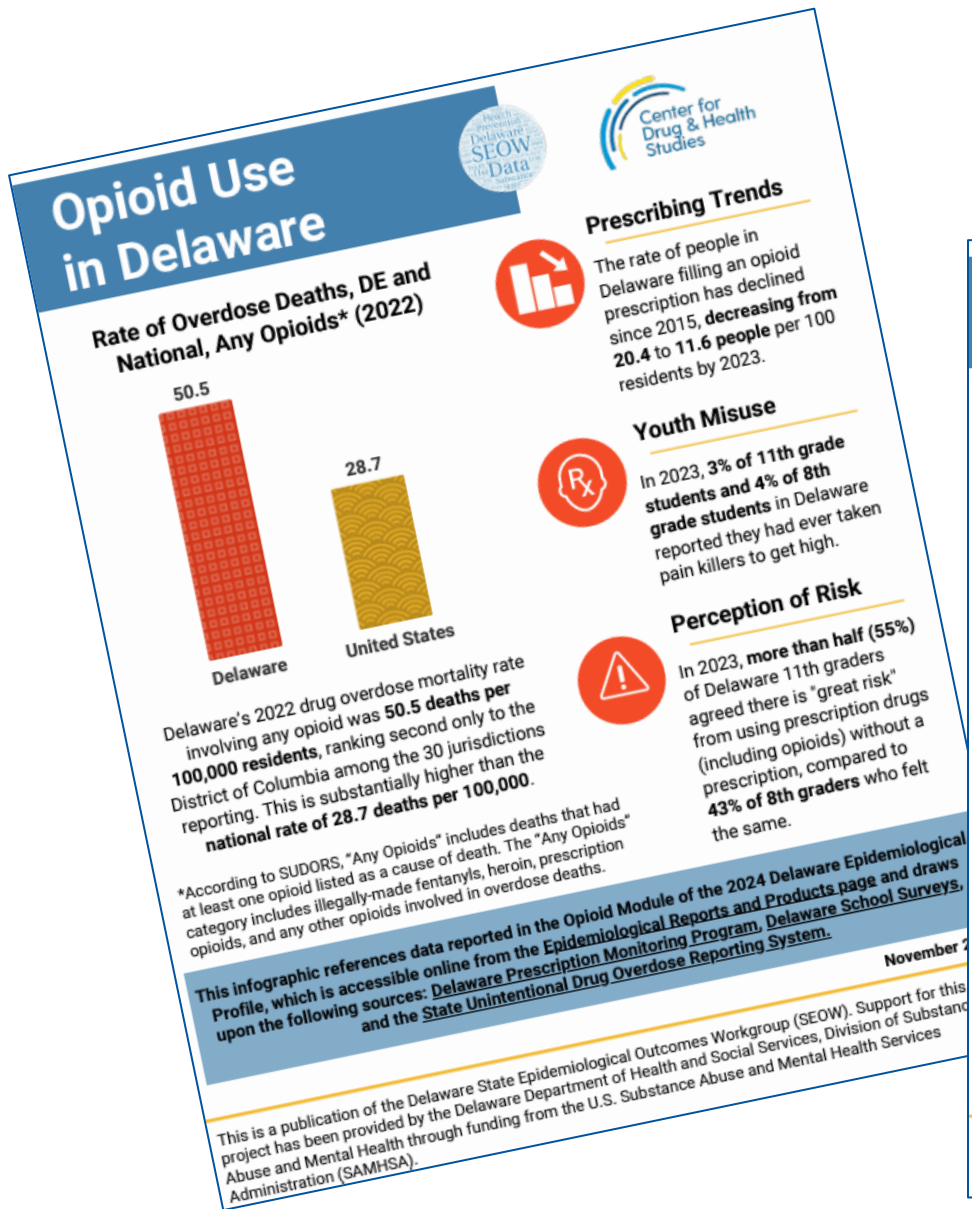
Data Instrument	Most Recent Data
Delaware's Annual Traffic Statistical Report	2023
Delaware Behavioral Risk Factor Surveillance System (BRFSS)	2022
Delaware Division of Forensic Science Annual Report	2023
Delaware Division of Public Health, Emergency Medical Services and Preparedness Section	2017-2021
Delaware Division of Substance Abuse and Mental Health – Behavioral Health Crisis Calls	2023
Delaware Infants with Prenatal Substance Exposure (IPSE)	2017-2020
Delaware Online/NewsJournal Gun Violence Database	2024
Delaware Prescription Monitoring Program (PMP)	2023
Delaware School Survey (DSS) – 5 th grade	2023
Delaware School Survey (DSS Secondary) – 8 th and 11 th grades	
Delaware Youth Risk Behavior Survey (YRBS) – High School	
Delaware Youth Risk Behavior Survey (YRBS) – Middle School	2021
Healthcare Cost and Utilization Program (HCUP) Fast Stats – Neonatal Abstinence Syndrome Severe Maternal Morbidity	2016-2020
Household Pulse Survey	2024
National Highway Traffic Safety Administration	2018-2022
National Survey of Children's Health (NSCH)	2021-2022
National Survey on Drug Use and Health (NSDUH)	2021-2022
Pregnancy Risk Assessment Monitoring System (PRAMS)	2022
State Unintentional Drug Overdose Reporting System (SUDORS)	2022
Treatment Admissions Data (TEDS)	2021
U.S. Census Bureau, American Community Survey 5-Year Estimates (ACS)	2018-2022

Data Sources

Additional data sources:

- American Psychological Association
- Center for Drug and Health Studies, University of Delaware
- Crisis Text Line
- Delaware Department of Health and Social Services, Division of Public Health, My Healthy Community
- Delaware Drug Monitoring Initiative
- Drug Enforcement Administration
- Gallup
- National Conference of State Legislatures
- National Institute on Alcohol Abuse and Alcoholism
- National Institute of Mental Health
- National Institute on Drug Abuse
- National Institutes of Health
- National Survey on Gambling Attitudes and Gambling Experiences
- The Trevor Project
- The Williams Institute
- U.S. Centers for Disease Control and Prevention (Alcohol-Related Disease Impact [ARDI])

2024 Infographic Series



Data

- The data are compiled from over 30 state and national data sources.
- Includes topics related to mental health and wellbeing, patterns of substance use and its consequences, and risk and protective factors for people in Delaware.
 - Highlights issues that warrant attention.
 - Includes populations that may experience disproportionate risk.
 - Guidelines for interpreting data presented in the report can be found in the [2024 Companion Guide](#)
 - Reporting Small Numbers
 - Rounding
 - Missing Observations
 - Discrepancies in Reporting
 - Statistical Significance
 - Weighted Data

A note on word choice in the report:

- Language frames how people collectively think about behavioral health and is continuously evolving.
 - SEOW strives to use language that is accurate, respectful, free of stigma, strength-based, trauma-informed, and inclusive and culturally responsive.
- Much of the data and information reported in SEOW data products are drawn from other sources. To preserve accuracy, whenever possible, the editors use the words, phrases, and data labels that are used in the original sources even if these terms are not necessarily the terms they would use as researchers, practitioners, or prevention specialists.

2024 Delaware State Epidemiological Profile

An Overview of Key Findings

E-Cigarettes (Vaping) and Tobacco

Despite declining rates of tobacco use, **nearly one in five Delawareans** aged 12 and older report using a **tobacco product during the past month**

[\(2021-2022 NSDUH\)](#).

In 2022, **6.1% of DE adults** reported that they currently used **e-cigarettes**

[\(BRFSS, 2022\)](#).

One in four 11th grade students report that they used an **e-cigarette or vaping device** at some point in their lifetime, and **10%** report current or past month use

[\(DSS, 2023\)](#).

Alcohol

About **half** of Delawareans aged 12 and older report alcohol use *within the past month*

([NSDUH, 2021-2022](#)).

Binge drinking rates are the **highest among the 18–25 year-old** age group
Nearly 1 in 3 of this group reporting the behavior

([NSDUH, 2021-2022](#)).

More than 4 in 10 Delawareans perceive **drinking five or more drinks** once or twice a week to be a *great risk*

([NSDUH, 2021-2022](#)).

Marijuana

Nearly **one in six**
(14.13%)
Delawareans aged
12 and over used
marijuana in the
past month

([NSDUH, 2021-2022](#)).

The [2023 DSS](#) reports
that **one in four 11th**
grade students have
used **marijuana in the**
past year.

39% of the 11th
grade students that
report using
marijuana in the past
year also reported
experiencing 3 or
more adverse
childhood
experiences

([DSS, 2023](#)).

Opioids

The rate of people in **Delaware** filling an **opioid prescription** has **declined** since 2015, decreasing from **20.4 to 11.6 people per 100 residents** by 2023 ([Delaware Prescription Monitoring Program](#)).

According to the [CDC State Unintentional Drug Overdose Reporting System \(SUDORS\)](#), Delaware's 2022 drug overdose mortality rate involving any opioid was **50.5 deaths per 100,000 residents**. This is the **second highest rate** among the 30 jurisdictions reporting.

Other Illegal Drugs

Findings from the [2021-2022 NSDUH](#) estimates that **3.42% of Delawareans aged 12 and older** used an **illicit drug** other than marijuana in the **past month**.

The **highest rate** was reported by the **18 to 25** year old age group (5.62%).

Mental Health

The [2021-2022 NSDUH](#) estimates indicate that **36.14%** Delaware adults aged 18 to 25 had a **mental illness in the past year.**

According to the [Division of Forensic Services \(DFS\)](#), there were **145 deaths by suicide** certified in Delaware in 2023.

Among 11th graders, **one in five (21%) report feeling down, depressed, or hopeless** on more than **half of the days in the past two weeks** ([DSS, 2023](#)).

Special Populations: Mental Health & Substance Use

According to the [2022 BRFSS](#), **45.5% of Delaware adults with a disability report ever having depression compared to 13.8% among other adults.**

The [2023 DSS](#) indicates that **8th grade LGBTQ students** reported nearly **twice the rate of recent use of alcohol, marijuana, and vaping products** compared to other students.

Approximately **39%** of 11th grade students **who never or do not often feel safe** at school report recent **feelings of anxiety** compared to **23% of students who report they feel safe** in this setting
([DSS, 2023](#)).

Older Delawareans and Behavioral Health

Question: Why is this an important issue?

Older Delawareans and Behavioral Health

Substance Use Rates for Adults 65 and Older
from the 2022 Delaware Behavioral Risk Factor Surveillance System (BRFSS)

Vaping and Tobacco

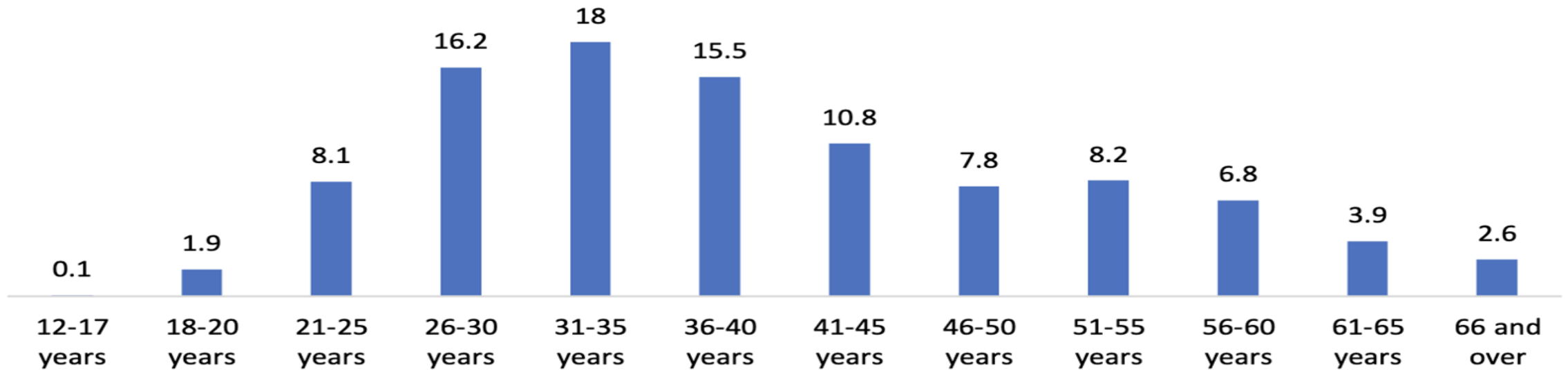
1.2% current e-cigarette users
7.7% current smokers

Alcohol

Nearly half (46.3%) report having at least one alcoholic drink and
1 in 20 older adults (5.6%) report binge drinking within the previous month

Older Delawareans and Behavioral Health

Treatment Episode Data (TEDS), 2021
Admissions by Age, All Substances (*in percentages*)



Older Delawareans and Trauma

According to the 2024 Annual Delaware Forensic Report, 5 of the 54 deaths by homicide recorded in 2023 were of individuals over 60 years old (9%).

Between January 1st, 2024 and September 1st, 2024, 22 of 134 (16%) gun violence victims were aged 45 and older , according to the Delaware Gun Violence Database posted by Delaware Online/The News Journal.

Older Delawareans and Behavioral Health

Group Discussion:

Data Challenges?

Protective Factors?

Questions?

For more information...

M. J. Scales

mjscales@udel.edu

Sharon Merriman-Nai

smnai@udel.edu

Center for Drug and Health Studies
at the University of Delaware

<https://cdhs.udel.edu/>

Suggested citation for report:

Center for Drug and Health Studies, University of Delaware. (2024). The 2024 Delaware Epidemiological Profile: Substance Use, Mental Health, and Related Issues. Prepared for the Delaware Division of Substance Abuse and Mental Health and the Delaware State Epidemiological Outcomes Workgroup.

MEMBER NETWORK SHARE OUT



THANK YOU!
WE WILL SEE YOU IN SEPTEMBER 2025

