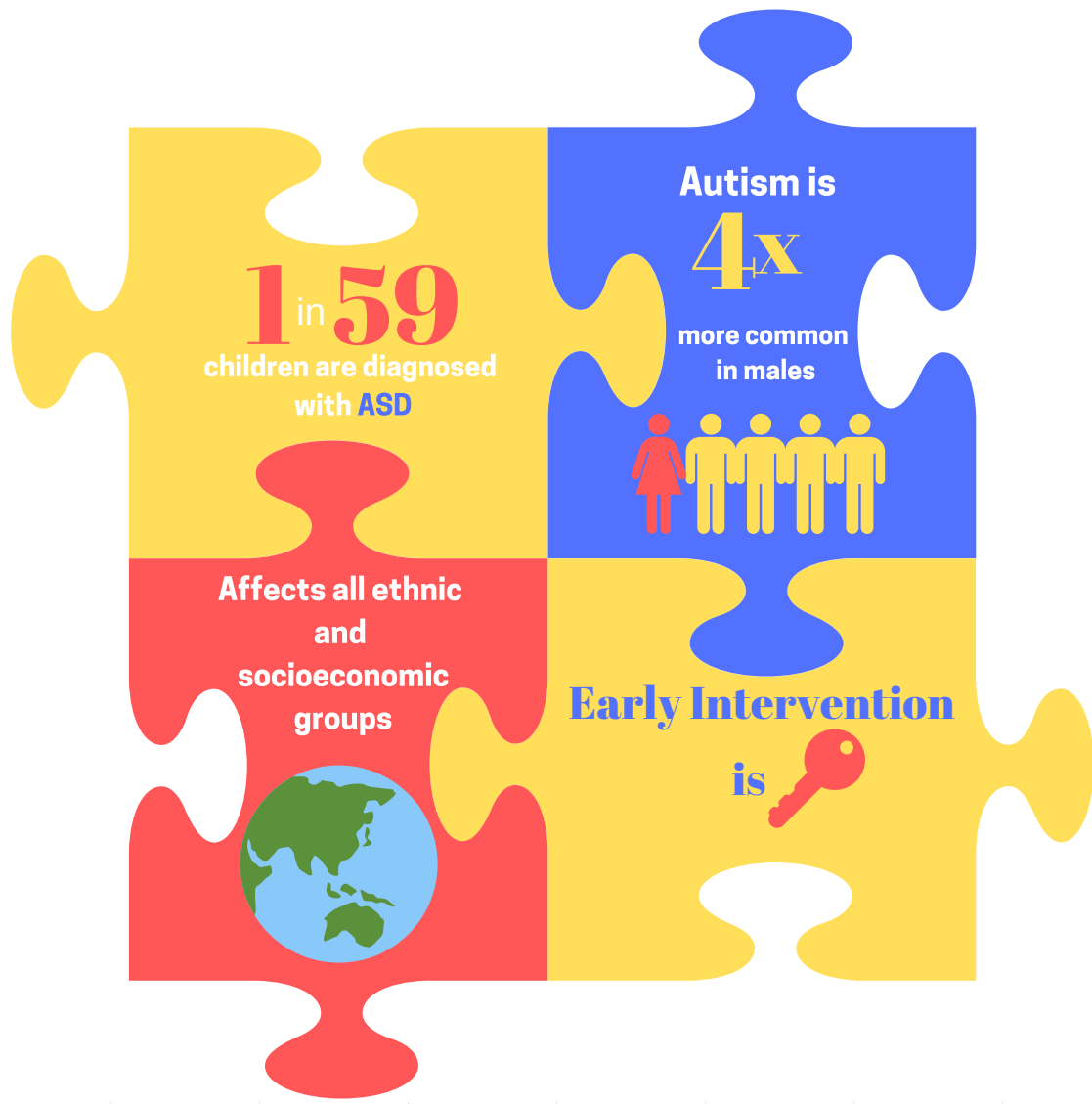


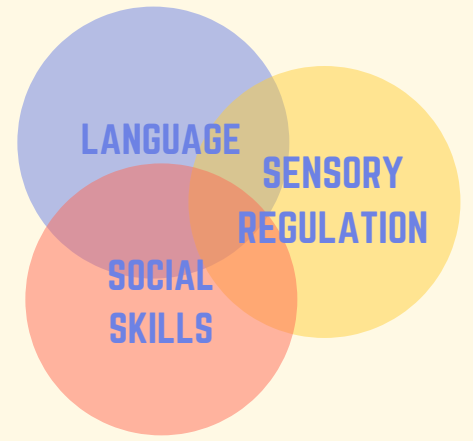
PARENT TRAINING IN CHILDREN WITH AUTISM SPECTRUM DISORDER

THE EARLY START DENVER MODEL

AUTISM SPECTRUM DISORDER (ASD) FAST FACTS



ASD IMPACTS



IMPORTANCE OF PARENT TRAINING



learning across settings

increased skills & confidence

continuous treatment →

THE EARLY START DENVER MODEL (ESDM)

WHAT IS IT?

A comprehensive therapy for **toddlers with ASD** that focuses on **improving** verbal and nonverbal communication, joint attention, social interaction and engagement, imitation, play and cognition.

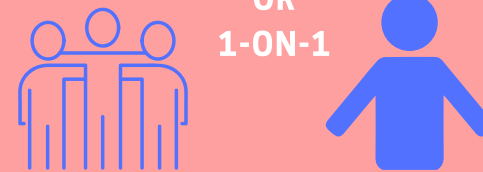


CAN BE USED IN



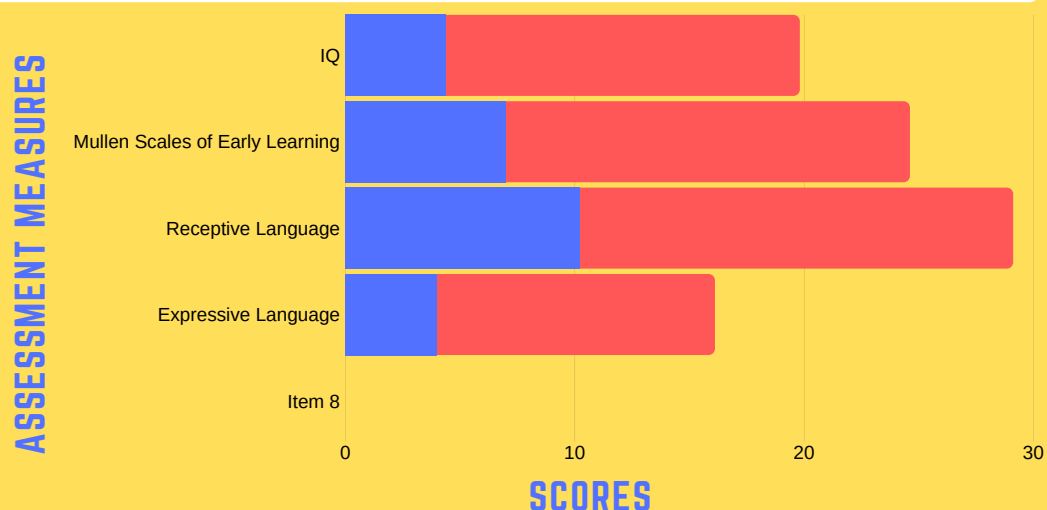
PARENT INVOLVEMENT IS KEY TO SUCCESS

GROUPS OR 1-ON-1



EFFECTIVE for children with **WIDE** range of learning STYLES & ABILITIES

PARENT INVOLVEMENT & ESDM



GRAPH KEY

Parents provided with manuals and reading materials about ESDM, no training

ESDM implemented with trained therapists combined with parent training



TAKEAWAY:
PARENT TRAINING IMPROVES SUCCESS OF EARLY START DENVER MODEL

Dawson, G., Rogers, S., Munson, J., Smith, M., Winter, J., Greenson, J., Varley, J. (2010). Randomized, controlled trial of an intervention for toddlers with autism: The Early Start Denver Model. *Pediatrics*, 125(1)

Completed by: Veronica DeJesus, Sarah Dombroski, and Sierrah Harris as part of CSCD 713

Sources: Autism Facts and Figures. (n.d.). Retrieved from <https://www.autismspeaks.org/autism-facts-and-figures> – Dawson, G., Rogers, S., Munson, J., Smith, M., Winter, J., Greenson, J., Varley, J. (2010). Randomized, controlled trial of an intervention for toddlers with autism: The Early Start Denver Model. *Pediatrics*, 125(1), e17-e23. doi:10.1542/peds.2009-0958 – McConachie, H., & Diggle, T. (2007). Parent implemented early intervention for young children with autism spectrum disorder: A systematic review. *Journal of evaluation in clinical practice*, 13(1), 120-129. – Ryberg, K. H. (2015). Evidence for the implementation of the Early Start Denver Model for young children with Autism Spectrum Disorder. *Journal of the American Psychiatric Nurses Association*, 21(5), 327-337. – Vismara, L., McCormick, C., Wagner, A., Monlux, K., Nadhan, A., & Young, G. (2018). Telehealth parent training in the early start denver model: Results from a randomized controlled study. *Focus on Autism and Other Developmental Disabilities*, 33(2), 67-79.