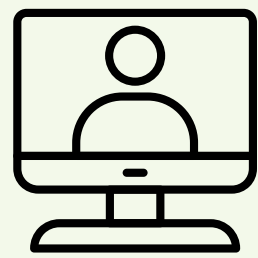


THE ENERGY BALANCE AND NUTRITION LABORATORY INVITES YOU AND YOUR CHILD TO PARTICIPATE IN THE

DIETARY APPROACHES FOR CARDIOVASCULAR HEALTH STUDY

DO YOU CURRENTLY SMOKE, HAVE HIGH BLOOD PRESSURE, HIGH CHOLESTEROL, DIABETES, ARE INACTIVE, OR ARE OVERWEIGHT/OBESE AND HAVE A CHILD 6-12 YEARS OLD?



THE STUDY INCLUDES:

- 5 IN-PERSON ASSESSMENT VISITS
- 14 GROUP SESSIONS VIA ZOOM AND 14 INDIVIDUAL SESSIONS WITH A HEALTH COACH OVER 6 MONTHS



PARTICIPANTS COULD BE COMPENSATED UP TO \$390 FOR FULL STUDY PARTICIPATION.



CALL OR TEXT 302-722-5602 OR SCAN THE QR CODE TO SEE IF YOU QUALIFY FOR THE STUDY TODAY.

