

Elderly and Parkinson's Patients needed for Robot Reaching Experiment

Our lab studies how the brain controls movement. **We are currently recruiting people with and without Parkinson's Disease** to participate in a reaching experiment.

This ~1.5-hour experiment involves making reaching movements in a virtual reality setup while holding onto a robotic arm.

Eligibility criteria:

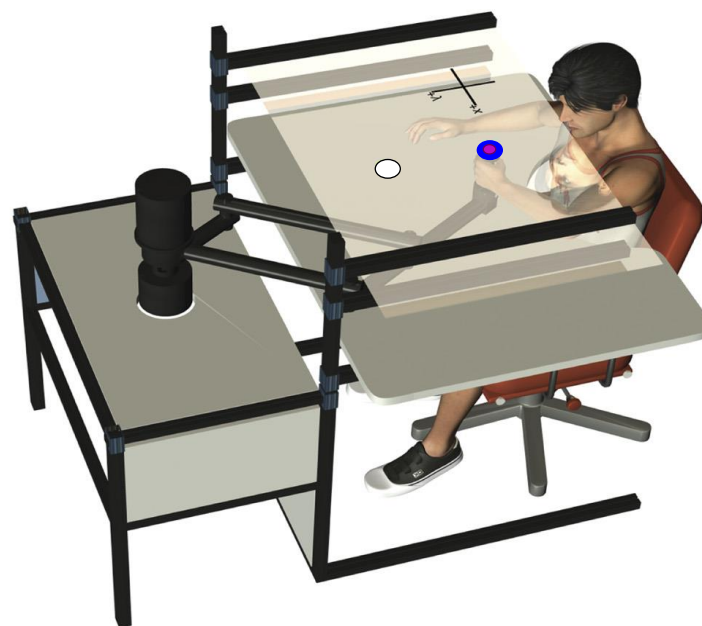
- Free of any musculoskeletal injury/disorder
- No neurological disorder other than Parkinson's
- No previous brain injury or surgery

Time commitment:

~ 1.5 hour

Compensation:

\$10 base + up to \$10 bonus



If interested, please contact cashacklab@gmail.com