

LIVESTOCK HEALTH CERTIFICATES FOR YOUTH EXHIBITORS



DELAWARE DEPARTMENT OF
AGRICULTURE

GENERAL INFORMATION

If you plan to attend an out-of-state livestock show or expo this show season, you must get a health certificate to travel. Health certificates are only valid for 30 days.

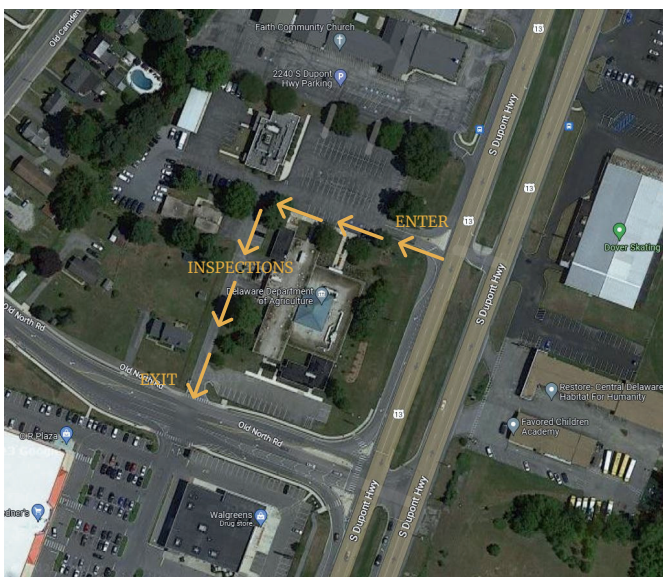
WHAT TO HAVE READY

For a quick and easy process, please ensure you have the following with you:

- Official identification (RFID tags, 840 tags, scrapie tags, microchips, and/or tattoos)
- All tattoo characters must be legible, and you must bring registration paperwork.
- If the show requires specialized testing, you must bring the lab results for review.

DELAWARE DEPARTMENT OF AGRICULTURE LOCATION INFORMATION

When you arrive to DDA, enter the parking lot from Route 13. You will drive through the parking lot to the west side of the building. After the inspection, you will exit on the south side of the building onto Old North Rd. The map below indicates the flow of traffic.



INSPECTION DATES

Tuesday, May 14
Tuesday, June 11
Tuesday, July 16
Tuesday, August 13

Time Slots:
8:30 - 11:00 a.m.
3:00 - 5:30 p.m.

Inspection Location:
2320 S. DuPont Hwy, Dover

Registration Required

Can't attend?
Use the QR Code to visit the
Livestock Veterinarian
Resource Guide

REGISTRATION FORM



CONTACT US



302-698-4500



deanimalhealth@delaware.gov