

# Multi-decadal climate variability in observed and modeled surface temperatures

Sergey Kravtsov and Christopher Spannagle

Department of Mathematics, University of Wisconsin-Milwaukee, P.O. Box 413, Milwaukee, WI 53201

## Introduction

Non-uniformity in the global warming trend is usually attributed to corresponding non-uniformities in the external forcing. Alternative hypothesis involves multi-decadal climate oscillations affecting the rate of global surface temperature change. We use 20-th century observations of global surface temperature combined with analysis of coupled GCM simulations in an attempt to differentiate between the externally forced and natural aspects of the observed temperature variability.

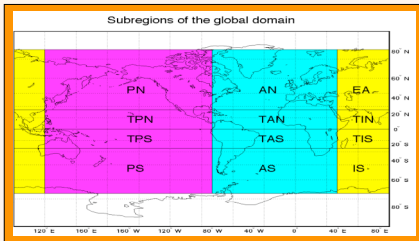


Fig. 1. The surface temperature record will be averaged within twelve sub-domains of the global domain corresponding to four latitude bands and Pacific, Atlantic, and Indian/Eurasian sectors, respectively.

## Observational analysis

The time series (PCs) of the leading empirical orthogonal functions associated with multi-region surface temperature variability (see Fig. 1) are shown in Fig. 2, while the corresponding global patterns are displayed in Fig. 3. The leading PC represents non-uniform global warming trend (characterized by high cross-region temporal correlations); the next two time series, as well as the associated spatial patterns are in quadrature and strongly hint to a multi-decadal oscillation with a time scale of about 60–80 yrs.

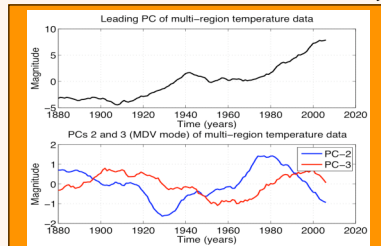


Fig. 2. Leading principal components of multi-region (see Fig. 1) surface temperature anomaly data based on Goddard Institute for Space Studies [GISS] data set [Hansen et al. 1999; Reynolds et al. 2002]: <http://data.giss.nasa.gov/gistemp/>.

## Observed multi-decadal variability

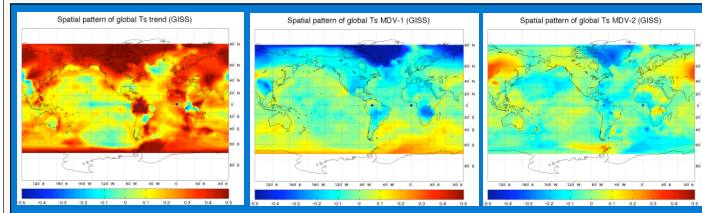


Fig. 3. Spatial patterns of three leading modes of the global surface temperature. The patterns characterizing multi-decadal variability with a period of 60–80 yrs have pronounced centers of action in Labrador and Weddell Seas – both are climatically important sites of deep-water formation. Variability is also fairly strong over eastern part of Eurasia.

## Comparison with models

We have used for our analysis a 14-model ensemble from the IPCC data archive (multiple realizations of the 20-century climate for each model). We first computed, for each model, the single ensemble mean surface temperature time series by averaging over all available model runs. These time series were then averaged to get the multi-model ensemble mean temperature time series. The results for globally averaged temperature are shown in Fig. 4. The models do a good job in representing temperature variability, with notable

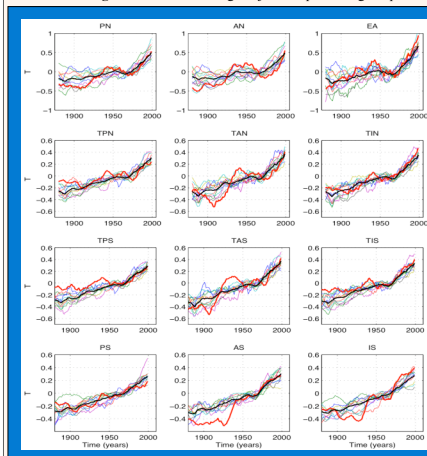


Fig. 5. Multi-region temperature variability in models and data (the index of a region is given in the caption of each panel). Light lines: individual model ensemble means (each line thus represents the average over 20-century climate realizations of the same model). Heavy black lines: average over all runs of all models (that is, average over the temperature time series represented by light lines). Heavy red lines: observed time series of surface temperature.

exception of local troughs in the 1910s and 70s and a crest around 1940. The regional deviations of simulated temperature from the observations (Fig. 5) are more pronounced and have a similar oscillatory structure in the Northern Hemisphere.

Time series of the leading EOF of multi-region data-model surface temperature difference, along with the corresponding spatial pattern, are shown in Fig. 6. The temperature difference appears to be dominated by an oscillation whose time scale and spatial pattern are not unlike those of the observed multi-decadal variability (Figs. 2 and 3). This suggests that the main difference between observed and simulated time series is the lack of multi-decadal signal presumably associated with natural climate variability. The ensemble-mean surface climate is thus interpreted as our best guess of climate response to external forcing dominated by anthropogenic sources.

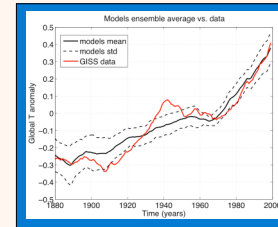


Fig. 4. Global temperature time series in models and data.

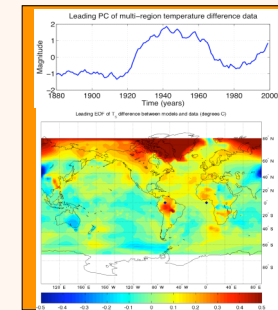


Fig. 6. The leading EOF of the difference between the observed multi-region surface temperature and models' ensemble mean time series. Note apparent similarities between the time scale (Fig. 2) and spatial pattern (Fig. 3) of observed multi-decadal variability and those of the models–data difference depicted here.

## Discussion

Traditional interpretation of the decreasing global-mean surface temperature during the period of 1940–1970 is that it is due to tropospheric aerosols' cooling effect outweighing greenhouse-gas induced warming. Both types of forcing are incorporated in the model runs we have analyzed; yet, the simulated global temperature time series underestimates this local cooling trend (Fig. 4). Differences are even more pronounced in regional temperature averages (Fig. 5), with most amplitude in the Northern Hemisphere's Atlantic sector, including the tropics. We suggest that natural climate variability on a time scale of 60–70 yr may be partly responsible for the observed non-uniform trends (Schlesinger and Ramanakutty 1994; Delworth and Mann 2000).

The spatial pattern of multi-decadal signal in Fig. 3 has a near-zero global average. The global-mean temperature trend is almost entirely accounted for by the leading PC of the multi-region data (Fig. 2); the latter PC, when linearly detrended, is a temperature anomaly whose apparent time scale is consistent with multi-decadal signal of PCs 2 and 3. We suggest that this anomaly is due, in part, to changes in the ocean uptake of CO<sub>2</sub> associated with multi-decadal natural signal.

## References

- Delworth, T. L., and M. E. Mann, 2000: Observed and simulated multidecadal variability in the Northern Hemisphere. *Clim. Dyn.*, **16**, 661–676.
- Hansen, J., R. Ruedy, J. Glascoe, and M. Sato, 1999: GISS analysis of surface temperature change. *J. Geophys. Research*, **104**, 30,997–31,022.
- Reynolds, R. W., N. A. Rayner, T. M. Smith, D. C. Stokes, and W. Wang, 2002: Improved global sea surface temperature analysis. *J. Climate*, **15**, 1609–1625.
- Schlesinger, M.E., and N. Ramanakutty, 1994: An oscillation in the global climate system of period 65–70 years. *Nature*, **367**, 723–726.

## Acknowledgments

We acknowledge international modeling groups for providing, and PCMDI for collecting and archiving the data. The IPCC Data Archive at LLNL is supported by the U. S. Department of Energy. It is our pleasure to thank A. A. Tsonis for encouragement and helpful discussions. This research was supported by the Department of Energy grant DE-FG-03-01ER63260 and by the National Aeronautics and Space Administration grant NNG-06-AG66G-1.

## For further information

Please contact [kravtsov@uwm.edu](mailto:kravtsov@uwm.edu). A PDF-version of this poster can be found at [www.uwm.edu/~kravtsov/downloads/WMO2006\\_poster.pdf](http://www.uwm.edu/~kravtsov/downloads/WMO2006_poster.pdf).