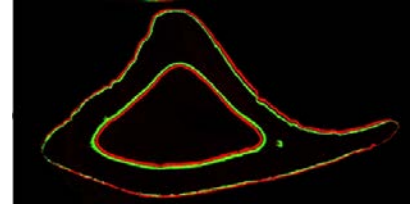


POST-DOCTORAL RESEARCH ASSOCIATE

Skeletal Mechanobiology & Osteoporosis

Silva Lab, Orthopaedic Surgery & Musculoskeletal
Research Center, Washington University, Saint Louis



The Orthopaedic Research Labs (PI: [Matthew Silva](#)) in the Department of Orthopaedic Surgery, Washington University in Saint Louis has an immediate opening for a post-doctoral research associate in the area of Skeletal Mechanobiology & Osteoporosis. The associate will work on studies that utilize mice to study how mechanical loading stimulates bone formation, and how to enhance the response to loading in conditions of osteoporosis and aging. You will join a multidisciplinary orthopaedic research laboratory, part of the dynamic community of the Washington University Musculoskeletal Research Center (<https://musculoskeletal.wustl.edu>).

Applicants must possess a Ph.D. in cell or molecular biology, biomedical engineering, or a closely related field. Preference will be given to applicants with a proven record in musculoskeletal research. Experience working with transgenic/knockout mice is a plus. The appointment is for a period of 2 years, with expectation of reappointment.

Applicants should apply by sending a cover letter, CV, and the names of three references via email to:

Matthew Silva
Dept. of Orthopaedic Surgery
Washington University School of Medicine
St. Louis, Missouri USA
silvam@wustl.edu

Applications will be considered until the position is filled. Inquiries may be made by email to silvam@wustl.edu. General information is available at <https://orthopaedicresearch.wustl.edu>, <https://postdoc.wustl.edu>, and <https://medicine.wustl.edu>.

(Posted January 2023)