

Yuetiva Deming
Laboratory of Carlos Cruchaga

demingy@wustl.edu

Today:

- TA responsibilities
- Presentation guidelines
- Journal club assignments

TA responsibilities

TA responsibilities

- Presentation coaching
- Website maintenance
- Food

- Contact me to review your presentation the week before that class
- No official office hours
- If you don't understand the topic, seek help from other students, professors, or the guest speaker

Presentation guidelines

Presentation guidelines:

Length

- 30 min per paper, **including discussion**
- Prepare a 15 min (maximum) presentation
- **Time limits will be strictly enforced!**

Presentation guidelines

- This is a critical review;
do not go figure-by-figure.
- Eliminate irrelevant information; pare the papers to their essentials
- Match content to time allowed

Suggested presentation outline:

1. Introduction

Suggested presentation outline:

1. Introduction
2. Hypothesis

Suggested presentation outline:

1. Introduction
2. Hypothesis
3. Experimental design

Suggested presentation outline:

1. Introduction
2. Hypothesis
3. Experimental design
4. Main findings

Suggested presentation outline:

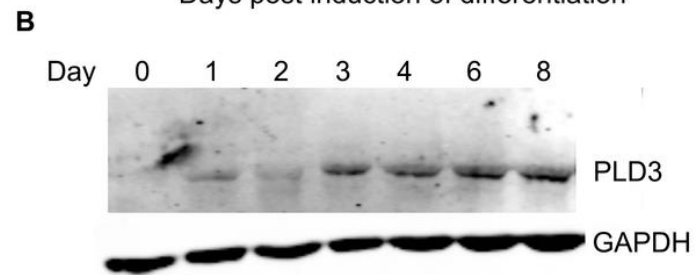
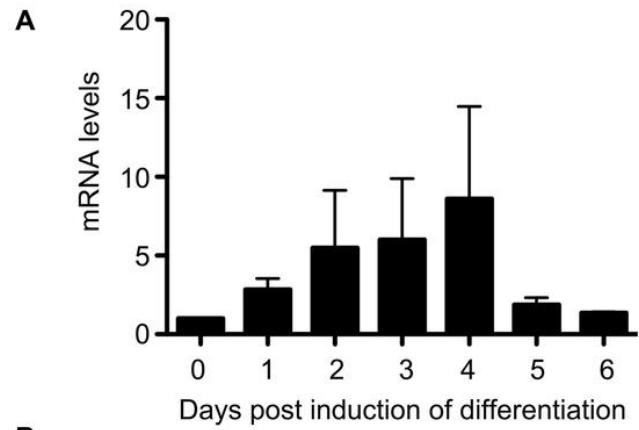
1. Introduction
2. Hypothesis
3. Experimental design
4. Main findings
5. Interpretation(s) of the data

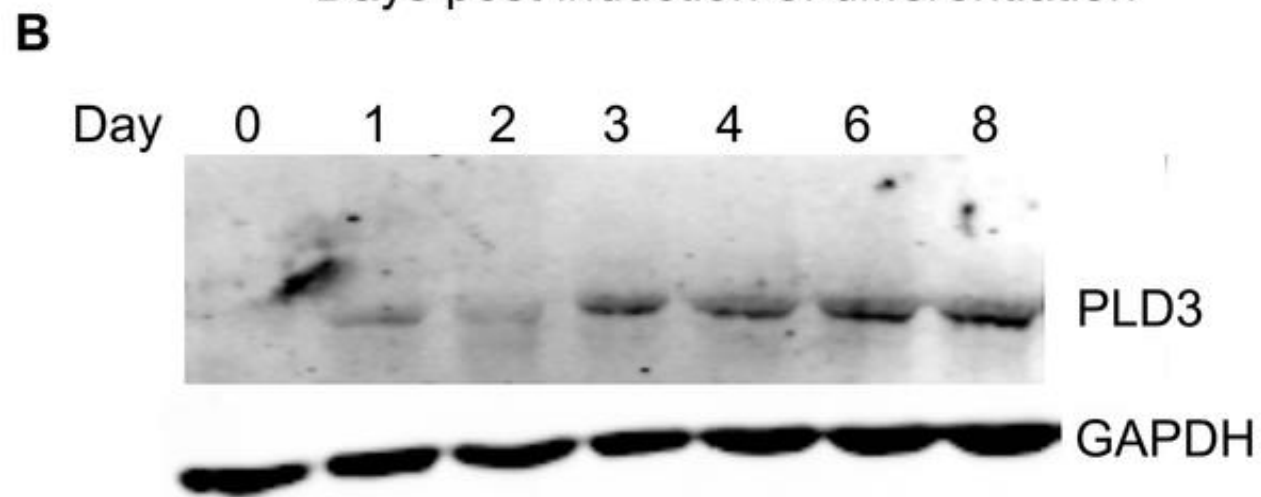
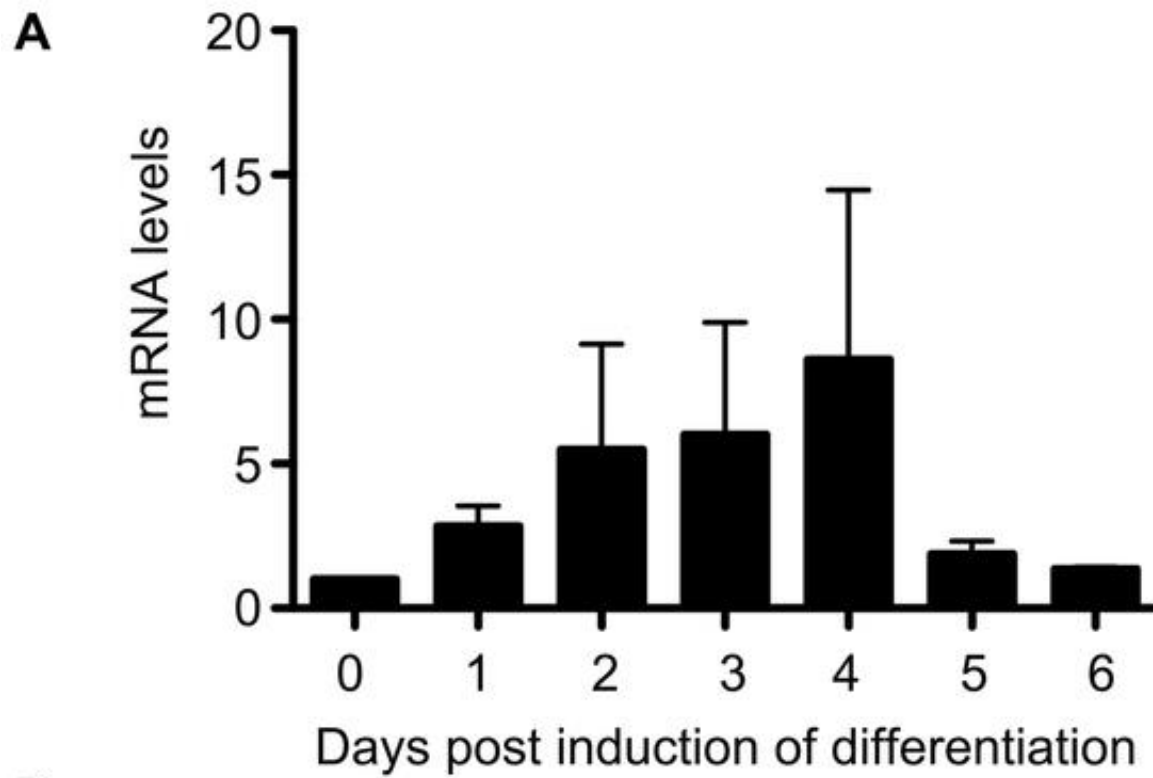
Suggested presentation outline:

1. Introduction
2. Hypothesis
3. Experimental design
4. Main findings
5. Interpretation(s) of the data
6. Future research

Presentation guidelines

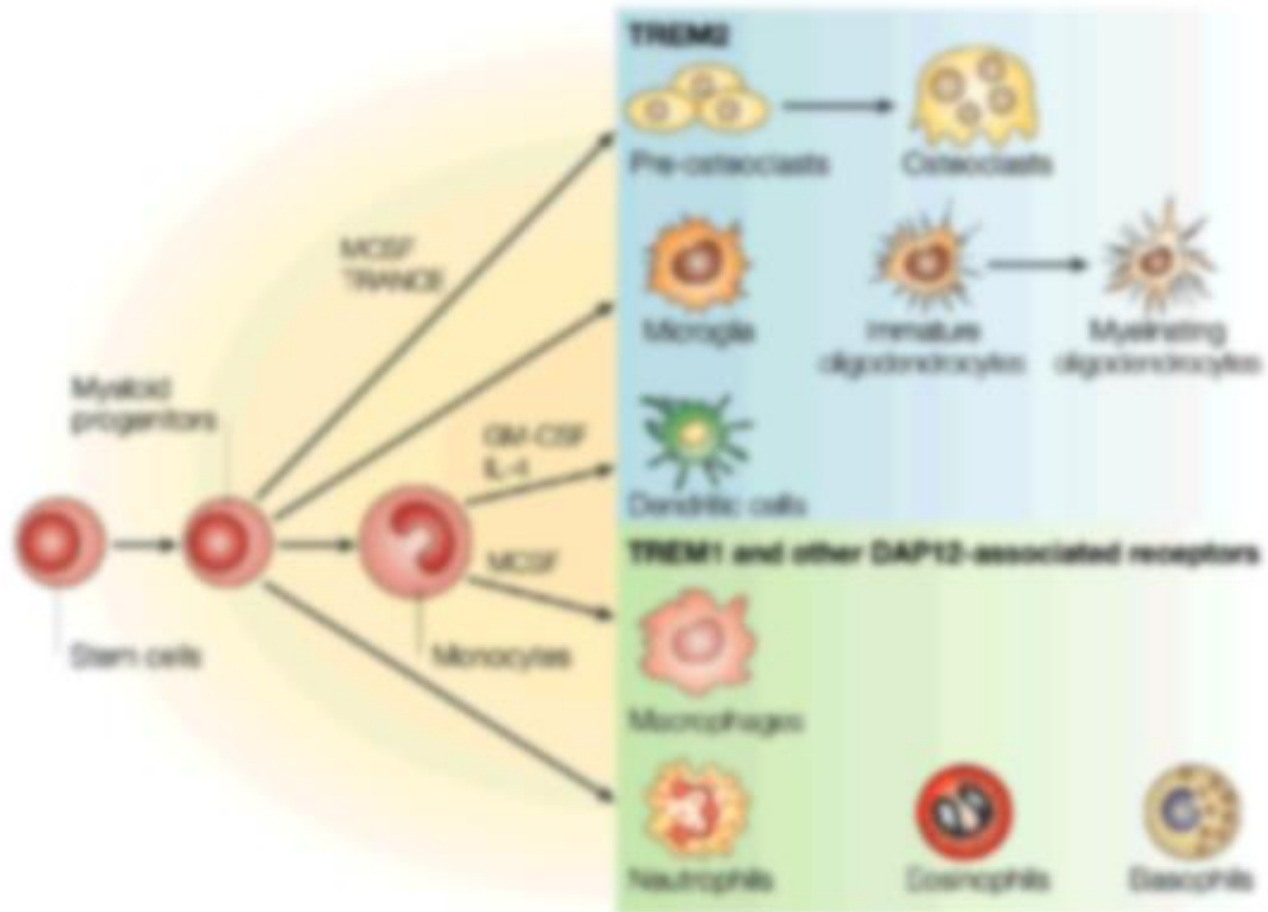
- Fonts and images should be big enough to read from the back of the room

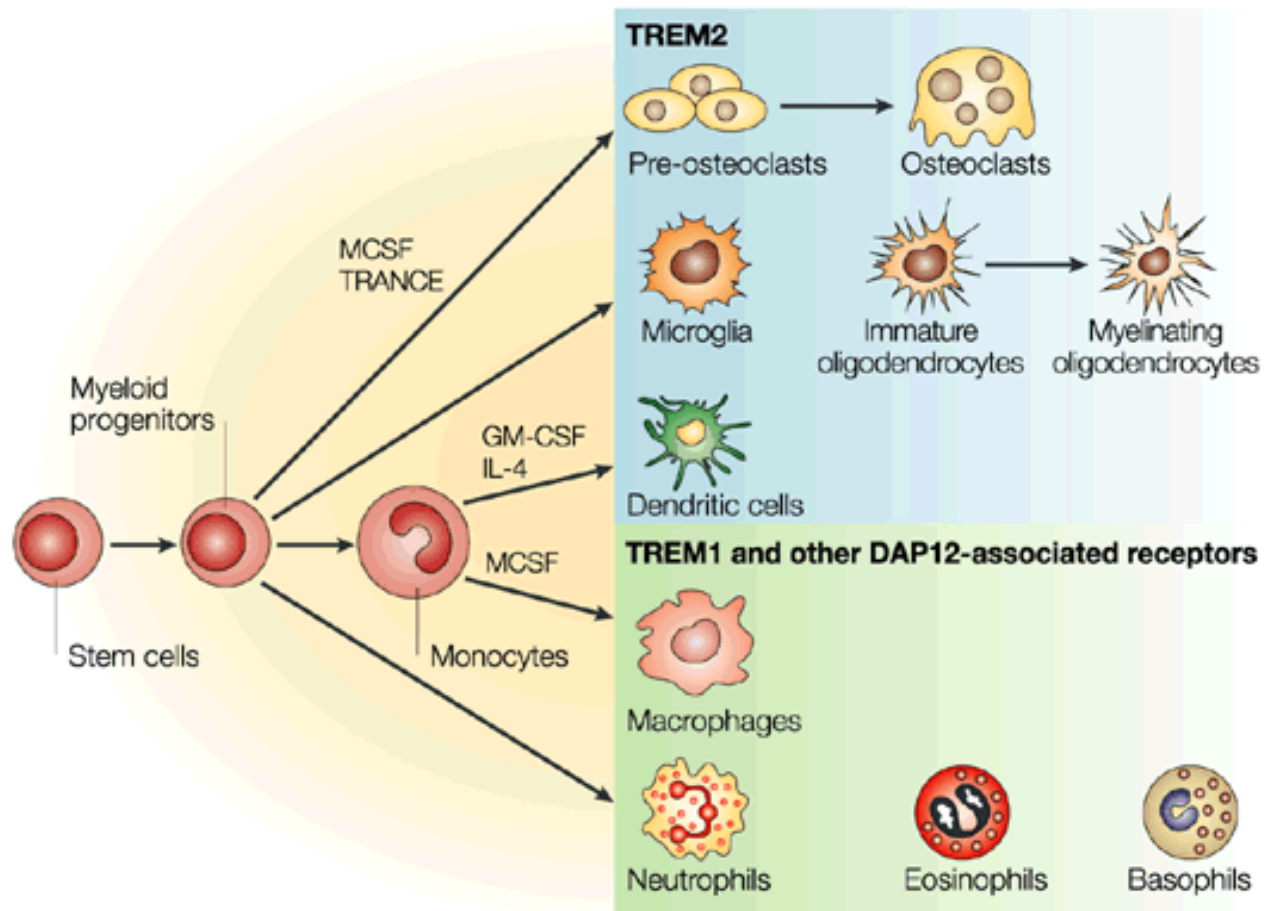




Presentation guidelines

- Images should be clear

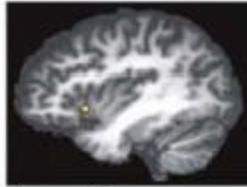




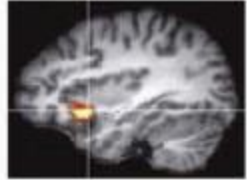
Presentation guidelines

- Eliminate distracting details

Error awareness



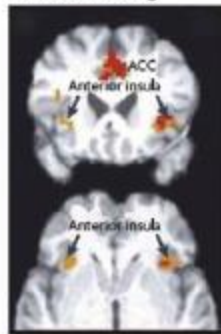
'Free won't'



Moment of recognition



Decision making



'Feeling of knowing'



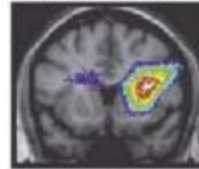
Inspection time



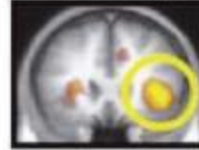
Time perception



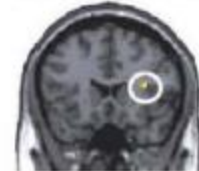
Subjective cooling



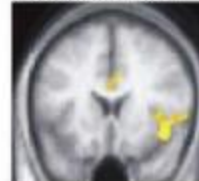
Attention to heat pain



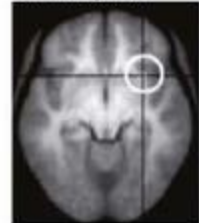
Heartbeat awareness



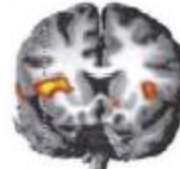
Learned pain 'now'



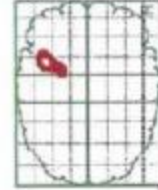
Self recognition



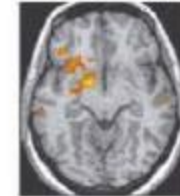
Pleasant music



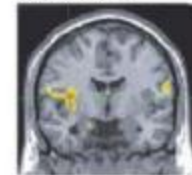
Rhythm



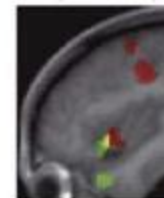
Maternal affiliation



Happy voices

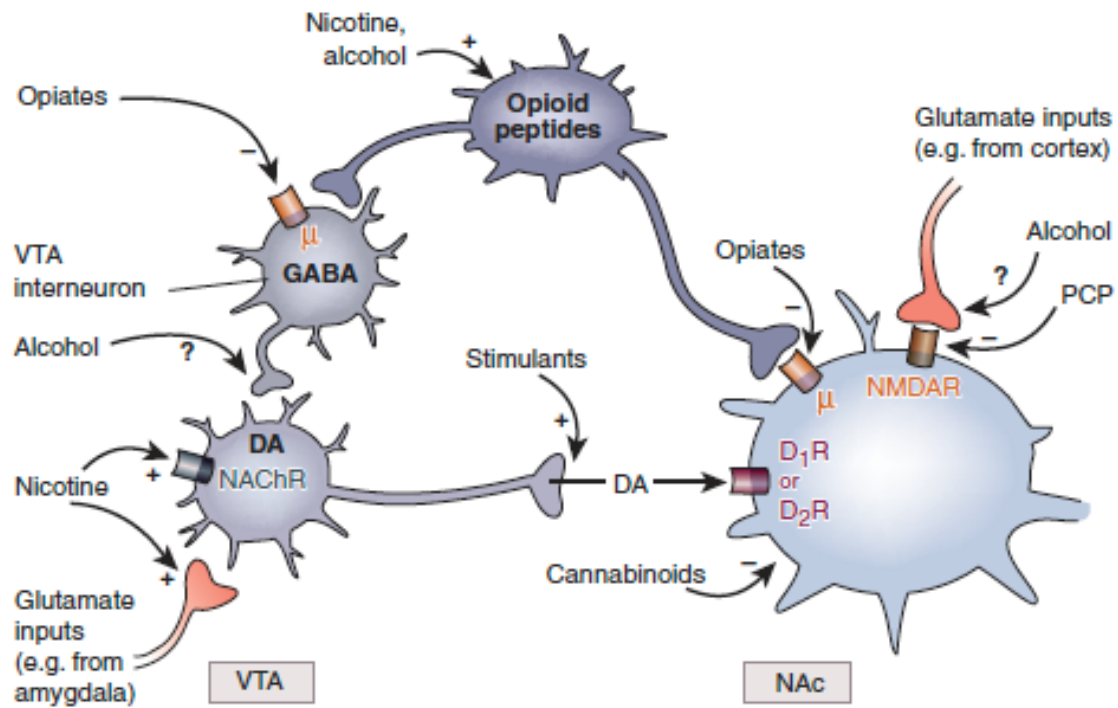


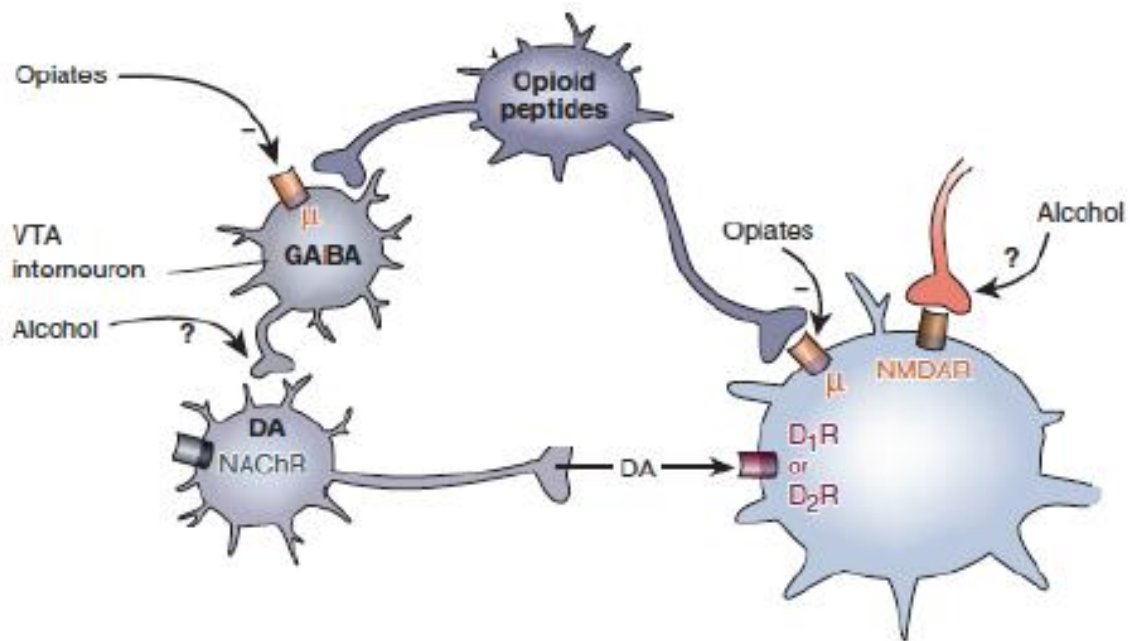
Seeing or making a smile



Attention to heat pain

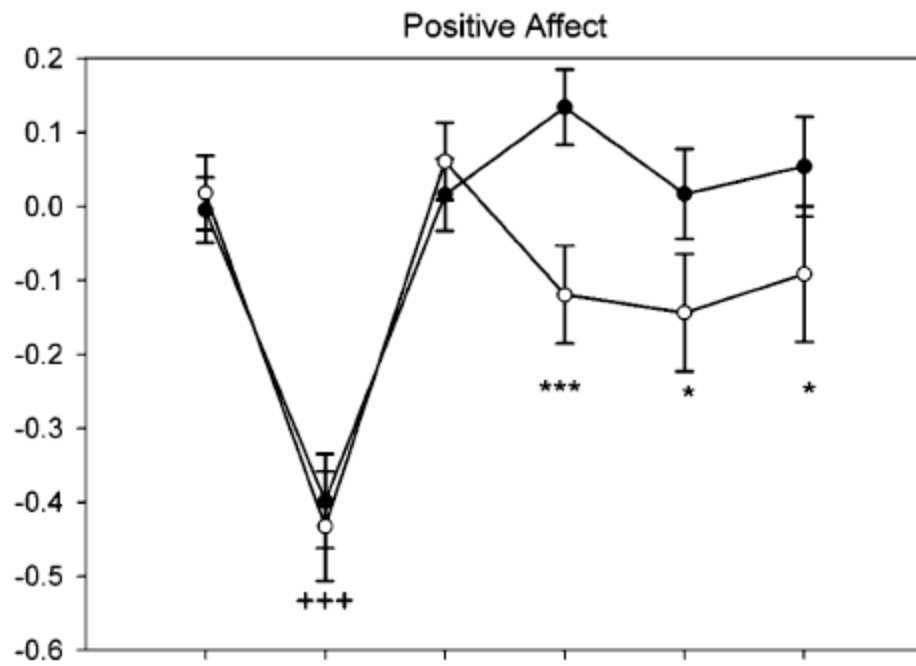


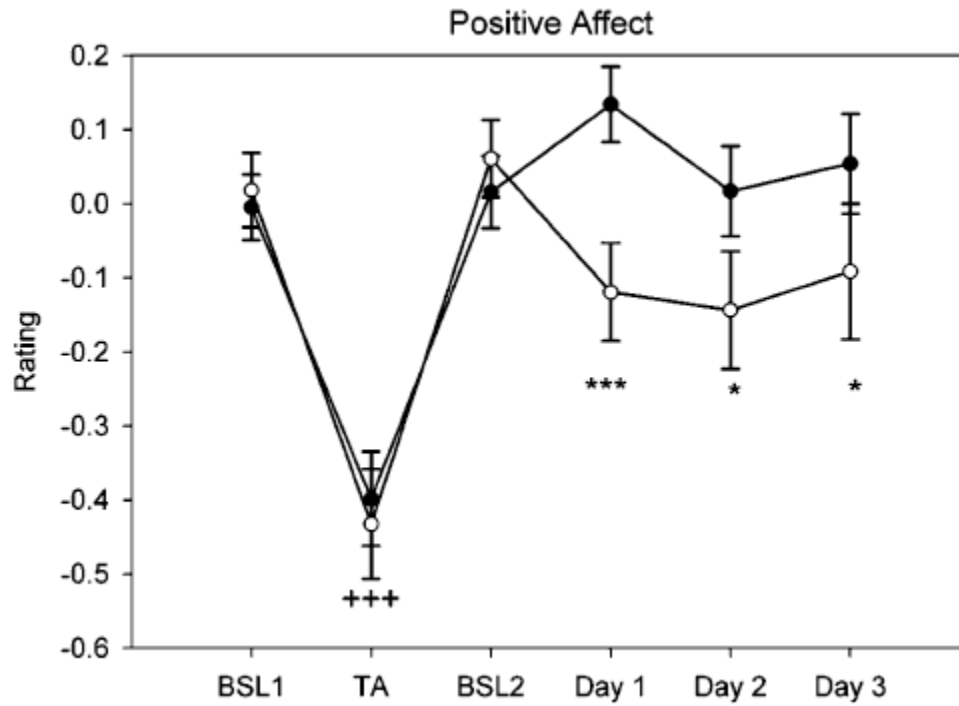




Presentation guidelines

- Include axes and titles





- Wildtype
- mutant

Presentation guidelines

- Minimize text

Presentation guidelines

- Minimize text
- Fully explain all tables, figures, etc.

Presentation guidelines

- Minimize text
- Fully explain all tables, figures, etc.
- Repeat critical points (consider outlining)

Presentation guidelines:

Citations

- Can use images from web or another paper
 - Provide appropriate citation on the same slide
- Text from any source should be in quotation marks and followed by the citation

Presentation guidelines:

Format

- PowerPoint for Windows (or PDF)
- USB flash memory drive
- PC and projector provided in the classroom

Journal club assignments