

# BIO5663: Neurobiology of Disease

TA: Ryan Raut

Laboratory of Marcus Raichle

[raut@wustl.edu](mailto:raut@wustl.edu)

\*Several slides are from Yuetiva Deming (2014 TA)

# Today

- Presentation guidelines
- Presentation sign-up
- Paper presentation

# Before your presentation

- Contact me if you would like to go over your presentation with me before class (no official office hours)
- If you have questions, please seek help from myself, other students, professors, or the guest speaker

Creating your presentation

# Presentation guidelines

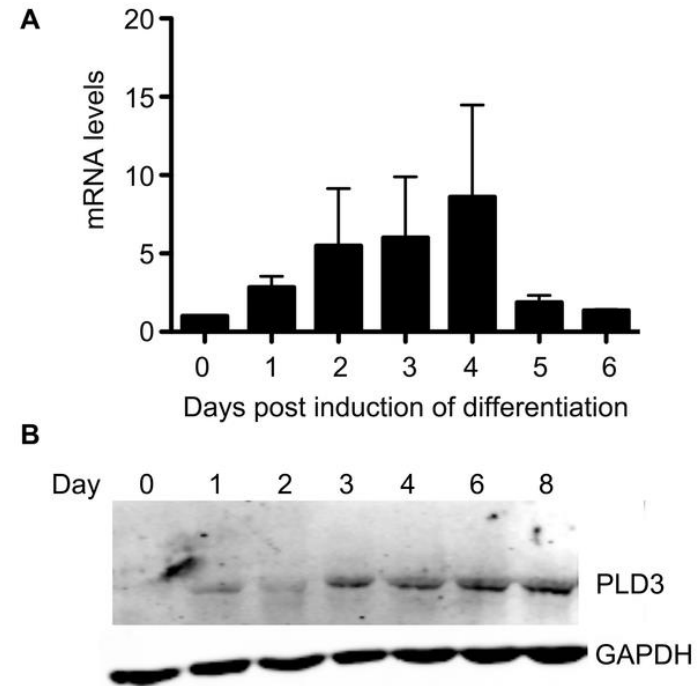
- 30 minutes per article
  - **15 minute presentation**, 15 minutes for discussion
- Present as a critical review
  - Not figure-by-figure!
  - Focus on the main points
  - Match content to time allowed

# Suggested outline

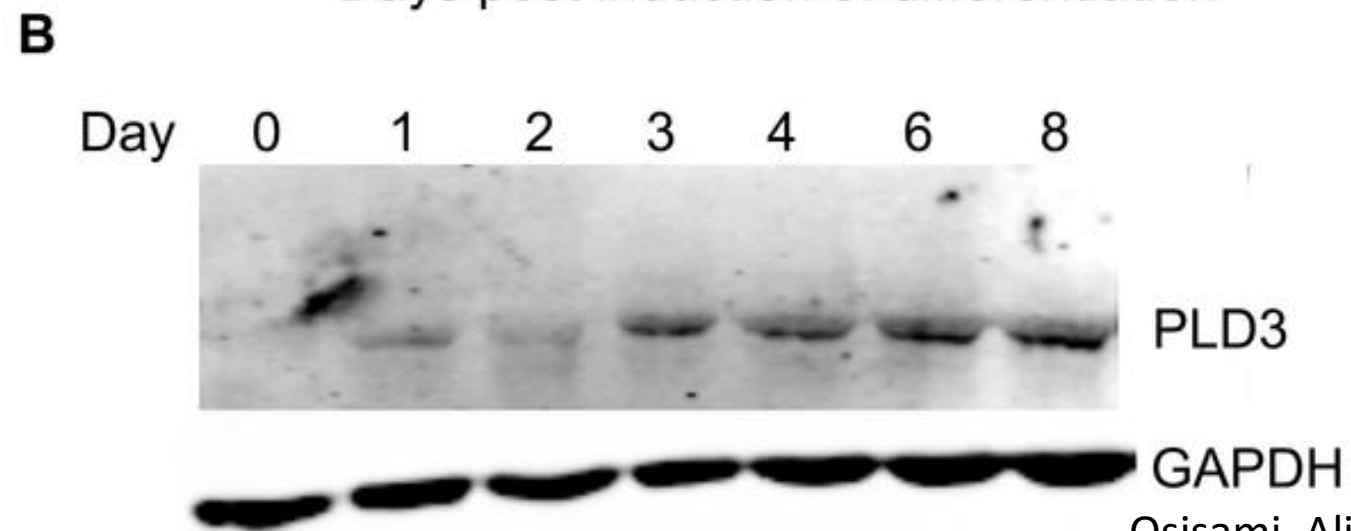
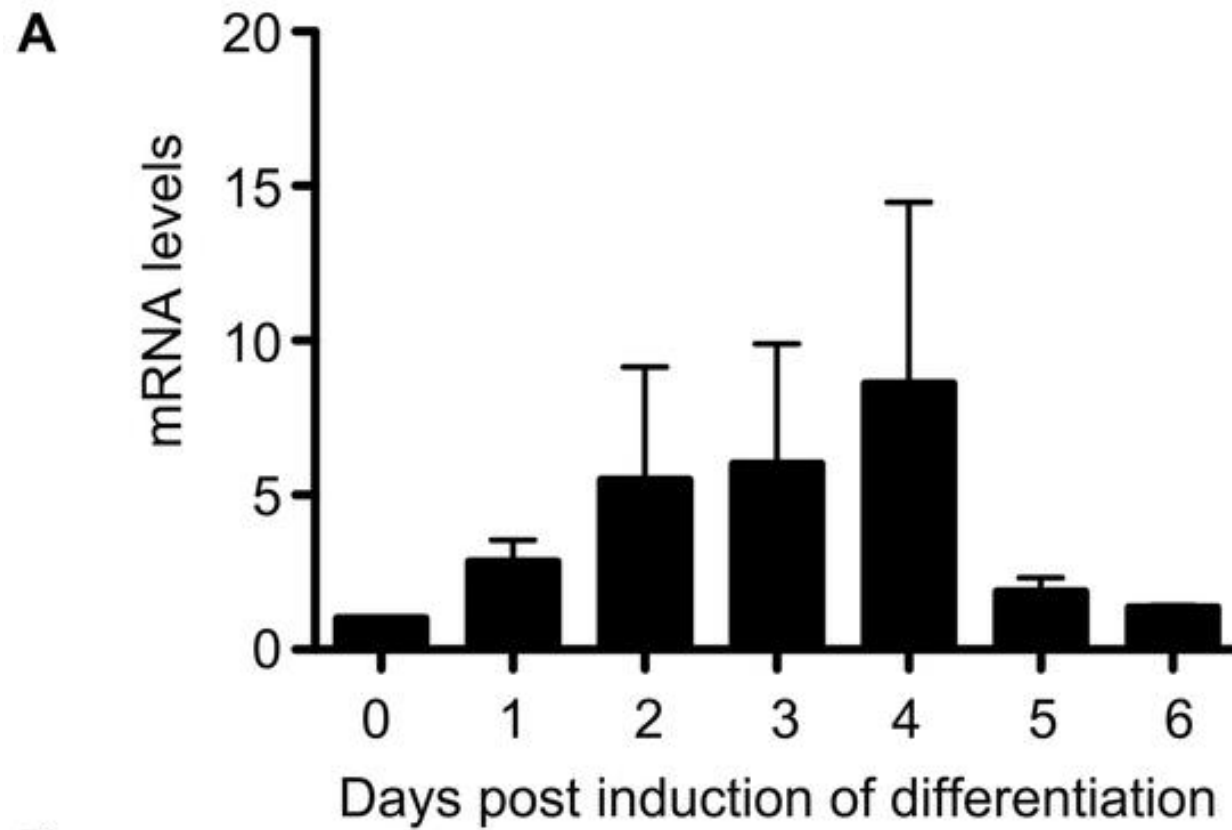
1. Background
- 2. Hypothesis**
3. Experimental design
4. Results
  - Main findings
  - **Interpretations**
5. Conclusions
  - Major takeaways
6. Future research

# Presentation guidelines

- Text and images should be big enough to read from the back of the room

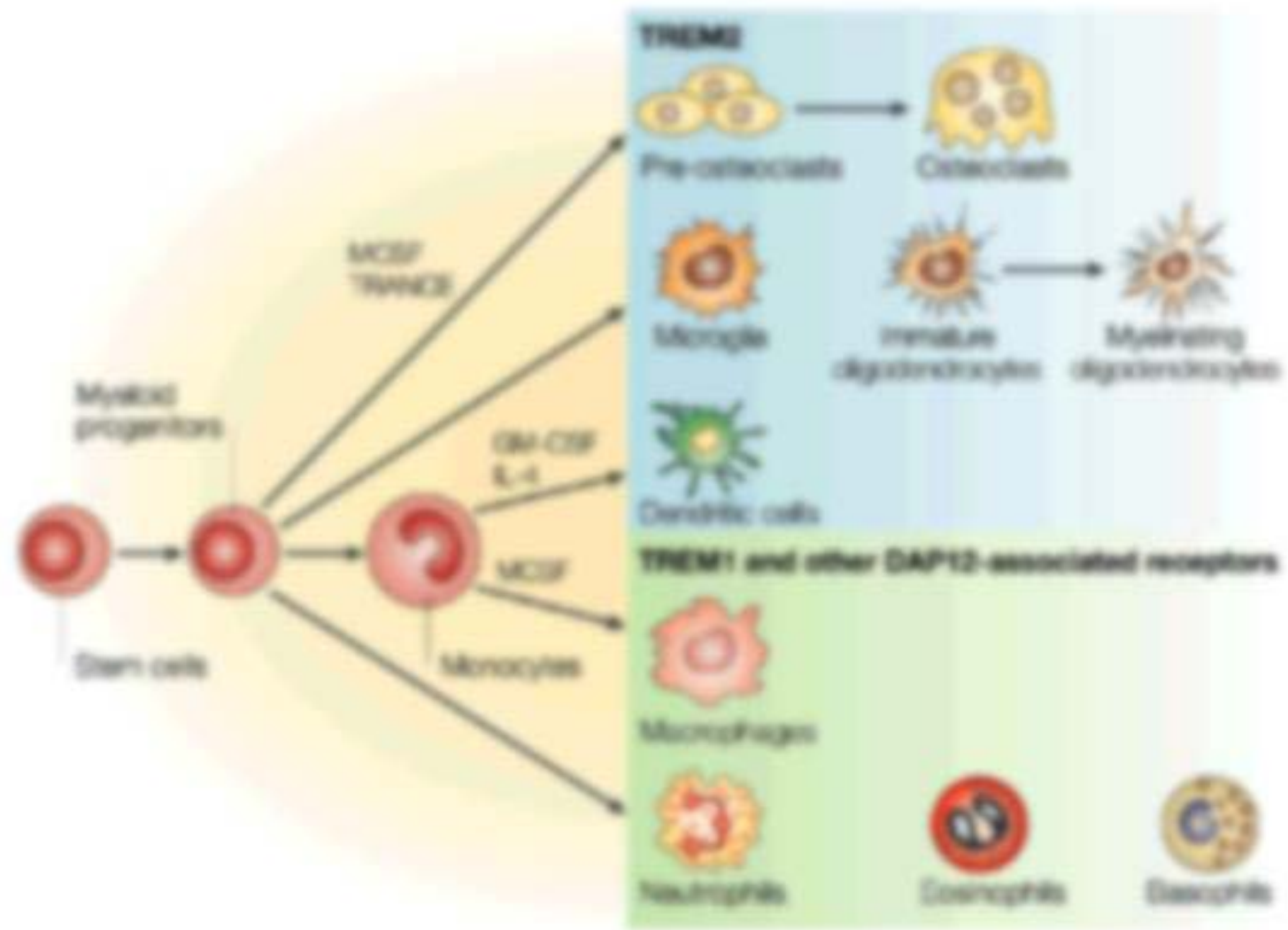


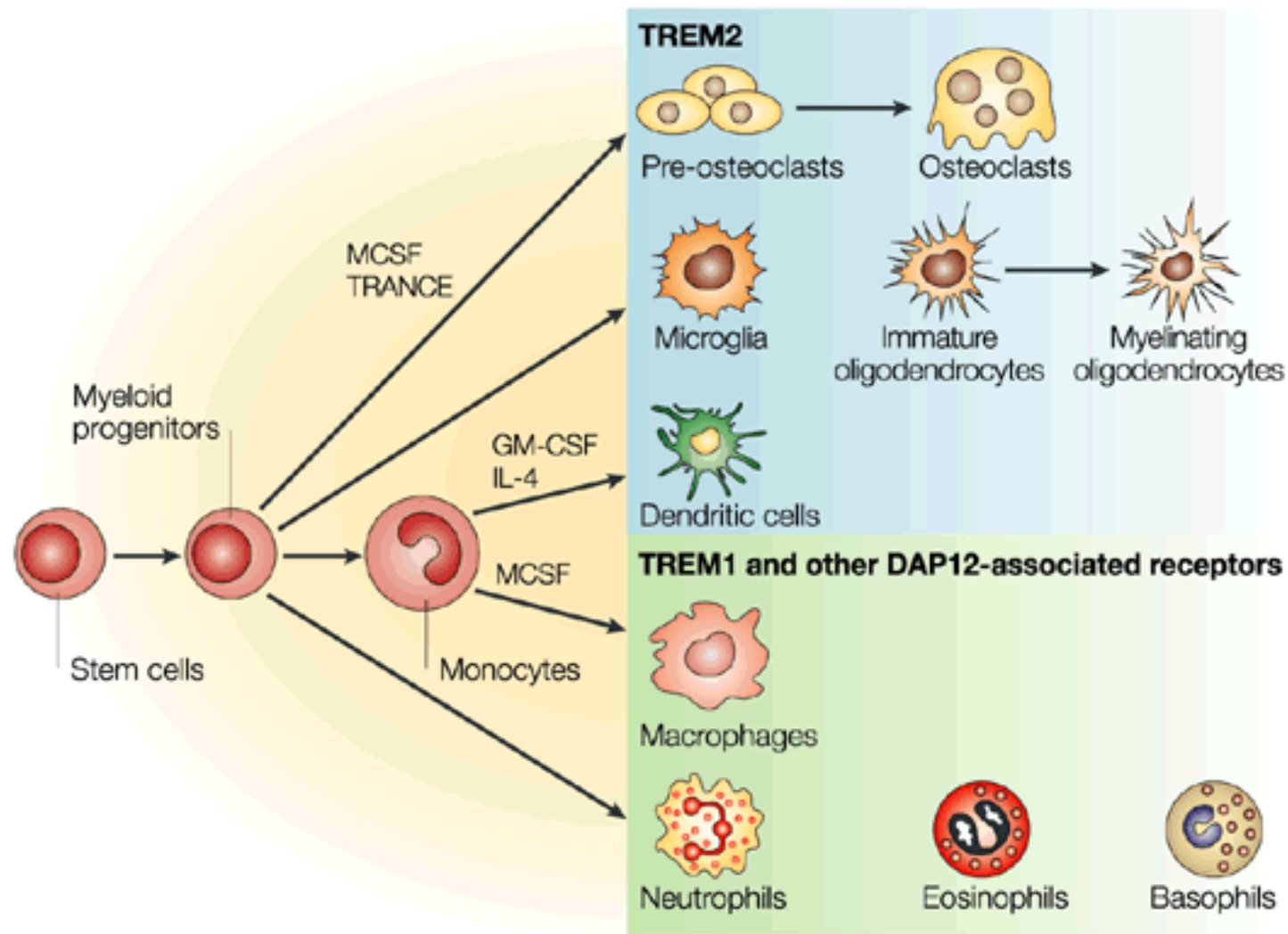




# Presentation guidelines

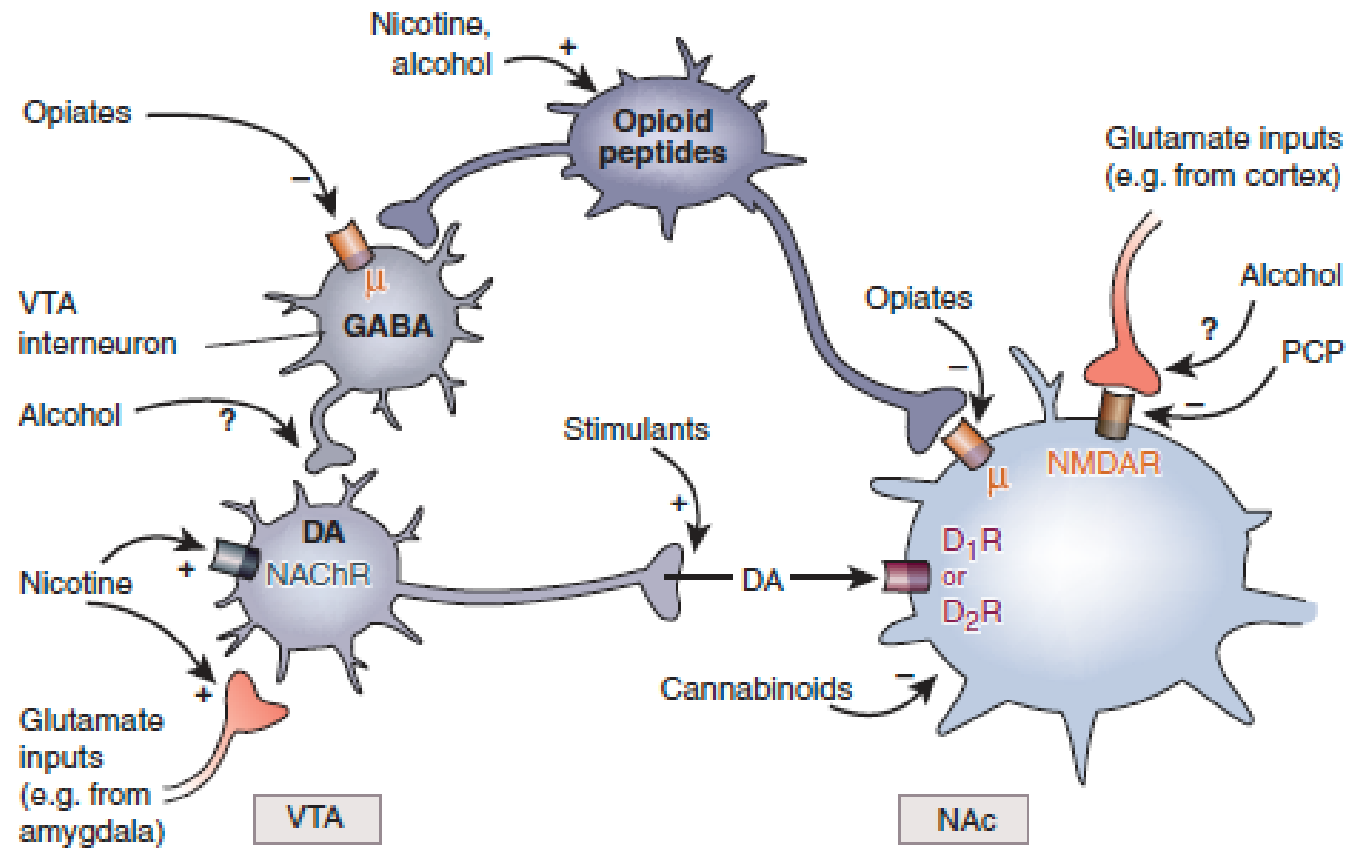
- Images should be clear

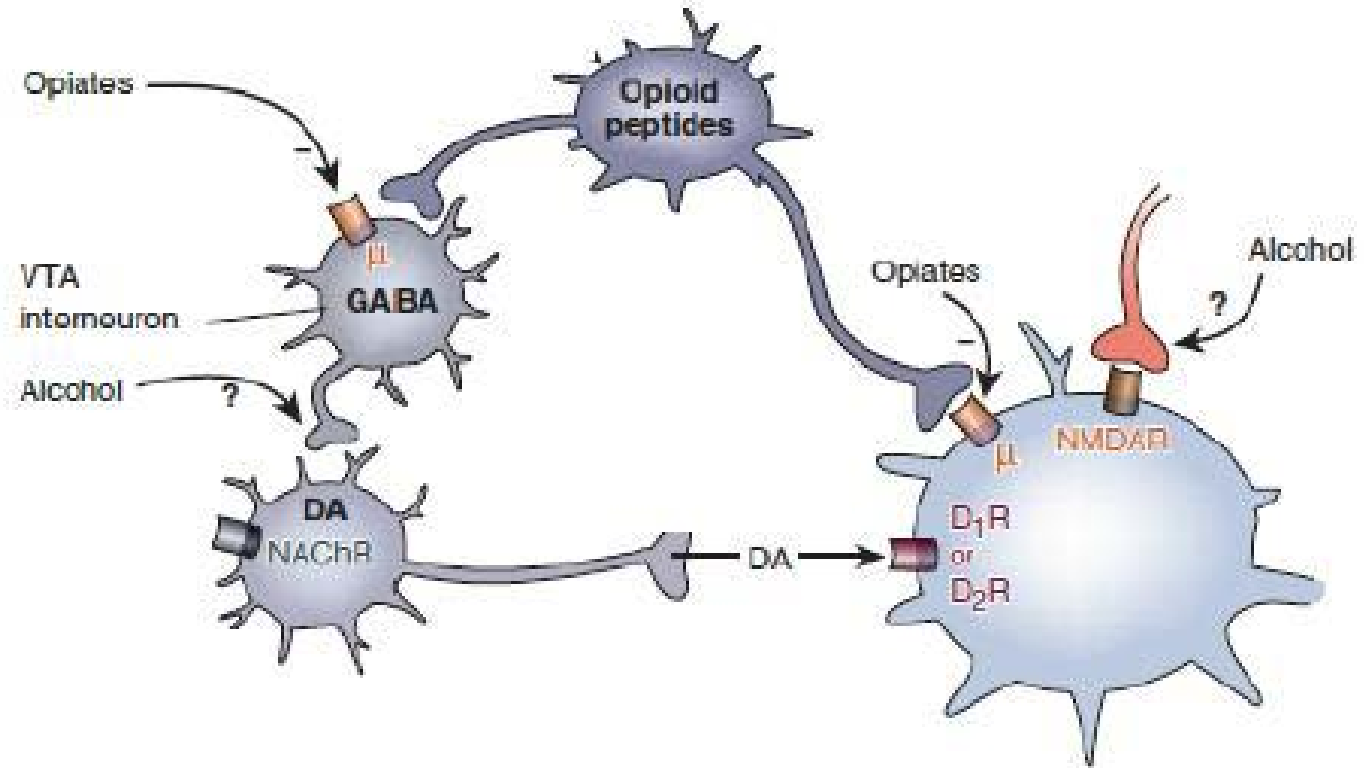




# Presentation guidelines

- Eliminate distracting details

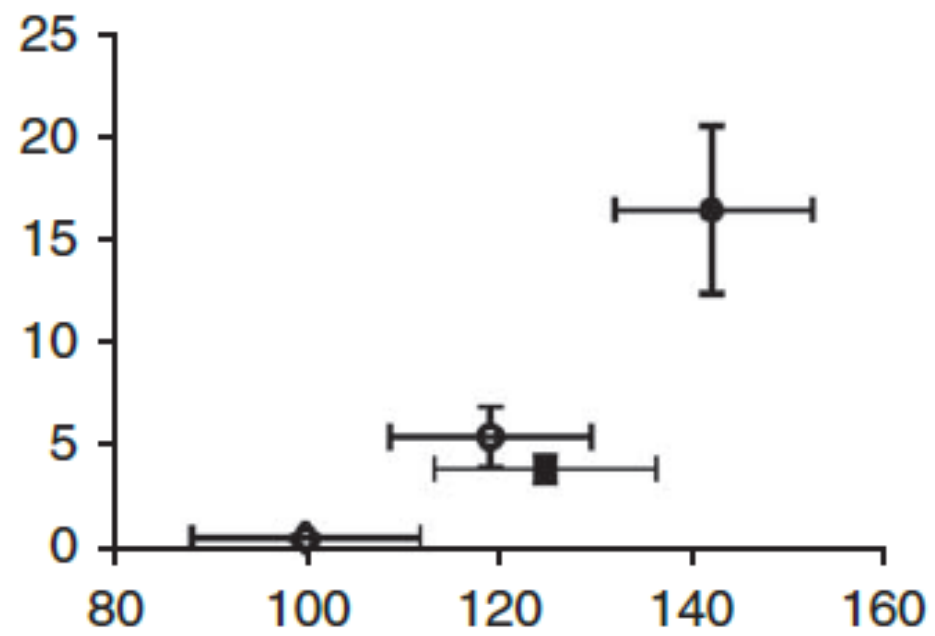


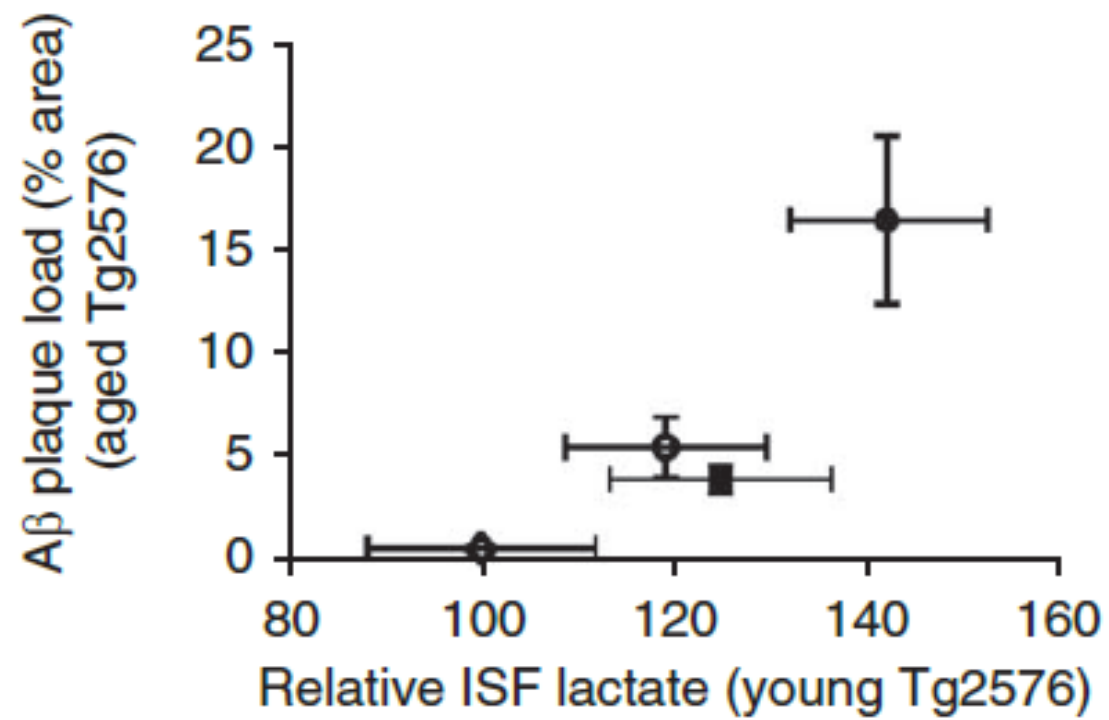


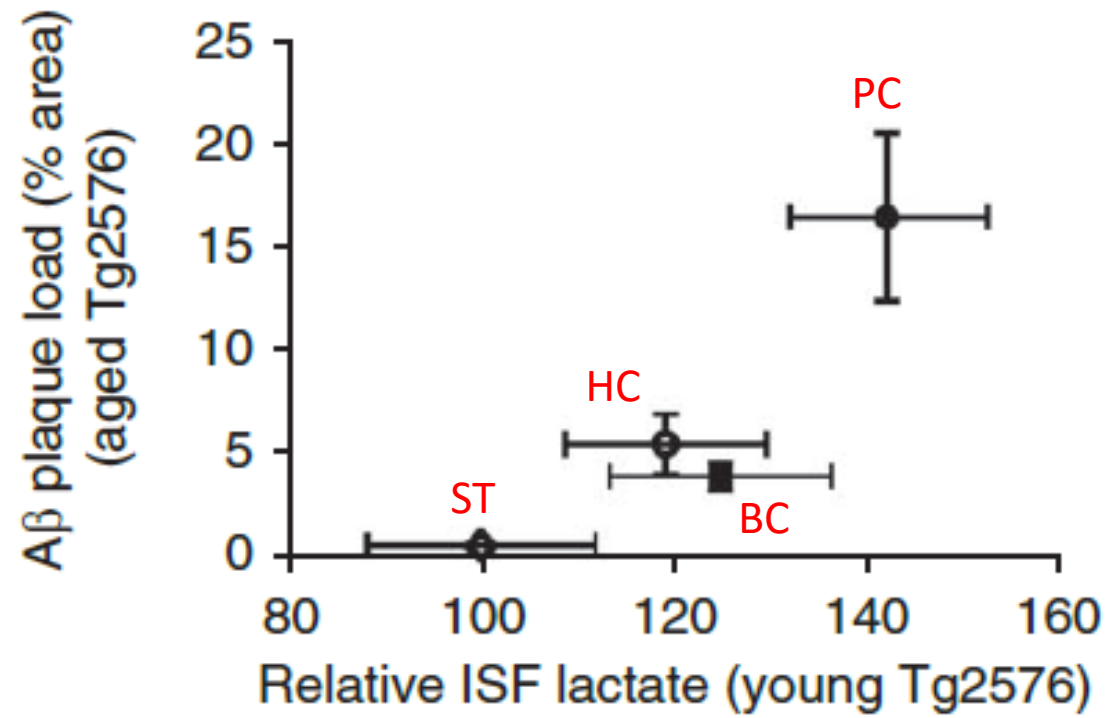
# Presentation guidelines

- Include axes and titles









# Presentation guidelines

- Minimize text
- Fully explain all figures, tables, etc. included in presentation
- Emphasize key points

# Presentation format

- PowerPoint or PDF
- **Save to USB flash drive**
- PC and projector provided in classroom

Paper assignments