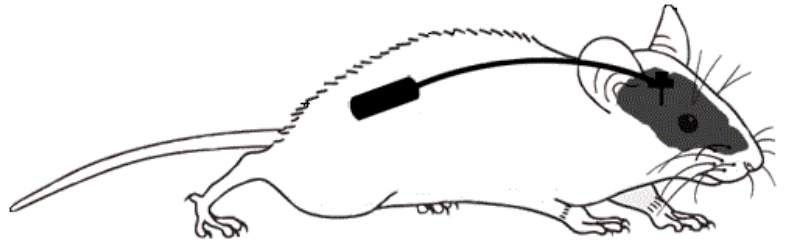


## Post Operative Care—Osmotic Pump Implantation in conjunction with Brain Stereotaxic Cannulation or Blood Vessel Cannulation.

Mild Pain Level:

Your mouse has been given Buprenorphine which will provide 8-12 hours of pain relief.



The surgery has low mortality. The main concerns are the risk of infection and effective pain management for the animal during recovery. Sterility is maintained during surgery and antibiotic cream applied to the area of surgery to minimize or eliminate infection.

**The following is the responsibility of the client and not included in procedure price.** For an additional fee, surgery core personnel will complete the following tasks and fill out the required DCM documentation (surgical record cards).

Animals should be housed separately after surgery.

### Rodent post-surgical monitoring card

Required for every surgical procedure, is the responsibility of the researcher and must be kept for 2 years.

#### *Card Instructions*

- Monitor for 8-12 hours for signs of pain and distress such as shaking, lethargy, chewing of tail, arched back, lack of grooming, etc.
- Check surgical wounds for infection.
- Mark the green card daily for 1 time point and note the date sutures are removed on the front of the card. The card must remain on the cage until the sutures are removed in 7-10 days.

Keep the card for 2 years.

## Special instructions card

Multi-purpose PI instructions to caretaker. Examples include fasting, special feed, special water, single housing, do not change cage, euthanasia, or other request as noted.

### *Card Instructions*

- House individually.

## Hazardous materials card

### **Required if infusing hazardous substances.**

### *Card Instructions*

Place the animal in a clean cage after it recovers from surgery.

DCM will not change the cage or directly handle any animals that have been exposed to hazardous materials while the red card is on the cage. They will add food or water as necessary. The experimenter is responsible for changing the cage until the card is removed 3 days after the last administration of the hazardous compound.

Once the red card is removed, change the cage and place soiled cage into an autoclave or biohazard bag. Ask your animal facility staff where they want the cage left for disinfection.