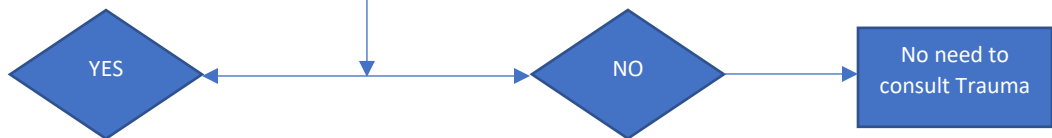


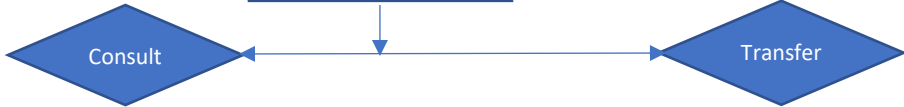
TIME CRITICAL DIAGNOSIS - TRAUMA

DAL: Is this admission related to a traumatic injury?
Ex: Fall, MVC, Fire, Assault, Blunt Trauma, Shooting etc...



No need to consult Trauma

Is this for patient transfer or consultation?



Page requested consult service
Ex: Trauma, Ortho, Neurosurgery

OSH ED

OSH Inpatient

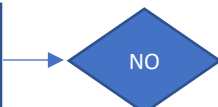
Call Trauma Attending
314-218-0089

If consult accepted as transfer to primary service (ortho, neuro etc) action completed.
If accepted to Trauma service by a consult service have Trauma attending speak with or call consult attending.
* If Brain injury contact Neurosurgery Chief Resident on call if accepted.

Is the ED on limitations?



ASK Caller: Is patient hemodynamically stable?
Is this an isolated injury? (i.e. hip fracture, spine fracture without neuro deficits)



Connect to ED com center, connect caller to ED Attending for report. Patient will be leveled by ED Attending per leveling card. Remind OSH to send films/disk & EMS pre-hospital trip sheet

Contact the Trauma Attending on call 314-218-0089 (cell) for possible direct admission.

If the ED is unable to accept the transfer patient DO NOT DECLINE until contacting the Trauma Attending 314-218-0089 – including for options including possible ICU admission

Consider patient accepted

Text page Trauma Attending and ED surgery resident on call with patient name, age, gender, injury, level, vital signs, and ETA.
*If Brain injury contact Neurosurgery Chief Resident on call.

Back-up Trauma Numbers (in order of use)
1. 314-253-2281 (page) Trauma Attending on call
2. 314-574-6920 or 314-614-0088 Dr Schuerer
3. 314-915-5079 Dr Bochicchio

Note: Individual clinical judgement supersedes all written guidelines