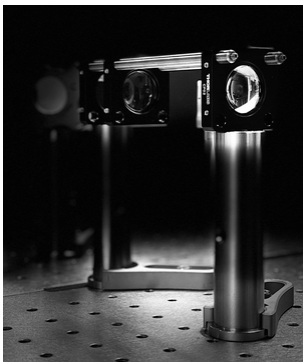
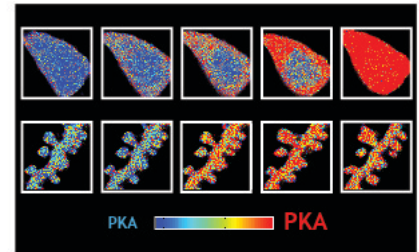




## POSTDOCTORAL POSITIONS IN NEUROSCIENCE

Yao Chen's interdisciplinary lab in the Department of Neuroscience at Washington University School of Medicine in St. Louis seeks a motivated postdoctoral scholar to join our team. We focus on uncovering principles of neuromodulator actions and mechanisms of sleep functions by illuminating the nature and functions of biochemical signaling dynamics. We use advanced techniques such as fluorescence lifetime imaging microscopy, optical sensors, light-activated actuators, electrophysiology, molecular biology, quantitative rodent behavior, and computational approaches. We aim to bridge cellular and systems neuroscience by both taking a systems biology approach to study cellular signals and studying cellular signals in the intact system in vivo. For more information on our lab and recent publications, visit <https://sites.wustl.edu/yaochenlab/>.

The PI is committed to nurturing a creative, collaborative, and supportive lab culture. Washington University neuroscience is ranked among the top 10 in the world. The School of Medicine is ranked among the top five medical schools in the United States. The applicant will have access to extensive infrastructural and core facility support and professional development training for postdoctoral researchers via the Career Center, Teaching Center, [Office of Postdoctoral Affairs](#), and the [Postdoc Society](#). Postdoctoral appointees at Washington University receive a starting salary based on the NIH NRSA guidelines and a generous [benefit package](#).



We look for highly motivated individuals who take initiatives and have a passion for science and research, who have strong problem-solving skills and ability to tinker. The candidates should have extensive expertise with optical imaging, electrophysiology, or quantitative animal behavior. Our work is interdisciplinary and will benefit from diverse perspectives, including neuroscience, molecular and cell biology, systems biology, biophysics, pharmacology, and engineering – even if your past work is not directly related to neuromodulators or sleep, you might be a great fit for the position.

Interested candidates should send the following to [yaochen@wustl.edu](mailto:yaochen@wustl.edu). 1) a cover letter explaining motivation, research experience, and interests; 2) CV; 3) the names and contact information of three references.

