

Mildred Lane Kemper Art Museum

Artworks by Chinese, Chinese-American, Japanese, and Japanese-American Artists

Chinese and Chinese-American (20th Century)	Pages 1–7
Japanese and Japanese-American (20th century)	Pages 8–11
Chinese (Ceramics, Lacquer, Works on Paper)	Pages 12–19
Japanese (Works on Paper, Sculpture, Ceramics, Lacquer, Netsuke, Swords)	Pages 20–40
Unkown maker/culture	Pages 41–43
David Mesker bequest: Japanese scroll painting and 20th c. ceramics	Pages 44–63

Chinese / Chinese-American / Active in United States



Anonymous Members of a People's Commune in Fatshan (Chinese)

The East is Red, from the series *The East is Red*, 20th century
Paper-cut, 24 x 34 3/4 in.
Gift of David A. Wilson, 1999
WU 1999.19.01



Anonymous Members of a People's Commune in Fatshan (Chinese)

The Years of Misery, from the series *The East is Red*, 20th century
Paper-cut, 24 x 34 3/4 in.
Gift of David A. Wilson, 1999
WU 1999.19.02



Anonymous Members of a People's Commune in Fatshan (Chinese)

Dawn in the East, from the series *The East is Red*, 20th century
Paper-cut, 24 x 34 3/4 in.
Gift of David A. Wilson, 1999
WU 1999.19.03



Anonymous Members of a People's Commune in Fatshan (Chinese)

Workers Peasants Soldiers Unite [sic], from the series *The East is Red*, 20th century
Paper-cut, 24 x 34 3/4 in.
Gift of David A. Wilson, 1999
WU 1999.19.04

Mildred Lane Kemper Art Museum

Artworks by Chinese, Chinese-American, Japanese, and Japanese-American Artists



Anonymous Members of a People's Commune in Fatshan (Chinese)

The Shanghai Massacre, from the series *The East is Red*,
20th century
Paper-cut, 24 x 34 3/4 in.
Gift of David A. Wilson, 1999
WU 1999.19.05



Anonymous Members of a People's Commune in Fatshan (Chinese)

Autumn Harvest Uprising, from the series *The East is Red*,
20th century
Paper-cut, 34 3/4 x 24 in.
Gift of David A. Wilson, 1999
WU 1999.19.06



Anonymous Members of a People's Commune in Fatshan (Chinese)

Revolutionary Base in the Ching kang Mountains, from the
series *The East is Red*, 20th century
Paper-cut print, 24 x 34 3/4 in.
Gift of David A. Wilson, 1999
WU 1999.19.07



Anonymous Members of a People's Commune in Fatshan (Chinese)

Land Reform, from the series *The East is Red*, 20th
century
Paper-cut print, 24 x 34 3/4 in.
Gift of David A. Wilson, 1999
WU 1999.19.08



Anonymous Members of a People's Commune in Fatshan (Chinese)

The Long March Begins, from the series *The East is Red*,
20th century
Paper-cut print, 24 x 34 3/4 in.
Gift of David A. Wilson, 1999
WU 1999.19.09

Mildred Lane Kemper Art Museum

Artworks by Chinese, Chinese-American, Japanese, and Japanese-American Artists



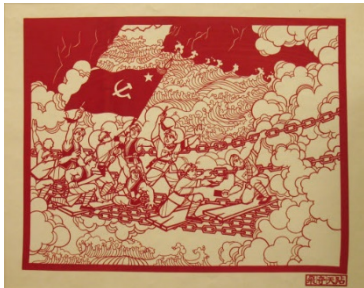
Anonymous Members of a People's Commune in Fatshan (Chinese)

Friendship with Minority Peoples, from the series *The East is Red*, 20th century

Paper-cut print, 24 x 34 3/4 in.

Gift of David A. Wilson, 1999

WU 1999.19.10



Anonymous Members of a People's Commune in Fatshan (Chinese)

Crossing the Tatu River, from the series *The East is Red*, 20th century

Paper-cut print, 24 x 34 3/4 in.

Gift of David A. Wilson, 1999

WU 1999.19.11



Anonymous Members of a People's Commune in Fatshan (Chinese)

Crossing the Great Snow Mountain, from the series *The East is Red*, 20th century

Paper-cut print, 24 x 34 3/4 in.

Gift of David A. Wilson, 1999

WU 1999.19.12



Anonymous Members of a People's Commune in Fatshan (Chinese)

Crossing the Grasslands, from the series *The East is Red*, 20th century

Paper-cut print, 24 x 34 3/4 in.

Gift of David A. Wilson, 1999

WU 1999.19.13



Anonymous Members of a People's Commune in Fatshan (Chinese)

Joining Forces in North Shensi, from the series *The East is Red*, 20th century

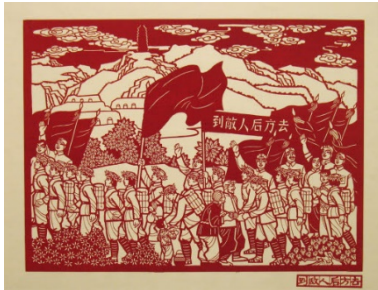
Paper-cut print, 24 x 34 3/4 in.

Gift of David A. Wilson, 1999

WU 1999.19.14

Mildred Lane Kemper Art Museum

Artworks by Chinese, Chinese-American, Japanese, and Japanese-American Artists



Anonymous Members of a People's Commune in Fatshan (Chinese)

Yenan, from the series *The East is Red*, 20th century
Paper-cut print, 24 x 34 3/4 in.
Gift of David A. Wilson, 1999
WU 1999.19.15



Anonymous Members of a People's Commune in Fatshan (Chinese)

Self Reliance, from the series *The East is Red*, 20th century
Paper-cut print, 34 3/4 x 24 in.
Gift of David A. Wilson, 1999
WU 1999.19.16



Anonymous Members of a People's Commune in Fatshan (Chinese)

Go to the Rear of the Enemy, from the series *The East is Red*, 20th century
Paper-cut print, 24 x 34 3/4 in.
Gift of David A. Wilson, 1999
WU 1999.19.17



Anonymous Members of a People's Commune in Fatshan (Chinese)

Propaganda Work in the War of Resistance, from the series *The East is Red*, 20th century
Paper-cut print, 24 x 34 3/4 in.
Gift of David A. Wilson, 1999
WU 1999.19.18



Anonymous Members of a People's Commune in Fatshan (Chinese)

The Student Movement, from the series *The East is Red*, 20th century
Paper-cut print, 24 x 34 3/4 in.
Gift of David A. Wilson, 1999
WU 1999.19.19

Mildred Lane Kemper Art Museum

Artworks by Chinese, Chinese-American, Japanese, and Japanese-American Artists



**Anonymous Members of a People's Commune in Fatshan
(Chinese)**

Crossing the Yellow River, from the series *The East is Red*, 20th century

Paper-cut print, 24 x 34 3/4 in.

Gift of David A. Wilson, 1999

WU 1999.19.20



**Anonymous Members of a People's Commune in Fatshan
(Chinese)**

The Huai Hai Campaign, from the series *The East is Red*, 20th century

Paper-cut print, 24 x 34 3/4 in.

Gift of David A. Wilson, 1999

WU 1999.19.21



**Anonymous Members of a People's Commune in Fatshan
(Chinese)**

One More River to Cross, from the series *The East is Red*, 20th century

Paper-cut print, 24 x 34 3/4 in.

Gift of David A. Wilson, 1999

WU 1999.19.22



**Anonymous Members of a People's Commune in Fatshan
(Chinese)**

The Liberation of Nanking, from the series *The East is Red*, 20th century

Paper-cut print, 24 x 34 3/4 in.

Gift of David A. Wilson, 1999

WU 1999.19.23



**Anonymous Members of a People's Commune in Fatshan
(Chinese)**

The Chinese People Have Stood Up, from the series *The East is Red*, 20th century

Paper-cut print, 24 x 34 3/4 in.

Gift of David A. Wilson, 1999

WU 1999.19.24

Mildred Lane Kemper Art Museum

Artworks by Chinese, Chinese-American,
Japanese, and Japanese-American Artists



Unknown (Chinese)

Chairman Mao, 20th century

Cut paper, unmounted, 17 x 13 3/4 in.

Gift of David A. Wilson, 1999

WU 1999.18



H. N. Han (American, b. China, 1939)

New York Skyline, from the portfolio *City-Scapes*, 1980

Screen print, 22 x 30 in.

Gift of Dr. and Mrs. Harold J. Joseph, 1980

WU 1980.12.1 g



Ai-Wen Wu Kratz (American, b. China)

Evensong No. 3, 1971

Acrylic and charcoal on canvas, 70 7/8 x 69 3/16 in.

Gift of Arthur and Sheila Prensky, 2004

WU 2004.0020



Hung Liu (Chinese, active in United States, b. 1948)

Bonsai, 1992

Photolithograph, 22 1/2 x 30 in.

Gift of Island Press (formerly the Washington University School of Art Collaborative Print Workshop), 1993

WU 1993.12



Hung Liu (Chinese, active in United States, b. 1948)

Trademark, 1992

Photolithograph with collage, 22 1/2 x 33 in.

Gift of Island Press (formerly the Washington University School of Art Collaborative Print Workshop), 1993

WU 1993.13

Mildred Lane Kemper Art Museum

Artworks by Chinese, Chinese-American, Japanese, and Japanese-American Artists



Hung Liu (Chinese, active in United States, b. 1948)

Houseware, 1992

Lithograph, 22 1/4 x 30 1/8 in.

Gift of Island Press (formerly the Washington University
School of Art Collaborative Print Workshop), 1993

WU 1993.14



Hung Liu (Chinese, active in United States, b. 1948)

Jadespring, 1992

Lithograph, 22 5/8 x 29 5/8 in.

Gift of Island Press (formerly the Washington University
School of Art Collaborative Print Workshop), 1993

WU 1993.15



Hung Liu (Chinese, active in United States, b. 1948)

Missing Parts, 1992

Woodcut with photograph and Plexiglas on handmade
paper, 41 x 67 in.

Gift of Island Press (formerly the Washington University
School of Art Collaborative Print Workshop), 1993

WU 1993.21



Lo Ch'ing (born Lo Ch'ing-che) (Chinese, active in Taiwan, b. 1948)

Untitled, 1993

Book (unbound): lithographs, 29 15/16 x 44 5/16 in.
(open)

Gift of Island Press (formerly the Washington University
School of Art Collaborative Print Workshop), 1993

WU 1993.20



Zao Wou-Ki (French, b. China, 1921–2013)

28-10-60, 1960

Oil on canvas, 76 5/8 x 51 1/2 in.

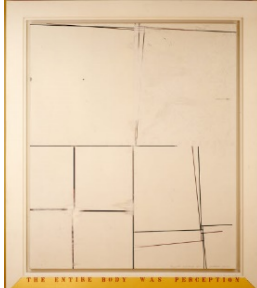
Gift of Mr. and Mrs. Adam Aronson, 1968

WU 4389

Mildred Lane Kemper Art Museum

Artworks by Chinese, Chinese-American,
Japanese, and Japanese-American Artists

Japanese / Japanese-American / Active in United States



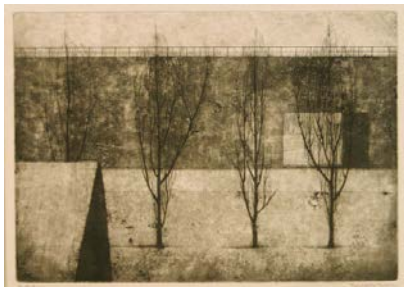
Shusaku Arakawa (Japanese, active in the United States, 1936–2010)

Beneath Untitled #2, 1985–86

Oil and acrylic on canvas, 72 x 60 in.

University purchase, Bixby Fund, 1990

WU 1990.4



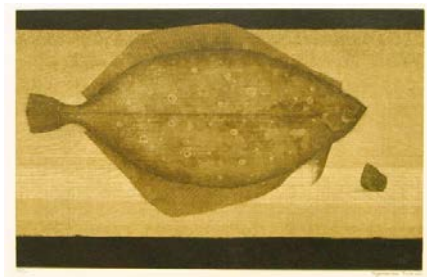
Fukui Ryonosuko (Japanese, 1923–1986)

Four Trees, n.d.

Etching with aquatint, 15 x 21 1/4 in.

University acquisition, 1986

WUx 1986.15.1



Fukui Ryonosuko (Japanese, 1923–1986)

A Flat Fish and a Seashell, n.d.

Mimeo print, 14 7/8 x 21 1/4 in.

University acquisition, 1986

WUx 1986.15.2



Fukui Ryonosuko (Japanese, 1923–1986)

Hydrangeas After Rain, n.d.

Mimeo print, 14 3/4 x 21 1/4 in.

University acquisition, 1986

WUx 1986.15.3



Fukui Ryonosuko (Japanese, 1923–1986)

Dandelions, 1963

Mimeo print, 21 1/4 x 15 in.

University acquisition, 1986

WUx 1986.15.4

Mildred Lane Kemper Art Museum

Artworks by Chinese, Chinese-American,
Japanese, and Japanese-American Artists



Fukui Ryonosuko (Japanese, 1923–1986)

Hydrangeas, n.d.

Mimeo print, 21 1/4 x 15 in.

University acquisition, 1986

WUx 1986.15.5



Fukui Ryonosuko (Japanese, 1923–1986)

Vessel, Fruit, Fish, n.d.

Mimeo print, 7 1/2 in.

University acquisition, 1986

WUx 1986.15.6



Fukui Ryonosuko (Japanese, 1923–1986)

A Tale of Plums, 1963

Mimeo print, 15 x 21 1/4 in.

University acquisition, 1987

WUx 1987.2



On Kawara (Japanese, active in the United States, 1933–2014)

100 Year Calendar, from S.M.S. No. 4, 1968

Offset print on oil cloth, 20 x 37 3/4 in.

University purchase, 1990

WU 1990.13.4 A



Yasuo Kuniyoshi (American, b. Japan, 1889–1953)

Tomorrow Will Come, 1945

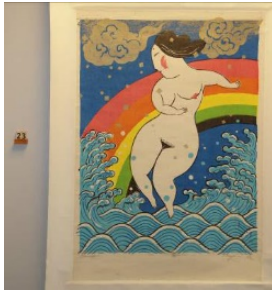
Brush and ink, 28 9/16 x 22 1/2 in.

University purchase, Kende Sale Fund, 1946

WU 3781

Mildred Lane Kemper Art Museum

Artworks by Chinese, Chinese-American, Japanese, and Japanese-American Artists



Mayumi Oda (Japanese, b. 1941)

Rainbow, prior to 1981

Woodblock print mounted on scroll, 85 x 61 cm

Bequest of David W. Mesker, 2016

146.2016



Shiko Munakata (Japanese, 1903–1975)

Print of St. Louis, 1965

Woodcut on rice paper, 16 1/4 x 12 1/2 in.

Gift of Shiko Munakata, 1965

WU 4456



Shiko Munakata (Japanese, 1903–1975)

Beethoven Chair, 1974

Woodcut on rice paper, 19 x 13 1/2 in.

Gift of Shiko Munakata, 1974

WU 4533



Yoshiko Noma (Japanese, b. 1934)

Champ XX, 1962

Etching, 26 x 19 3/4 in.

University purchase, 1962

WU 4001



Yoko Ono (American, b. Japan, 1933)

Mend Piece for John, from S.M.S. No. 5, 1968

Tube of glue with attached ribbon and 2 offset prints

University purchase, 1990

WU 1990.13.5 K

Mildred Lane Kemper Art Museum

Artworks by Chinese, Chinese-American,
Japanese, and Japanese-American Artists



Kumi Sugaï (Japanese, 1919–1996)

La rouge, 1961

Lithograph

University purchase, 1962

WU 3994



Keiichi Tahara (Japanese, b. 1951)

Fenêtre 66, No. 9, n.d.

Gelatin silver print, 16 x 12 in.

Gift of Mr. and Mrs. Joseph Tucker, 1986

WU 1986.4.3



Jirō Yoshihara (Japanese, 1905–1972)

White Line on Black, 1968

Oil on canvas, 71 1/2 x 89 5/8 in.

Gift of Mr. and Mrs. Joseph Pulitzer, Jr., 1974

WU 4528

Mildred Lane Kemper Art Museum

Artworks by Chinese, Chinese-American,
Japanese, and Japanese-American Artists

Chinese



Yung Cheng (Chinese, 1723–1735)

Bowl, 1723–35

Porcelain, 2 3/16 x 4 11/16 in.

Bequest of Charles Parsons, 1905

WU 2657



T'ung Chih Ware (Chinese, 1862–1874)

Bowl, 1862–74

Porcelain, 2 1/4 x 4 7/8 in.

Bequest of Charles Parsons, 1905

WU 2655



Tao Kuang (Chinese, 1821–1850)

Bowl, 19th century

Porcelain, 2 1/2 x 4 5/8 in.

Bequest of Charles Parsons, 1905

WU 351



Unknown (Chinese, Ch'ing Style)

Ginger Jar, n.d.

Porcelain, 8 1/2 x 8 3/16 in.

Bequest of Charles Parsons, 1905

WU 3688



K'ang K'ang Hsi (Chinese, 1662–1722)

Vase, n.d.

Porcelain, 9 1/4 x 4 7/16 in.

Bequest of Charles Parsons, 1905

WU 343

Mildred Lane Kemper Art Museum

Artworks by Chinese, Chinese-American,
Japanese, and Japanese-American Artists



K'ang K'ang Hsi (Chinese, 1662–1722)

Vase, n.d.

Porcelain, 14 5/8 x 8 1/8 in.

Bequest of Charles Parsons, 1905

WU 344



Ch'ien Lung (Chinese, 1736–1795)

Vase, 18th century

Porcelain, 10 3/4 x 6 1/8 in.

Bequest of Charles Parsons, 1905

WU 334



Ch'ien Lung (Chinese, 1736–1795)

Vase, 18th century

Porcelain, 8 x 4 5/8 in.

Bequest of Charles Parsons, 1905

WU 336



Unknown (Chinese)

Vase, n.d.

Porcelain, 10 3/8 x 4 x 6 3/8 in.

Bequest of Charles Parsons, 1905

WU 316



Unknown (Chinese)

Bowl with Cover, n.d.

Cloisonné enamel, 3 7/8 x 4 3/4 in.

Bequest of Charles Parsons, 1905

WU 2686

Mildred Lane Kemper Art Museum

Artworks by Chinese, Chinese-American, Japanese, and Japanese-American Artists



Unknown (Chinese)

Box, n.d.

Carved lacquer, 9 5/8 x 10 1/2 in.

Bequest of Charles Parsons, 1905

WU 2659



Unknown (Chinese)

Box with Cover, n.d.

Carved lacquer, 8 1/8 x 11 in.

Bequest of Charles Parsons, 1905

WU 2661



Unknown (Chinese)

Bowl and Cover, n.d.

Carved lacquer, 4 x 4 5/16 in.

Bequest of Charles Parsons, 1905

WU 2654



Unknown (Chinese)

Box, n.d.

Lacquer, 1 1/4 x 3 in.

Bequest of Charles Parsons, 1905

WU 2955



Unknown (Chinese)

Pair of bowls with covers, n.d.

Carved lacquer, brass, 4 1/2 in. each

Bequest of Charles Parsons, 1905

WU 2666 and WU 2667

Mildred Lane Kemper Art Museum

Artworks by Chinese, Chinese-American,
Japanese, and Japanese-American Artists



Unknown (Chinese, Han Dynasty)

Temple Rubbing from Wu Liang Tz'u, n.d.

Ink rubbing on paper, scroll, 1 1/4 in.

Gift of Mrs. Ingram F. Boyd, 1971

WUx 1990.12.1



Unknown (Chinese, Han Dynasty)

Temple Rubbing from Wu Liang Tz'u, n.d.

Ink rubbing on paper, scroll, 1 7/16 in.

Gift of Mrs. Ingram F. Boyd, 1971

WUx 1990.12.10



Unknown (Chinese, Han Dynasty)

Temple Rubbing from Wu Liang Tz'u, n.d.

Ink rubbing on paper, scroll, 1 1/4 in.

Gift of Mrs. Ingram F. Boyd, 1971

WUx 1990.12.11



Unknown (Chinese, Han Dynasty)

Temple Rubbing from Wu Liang Tz'u, n.d.

Ink rubbing on paper, 1 7/16 in.

Gift of Mrs. Ingram F. Boyd, 1971

WUx 1990.12.12



Unknown (Chinese, Han Dynasty)

Temple Rubbing from Wu Liang Tz'u, n.d.

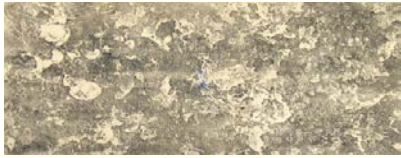
Ink rubbing on paper, 95 x 30 in.

Gift of Mrs. Ingram F. Boyd, 1971

WUx 1990.12.13

Mildred Lane Kemper Art Museum

Artworks by Chinese, Chinese-American, Japanese, and Japanese-American Artists



Unknown (Chinese, Han Dynasty)

Temple Rubbing from Wu Liang Tz'u, n.d.

Ink rubbing on paper, 1 in.

Gift of Mrs. Ingram F. Boyd, 1971

WUx 1990.12.14



Unknown (Chinese, Han Dynasty)

Temple Rubbing from Wu Liang Tz'u, n.d.

Ink rubbing on paper, 1 1/2 in.

Gift of Mrs. Ingram F. Boyd, 1971

WUx 1990.12.15



Unknown (Chinese, Han Dynasty)

Temple Rubbing from Wu Liang Tz'u, n.d.

Ink rubbing on paper, 1 1/2 in.

Gift of Mrs. Ingram F. Boyd, 1971

WUx 1990.12.16



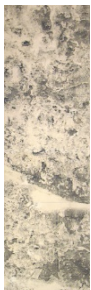
Unknown (Chinese, Han Dynasty)

Temple Rubbing from Wu Liang Tz'u, n.d.

Ink rubbing on paper, 1 1/2 in.

Gift of Mrs. Ingram F. Boyd, 1971

WUx 1990.12.17



Unknown (Chinese, Han Dynasty)

Temple Rubbing from Wu Liang Tz'u, n.d.

Ink rubbing on paper, 1 1/4 in.

Gift of Mrs. Ingram F. Boyd, 1971

WUx 1990.12.18

Mildred Lane Kemper Art Museum

Artworks by Chinese, Chinese-American,
Japanese, and Japanese-American Artists



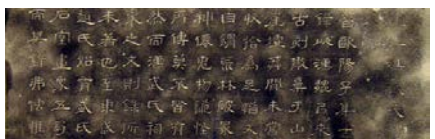
Unknown (Chinese, Han Dynasty)
Temple Rubbing from Wu Liang Tz'u, n.d.
Ink rubbing on paper, 1 1/4 in.
Gift of Mrs. Ingram F. Boyd, 1971
WUx 1990.12.19



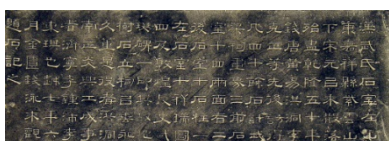
Unknown (Chinese, Han Dynasty)
Temple Rubbing from Wu Liang Tz'u, n.d.
Ink rubbing on paper, 1 1/4 in.
Gift of Mrs. Ingram F. Boyd, 1971
WUx 1990.12.2



Unknown (Chinese, Han Dynasty)
Temple Rubbing from Wu Liang Tz'u, n.d.
Ink rubbing on paper, 1 1/2 in.
Gift of Mrs. Ingram F. Boyd, 1971
WUx 1990.12.20



Unknown (Chinese, Han Dynasty)
Temple Rubbing from Wu Liang Tz'u, n.d.
Ink rubbing on paper, 1 1/2 in.
Gift of Mrs. Ingram F. Boyd, 1971
WUx 1990.12.21



Unknown (Chinese, Han Dynasty)
Temple Rubbing from Wu Liang Tz'u, n.d.
Ink rubbing on paper, 1 in.
Gift of Mrs. Ingram F. Boyd, 1971
WUx 1990.12.22

Mildred Lane Kemper Art Museum

Artworks by Chinese, Chinese-American, Japanese, and Japanese-American Artists



Unknown (Chinese, Han Dynasty)

Temple Rubbing from Wu Liang Tz'u, n.d.

Ink rubbing on paper, 56 1/4 x 43 in.

Gift of Mrs. Ingram F. Boyd, 1971

WUx 1990.12.23



Unknown (Chinese, Han Dynasty)

Temple Rubbing from Wu Liang Tz'u, n.d.

Ink rubbing on paper, 54 1/4 x 45 3/4 in.

Gift of Mrs. Ingram F. Boyd, 1971

WUx 1990.12.24



Unknown (Chinese, Han Dynasty)

Temple Rubbing from Wu Liang Tz'u, n.d.

Ink rubbing on paper, 84 3/8 x 46 1/8 in.

Gift of Mrs. Ingram F. Boyd, 1971

WUx 1990.12.25



Unknown (Chinese, Han Dynasty)

Temple Rubbing from Wu Liang Tz'u, n.d.

Ink rubbing on paper, 84 x 31 3/4 in.

Gift of Mrs. Ingram F. Boyd, 1971

WUx 1990.12.26



Unknown (Chinese, Han Dynasty)

Temple Rubbing from Wu Liang Tz'u, n.d.

Ink rubbing on paper, 1 1/2 in.

Gift of Mrs. Ingram F. Boyd, 1971

WUx 1990.12.3

Mildred Lane Kemper Art Museum

Artworks by Chinese, Chinese-American, Japanese, and Japanese-American Artists



Unknown (Chinese, Han Dynasty)

Temple Rubbing from Wu Liang Tz'u, n.d.

Ink rubbing on paper, 1 in.

Gift of Mrs. Ingram F. Boyd, 1971

WUx 1990.12.4



Unknown (Chinese, Han Dynasty)

Temple Rubbing from Wu Liang Tz'u, n.d.

Ink rubbing on paper, 1 1/4 in.

Gift of Mrs. Ingram F. Boyd, 1971

WUx 1990.12.5



Unknown (Chinese, Han Dynasty)

Temple Rubbing from Wu Liang Tz'u, n.d.

Ink rubbing on paper, 1 1/2 in.

Gift of Mrs. Ingram F. Boyd, 1971

WUx 1990.12.6



Unknown (Chinese, Han Dynasty)

Temple Rubbing from Wu Liang Tz'u, n.d.

Ink rubbing on paper

Gift of Mrs. Ingram F. Boyd, 1971

WUx 1990.12.7



Unknown (Chinese, Han Dynasty)

Temple Rubbing from Wu Liang Tz'u, n.d.

Ink rubbing on paper, 1 1/2 in.

Gift of Mrs. Ingram F. Boyd, 1971

WUx 1990.12.9



Unknown (Chinese, Han Dynasty)

Temple Rubbing from Wu Liang Tz'u, n.d.

Ink rubbing on paper, 1 1/4 in.

Gift of Mrs. Ingram F. Boyd, 1971

WUx 1990.12.8

Mildred Lane Kemper Art Museum

Artworks by Chinese, Chinese-American,
Japanese, and Japanese-American Artists

Japanese



Utagawa Ichiryusai Hiroshige (Japanese, 1797–1858)
Kanagawa, dai no kei (*Kanagawa: View of the Embankment*), no. 4 from the series *Tokaido gojusan tsugi no uchi* (*Fifty-three Stations of the Tokaido Road*), also known as the *Hoeido Tokaido*, 1833–34
Woodblock print, 9 1/8 x 13 1/2 in.
Gift of Halsey C. Ives
WU 2236



Utagawa Ichiryusai Hiroshige (Japanese, 1797–1858)
Goyu, tabibito tomeru onna (*Goyu: Women Stopping Travelers*), no. 36 from the series *Tokaido gojusan tsugi no uchi* (*Fifty-three stations of the Tokaido Road*), also known as the *Hoeido Tokaido*, 1833–34
Woodblock print, 9 1/16 x 13 5/8 in.
University acquisition
WU 2235



Utagawa Ichiryusai Hiroshige (Japanese, 1797–1858)
Hara, no. 14 from the series *Tokaido gojusan tsugi* (*Fifty-three Stations of the Tokaido Road*), also known as the *Kyoka Tokaido*, 1840–42
Woodblock print, 6 1/4 x 8 1/4 in.
Gift of Halsey C. Ives
WU 2234



Utagawa Ichiryusai Hiroshige (Japanese, 1797–1858)
Kameyama, no. 47 from the series *Tokaido gojusan tsugi* (*Fifty-three Stations of the Tokaido Road*), also known as the *Kyoka Tokaido*, 1840–42
Woodblock print, 5 15/16 x 8 5/16 in.
Gift of Halsey C. Ives
WU 2228

Mildred Lane Kemper Art Museum

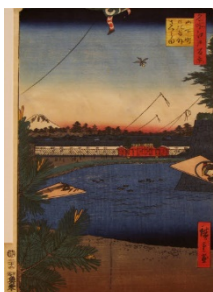
Artworks by Chinese, Chinese-American, Japanese, and Japanese-American Artists



Utagawa Ichiryusai Hiroshige (Japanese, 1797–1858)
Arashiyama manka (*Cherry Blossoms in Full Bloom at Arashiyama*), from the series *Kyoto meisho no uchi* (*Famous Places in Kyoto*), c. 1834
Woodblock print, 8 5/8 x 14 in.
Gift of Halsey C. Ives
WU 2229



Keisai Eisen (Japanese 1790–1848)
Utagawa Ichiryusai Hiroshige (Japanese, 1797–1858)
Yabuhara, Torii toge suzuri no shimizu (*Yabuhara: The Ink-stone Spring at Torii Pass*), no. 36 from *Kisokaido rokujukyu tsugi no uchi* (*The Sixty-Nine Stations of the Kisokaido Road*), 1834–42
Woodblock print, 8 9/16 x 13 9/16 in.
Gift of Halsey C. Ives
WU 2230



Utagawa Ichiryusai Hiroshige (Japanese, 1797–1858)
Hibiya and Soto-Sakurada from Yamashita-cho, no. 3 from the series *One Hundred Famous Views of Edo*, 1857
Woodblock print, 14 1/4 x 9 1/2 in.
Gift of Edythe Polster, 1989
WU 1989.1



Utagawa Ichiryusai Hiroshige (Japanese, 1797–1858)
Two Figures by a Stream, 19th century
Woodblock print, 13 x 9 in.
Gift of Halsey C. Ives
WU 2232



Kikumaro (Japanese, d. 1829)
Vase and Flowers Surimono, 19th century
Woodblock print, 8 15/16 x 6 1/4 in.
Gift of Halsey C. Ives
WU 2237

Mildred Lane Kemper Art Museum

Artworks by Chinese, Chinese-American,
Japanese, and Japanese-American Artists



Kikumaro (Japanese, d. 1829)

Vase, Flowers, Scissors Surimono, 19th century

Woodblock print, 9 x 6 1/4 in.

Gift of Halsey C. Ives

WU 2238



Kikumaro (Japanese, d. 1829)

Two Girls, Half-Length, Under Umbrella, 19th century

Woodblock print, 11 13/16 x 6 in.

Gift of Halsey C. Ives

WU 2239



Utagawa Kunisada (Japanese, 1787–1865)

Girls on a Pleasure Boat, 19th century

Woodblock print, 14 13/16 x 10 in.

Gift of Halsey C. Ives

WU 2240



Utagawa Kunisada (Japanese, 1787–1865)

Girls on a Pleasure Boat, 19th century

Woodblock print, 14 15/16 x 10 1/8 in.

Gift of Halsey C. Ives

WU 2241



Kunitsuna (Japanese)

Untitled (Woman), 19th century

Woodblock print, 14 1/2 x 10 1/4 in.

Gift of Halsey C. Ives

WU 2961

Mildred Lane Kemper Art Museum

Artworks by Chinese, Chinese-American, Japanese, and Japanese-American Artists



Kikugawa Eisan (Japanese, 1790–1848)

Girl with Chrysanthemum, 19th century

Woodblock print, 14 1/2 x 6 11/16 in.

Gift of Halsey C. Ives

WU 2246



Kikugawa Eisan (Japanese, 1790–1848)

Girl in Yellow with Umbrella, 19th century

Woodblock print, 15 x 10 3/8 in.

Gift of Halsey C. Ives

WU 2247



Kikugawa Eisan (Japanese, 1790–1848)

Girl Sitting on Bench, 19th century

Woodblock print, 15 3/8 x 10 3/4 in.

Gift of Halsey C. Ives

WU 2960



Yosheiku (Japanese)

Woman and Boy Playing with a Dog, 19th century

Woodblock print, 13 3/4 x 8 7/8 in.

Gift of Halsey C. Ives

WU 2962



Unknown (Japanese)

Screen with 6 Panels, n.d.

Gold leaf and lacquer, 67 1/8 x 153 x 11/16 in.

Gift of Morris Moscovitz, 1985

WU 1985.12

Mildred Lane Kemper Art Museum

Artworks by Chinese, Chinese-American, Japanese, and Japanese-American Artists



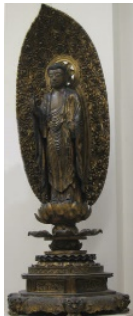
Kamakura Period (Japanese, 1192–1333)

Sakyamuni Buddha, 13th century

Wood, 12 3/4 x 3 5/8 x 2 1/2 in.

Gift of Mrs. William McChesney Martin, Jr., 1969

WU 0-12



Unknown (Japanese)

Buddha, 1468

Painted and gilded wood

Bequest of Charles Parsons, 1905

WU 2946



Unknown (Japanese, Meiji period)

Kutani ware plate, n.d.

Porcelain, 2 x 12 1/8 in.

Bequest of Charles Parsons, 1905

WU 248



Unknown (Japanese, Meiji period)

Kutani ware jar with cover, n.d.

Porcelain, 9 3/4 in.

Bequest of Charles Parsons, 1905

WU 250



Unknown (Japanese)

Vase, n.d.

Porcelain, 7 5/8 x 4 7/8 in.

Bequest of Charles Parsons, 1905

WU 315

Mildred Lane Kemper Art Museum

Artworks by Chinese, Chinese-American,
Japanese, and Japanese-American Artists



Makuzu Kozan Ware (Japanese)
Vase, n.d.
Porcelain, 8 1/2 x 3 9/16 in.
Bequest of Charles Parsons, 1905
WU 1040



Makuzu Kozan Ware (Japanese)
Vase, n.d.
Porcelain, 6 7/8 x 3 7/8 in.
Bequest of Charles Parsons, 1905
WU 1042



Makuzu Kozan Ware (Japanese)
Vase, n.d.
Porcelain, 8 x 4 11/16 in.
Bequest of Charles Parsons, 1905
WU 1044



Makuzu Kozan Ware (Japanese)
Vase, n.d.
Porcelain, 7 5/16 x 4 3/8 in.
Bequest of Charles Parsons, 1905
WU 1045



Makuzu Kozan Ware (Japanese)
Vase, n.d.
Porcelain, 11 1/4 x 6 9/16 in.
Bequest of Charles Parsons, 1905
WU 243

Mildred Lane Kemper Art Museum

Artworks by Chinese, Chinese-American,
Japanese, and Japanese-American Artists



Makuzu Kozan Ware (Japanese)
Vase, n.d.
Porcelain, 5 3/4 x 4 7/8 in.
Bequest of Charles Parsons, 1905
WU 242



Makuzu Kozan Ware (Japanese)
Vase, n.d.
Porcelain, 8 3/4 x 3 15/16 in.
Bequest of Charles Parsons, 1905
WU 1047



Makuzu Kozan Ware (Japanese)
Bowl with Lid, n.d.
Porcelain, 7 x 8 1/4 in.
Bequest of Charles Parsons, 1905
WU 245



Makuzu Kozan Ware (Japanese)
Vase, n.d.
Porcelain, 8 3/4 x 8 in.
Bequest of Charles Parsons, 1905
WU 247



Old Kyoto Ware (Japanese)
Bowl, n.d.
Porcelain, 5 1/4 x 6 1/4 in.
Bequest of Charles Parsons, 1905
WU 1055

Mildred Lane Kemper Art Museum

Artworks by Chinese, Chinese-American, Japanese, and Japanese-American Artists



Yabu Meizan (Japanese, 1853–1934)

Satsuma ware bowl, n.d.

Porcelain, 2 7/8 x 4 7/8 in.

Bequest of Charles Parsons, 1905

WU 1058



Yabu Meizan (Japanese, 1853–1934)

Satsuma ware incense burner, n.d.

Porcelain and bronze, 6 1/2 x 5 7/8 in.

Bequest of Charles Parsons, 1905

WU 99



Unknown (Japanese)

Sugar bowl, n.d.

Sterling silver, 4 3/4 x 4 3/4 x 3 1/2 in.

Bequest of Charles Parsons, 1905

WU 1540



Unknown (Japanese)

Five-tier stacking box with masks, n.d.

Black and gold lacquer, 7 1/4 x 10 1/4 x 7 7/8 in.

Bequest of Charles Parsons, 1905

WU 3763



Unknown (Japanese)

Writing Box, n.d.

Gold lacquer, 9 5/16 x 8 9/16 x 1 3/4 in.

Bequest of Charles Parsons, 1905

WU 2928

Mildred Lane Kemper Art Museum

Artworks by Chinese, Chinese-American, Japanese, and Japanese-American Artists



Unknown (Japanese)

Box, n.d.

Lacquer, 3 7/8 x 9 5/8 in.

Bequest of Charles Parsons, 1905

WU 2922



Unknown (Japanese)

Box, n.d.

Gold lacquer, 3 3/8 x 15 1/4 x 11 1/8 in.

Bequest of Charles Parsons, 1905

WU 2923



Unknown (Japanese)

Box, n.d.

Gold lacquer, 3 3/4 x 7 5/16 x 6 in.

Bequest of Charles Parsons, 1905

WU 2924



Tomita (Japanese)

Writing Box, n.d.

Gold and silver lacquer, 2 x 9 5/8 x 8 1/2 in.

Bequest of Charles Parsons, 1905

WU 2958



Tomita (Japanese)

Box, n.d.

Gold lacquer, 5 1/16 x 15 1/2 x 12 in.

Bequest of Charles Parsons, 1905

WU 2959

Mildred Lane Kemper Art Museum

Artworks by Chinese, Chinese-American, Japanese, and Japanese-American Artists



Unknown (Japanese)

Writing Box, n.d.

Gold lacquer, 7 1/4 x 10 3/4 x 8 3/8 in.

Bequest of Charles Parsons, 1905

WU 2957



Unknown (Japanese)

Box (one of a pair), n.d.

Gold lacquer

Bequest of Charles Parsons, 1905

WU 472 a



Unknown (Japanese)

Box (one of a pair), n.d.

Gold lacquer

Bequest of Charles Parsons, 1905

WU 472 b



Unknown (Japanese)

Pocket Shrine, modern

Gold lacquer, 7/8 x 2 3/8 in.

Bequest of Charles Parsons, 1905

WU 2956



Unknown (Japanese)

Screen, n.d.

Gold lacquer, 5 3/4 x 3 1/2 x 1/2 in.

Bequest of Charles Parsons, 1905

WU 2926

Mildred Lane Kemper Art Museum

Artworks by Chinese, Chinese-American,
Japanese, and Japanese-American Artists



Unknown (Japanese)

Inrō, n.d.

Lacquer, 3 5/8 x 2 x 1 in.

Bequest of Charles Parsons, 1905

WU 3051



Unknown (Japanese)

Inrō, n.d.

Lacquer, 3 7/16 x 1 5/16 x 1 3/4 in.

Bequest of Charles Parsons, 1905

WU 3052



Unknown (Japanese)

Four-case Inrō, n.d.

Lacquer, 3 1/4 x 1/2 x 2 1/4 in.

Bequest of Charles Parsons, 1905

WU 3053



Unknown (Japanese)

Netsuke, n.d.

Carved ivory, 1 11/16 x 1 5/16 x 1 in.

Bequest of Charles Parsons, 1905

WU 1106



Unknown (Japanese)

Netsuke, n.d.

Carved ivory, 1 3/16 x 1 5/8 x 1 1/4 in.

Bequest of Charles Parsons, 1905

WU 1108

Mildred Lane Kemper Art Museum

Artworks by Chinese, Chinese-American,
Japanese, and Japanese-American Artists



Unknown (Japanese)

Netsuke, n.d.

Carved ivory, 1 7/16 x 1 1/4 x 1 1/8 in.

Bequest of Charles Parsons, 1905

WU 1109



Unknown (Japanese)

Netsuke, n.d.

Carved ivory, 2 9/16 x 1 1/4 x 1 3/8 in.

Bequest of Charles Parsons, 1905

WU 1110



Unknown (Japanese)

Netsuke, n.d.

Carved ivory, 2 1/16 x 2 3/8 x 2 1/16 in.

Bequest of Charles Parsons, 1905

WU 1111



Unknown (Japanese)

Netsuke, n.d.

Carved ivory, 1 1/8 x 1 1/4 x 1 9/16 in.

Bequest of Charles Parsons, 1905

WU 1112



Unknown (Japanese)

Netsuke, n.d.

Carved ivory, 1/2 x 1 7/16 in.

Bequest of Charles Parsons, 1905

WU 1113

Mildred Lane Kemper Art Museum

Artworks by Chinese, Chinese-American,
Japanese, and Japanese-American Artists



Unknown (Japanese)

Netsuke, n.d.

Carved ivory, 1 11/16 x 1 9/16 x 1 1/4 in.

Bequest of Charles Parsons, 1905

WU 1114



Unknown (Japanese)

Netsuke, n.d.

Carved ivory, 1 1/2 x 1 1/4 x 1 5/8 in.

Bequest of Charles Parsons, 1905

WU 1115



Unknown (Japanese)

Netsuke, n.d.

Carved ivory, 15/16 x 1 3/8 x 1 1/16 in.

Bequest of Charles Parsons, 1905

WU 1116



Unknown (Japanese)

Netsuke, n.d.

Carved ivory, 3 1/16 x 1 1/16 x 11/16 in.

Bequest of Charles Parsons, 1905

WU 1119



Unknown (Japanese)

Netsuke, n.d.

Carved ivory, 1 x 1 3/16 x 13/16 in.

Bequest of Charles Parsons, 1905

WU 1120

Mildred Lane Kemper Art Museum

Artworks by Chinese, Chinese-American,
Japanese, and Japanese-American Artists



Unknown (Japanese)

Netsuke, n.d.

Carved ivory, 1 1/4 x 2 1/8 x 1 1/2 in.

Bequest of Charles Parsons, 1905

WU 1121



Unknown (Japanese)

Netsuke, n.d.

Carved ivory, 1 1/4 x 1 1/2 x 1 1/16 in.

Bequest of Charles Parsons, 1905

WU 1122



Unknown (Japanese)

Netsuke, n.d.

Carved ivory, 1 9/16 x 1 7/16 x 1 13/16 in.

Bequest of Charles Parsons, 1905

WU 1123



Unknown (Japanese)

Netsuke, n.d.

Carved ivory, 1 1/4 x 1 15/16 x 1 in.

Bequest of Charles Parsons, 1905

WU 1126



Unknown (Japanese)

Netsuke, n.d.

Carved ivory, 1 5/16 x 1 3/4 x 1 3/8 in.

Bequest of Charles Parsons, 1905

WU 1128

Mildred Lane Kemper Art Museum

Artworks by Chinese, Chinese-American,
Japanese, and Japanese-American Artists



Unknown (Japanese)

Netsuke, n.d.

Carved ivory, 5/8 x 1 7/16 in.

Bequest of Charles Parsons, 1905

WU 1129



Unknown (Japanese)

Netsuke, n.d.

Carved ivory, 1 1/4 x 1 x 1 in.

Bequest of Charles Parsons, 1905

WU 1130



Unknown (Japanese)

Netsuke, n.d.

Carved ivory, 2 5/16 x 1 7/16 x 7/8 in.

Bequest of Charles Parsons, 1905

WU 1131



Unknown (Japanese)

Netsuke, n.d.

Carved ivory, 2 1/2 x 2 3/8 x 1 7/8 in.

Bequest of Charles Parsons, 1905

WU 1132



Unknown (Japanese)

Netsuke, n.d.

Carved ivory, 2 7/16 x 3 3/8 x 1 1/16 in.

Bequest of Charles Parsons, 1905

WU 1133

Mildred Lane Kemper Art Museum

Artworks by Chinese, Chinese-American,
Japanese, and Japanese-American Artists



Unknown (Japanese)

Netsuke, n.d.

Carved ivory, 2 11/16 x 2 x 1 7/8 in.

Bequest of Charles Parsons, 1905

WU 1134



Unknown (Japanese)

Netsuke, n.d.

Carved ivory, 2 1/4 x 1 7/8 x 1 1/4 in.

Bequest of Charles Parsons, 1905

WU 1135



Unknown (Japanese)

Netsuke, n.d.

Carved ivory, 2 1/2 x 1 1/2 x 1 1/4 in.

Bequest of Charles Parsons, 1905

WU 1136



Unknown (Japanese)

Netsuke, n.d.

Carved ivory, 2 13/16 x 2 x 1 3/4 in.

Bequest of Charles Parsons, 1905

WU 1137



Unknown (Japanese)

Netsuke, n.d.

Carved ivory, 2 5/8 x 3 1/2 x 1 15/16 in.

Bequest of Charles Parsons, 1905

WU 1138

Mildred Lane Kemper Art Museum

Artworks by Chinese, Chinese-American,
Japanese, and Japanese-American Artists



Unknown (Japanese)

Netsuke, n.d.

Carved ivory, 2 3/8 x 2 3/4 x 1 13/16 in.

Bequest of Charles Parsons, 1905

WU 1139



Unknown (Japanese)

Netsuke, n.d.

Carved ivory, 2 1/4 x 2 x 1 5/16 in.

Bequest of Charles Parsons, 1905

WU 1142



Unknown (Japanese)

Netsuke, n.d.

Carved ivory, 1 3/8 x 1 1/2 x 13/16 in.

Bequest of Charles Parsons, 1905

WU 1143



Unknown (Japanese)

Netsuke, n.d.

Carved ivory, 1 15/16 x 1 11/16 x 1 3/16 in.

Bequest of Charles Parsons, 1905

WU 1144



Unknown (Japanese)

Okimono, n.d.

Carved ivory, 2 7/8 x 1 3/4 x 1 1/4 in.

Bequest of Charles Parsons, 1905

WU 1124

Mildred Lane Kemper Art Museum

Artworks by Chinese, Chinese-American,
Japanese, and Japanese-American Artists



Unknown (Japanese)

Okimono, n.d.

Carved ivory, 2 13/16 x 1 5/8 x 1 in.

Bequest of Charles Parsons, 1905

WU 1125



Unknown (Japanese)

Okimono, n.d.

Carved ivory, 8 1/4 x 5 x 3 1/4 in.

Bequest of Charles Parsons, 1905

WU 1145



Unknown (Japanese)

Okimono, n.d.

Carved ivory, 4 1/8 x 3 7/16 x 1 5/8 in.

Bequest of Charles Parsons, 1905

WU 1147 a-c



Unknown (Japanese)

Okimono, n.d.

Carved ivory, 6 x 2 1/4 x 1 13/16 in.

Bequest of Charles Parsons, 1905

WU 1148



Unknown (Japanese)

Okimono, n.d.

Carved ivory, 5 3/4 x 2 5/8 x 1 3/4 in.

Bequest of Charles Parsons, 1905

WU 1149

Mildred Lane Kemper Art Museum

Artworks by Chinese, Chinese-American,
Japanese, and Japanese-American Artists



Unknown (Japanese)

Okimono, n.d.

Carved ivory, 7 x 2 7/8 x 1 3/8 in.

Bequest of Charles Parsons, 1905

WU 1150



Unknown (Japanese)

Okimono, n.d.

Carved ivory, 5 3/4 x 3 7/8 x 2 in.

Bequest of Charles Parsons, 1905

WU 1151a-c



Unknown (Japanese)

Okimono, n.d.

Carved ivory, 5 1/2 x 3 1/4 x 2 5/16 in.

Bequest of Charles Parsons, 1905

WU 1152a-e



Unknown (Japanese)

Okimono, n.d.

Carved ivory, 3 7/8 x 3 3/4 x 3 3/8 in.

Bequest of Charles Parsons, 1905

WU 1153



Unknown (Japanese)

Okimono, n.d.

Carved ivory, 3 x 1 3/8 x 1 in.

Bequest of Charles Parsons, 1905

WU 1154

Mildred Lane Kemper Art Museum

Artworks by Chinese, Chinese-American,
Japanese, and Japanese-American Artists



Unknown (Japanese)

Okimono, n.d.

Carved ivory, 8 3/4 x 4 x 3 3/4 in.

Bequest of Charles Parsons, 1905

WU 1155



Unknown (Japanese)

Okimono, n.d.

Carved ivory, 4 11/16 x 2 x 1 7/8 in.

Bequest of Charles Parsons, 1905

WU 1156



Unknown (Japanese)

Okimono, n.d.

Carved ivory, 3 5/16 x 2 1/4 x 2 3/8 in.

Bequest of Charles Parsons, 1905

WU 2785

Mildred Lane Kemper Art Museum

Artworks by Chinese, Chinese-American, Japanese, and Japanese-American Artists



Possibly by Fujiwara Tadao (Japanese)

Sword and Scabbard, 1864

Metal and lacquered wood, 43 5/8 x 3 1/8 x 3/4 in.

Bequest of Charles Parsons, 1905

WU 1454



Unknown (Japanese)

Sword and Sheath (Wakilashi), c. 1680

Metal, 20 1/4 x 2 1/2 x 2 in.

Bequest of Charles Parsons, 1905

WU 1453



Unknown (Japanese)

Sepuku Knife, c. 1850

Metal and lacquer, 13 1/4 x 1 1/2 x 3/4 in.

Bequest of Charles Parsons, 1905

WU 2683



Unknown (Japanese)

Sword, c. 1850

Metal and lacquer, 24 1/2 x 2 3/8 x 1 3/4 in.

Bequest of Charles Parsons, 1905

WU 2684



Unknown (Japanese)

Sword and Sheath, c. 1800

Metal, lacquered wood, 15 1/2 x 1 3/4 x 3/4 in.

Bequest of Charles Parsons, 1905

WU 2685

Mildred Lane Kemper Art Museum

Artworks by Chinese, Chinese-American,
Japanese, and Japanese-American Artists

Unknown maker / culture



Unknown

Tobacco Pipe, n.d.

Sterling silver, 10 1/8 x 5/8 in.

Bequest of Charles Parsons, 1905

WU 3261



Unknown

Vase, n.d.

Bronze, 7 9/16 x 4 1/16 in.

Bequest of Charles Parsons, 1905

WU 1065



Unknown

Vase, n.d.

Bronze, 7 9/16 x 4 1/16 in.

Bequest of Charles Parsons, 1905

WU 1066



Unknown

Jar, n.d.

Porcelain, 6 x 6 5/16 in.

Bequest of Charles Parsons, 1905

WU 230



Unknown

Jar, n.d.

Porcelain, 7 x 7 9/16 in.

Bequest of Charles Parsons, 1905

WU 231

Mildred Lane Kemper Art Museum

Artworks by Chinese, Chinese-American,
Japanese, and Japanese-American Artists



Unknown
Bowl, n.d.
Porcelain, 2 1/2 x 5 3/4 in.
Bequest of Charles Parsons, 1905 ??
WU 257



Unknown
Bowl, n.d.
Porcelain, 2 1/16 x 4 1/2 in.
Bequest of Charles Parsons, 1905 ??
WU 258



Unknown
Bowl, n.d.
Porcelain, 1 7/8 x 4 9/16 in.
Bequest of Charles Parsons, 1905
WU 263



Unknown
Vase, n.d.
Porcelain, 11 1/2 x 4 5/8 in.
Bequest of Charles Parsons, 1905
WU 255



Unknown
Vase, n.d.
Porcelain, 9 1/4 x 4 5/16 in.
Bequest of Charles Parsons, 1905 ??
WU 260

Mildred Lane Kemper Art Museum

Artworks by Chinese, Chinese-American,
Japanese, and Japanese-American Artists



Unknown
Beaker, n.d.
Porcelain, 13 1/4 x 8 3/4 in.
Bequest of Charles Parsons, 1905
WU 261



Unknown
Vase, n.d.
Porcelain, 8 1/4 x 5 1/16 in.
Bequest of Charles Parsons, 1905
WU 2630



Unknown
Vase, n.d.
Porcelain, 8 7/8 x 4 1/2 in.
Bequest of Charles Parsons, 1905
WU 310



Unknown
Teapot, n.d.
Ceramic with cloisonné enamel, 3 x 3 3/16 x 5 3/16 in.
Bequest of Charles Parsons, 1905
WU 34



Unknown
Vase (lamp base), n.d.
Porcelain, 28 1/8 x 14 5/8 in.
Bequest of Charles Parsons, 1905
WU 308

Mildred Lane Kemper Art Museum

Artworks by Chinese, Chinese-American, Japanese, and Japanese-American Artists



Daishin Gito (Japanese, 1656–1730)

A Calligraphic Hitomaru, n.d.

Hanging scroll; ink on paper, 67 x 29 cm

Bequest of David W. Mesker, 2016

156.2016



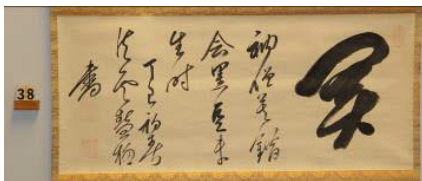
Deiryū (Japanese, 1895–1954)

Moon Enso (Zen Circle as Moon), n.d.

Hanging scroll; ink on paper, 64 x 22 cm

Bequest of David W. Mesker, 2016

160.2016



Egoku Domyō (Japanese, 1632–1721)

Calligraphy in Running Script, n.d.

Hanging scroll; ink on paper, 27 x 62 cm

Bequest of David W. Mesker, 2016

161.2016



Etsuzan Dōshū (Ch. Yueshan Daozong) (Japanese, 1629–1709)

1-Line Calligraphy, The Flowers Open for Ten Thousand Years in the Spring, n.d.

Hanging scroll; ink on paper, 136 x 30.5 cm

Bequest of David W. Mesker, 2016

148.2016

Mildred Lane Kemper Art Museum

Artworks by Chinese, Chinese-American, Japanese, and Japanese-American Artists



Fukuda Hankō (Japanese, 1804–1864)

Rainstorm in the Mountains, n.d.

Hanging scroll; ink and light colors on silk, 140 x 42 cm

Bequest of David W. Mesker, 2016

204.2016



Fukushima Keidō (Japanese, 1933–2011)

3-Character Calligraphy, The mountain becomes quieter
山更幽, n.d.

Hanging scroll; ink on paper, 109 x 34 cm

Bequest of David W. Mesker, 2016

139.2016



Fukushima Keidō (Japanese, 1933–2011)

Enso (Zen Circle) and Calligraphy: Throw it Away 放下若,
n.d.

Hanging scroll; ink on paper, 123 x 34 cm

Bequest of David W. Mesker, 2016

140.2016



Fukushima Keidō (Japanese, 1933–2011)

Calligraphy Fan, n.d.

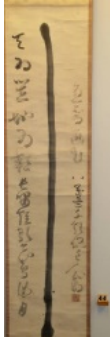
Folding fan with red lacquered supports, 26 x 44 cm

Bequest of David W. Mesker, 2016

145.2016

Mildred Lane Kemper Art Museum

Artworks by Chinese, Chinese-American, Japanese, and Japanese-American Artists



Gōchō Kankai (Japanese, 1749–1835)

Staff, n.d.

Hanging scroll; ink on paper, 128.5 x 29 cm

Bequest of David W. Mesker, 2016

167.2016



Gōhō (Japanese, c. 1751–1838)

Calligraphy in Running Script, 1838

Hanging scroll; ink on paper, 97.6 x 26 cm

Bequest of David W. Mesker, 2016

155.2016



Gyokurin (Japanese, 1751–1814)

Bamboo, 1805

Hanging scroll; ink on silk, 103 x 55 cm

Bequest of David W. Mesker, 2016

164.2016



**Hasegawa Nobuharu (Japanese, active late 16th-early
17th century)**

Quail and Camellia, n.d.

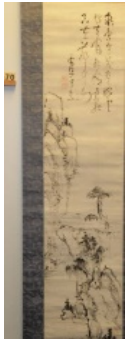
Hanging scroll; ink and light colors on paper, 44 x 29 cm

Bequest of David W. Mesker, 2016

170.2016

Mildred Lane Kemper Art Museum

Artworks by Chinese, Chinese-American,
Japanese, and Japanese-American Artists



Ike Taiga (Japanese, 1723–1776)

Landscape with Pavilion, n.d.

Hanging scroll; ink and light color on paper, 121.5 x 25.5
cm

Bequest of David W. Mesker, 2016

193.2016



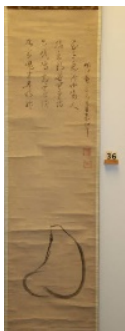
Ike Taiga (Japanese, 1723–1776)

Blooming Plum Tree, c. 1765

Hanging scroll; ink and light color on silk, 114 x 44 cm

Bequest of David W. Mesker, 2016

194.2016



Isshi Bunshū (Japanese, 1608–1646)

Daruma, n.d.

Hanging scroll; ink on paper, 99 x 26.5 cm

Bequest of David W. Mesker, 2016

159.2016



After Itō Jakuchū (Japanese, 1716–1800)

Grape Vine, n.d.

Hanging scroll; ink on paper, 119 x 53.5 cm

Bequest of David W. Mesker, 2016

186.2016

Mildred Lane Kemper Art Museum

Artworks by Chinese, Chinese-American,
Japanese, and Japanese-American Artists



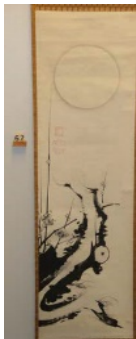
Itō Jakuchū or his studio (Japanese, 1716–1800)

Flowering Plum, n.d.

Hanging scroll; ink on paper, 102 x 27 cm

Bequest of David W. Mesker, 2016

184.2016



Itō Jakuchū (Japanese, 1716–1800)

Plum and Moon, n.d.

Hanging scroll; ink on paper, 107 x 30 cm

Bequest of David W. Mesker, 2016

185.2016



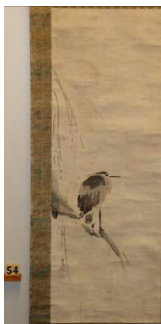
Kano Tan'yū (Japanese, 1601–1674)

Waterfall, n.d.

Hanging scroll; ink on silk, 130.5 x 23.5 cm

Bequest of David W. Mesker, 2016

180.2016



Kano Tsunenobu (Japanese, 1636–1713)

Heron on Willow Branch in Rain, n.d.

Hanging scroll; ink on paper, 77.5 x 27 cm

Bequest of David W. Mesker, 2016

177.2016

Mildred Lane Kemper Art Museum

Artworks by Chinese, Chinese-American,
Japanese, and Japanese-American Artists



Kimura Kenkadō (Japanese, 1736–1802)

Orchids, n.d.

Hanging scroll; ink on paper, 27 x 32.8 cm

Bequest of David W. Mesker, 2016

205.2016



Kinoshita Itsuun (Japanese, 1799–1866)

Towering Mountain Landscape, n.d.

Hanging scroll; ink on silk, 139 x 46 cm

Bequest of David W. Mesker, 2016

207.2016



Kitagawa Sōsetsu (Japanese, mid-17th century)

Flowers and Bamboo, n.d.

Hanging scroll; ink and colors on heavily sized (waxed?)
paper, 60 x 31.5 cm

Bequest of David W. Mesker, 2016

175.2016



Koga Kokudō (Japanese, 1777–1836)

Calligraphy in Running Script, n.d.

Hanging scroll; ink on paper, 101 x 30 cm

Bequest of David W. Mesker, 2016

153.2016

Mildred Lane Kemper Art Museum

Artworks by Chinese, Chinese-American,
Japanese, and Japanese-American Artists



Kōsen Shōton (Ch. Gaoquan Xindu) (Japanese, 1633–1695)

Single Stroke Daruma, n.d.

Hanging scroll; ink on paper, 102 x 31 cm

Bequest of David W. Mesker, 2016

157.2016



Kōsen Shōton (Ch. Gaoquan Xindu) (Japanese, 1633–1695)

One-line Calligraphy in Running Script, n.d.

Hanging scroll; ink on paper, 130 x 26.5 cm

Bequest of David W. Mesker, 2016

158.2016



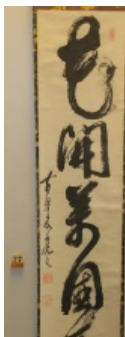
Kusumi Morikage (Japanese, c. 1620–1690)

Landscape, n.d.

Hanging scroll; ink and colors on silk, 86.5 x 38 cm

Bequest of David W. Mesker, 2016

147.2016



After Mokuan Shōtō (Ch. Muan Xingtao) (Japanese, 1611–1684)

Running Script Calligraphy, Flowers Open to Ten

Thousand Years of Springtime, n.d.

Hanging scroll; ink on paper, 124 x 27 cm

Bequest of David W. Mesker, 2016

150.2016

Mildred Lane Kemper Art Museum

Artworks by Chinese, Chinese-American,
Japanese, and Japanese-American Artists



Mokuan Shōtō (Ch. Muan Xingtao) (Japanese, 1611–1684)

Five-line Calligraphy, n.d.

Hanging scroll; ink on paper, 123.5 x 37 cm

Bequest of David W. Mesker, 2016

152.2016



After Maruyama Ōkyo (Japanese, 1733–1795)

Mandarin Ducks in Snow, n.d.

Hanging scroll; ink and colors on silk, 85 x 40.5 cm

Bequest of David W. Mesker, 2016

187.2016



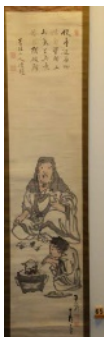
Murai Keiichi (Japanese, b. 1949)

Five-character Calligraphy, n.d.

Hanging scroll; ink on paper, 174 x 44.5 cm

Bequest of David W. Mesker, 2016

151.2016



After Nagasawa Rosetsu (Japanese, 1754–1799)

Brewing Tea, n.d.

Hanging scroll; ink and light color on paper, 122 x 27 cm

Bequest of David W. Mesker, 2016

188.2016

Mildred Lane Kemper Art Museum

Artworks by Chinese, Chinese-American,
Japanese, and Japanese-American Artists



Nakabayashi Chikkei (Japanese, 1816–1867)

Mi-style Landscape, n.d.

Hanging scroll; ink on silk, 133 x 42 cm

Bequest of David W. Mesker, 2016

202.2016



Nakabayashi Chikutō (Japanese, 1776–1853)

Snowy Bamboo and Full Moon, n.d.

Hanging scroll; ink on paper, 140 x 29 cm

Bequest of David W. Mesker, 2016

201.2016



Nakahara Nantenbō (Japanese, 1839–1925)

Staff, n.d.

Hanging scroll; ink on paper, 137 x 32.5 cm

Bequest of David W. Mesker, 2016

162.2016



Nakajima Raishō 中島来章 (Japanese, 1796–1871)

Cicada on a Branch, n.d.

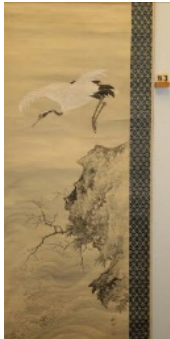
Hanging scroll; ink and light colors on silk, 20 x 21 cm

Bequest of David W. Mesker, 2016

189.2016

Mildred Lane Kemper Art Museum

Artworks by Chinese, Chinese-American,
Japanese, and Japanese-American Artists



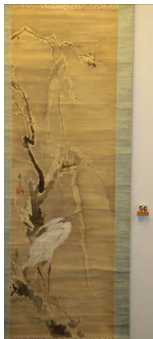
Okamoto Shūki (Japanese, 1767–1862)

Crane, Waves, and Rock, n.d.

Hanging scroll; ink and colors on silk, 106.5 x 37 cm

Bequest of David W. Mesker, 2016

206.2016



Onishi Keisai (Japanese, active early 19th century)

Heron on Willow Branch in Winter, n.d.

Hanging scroll; ink and light colors on silk, 123 x 38.5 cm

Bequest of David W. Mesker, 2016

179.2016



Ōtagaki Rengetsu (Japanese, 1791–1875)

Calligraphy: Poem Card (tanzaku), n.d.

Hanging scroll; ink on decorated paper, 36 x 6 cm

Bequest of David W. Mesker, 2016

182.2016



Ōtagaki Rengetsu (Japanese, 1791–1875)

Attributed to Tomioka Tessai (Japanese, 1836–1924)

Poem with Landscape of Awaji Island, n.d.

Hanging scroll; ink on paper, 100 x 28.5 cm

Bequest of David W. Mesker, 2016

183.2016

Mildred Lane Kemper Art Museum

Artworks by Chinese, Chinese-American, Japanese, and Japanese-American Artists



Ranzan Shōryū (Japanese, 1713–1792)

Calligraphy—The Forking Stream, n.d.

Hanging scroll; ink on paper, 29 x 51.5 cm

Bequest of David W. Mesker, 2016

154.2016



After Sakai Hōitsu (Japanese, 1761–1828)

Autumn Grasses and Flowers, n.d.

Hanging scroll; ink and colors on silk, 96 x 35.5 cm

Bequest of David W. Mesker, 2016

172.2016



Sakai Hōitsu (Japanese, 1761–1828)

Plovers and Breaking Waves, n.d.

Hanging scroll; ink and colors on silk, 121 x 51 cm

Bequest of David W. Mesker, 2016

171.2016



Sakai Hōitsu (Japanese, 1761–1828)

Noblemen and Court Lady in Flower Cart, n.d.

Hanging scroll; ink and colors on silk, 31.5 x 44 cm

Bequest of David W. Mesker, 2016

173.2016

Mildred Lane Kemper Art Museum

Artworks by Chinese, Chinese-American,
Japanese, and Japanese-American Artists



Sakai Hōitsu (Japanese, 1761–1828)

Wisteria, n.d.

Hanging scroll; ink and colors on silk, 129 x 48 cm

Bequest of David W. Mesker, 2016

174.2016



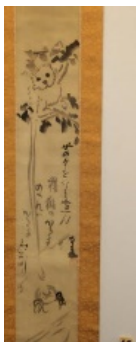
Sengai Gibon (Japanese, 1750–1837)

Mt. Fuji, n.d.

Horizontal hanging scroll; ink on paper, 26 x 38 cm

Bequest of David W. Mesker, 2016

163.2016



Sengai Gibon (Japanese, 1750–1837)

Monkey, Crab, and Moon, n.d.

Hanging scroll; ink on silk, 97 x 15.5 cm

Bequest of David W. Mesker, 2016

168.2016



Shibata Zeshin (Japanese, 1807–1891)

Firefly on Fan, n.d.

Hanging scroll; ink, colors, and lacquer on paper, 49.5 x 25.5 cm

Bequest of David W. Mesker, 2016

190.2016

Mildred Lane Kemper Art Museum

Artworks by Chinese, Chinese-American, Japanese, and Japanese-American Artists



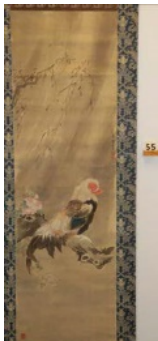
Shibata Zeshin (Japanese, 1807–1891)

Imagery of Spring and Autumn, n.d.

Pair of hanging scrolls; ink, colors, and lacquer on paper,
28 x 18 cm each

Bequest of David W. Mesker, 2016

191.2016 a-b



Sō Shiseki (Japanese, 1715–1786)

Rooster Grooming Itself on Branch in Rainstorm, n.d.

Hanging scroll; ink and colors on silk, 100 x 31 cm

Bequest of David W. Mesker, 2016

178.2016



Taikan Monju (Japanese, 1775–1842)

Jittoku's Broom, n.d.

Hanging scroll; ink on paper, 96 x 27.5 cm

Bequest of David W. Mesker, 2016

165.2016



Tani Bunchō (Japanese, 1763–1840)

Geese and Reeds, n.d.

Hanging scroll; ink and white pigment on paper, 23.5 x 40
cm

Bequest of David W. Mesker, 2016

199.2016

Mildred Lane Kemper Art Museum

Artworks by Chinese, Chinese-American, Japanese, and Japanese-American Artists



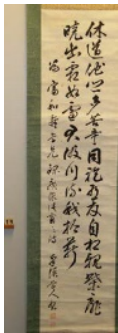
Tani Bunchō (Japanese, 1763–1840)

Mountain Fishing Village in Rain, n.d.

Hanging scroll; ink on silk, 35.5 x 53 cm

Bequest of David W. Mesker, 2016

200.2016



Taniguchi Yoshihiko (Japanese, 1891–1956)

Calligraphy in Chinese, c. 1940–50

Hanging scroll; ink on paper, 132 x 31 cm

Bequest of David W. Mesker, 2016

141.2016



Tokuyama Gyokuran (Japanese, 1727–1784)

Kien

Bamboo, n.d.

Pair of hanging scrolls; ink on paper, 139 x 27.5 cm

Bequest of David W. Mesker, 2016

192.2016 a-b



Attributed to Tosa Mitsuoki (Japanese, 1617–1691)

Asukai Masaaki (Japanese, 1611–1679)

One of the One Hundred Poets, the Poetess Koshikibu

Naiji with Landscape and Biography of Poetess, n.d.

Hanging scroll; ink and colors on silk and ink with gold-flecked paper, 32 x 48.5 cm

Bequest of David W. Mesker, 2016

176.2016

Mildred Lane Kemper Art Museum

Artworks by Chinese, Chinese-American,
Japanese, and Japanese-American Artists



Ukita Ikkei (Japanese, 1795–1859)

One of the Thirty-six Poets, n.d.

Hanging scroll; ink and colors on silk, 47.5 x 20 cm

Bequest of David W. Mesker, 2016

169.2016



Uragami Shunkin (Japanese, 1779–1846)

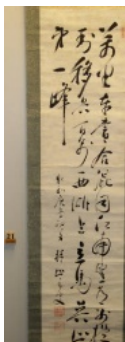
Shinozaki Shochiku (Japanese, 1781–1851)

Still Life with Fish, 1839–43

Hanging scroll; ink and light colors on silk, 40 x 76 cm

Bequest of David W. Mesker, 2016

203.2016



Uzan Gaishi (Japanese, early 20th century)

Calligraphy in Running Script, 1930

Hanging scroll; ink on paper, 137 x 32.5 cm

Bequest of David W. Mesker, 2016

143.2016



Yamamoto Baiitsu (Japanese, 1783–1856)

Blossoming Plum, n.d.

Hanging scroll; ink on silk, 156 x 84 cm

Bequest of David W. Mesker, 2016

195.2016

Mildred Lane Kemper Art Museum

Artworks by Chinese, Chinese-American,
Japanese, and Japanese-American Artists



Yamamoto Baiitsu (Japanese, 1783–1856)

Ducks and Spring Flowers, n.d.

Hanging scroll; ink and color on silk, 131 x 54.5 cm

Bequest of David W. Mesker, 2016

196.2016



Yamamoto Baiitsu (Japanese, 1783–1856)

Monk Striking a Gong, n.d.

Hanging scroll; ink and light color on paper, 88.5 x 19.5 cm

Bequest of David W. Mesker, 2016

197.2016



Yamamoto Baiitsu (Japanese, 1783–1856)

Blossoming Plum Branch, n.d.

Hanging scroll; ink on paper, 132 x 58.5 cm

Bequest of David W. Mesker, 2016

198.2016



Yamamoto Genpō (Japanese, 1866–1961)

One-line Calligraphy, n.d.

Hanging scroll; ink on paper, 134 x 29 cm

Bequest of David W. Mesker, 2016

149.2016

Mildred Lane Kemper Art Museum

Artworks by Chinese, Chinese-American,
Japanese, and Japanese-American Artists



Yasui Oemaru (Japanese, 1722–1805)
Ouchiyama (Chinese gate in the grounds of the Kyoto Imperial Palace), with haiku poem, 1804
Hanging scroll; ink on paper, 102.5 x 26.5 cm
Bequest of David W. Mesker, 2016
166.2016



Unknown (Japanese)
Mountain Landscape, probably 18th or 19th century
Hanging scroll; ink and light color on paper, 61.5 x 21 cm
Bequest of David W. Mesker, 2016
181.2016



Unknown (Japanese)
Arrow, n.d.
Hanging scroll; ink on paper, 122.5 x 129.5 cm
Bequest of David W. Mesker, 2016
142.2016

Mildred Lane Kemper Art Museum

Artworks by Chinese, Chinese-American, Japanese, and Japanese-American Artists



Fukami Sueharu (Japanese, b. 1947)

Serenity Blade, n.d.

Porcelain with seihakuji glaze, set into a square wooden base, 77.5 cm

Bequest of David W. Mesker, 2016

137.2016



Hamada Shōji (Japanese, 1894–1978)

Large Bowl with Design of the Character for the Number Ten in White Glaze, n.d.

Glazed stoneware, 15 x 50 cm

Bequest of David W. Mesker, 2016

135.2016



Inaba Yoneki (Japanese, b. 1941)

Tokoname ware Jar, n.d.

Tokoname stoneware with natural ash glaze, 20 x 19 cm

Bequest of David W. Mesker, 2016

132.2016



Itō Motohiko (Japanese, b. 1939)

Hexagonal Box with Fireflies Design and Leaf Design in Interior, n.d.

Stoneware with overglaze enamels and cloth texture ground, 5.5 x 19 cm

Bequest of David W. Mesker, 2016

127.2016

Mildred Lane Kemper Art Museum

Artworks by Chinese, Chinese-American, Japanese, and Japanese-American Artists



Richard Milgrim (American, b. 1955)
Red Shino Persimmon-shaped Mizusashi, 1988
Glazed stoneware, 18 x 19 cm
Bequest of David W. Mesker, 2016
125.2016



Miyakawa Kiyoshi (Japanese, b. 1943)
Flower Vase, n.d.
Porcelain with seihakuji (bluish-white) glaze, 22 x 28 x 12 cm
Bequest of David W. Mesker, 2016
129.2016



Morino Hiroaki (Taimei) (Japanese, b. 1934)
Vase, n.d.
Stoneware with black design, 26.5 x 24 x 13 cm
Bequest of David W. Mesker, 2016
134.2016



Nakazato Takashi (Japanese, b. 1937)
Karatsu Ware Nanban-style Tube-shaped Flower Vase, n.d.
Karatsu stoneware with natural ash glaze, 21 x 11 cm
Bequest of David W. Mesker, 2016
131.2016

Mildred Lane Kemper Art Museum

Artworks by Chinese, Chinese-American, Japanese, and Japanese-American Artists



Tsuji Seimei (Japanese, b. 1927)

Large Square Vase, 1982

Shigaraki stoneware, 9.5 x 14.5 x 14.5 cm

Bequest of David W. Mesker, 2016

128.2016



Tsuneoka Mitsuoki (Japanese, b. 1939)

Large Bowl with Flambé Cinnabar Glaze, n.d.

Stoneware with purple, red, blue glazes, 18.5 x 55 cm

Bequest of David W. Mesker, 2016

136.2016



Tsuji Kyo (Japanese, 1930–2008)

Set of Four Nested Hexagonal Dishes with Circular Designs, n.d.

Glazed Shigarki stoneware, 3.5 x 27 cm

Bequest of David W. Mesker, 2016

133.2016



Unknown (Bizen ware potter) (Japanese, mid-to-late 20th century)

Square Tray with Circles, n.d.

Glazed stoneware with cloth texture ground, 7 x 28 x 29 cm

Bequest of David W. Mesker, 2016

123.2016