



From the Director

Dear Friends,

This year marks the fifth anniversary of the [Brown School Evaluation Center](#). We launched on May 20, 2015 with a mission to advance evaluation science and practice to help organizations create lasting social impact. We were filled with excitement that its doors were open and our small but very capable team was ready.

Five years later, we are able to celebrate this milestone because of our community partners. [We are proud to share our five-year snapshot](#). We are forever grateful for the trust that over 55 organizations have given us to help them expand their [evaluation](#) and [strategic learning capacity](#). Being able to collaborate with our partners – as well as witness their life-changing work to support clients, families and communities – is inspiring and humbling.

There are so many people to thank. We are deeply grateful for the guidance of Eddie Lawlor, Doug Luke, Sarah Bobmeyer, Patrick Fowler, Amanda Moore McBride, Lora Iannotti, Janet Gillow, Amy Eyler, Peter Hovmand, and so many others, who helped set the foundation of the Evaluation Center.

Our growth over the years is the direct result of [our talented team](#): Nikole Lobb Dougherty, Lexie Walsh, Heather Jacobsen, Meihsi Chiang, Smriti Bajracharya, Courtney King, Myisha Wilcher-Roberts, Missy Krauss, Ife Albert, Emily Laurent, Courtney Cantwell, Elsa Snider, Jacob Nason as well as the many contributions of our affiliate faculty and staff and [former team members](#).

We are grateful for the support of Dean Mary McKay, Associate Dean Gary Parker and everyone at the Brown School. It is thanks to your continued investment in our success that we are able to bring evaluation services and capacity-building support to our partners.

We could have never predicted that today we would be in the midst of a public health pandemic. Our commitment remains and we recognize that quality evaluation services are needed now more than ever. We remain excited and thankful for the work we continue to do with our amazing partners to strengthen communities and make a difference in people's lives.

Sincerely,

Nancy Mueller, MPH

Assistant Dean for Planning and Evaluation at the Brown School
Director of the Brown School Evaluation Center



Featured Project



**United Way of Greater St. Louis 2019
Community Needs Assessment**

Upcoming Events

June 22-26, 2020
Summer Institute:
[Effective Project Management Techniques for Social Service Settings](#)

October, November, December 2020
Applications now being accepted for the [Post-Master's Certificate in Data Visualization & Communication](#)

[United Way of Greater St. Louis](#) commissioned a comprehensive [Community Needs Assessment](#) to understand the St. Louis region's most pressing needs, focusing on its 16-county service area through five impact areas:

- provide food and shelter
- establish financial stability
- foster learning
- improve health
- strengthen communities

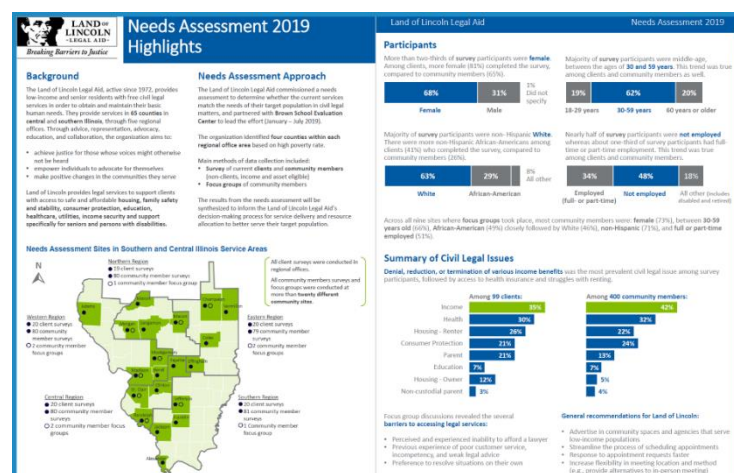
This Community Needs Assessment is part of the strategic approach of the United Way's [community investment model](#) – helping United Way assess the prevalent needs of the community and aligning funding decisions to meet those needs

The [Evaluation Center](#) partnered with the United Way and four other institutions to design and implement the 2019 Community Needs Assessment. The other partners included Mutare Network, University of Missouri St. Louis' Community Innovation and Action Center, Urban Strategies, Inc. (USI) with InvestSTL, Community Builders Network of Metro St. Louis, and WePower.

The Evaluation Center led the secondary quantitative data component, the triangulation of the qualitative and quantitative data sources, and the county prioritization of needs process.

In January 2020, United Way released the findings of the Community Needs Assessment. The Community Needs Assessment findings can be found on [United Way's website](#).

Evaluation in Action



[Land of Lincoln Legal Aid](#), a not-for-profit corporation that provides free civil legal services to low-income and senior residents in 65 counties in central and southern Illinois, partnered with the Evaluation Center to complete a [community needs assessment](#). [Land of Lincoln Legal Aid](#) used the results to inform their decision-making process for service delivery and organizational resource allocation – all to better serve their service population.



The Evaluation Center hosted a [data party](#) with [Big Brothers Big Sisters of Eastern Missouri](#) in February. Over 60 leaders and staff attended the data party to discuss key evaluation findings and form recommendations.

New Partnership

The Evaluation Center is excited to be partnering with the [Institute of Clinical and Translational Sciences \(ICTS\)](#) at Washington University in St. Louis to better understand the strengths and opportunities of their services. Over the next few months, we will conduct and analyze interviews with the Institute's key stakeholders.

ICTS connects research scientists across academic

Monthly Evaluation Workshops
The [Evaluation Association of St. Louis](#) offers monthly evaluation workshops, free for members, and \$20 for non-members

Staff Spotlight



Meet Ife Albert, Senior Evaluation Assistant

How did you become interested in evaluation as a career?

I was drawn to evaluation because of the opportunity for broad impact. Evaluation could allow me to work alongside committed people already addressing health-related issues to enhance their efforts. I was particularly interested in how data could be used to help organizations achieve their goals more effectively.

What do you do to stay organized?

I have a tiny notepad that I take with me everywhere. Every evening, I write down what I have to do the next day and prioritize them, and I check things off as I complete them. Asana's also great!

With the return of warmer weather, what you are most looking forward to?
It'll be nice to go outside voluntarily again. I'm particularly looking forward to taking leisurely walks.

Who did you first see live in concert, and where?

My first live experience was a Rihanna concert, and she was incredible!

centers and healthcare systems to improve translational research collaboration, education and training, and network development. Through these activities, ICTS seeks to improve health outcomes for patients and their communities.

The Evaluation Center first partnered with ICTS in 2015 to gather stakeholder input for their Clinical and Translational Science Award (CTSA) submission. The renewed partnership will serve a similar aim – qualitative interview data will inform the strategic direction of ICTS and support fund development activities.



In the News

[United Way Accepting Funding Requests](#)

The Telegraph, January 30, 2020

Evaluation Center

Brown School, Washington University in St. Louis

One Brookings Drive, St. Louis, MO 63130

evaluationcenter.wustl.edu

evaluation@wustl.edu

