



Evaluation Center
Brown School



Evaluation Edge | *Partnering for Impact*

June 2021

IT'S SUMMER TIME!

The Center had fun at Forest Park and the Zoo for celebration and goodbyes!



From the Associate Director

Dear Friends,

We love data here at the Evaluation Center! But our staff will tell you that it's not enough for organizations to just collect data. They also need to have a plan for who will use it and how. Guiding organizations through the process of data utilization is a key component of many of our evaluation partnerships. And we know our partners agree:

Data Helps to Inform Decision Making

“It is essential for the work we do at the [Center for Interprofessional Practice and Education](#) to utilize data to inform our strategic, curricular, and professional development decisions. We can confidently adjust our strategies or programming as the evidence provides guidance to where and how things need to be adjusted to meet our goals. **Data utilization allows us to continually monitor how the changes influence outcomes and make additional changes as needed.**” — Robin Young, Coordinator, CIPE

Data Visualization Helps to Tell the Story of Program Impact

“I don't know how you did it – summarize the data and narrow it down to key information – but it was amazing to see...we still use the [infographic brief](#) as our overview to the organization. It shows our mission, what we ended up doing, and the outcomes. **The evaluation team pulled out the data that reflects what we do and that data explains the clients we are touching and what is not even in our scope.**” — Atara Estes, Community Health Worker, Saint Louis Integrated Health Network

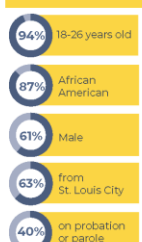
Coming Home For Good

How St. Louis-based RELINK is rebuilding the lives of justice-involved young adults through health, social services, and advocacy.

What is RELINK?

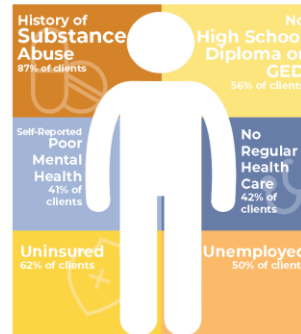
When justice-involved people leave jail, they often face a unique set of challenges that can limit their abilities to succeed and stay out of the criminal justice system. RELINK is a St. Louis Integrated Health Network (IHN) initiative that combines one-on-one support with referrals to committed community partners in health, mental health, housing, employment, and education. Through this collaborative support system, we hope to reduce health disparities, improve system coordination, and decrease the risk of 18 to 26 year-olds returning to jail. **This report details successes, challenges, and recommendations based on RELINK's first two years*.**

Who are our clients?



BARRIERS FOR RELINK CLIENTS

RELINK clients face numerous challenges. Without support these challenges increase the risk of returning to jail or even death.



RELINK Who's Who

Three key groups support RELINK clients' successes:
Community Health Workers (CHWs) - Assist clients before and after release
Integrated Health Network (IHN) - Manages the RELINK grant and employs CHWs
Health and Social Services Network (HSSN) - 20+ partners who provide essential services to RELINK clients

*Report timeframe: February 6, 2017 - September 30, 2018

ONLINE PROGRAM

POST-MASTER'S CERTIFICATE IN

PROGRAM EVALUATION

Evaluation Center
Brown School

5 SESSIONS
August 27, September 10 & 24,
October 8 & 22, 2021

Applications will be accepted
through August 15, 2021

Strategically thinking about data utilization and how to guide teams/organizations through this process is just one skill that is addressed in the [Post-Master's Certificate in Program Evaluation](#). We are accepting applications through August 13 for this online course, which meets on alternate Fridays from 8:30 a.m - 12:30 p.m. from August 27 through October 22.

“Data utilization is a lot like anything else – so much of the value is in the journey, in the process of defining what is useful, how it is useful, and why. I am so grateful to work with such skilled colleagues who guide our partners along that journey.” —Emily Kryzer, Evaluation Manager

This is a journey worth taking, and we enjoy being on this journey alongside our partners, again and again.

In partnership,

Nikole

Nikole Lobb Dougherty

Associate Director of the Brown School Evaluation Center



Featured Project

Upcoming Events

Celebrating the First Cohort of the Post-Master’s Certificate in Data Visualization and Communication

In Spring 2021, the [Evaluation Center](#) launched its first cohort of the [Post-Masters Certificate program in Data Visualization and Communication](#) led by staff members [Nikole Lobb Dougherty](#) and [Meihsi Chiang](#). Fourteen professionals with varied backgrounds, including clinical research, education, administration, and evaluation participated. This 10-week program took place virtually and included asynchronous and synchronous content including best practices and theory behind visualization, and ‘how-to’ videos of making effective data visuals and dissemination products such as dashboards, reports, and one-pagers. Participants attended in-depth discussions with the instructors and fellow classmates and practiced processes for data storytelling and data utilization.

The participants completed small projects throughout the course including: creating a data visualization style guide, quantitative and qualitative data visuals, practiced data storytelling, and drafted a dissemination plan. Most participants used their own datasets for these projects to create products that would be useful to their own agencies and stakeholders. We were excited to see amazing growth over the ten weeks in all the participants’ work!

2021 Cohort Participant Spotlight:



“I create lots of reports and data visualizations at work, but I have never been trained in how to create effective and appealing materials that actually work with how our brains process information. **After just a few weeks of this class, I was already able to create significantly improved charts and slide decks, and I know I will continue to draw on my learning!**”



“What I found most useful in this course was the specific step-by-step **"how to's"** of creating excellent charts in Excel. I fully understand the "best practices" in data viz after taking the course, and have a basic toolkit for developing graphs. Unlike other professional development courses I have participated in, with this course, I was able to apply new knowledge immediately!”

Evaluation in Action

Virtual Data Parties

A fun and interactive way to share evaluation findings with stakeholders!

[Tell Me More](#)

■ Data Parties are one of our favorite ways to share evaluation findings! They make dissemination fun and interactive, and can make interpreting dense data feel less like a chore, and more like a party! [Learn more about our tried-and-true tips and tricks for facilitating virtual data parties.](#)

■ [The SoulFisher Ministries \(TSM\)](#) helps previously incarcerated women reintegrate into the community. They

August 27- October 22, 2021

Applications now being accepted through August 13, 2021 for the [Post-Master’s Certificate in Program Evaluation](#)

The [Evaluation Association of St. Louis](#) offers monthly evaluation workshops/ events. Check out the virtual offerings and EASL’s Twitter [@evalstlouis](#). Register for these upcoming EASL events:

July 20, 2021
[Happy Hour *in person* at Schlafly Bottleworks](#)

Staff Spotlight



Meet [Myisha Wilcher-Roberts](#), Evaluation Manager

What is one resource that has helped you grow as an evaluator?

[Empowerment Evaluation: Knowledge and Tools for Self-Assessment, Evaluation Capacity Building and Accountability](#) by David M. Fetterman, Shakeh J. Kaftarian, and Abraham Wandersman.

One of its main points is that virtually every phase of the evaluation process has political implications which will affect the issues of focus, decisions made, how the outside world perceives the project, and whose interests are advanced and whose are ignored. It promotes the idea that evaluation should not be conducted simply to prove that a project worked, but also to improve the way it works. Effective evaluations also prepare organizations to use evaluation as an ongoing function of management and leadership.

How would your Evaluation Center colleagues describe you?

Hopefully that I value thoughtful engagement and everyone’s insights. Trust-building is such an important part of project management. Building relationships and establishing trust helps in understanding the capacity of a project and dealing

provide classes on budgeting, employment, coping skills, and building healthy relationships. The Evaluation Center facilitated a data party for TSM earlier this year to review the findings from their annual report. We assessed participants' change in knowledge and skills due to classes and the reach of their services. The TSM team had a challenging year trying to provide pre-release services during the early months of the COVID pandemic, but they shifted their focus to post-release services.



New Partnerships

The Evaluation Center is looking forward to working with our new partners:



■ The Center is partnering with a multidisciplinary team from the Washington University School of Medicine on the [Safe Return to Schools RADx-UP project](#) to address access to COVID-19 testing and understand the social, behavioral, and ethical factors driving testing and in-person school participation in six St. Louis County School Districts. The team closely collaborates with a Community Advisory Board to conduct listening sessions with parents/caregivers, teachers/staff, and students. The study results will aid participating researchers, school districts and communities in understanding how to mitigate concerns about in-person schooling and the reliability of the mitigation strategies (with or without screening testing) in preventing COVID-19 transmission.

■ The Center is collaborating with the Center for Violence and Injury Prevention at the Brown School on a multi-site process evaluation with the Gender Based Violence research team at UNICEF and its partner organizations in humanitarian settings. Operating in over 190 countries, UNICEF utilizes a survivor-centered [Gender-Based Violence Information Management System \(GBVIMS+\)](#) case management tool to be used universally for their organizations working with victims of GBV.

■ Panzi Hospital, supported by [Panzi Foundation](#), is directed by 2018 Nobel Peace Prize winner Dr. Denis Mukwege and serves survivors of sexual violence in the eastern region of the Democratic Republic of the Congo. Panzi's holistic model focuses on four 'pillars' of care: medical, psychosocial, socioeconomic, and legal aid support. The Evaluation Center is partnering with the Center for Human Rights, Gender and Migration at the Institute for Public Health and Panzi key stakeholders to develop a comprehensive evaluation plan for the model. The evaluation plan will provide a roadmap to guide upcoming evaluation efforts, continuous quality improvement, and model replication.

■ The [Center for Human Services Leadership \(CHSL\)](#) is partnering with the Evaluation Center to create a comprehensive evaluation plan as CHSL launches at Delmar Divine this year.



In the News

[Researchers Learn About Barriers, Benefits to COVID Testing for Students With Special Needs](#)

Brown School, May 10, 2021

ASPPH Friday Letter, May 14, 2021

[School-based COVID-19 testing initiative focuses on vulnerable populations](#)

Brown School, June 23, 2021

with unforeseen problems.

What's your favorite type of cuisine (and some favorite dishes)?

I love Thai food. Pad Ka Prao with Shrimp or Tofu, sunny side egg added – my favorite.

What music are you listening to right now (and how)?

Listening to Stay Free by Londrelle is on repeat. I listen through my wireless Beats, of course.

Evaluation Center

Brown School, Washington University in St. Louis



Washington University in St. Louis
BROWN SCHOOL

One Brookings Drive, St. Louis, MO 63130

evaluationcenter.wustl.edu

evaluation@wustl.edu