



# Maximizing Impact Through Evaluation

Accomplishments & Impact Report  
May 2015–January 2022



## From the Director

Partners and Colleagues,

I am thrilled to share the Brown School Evaluation Center’s first ever [Accomplishments & Impact Report](#). This report highlights some of the Center’s amazing partnerships and accomplishments since its inception in 2015.

We are grateful to have worked with almost 70 organizations to strengthen and enhance their evaluation culture and practice in the last six or so years. Those partnerships have translated into over 100 evaluation planning, implementation, and capacity-building projects. The Center has had a ripple effect within our community and nationally. We continue to have an unwavering commitment to supporting non-profit, social service, and academic partners as they work to strengthen their organizations and services, better demonstrate their effectiveness and, ultimately, meet the needs of the individuals and communities they serve.



**Nikole Lobb Dougerty**  
Director

Please take a few minutes to read more about the Center’s key accomplishments and impact as well as our vision for creating lasting social impact in the future (Looking to the Future section of the report). Because our Center is anchored in a world-class school of social work, public health, and social policy, it is uniquely positioned to leverage the expertise of our faculty and students to help advance our evaluation work. Together, we can create lasting social change.

In partnership,  
Nikole

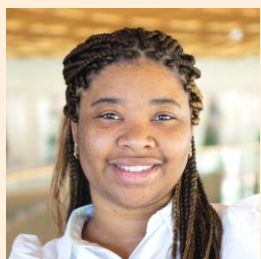
[Read our impact report](#)

## Staff Spotlight

This month, we want to shine a spotlight on our graduate assistants and our team members who have recently finished graduate school! We asked them to share what they’ve learned at the Evaluation Center and reflect on their time with us, and you can see their responses [here](#). We are grateful to work with talented students and appreciate everything they do for our projects and partners.

### May 2022 Graduates

A special congratulations to our team members who graduated this spring. We're excited to share that Raven and Alleia are now full-time staff members of the Evaluation Center team and we wish Zoey well as she begins a new position with Affinia Healthcare this summer.



Raven Brown  
MSW/MPH



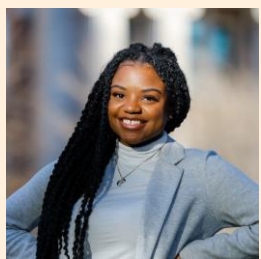
Zoey Dlott  
MSW/MPH



Alleia Pluymers  
MBA/MPH

### Current Graduate Students

As our current graduate assistants finish the school year, we appreciate their continued work with the Evaluation Center. A special thank you to Michael who completed his social work practicum with us this spring and will spend his summer working for Sherwood Forest.



Manyi-Eyng Ayuk



Nina Lukow



Leah Nason



Michael Paster



# In the News

[2022 State of the University Address](#)

Washington University in St. Louis, March 22, 2022

[The Delmar Divine comes together](#)

Saint Louis Magazine, February 1, 2022

[Impact of Responsible Fatherhood Programs on Parenting Outcomes – Video Abstract](#)

Family Process, January 29, 2022

[Medicaid enrollment in Missouri begins: applications appear vigorous](#)

The Source, January 26, 2022

## Evaluation Center

Brown School, Washington University in St. Louis

One Brookings Drive, St. Louis, MO 63130

[evaluationcenter.wustl.edu](http://evaluationcenter.wustl.edu)

[evaluation@wustl.edu](mailto:evaluation@wustl.edu)



Washington University in St. Louis

BROWN SCHOOL