



Center for Social
Development

BROWN SCHOOL AT WASHINGTON UNIVERSITY

Establishing a Community Land Trust in Webster Groves

Presented by: Lucy Chin, Nia Montoute, Taylor
Morton, Sarah Nash, and Jordan Whitters

Domestic SED Policy
December 3, 2020



Guiding Question

What principles and processes can be enacted to ensure that **Community Land Trust (CLT) leadership** appropriately reflects the **Webster Groves community**?



Our Approach

Understanding
Community Partner

Annotated
Bibliography

Recommendations
for Next Steps and
Resources for
Community



Annotated Bibliography

1

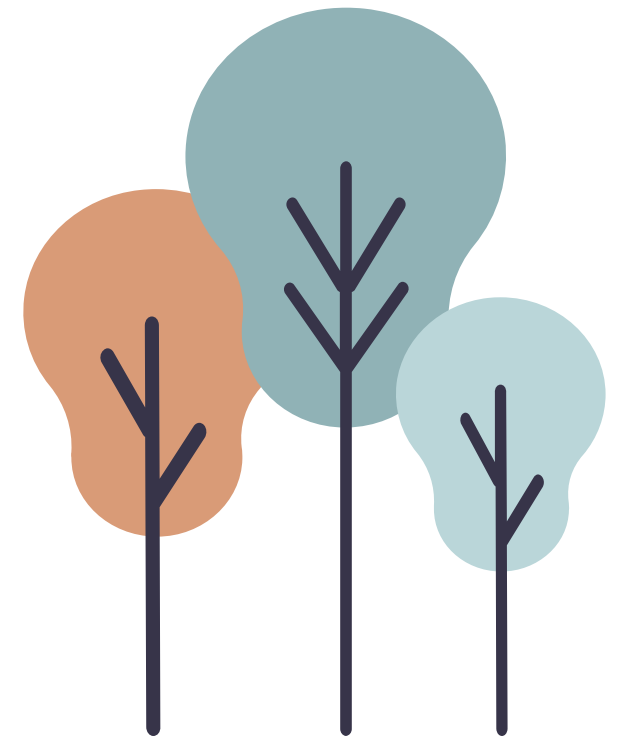
Leadership

2

Community Engagement

3

Cultivating Resources





Key Terms

Collective Impact

"The commitment of a group of important actors from different sectors to a common agenda for solving a Specific social problem" (Kania & Kramer, 2011).

Backbone Organization

"An entity that functions independently as a centralized management team...to coordinate the work of partners" (Klempin, 2016)

Cross-Sector Collaboration

"The linking or sharing of information, resources, activities, and capabilities by organizations in two or more sectors to achieve jointly an outcome that could not be achieved by organizations in one sector separately" (Bryson, Crosby, & Stone, 2006).

Leadership

Traditional non-profit model:

- Top-Down
- Lacking transparency and accountability
- Non-democratic

Innovate Leadership Tools:

Backbone organization

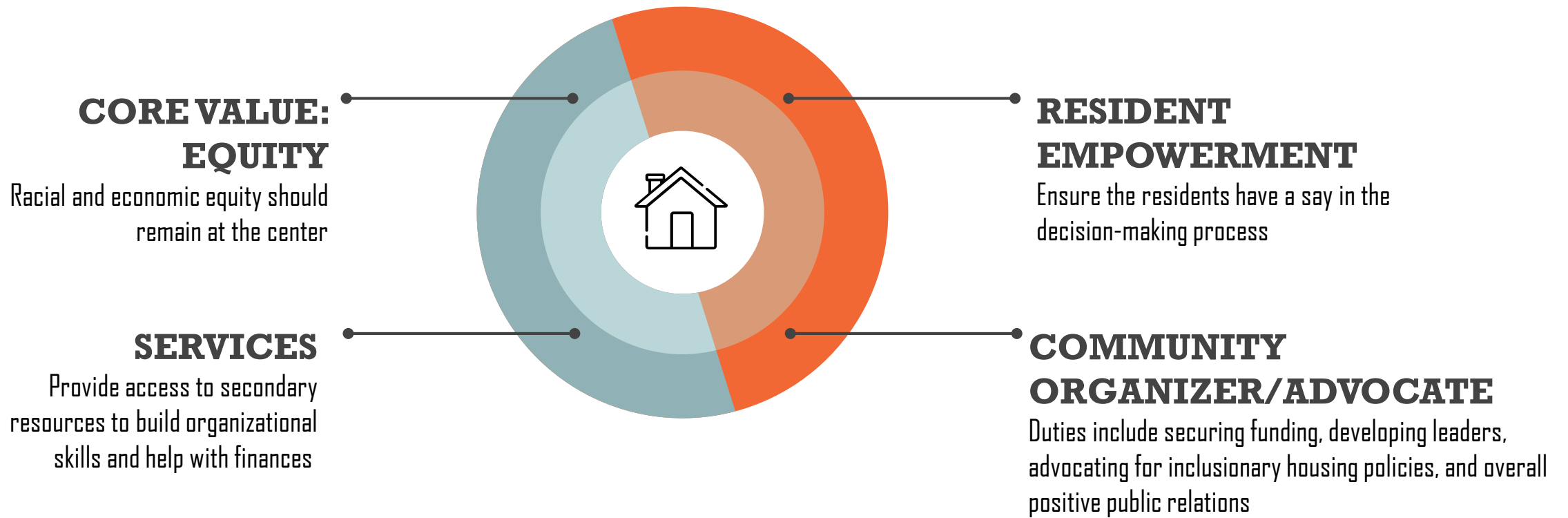
In-house leadership development & training

Quotas for community representation

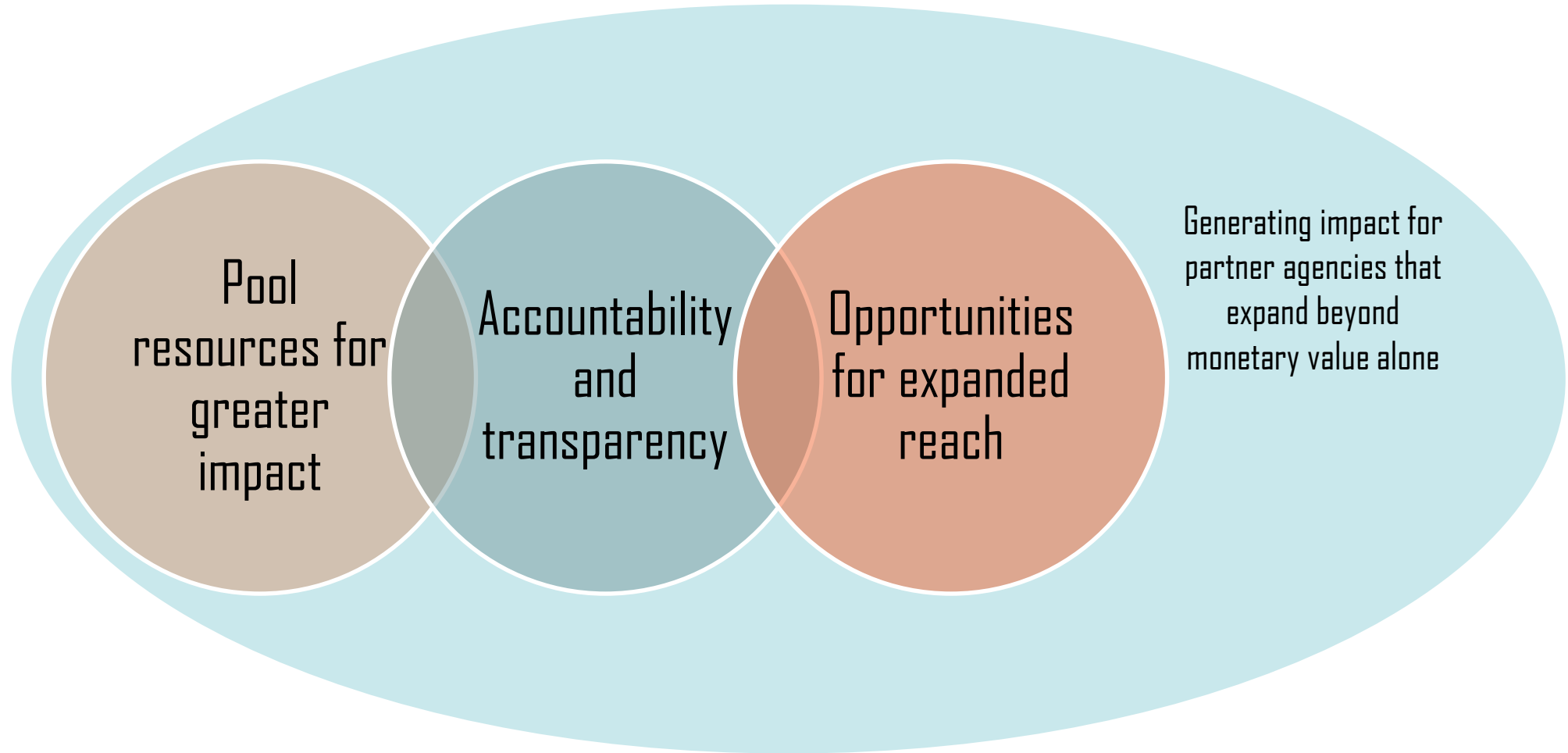
Community-Engaged Governance



Community Engagement



Cultivating Resources among Partner Organizations



Our Recommendations

1

Become a 501(c)(3)

2

Adopt a collective impact approach and function as the backbone organization

3

Build cross-sector collaborations & hire community members



Deliverables



Annotated Bibliography of articles related to community leadership, collective impact, innovative organizational governance structures, and cross-sector collaborations



Google Drive folder with access to full articles



PowerPoint slides with notes and recommendations



One-page **external facing document** that can be shared with community members

Questions?

**Immense gratitude
and appreciation to:** Councilwomen Laura Arnold
and Karen Alexander, Dr. Molly Metzger, and (Future Dr.!)
Megan Green for their support and encouragement *a//*
semester!

CREDITS: This presentation template was created by
[Slidesgo](#), including icons by [Flaticon](#), and infographics &
images by [Freepik](#).

Please keep this slide for attribution.



Center for Social
Development

BROWN SCHOOL AT WASHINGTON UNIVERSITY