

# It's a Process, Not a Product: Building Equitable Data Infrastructure

 **Data Science for Social Impact**  
An initiative of the Social Policy Institute at Washington University in St. Louis

*Data Science for Social Impact is a collaboration of:*

 **Washington**  
University in St. Louis  
SOCIAL POLICY INSTITUTE

 **Center for  
Inclusive Growth**

  
ST. LOUIS  
Regional Data Alliance

**data.org**



# Data Science for Social Impact Initiative

OBJECTIVE: Develop a set of trainings and resources for St. Louis social sector organizations seeking to utilize data more effectively to increase impact and promote equitable outcomes.





# DSSI Advisory Committee



**Shanna Crumley**  
Mastercard Center for  
Inclusive Growth



**Ted Enamorado**  
Washington University  
in St. Louis



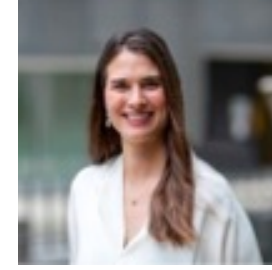
**Patrick Fowler**  
Washington University  
in St. Louis



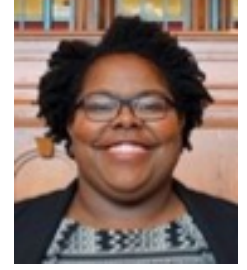
**Karishma Furtado**  
Forward Through  
Ferguson



**Rayid Ghani**  
Carnegie Mellon  
University



**Ana Hernández Kent**  
St. Louis Federal  
Reserve



**Jillian Martin**  
Fulbright U.S. Scholar  
Ghana



**Amen Ra Mashariki**  
AI Cities/ NVIDIA



**Alvitta Ottley**  
Washington University  
in St. Louis



**Trina Ragain**  
Operation Food  
Search



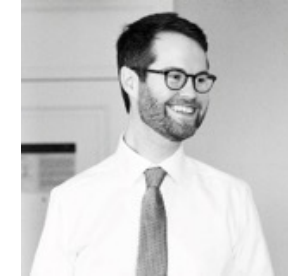
**Allie Chang Ray**  
Mutare Network



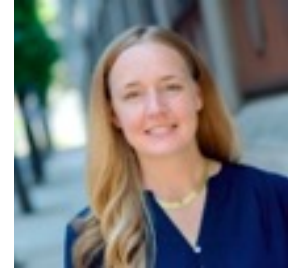
**Natalie Self**  
Cortex Innovation  
Community



**Esther Shin**  
Urban Strategies, Inc.



**Paul Sorenson**  
St. Louis Regional Data  
Alliance



**Ginger Zielinskie**  
data.org



# Values and Vision

- Developed in collaboration with the DSSI Advisory Committee
- Guides the design of all DSSI learning events and materials.





The DSSI initiative aims to build capacity and connection around equitable data practices.

Please let us know how we can work toward this goal in our offerings with a *brief* post-event survey.

We value your feedback and would love to hear from you!





# Who's in the room?

## Which best describes your role in relation to data?

**50%** Data informs my work but is not my primary focus

**47%** Working with data is my primary focus

**3%** I have little or no interaction with data

## Working in/with nonprofit or government?

**81%** Yes

**18%** No

## Geography

**46%** St. Louis region

**54%** Beyond St. Louis region

*Welcome*



# Upcoming Events

## Setting a Bigger Table: Participatory Approaches to Evaluating Impact

Thursday, September 8, 1-3 pm



Nikole Lobb Dougherty  
Brown School Evaluation Center  
Washington University in St. Louis

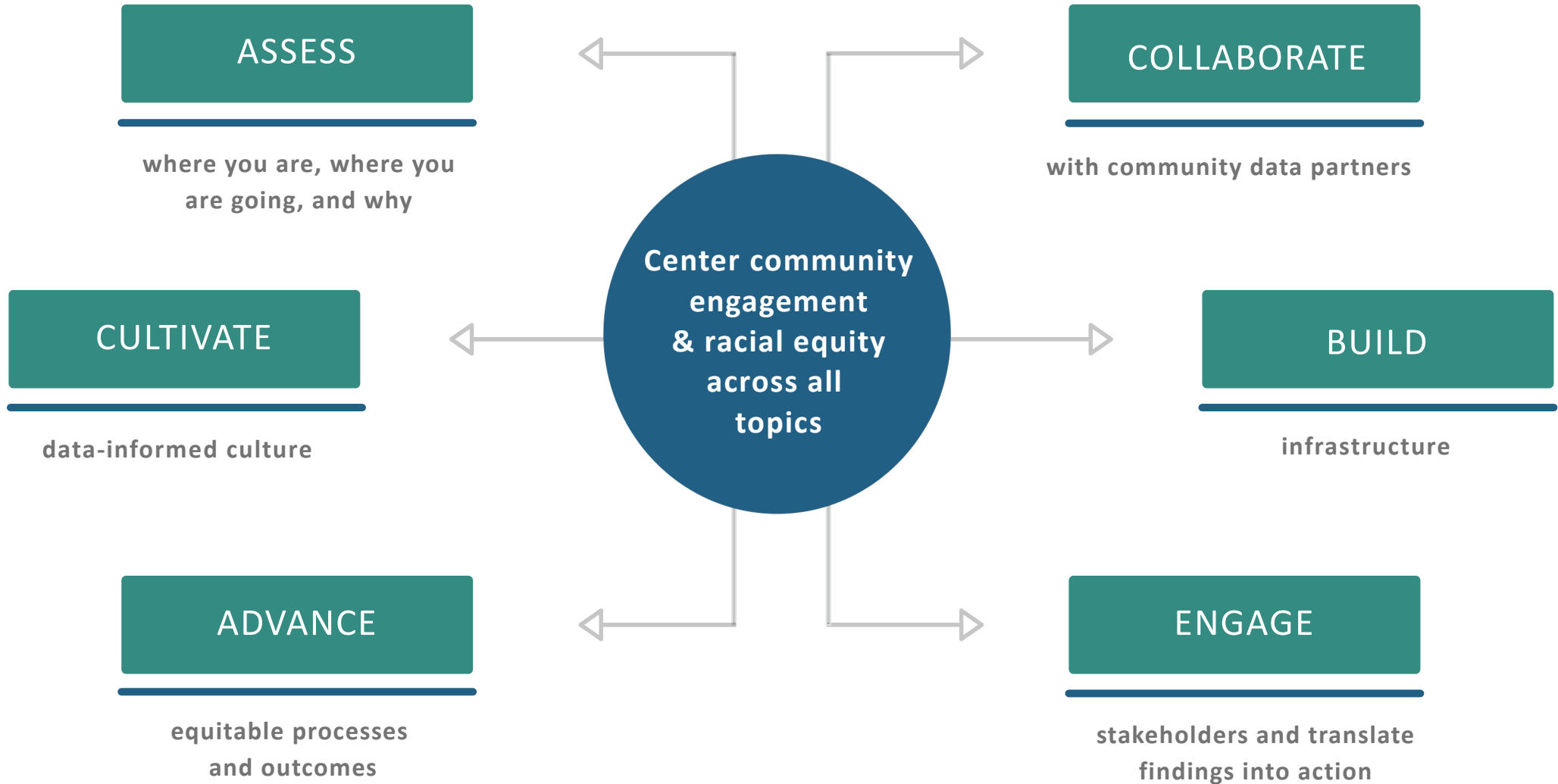


Amelia Parnell  
National Association of Student  
Personnel Administrators





# DSSI Focus Areas



## It's a Process, Not a Product: Building Equitable Data Infrastructure

- Equitable Data Infrastructure and Why It Matters
- San Diego Community Information Exchange
- St. Louis Community Information Exchange
- Community Voice in the CIE and St. Louis Regional Health Commission
- Q&A/ Continue the Conversation



Paul Sorenson  
St. Louis Regional  
Data Alliance



Karis Grounds  
Community Information  
Exchange San Diego



Regina Greer  
United Way of  
Greater St. Louis



Riisa Rawlins-Easley  
St. Louis Regional  
Health Commission

# Building Equitable Data Infrastructure















# Systems and Sectors Encountered

- Employment and Workforce Protections
- Insurance and Benefits Access
- Eviction Protection and Prevention
- Emergency Medical Response
- Hospital Social Work
- Social Service Call Center and Navigation
- Temporary Shelter Access
- Supportive Housing Services

# Big Questions

How do these many systems and sectors connect to each other?

If connected, how does [Debbie] benefit?  
How might she be harmed?

Where should [Debbie] have control of her service-seeking process and be able to push for system improvement?



# *Equitable Data Infrastructure*



The extent to which a system promotes equitable outcomes across populations — ideally using an anti-racist / liberatory model

Units of information able to be shared or processed for analysis and decision-making

Systems that undergird other systems — enabling (or hindering) data sharing and connectivity

# *Equitable Data Infrastructure*

## **Governance**

- Decision Making
- Data Protection
- Care Model Design
- Quality/Improvement
- Accountability

## **Technical**

- Data Collection
- Data Standards
- Software/Databases
- Data Sharing
- Interoperability

## **Community**

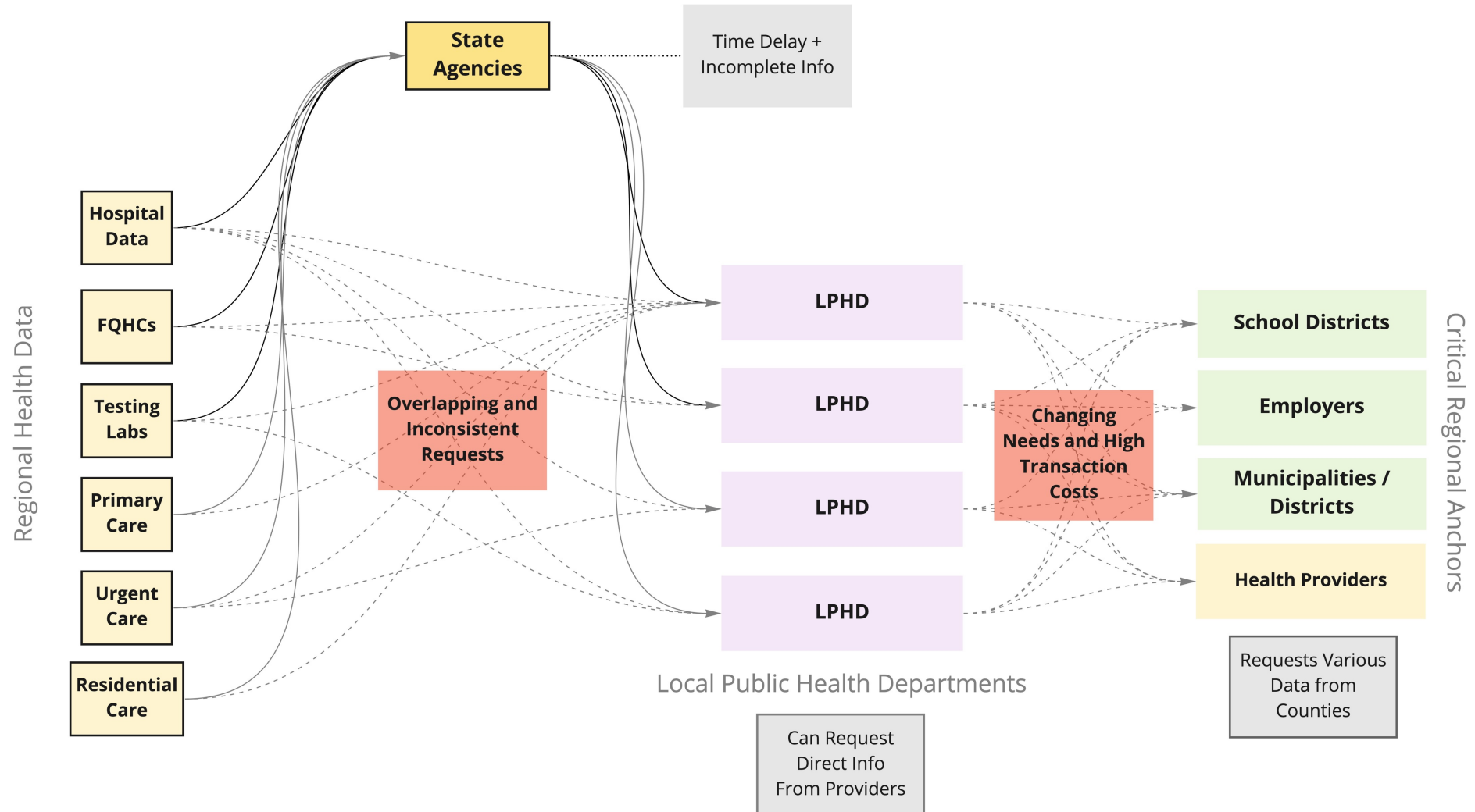
- Gov/Policy Landscape
- Funding Streams
- Reporting Reqs
- Coordinating Efforts
- Engagement / Voice



*How do these systems inform and reinforce each other?*

**... so what does  
it look like?**

# Covid Data Infrastructure?



# A Very Oversimplified Overview of Healthcare Data Infrastructure



Patient



Provider



Clinic



System



Cross-System



# A Very Oversimplified Overview of Social Service Data Infrastructure



Person



Family



Community



Program



Provider



Center



System?



Cross-System?

Client Database  
System

Common Reporting  
Requirements  
(& Systems)



# A Very Oversimplified Overview of Social Service Data Infrastructure

## Fragmentation Across Related Social Systems

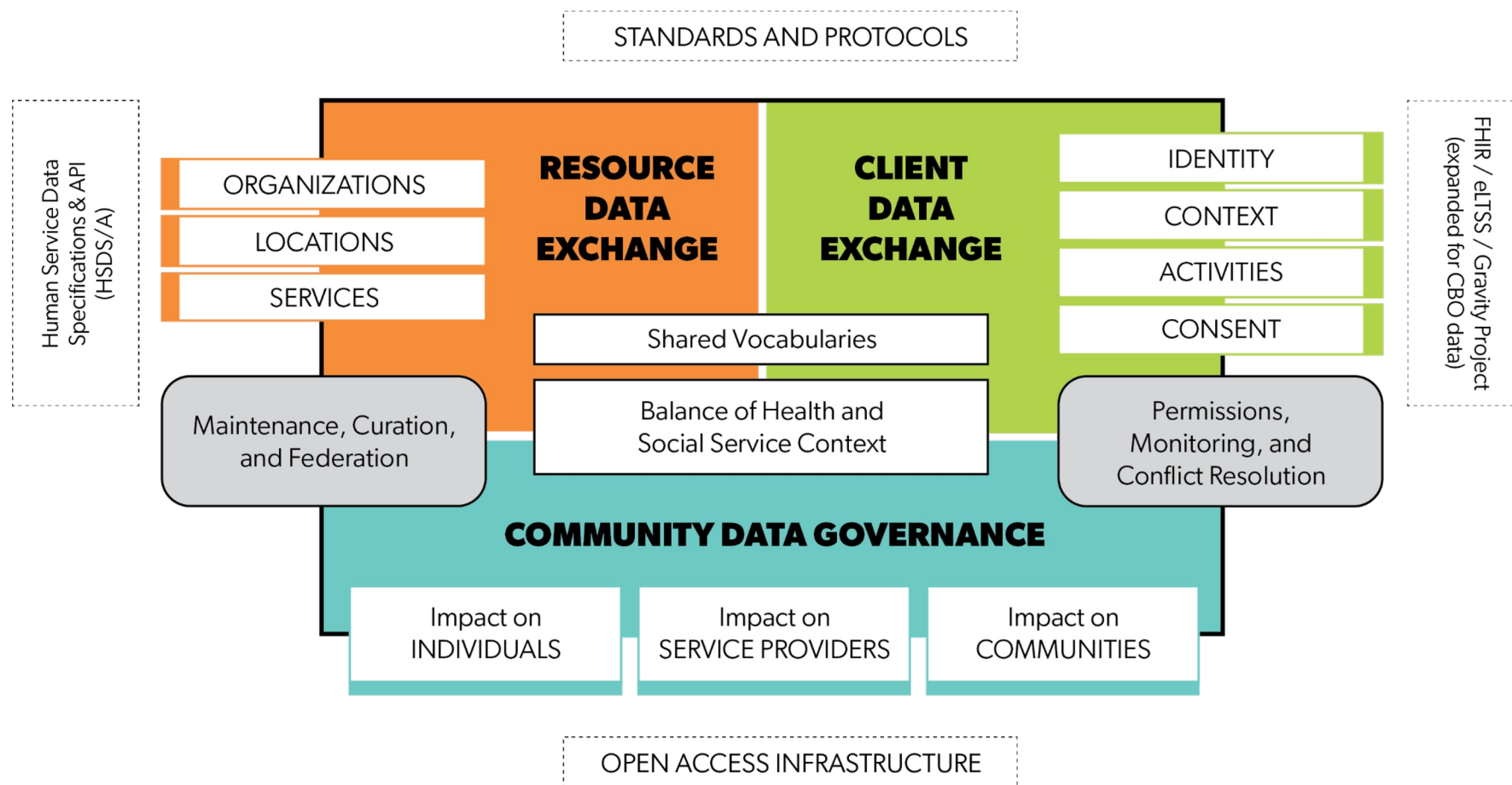
*(aging, disability, foster care, housing, behavioral health, employment, community development, etc. etc.)*



# Emerging Infrastructure: “Community Information Exchanges”

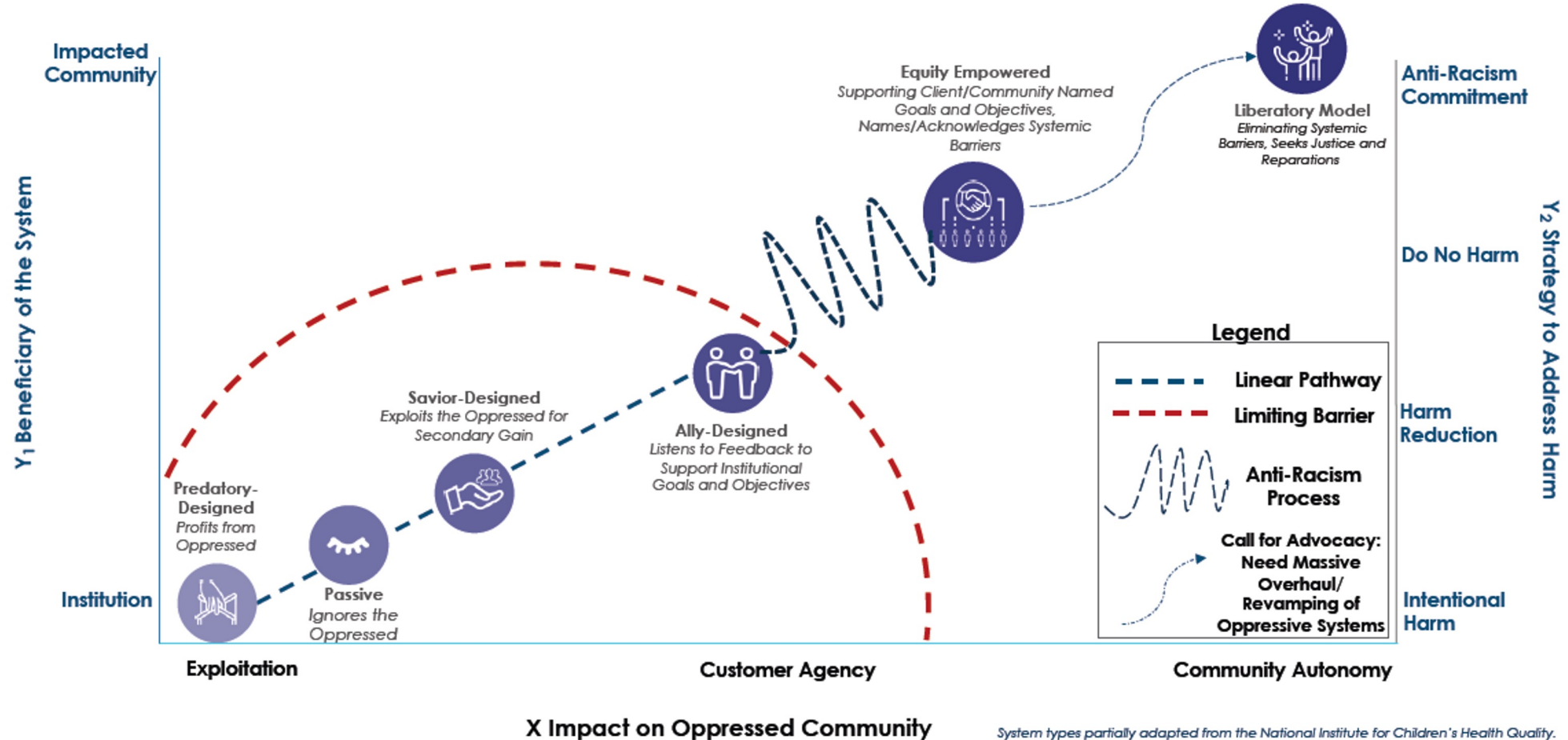
2-1-1 San Diego defines a CIE as “an ecosystem comprised of multidisciplinary network partners that use a shared language, a resource database, and an integrated technology platform to deliver enhanced community care planning.”

# Primary Components of “Community Information Exchanges”



[bit.ly/socialcaredatapdf](https://bit.ly/socialcaredatapdf)

# Landscape of System Design: Institutional Reflection



Source: [CIE San Diego Data Equity Framework](#)

# Systems and Sectors Encountered

- Employment and Workforce Protections
- Insurance and Benefits Access
- Eviction Protection and Prevention
- Emergency Medical Response
- Hospital Social Work
- Social Service Call Center and Navigation
- Temporary Shelter Access
- Supportive Housing Services

**How could equitable data infrastructure change Debbie's story?**



## It's a Process, Not a Product: Building Equitable Data Infrastructure

- Equitable Data Infrastructure and Why It Matters
- San Diego Community Information Exchange
- St. Louis Community Information Exchange
- Community Voice in the CIE and St. Louis Regional Health Commission
- Q&A/ Continue the Conversation



Paul Sorenson  
St. Louis Regional  
Data Alliance



Karis Grounds  
Community Information  
Exchange San Diego



Regina Greer  
United Way of  
Greater St. Louis



Riisa Rawlins-Easley  
St. Louis Regional  
Health Commission



The DSSI initiative aims to build capacity and connection around equitable data practices.

Please let us know how we can work toward this goal in our offerings with a *brief* post-event survey.

We value your feedback and would love to hear from you!





# Continue the Conversation

We will offer two breakout rooms for an opportunity to connect and share with social sector colleagues.

Feel free to come off mute/ camera and engage, or just sit back and listen!



Regina Greer  
United Way of  
Greater St. Louis



Karis Grounds  
Community Information  
Exchange San Diego



Riisa Rawlins-Easley  
St. Louis Regional  
Health Commission



Paul Sorenson  
St. Louis Regional  
Data Alliance



# Thank You!

## Things You Can Do:

**1. Take the conversation back to your organization.**

**2. Share your thoughts and ideas with us!**

- Fill out the *brief* post-event survey
- Get in touch by emailing [jenrose@wustl.edu](mailto:jenrose@wustl.edu)

**3. Join the St. Louis Regional Data Alliance:**

- Visit <https://stldata.org/> to learn more!

**4. Sign up for our next event:**

- [Setting a Bigger Table: Participatory Approaches to Evaluating Impact](#)